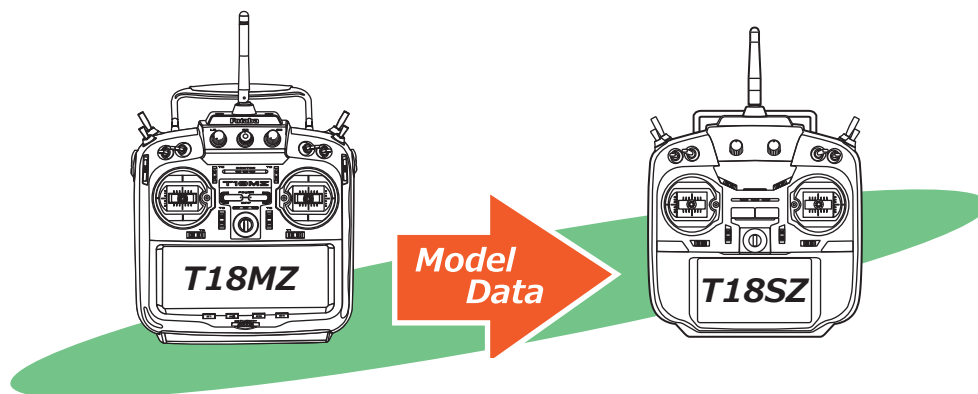


## T18SZ Model Data Converter (for T18MZ to T18SZ only)



The T18SZ Model Data Converter is software that converts model data for T18MZ to that for T18SZ. The software cannot convert model data made by other transmitters such as T14MZ etc. Thus please still use the existing converter - Futaba Model Data Converter Ver.1.0.4, if you want to convert model data for T14MZ/FX-40/T12Z/T12FG/FX-30.

Prior to using the Model Data Converter software, please ensure that your transmitter is utilizing the latest update for the respective transmitter. Also, be sure to select the desired conversion data in transmitter after it has been updated.

**Important: Always check the operation of the model prior to flight.**

- 1. Preparation .....P2
- 2. Select the Source of the Data .....P2
- 3. Select the Intended Location for the Converted Data.....P3
- 4. Detailed setting .....P4
- 5. Data conversion.....P6
- 6. Precautions and warnings .....P7
- 7. Error Message .....P8

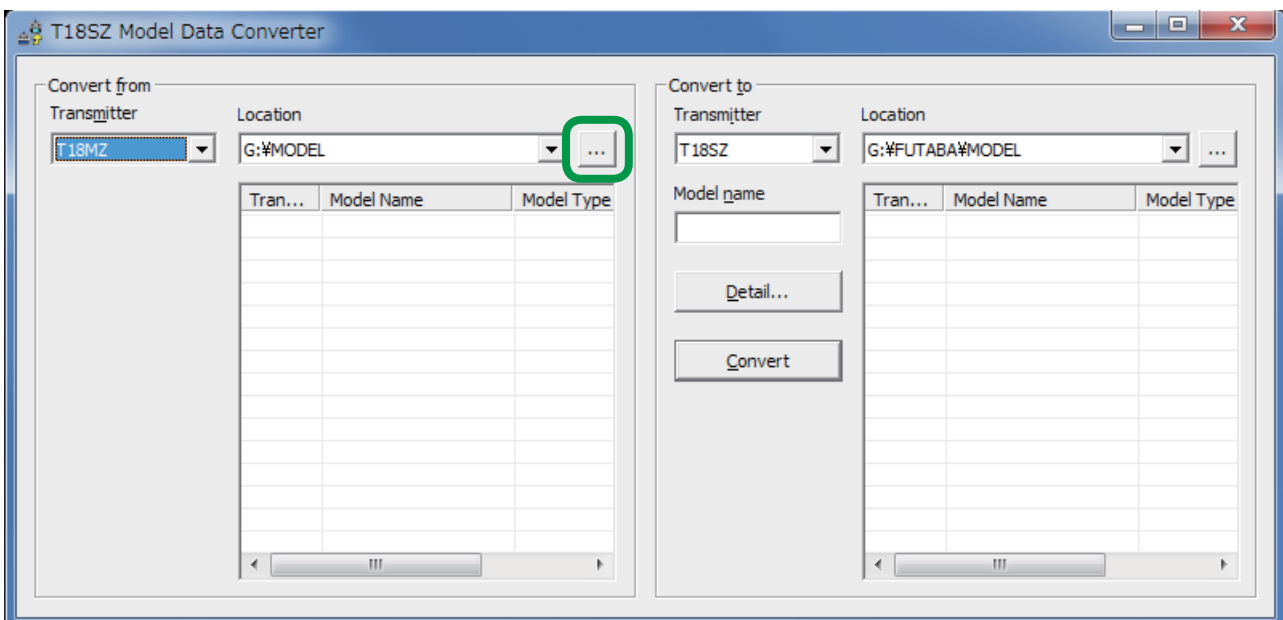
# T18SZ Model Data Converter

## 1. Preparation

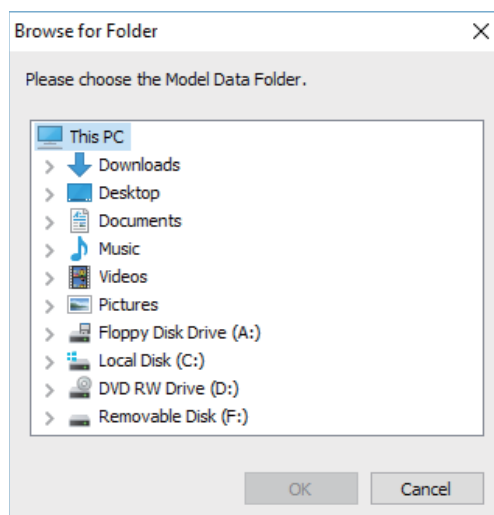
- 1.1. Please make sure that the card reader is attached to the PC prior to inserting the memory card.
- 1.2. After ensuring that the memory card of the original transmitter contains the model to be converted, place the memory card in the card reader which is attached to your PC. You can utilize the same memory card to save the data.
- 1.3. Please run the Model Data Converter. To do so, click the Model Data Converter executable.

## 2. Select the Source of the Data

- 2.1. Click the "..." button in the "Convert from" group box.

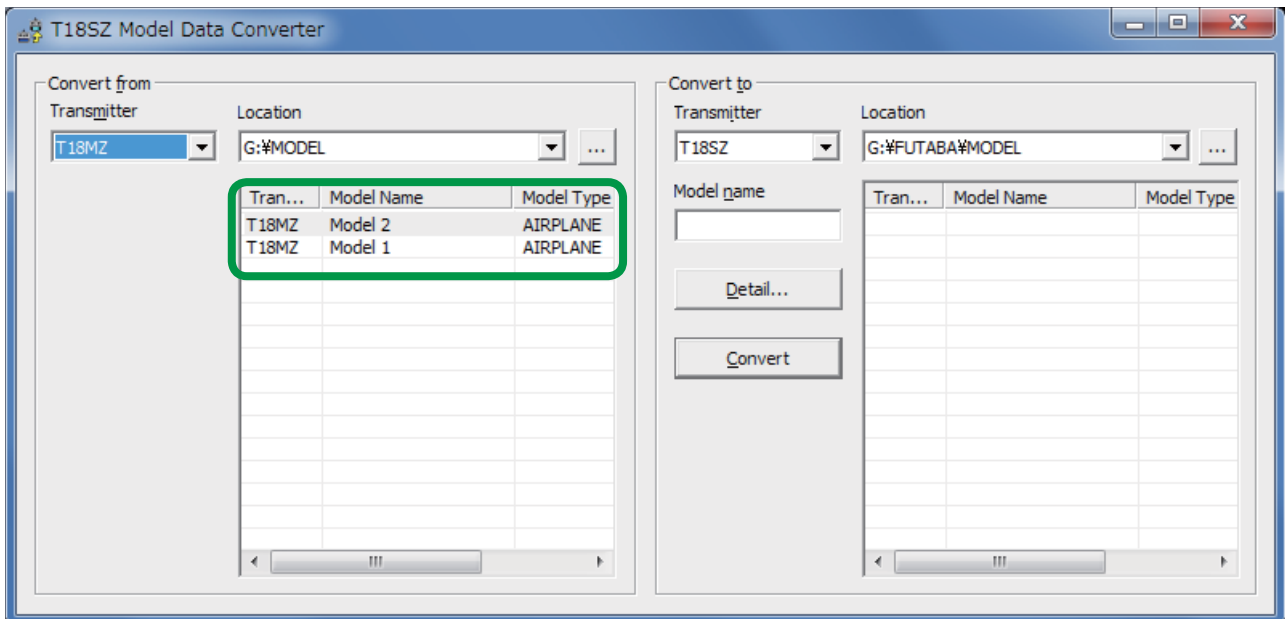


- 2.2. The "Browse for Folder" dialog, as shown below, will appear. Please select the directory and/or folder in which the model data is saved and click the "OK" button.



# T18SZ Model Data Converter

2.3. The list of the saved model data from this card will be displayed in the Transmitter, Model Name, Model Type and Date columns in the "Convert from" group box. Select the desired conversion data from this list.

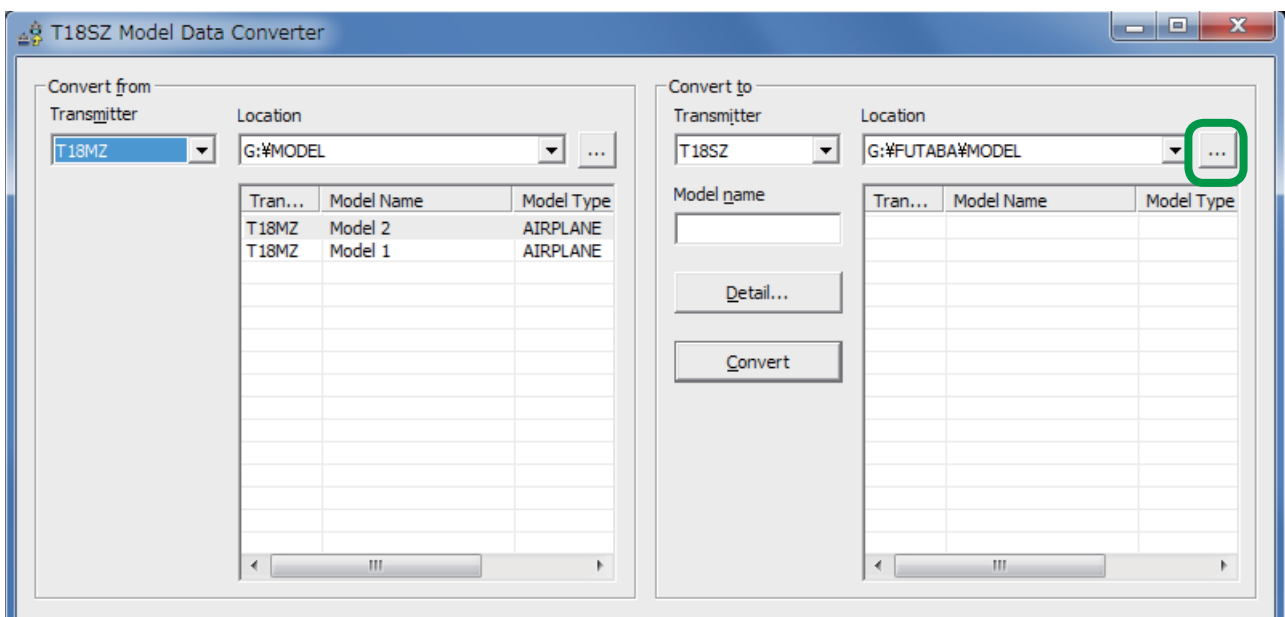


(Note) If the "Model name" text box in the "Convert to" block is blank, the selected model data name is input into this "Model name" text box automatically.

(Note) If a name is already input into the text box, it will be changed to reflect the model data name which has been selected in the "Convert from" group box.

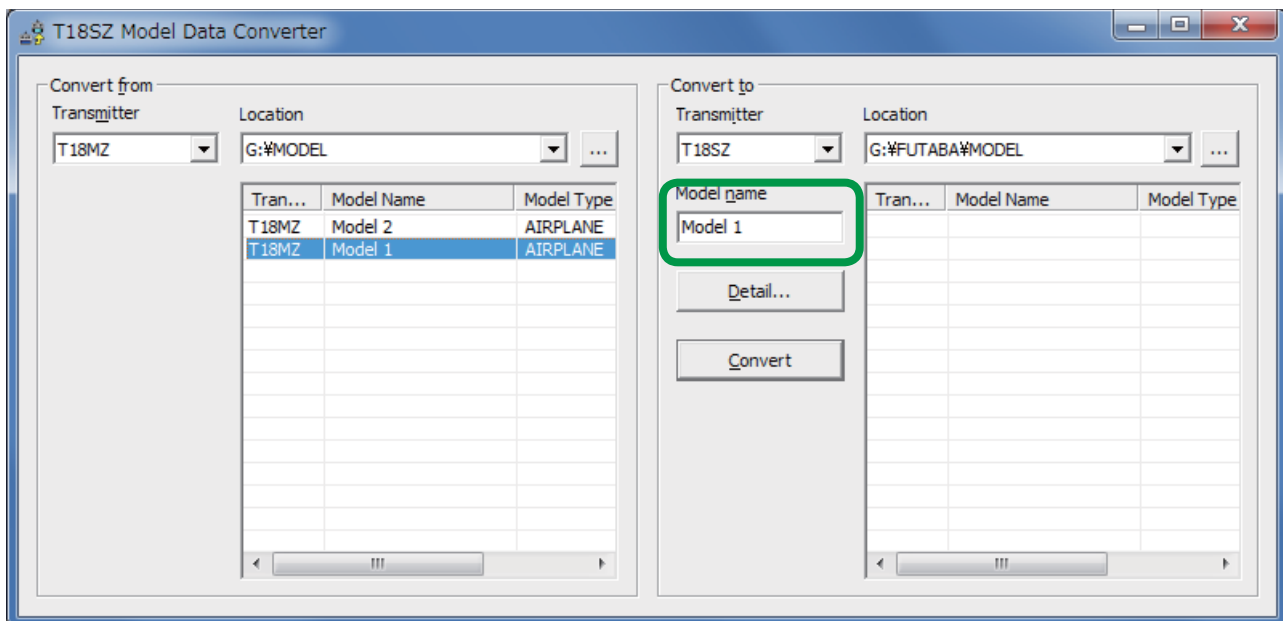
## 3. Select the Intended Location for the Converted Data

3.1. Click the "..." button of the "Convert to" group box and select the respective folder or directory designation. Once you are satisfied with the selection, click the "OK" button.



# T18SZ Model Data Converter

3.2. Click on the "Model name" text box. Using the PC's keyboard, enter a new name for the model. Please note: this will be the name displayed in the "Model name" columns of the "Convert to" group box when the data is converted.

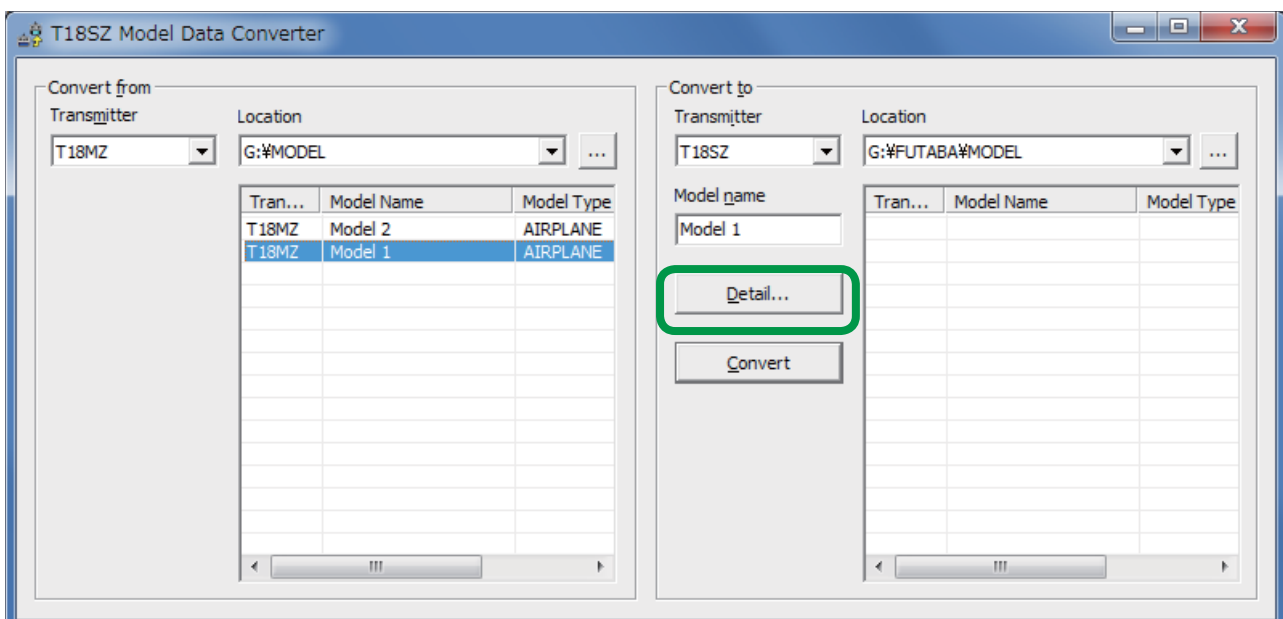


## 4. Detailed setting

It is possible to change the "condition name", "dual rate name", and "hardware assignment" during the data conversion.

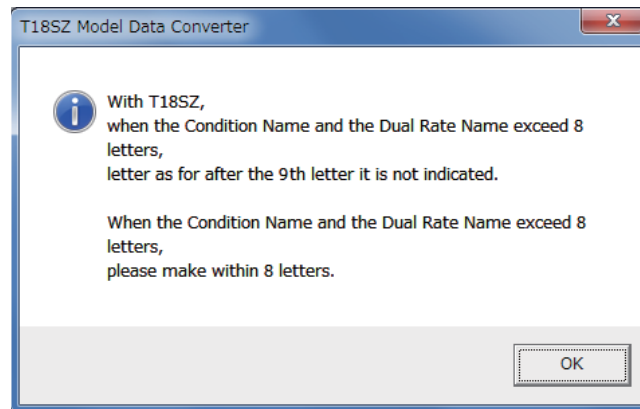
If you do not desire to make these changes, it is not necessary to follow the steps in this section.

4.1. Click the "Detail" button in the "Convert to" group box.

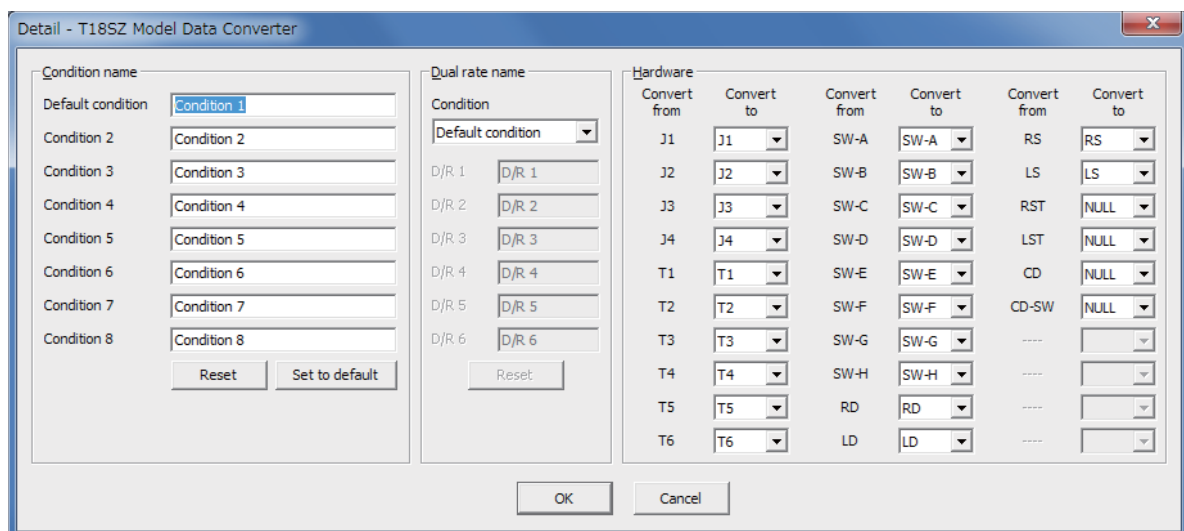


# T18SZ Model Data Converter

4.2. Click the "OK" button after you have read the information in the dialog box which appears.



4.3. The "Detail" dialogue is displayed. If you are satisfied with the detailed settings, click the "OK" button. To make refinements to this information, please refer to the information below contained in the Condition Name, Dual rate Name and Substitute Hardware function sections.



### [Condition Name]

- \* Please input the new condition name into the text box of the respective editing condition.
- \* If you click the "Reset" button of the "Condition name" block, and select "Yes" in the confirmation dialog, the condition names are initialized using the name of the conditions from the original data.
- \* If you click the "Set to default" button of the "Condition name" block, and select "Yes" in the confirmation dialog, the condition names are initialized in an abbreviated form with only eight (8) characters. For example, "CONDIT1" rather than "Condition 1".

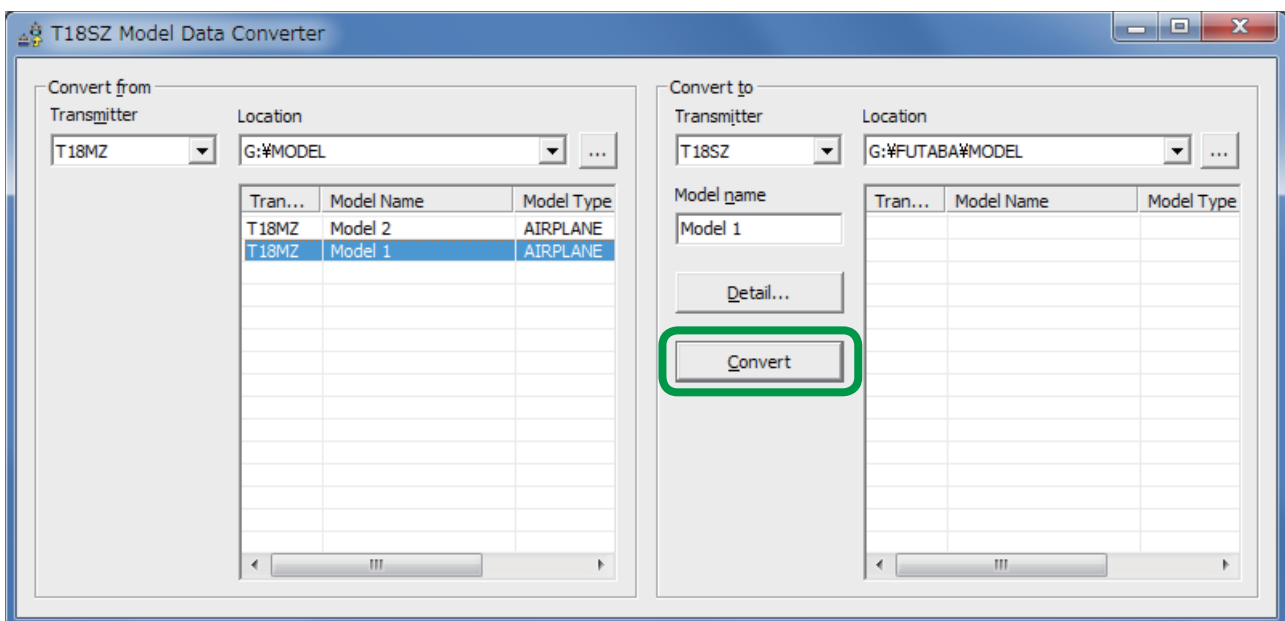
# T18SZ Model Data Converter

## [Substitute hardware function]

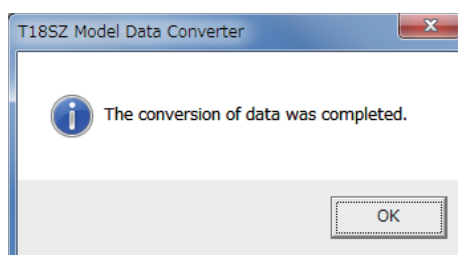
- \* The Futaba Model Data Converter can substitute hardware if the intended transmitter is not equipped with the same items. For example, if the source code transmitter utilized an "RST" designation, the converted data may be replaced by "RS" if the destination transmitter does not utilize the "RST" designation but uses "RS" instead.
- \* If the intended transmitter does not utilize the same hardware, the initial value of the hardware is set to NULL.
- \* The substitution of switch hardware and the linear hardware is not possible.
  - Switch hardware ...SW-A, SW-B, SW-C, SW-D, SW-E, SW-F, SW-G, SW-H
  - Linear hardware ...LD, RD, LS, RS, J1, J2, J3, J4, T1, T2, T3, T4, T5, T6

## 5. Data conversion

### 5.1. Click the "Convert" button.

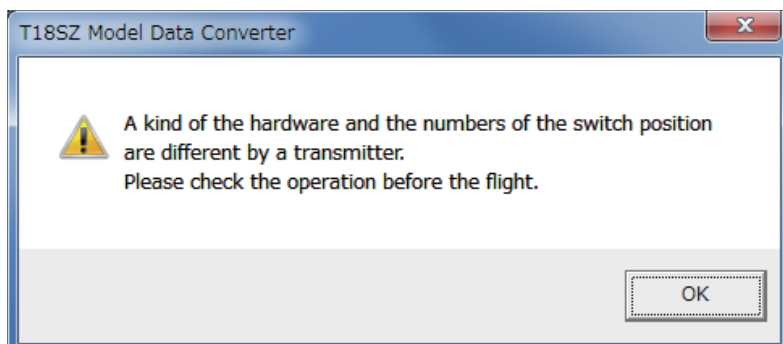


### 5.2. If successful a dialog box, as shown below, will appear. Please click the "OK" button.



## T18SZ Model Data Converter

5.3. Depending upon the source and destination transmitter models, a warning dialog might appear. Read the information in the dialog box prior to clicking the "OK" button. Additionally, we suggest that you check the operation of the model prior to flight.



## 6. Precautions and warnings

- Telemetry setting data are not converted by the converter.
- The Box/Hysterisys setting of the hardware is canceled.
- The nested logic switch is set to NULL.
- All logic switches except the "Condition Select" are set to NULL.
- The Linear/VTR/Spline curve is changed to a point curve.
- The combination setting is set to Single mode unless it is set in all Condition to Group.
- The setting of "Fuel Mixture" and "Multi Engine" are initialized.

## 7. Error Message

<b>Message</b>	No items were selected in the "Convert from" group. Please select an item on the model list.
<b>Explanation</b>	The model name of conversion data is the same as an existing model name.
<b>What to do</b>	Model data cannot be displayed on a list of "Convert from" block. Please set "Location" of the "Convert from" block to the location where the source conversion data is saved. If the location is correct, the items are displayed on the respective list and it will be possible to select amongst these items.

<b>Message</b>	There is "file path" file. Please change the Model Name.
<b>Explanation</b>	There is already the model data of the same name. As such, you must rename the data accordingly.
<b>What to do</b>	Please input a unique name into the "Model name" text box of the "Convert to" group box. You can confirm the name of other model data from the list of the "Convert to" group box.

<b>Message</b>	The "Transmitter" type of the "Convert from" group is not correct. Please check the "Transmitter" type and the items on the model list in the "Convert from" group.
<b>Explanation</b>	The transmitter type information of the source code information is different from the transmitter type chosen in "Transmitter" of the "Convert from" group box.
<b>What to do</b>	Confirm that the model data are for T18MZ.

<b>Message</b>	Could not open the "file path" file. Please check the Location in the "Convert from" group.
<b>Explanation</b>	After the setting of origin of conversion data, it appears that a file was erased, or that the memory card was removed prematurely.
<b>What to do</b>	Select the source conversion data once again.

<b>Message</b>	Could not open the "file path" file. Please check the Model Name and the Location in the "Convert to" group.
<b>Explanation</b>	After the selecting the source data, it appears that a folder set in the "Location" of the "Convert to" group box was erased, or that a memory card was removed prematurely.
<b>What to do</b>	Choose the location of conversion data once again



## T18SZ Model Data Converter

<b>Message</b>	Unsupported data selected. This data is saved with the transmitter of an older version of the software. Please update your transmitter accordingly.
<b>Explanation</b>	The structure of model data is different in the version saved in the transmitter's memory. As such, the model data converter cannot convert the old data as it is unsupported.
<b>What to do</b>	Select the origin of conversion data in the "Model Select" screen of the transmitter after it has been updated to the latest software version. Next, try converting the data once again.

<b>Message</b>	Unsupported data selected. Please use a newer data converter.
<b>Explanation</b>	The structure of model data is different than the version of a saved transmitter. The model data converter cannot support the data of the future transmitter software.
<b>What to do</b>	Download the latest version of the model data converter. Next, try converting the data once again.

<b>Message</b>	Please enter a model name into the "Model name" in the "Convert to" group.
<b>Explanation</b>	The "Model name" text box in the "Convert to" block is blank.
<b>What to do</b>	Enter a model name into the "Model name" in the "Convert to" group box.

<b>Message</b>	The model name is too long. Please check the "Model name" in the "Convert to" group. When converting data to the T18SZ, please edit the model name so that it is no longer than 8 characters.
<b>Explanation</b>	The number of model name characters exceeds the allowable limit.
<b>What to do</b>	Enter a shorter name into the "Model name" in the "Convert to" group box.

<b>Message</b>	The use of the character which is not usable for a model name in the T18SZ. Please check the "Model name" in the "Convert to" group.
<b>Explanation</b>	The model name contains unusable characters. Some characters cannot be used for a model name in the T18SZ. For example, "Japanese KANJI".
<b>What to do</b>	Please enter a new model name into the "Model name" in the "Convert to" group box. (Note) The following characters are usable for the T18SZ. 0 to 9, A to Z, a to z, and signs ( " * / : < > ? \   are unusable).