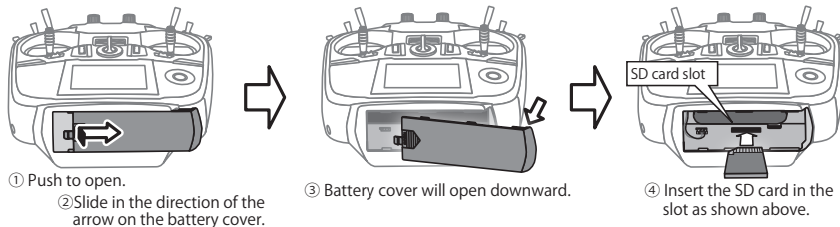


# T14SG SOFTWARE UPDATE MANUAL

### [Updating procedure]

## 1. SD card format

1. You will first want to format your SD card to the 14SG. If you are using an existing SD card, any data previously saved to it will be deleted during the "format". We suggest you either save this data on your computer or purchase a new card.



2. After inserting the new SD card into the transmitter, turn on the power switch. You will see the word "FORMAT" if you have not previously used this card in the transmitter.

THIS CARD HAS  
NOT BEEN INITIALIZED.  
**CANCEL**      **FORMAT**

- 3. Please select "YES" and touch "RTN" .**

SURE ?

CANCEL YES

4. The following screen is displayed during formatting.

NOW FORMATING...

- 5.** When the format is completed, the following screen is displayed.

FORMAT COMPLETED.

YES

6. Turn off the power switch and remove the SD card from its slot.

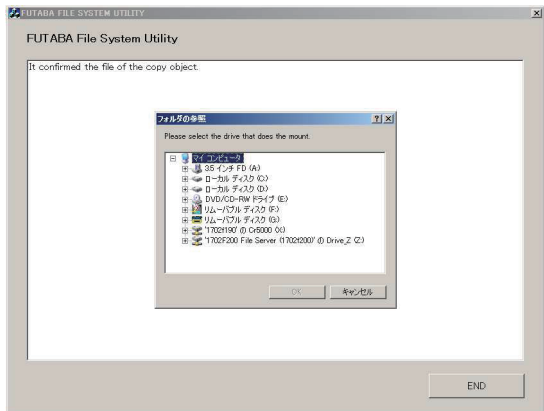
## 2. Preparing the software update card.

- 1.** Please unzip the zipped file. The following files will be created.

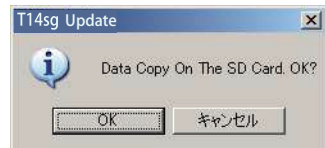
- T14sgUpdate.exe ... File copy utility
- T14sgUpdate.dat ... Information file for T14sgUpdate.exe
- T14SG\_UPDATE.dat ... Identified file of T14SG
- T14SG\_TS.bin ... Update file of T14SG (piece 3)
- T14SG\_AP.bin ... Update file of T14SG (piece 2)
- T14SG\_UPLD.bin ... Update file of T14SG (piece 1)



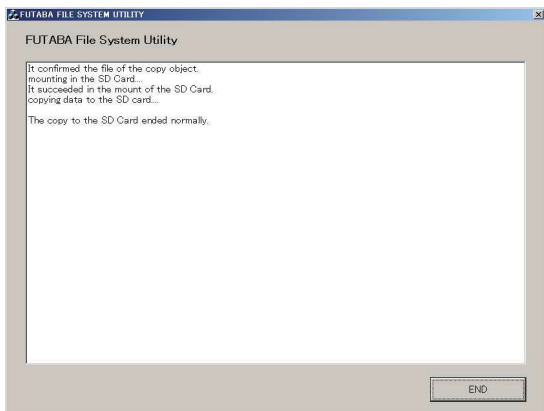
2. Insert the 'formatted" SD card into a card reader in your PC.
3. Please run "T14sgUpdate.exe".



4. Select the drive that your card reader is assigned to in your PC.



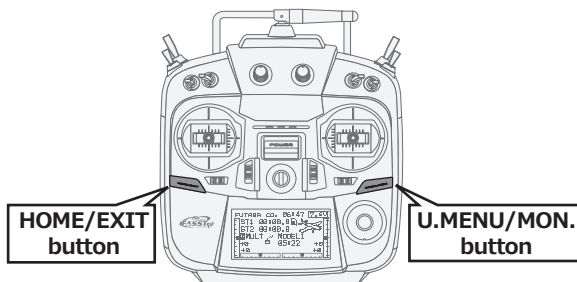
5. After the Update files are copied to the SD card, the following screens are displayed. Click the "End" button.





### 3. Update software of T14SG

1. Please insert the SD card which includes the update file.
2. Push the **HOME/EXIT** button.
3. While still holding the **HOME/EXIT** button, power on the transmitter.



4. After a few seconds, the following screen is displayed.

PROGRAM UPDATE  
START : PUSH MON . 3SEC

5. Push the **U.MENU/MON.** button for three seconds. The software update will begin.

PROGRAM UPDATE  
UP LOADING



6. When the update is complete, the following screen is displayed. Turn off the power switch.

PROGRAM UPDATE  
COMPLETED



7. Remove the SD card.

8. Please check the software version at INFO in SYSTEM menu.

SYSTEM MENU	
TRAINER	START SEL.
DISPLAY	AUTO LOCK
USER NAME	INFO
SOUND	SBUS SERVO
H/W SET	

INFO	
PRODUCT	012050002
RF ID	122920001
LANGUAGE	ENGLISH
VERSION	2.0
AREA	JAPAN
CARD SIZE	8/3766



# **T14SG Installing Speech Data**

Before installing the speech data, you will need to update your T14SG software to Version 2.0 or later.

If the software version of T14SG is before Ver.2.0, the speech data can not be installed.

There are three language versions, English, German, and Japanese, in speech data. It is possible to install only one language.

If you install a second language, it will override the first one that you installed.

---

## **[Installing procedure]**

### ***1. Making of card for installing speech data***

1. Please unzip the zipped file. The following files will be created.

#### **English Version**

- T14sgInstallSoundEng.exe ... File copy utility
- T14sgUpdate.dat ... Information file for T14sgInstallSoundEng.exe
- T14SG\_INSTALL\_SOUND.dat ... Identified file
- T14sgSpeechEng1.bin ... Data file (piece 1)
- T14sgSpeechEng2.bin ... Data file (piece 2)
- T14sgSpeechEng3.bin ... Data file (piece 3)

#### **German Version**

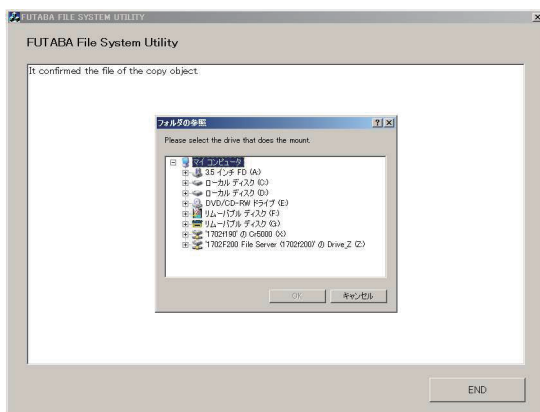
- T14sgInstallSoundEng.exe ... File copy utility
- T14sgUpdate.dat ... Information file for T14sgInstallSoundEng.exe
- T14SG\_INSTALL\_SOUND.dat ... Identified file
- T14sgSpeechGer1.bin ... Data file (piece 1)
- T14sgSpeechGer2.bin ... Data file (piece 2)
- T14sgSpeechGer3.bin ... Data file (piece 3)

#### **Japanese Version**

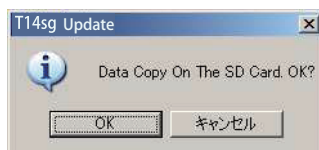
- T14sgInstallSoundEng.exe ... File copy utility
- T14sgUpdate.dat ... Information file for T14sgInstallSoundEng.exe
- T14SG\_INSTALL\_SOUND.dat ... Identified file
- T14sgSpeechJpn1.bin ... Data file (piece 1)
- T14sgSpeechJpn2.bin ... Data file (piece 2)
- T14sgSpeechJpn3.bin ... Data file (piece 3)



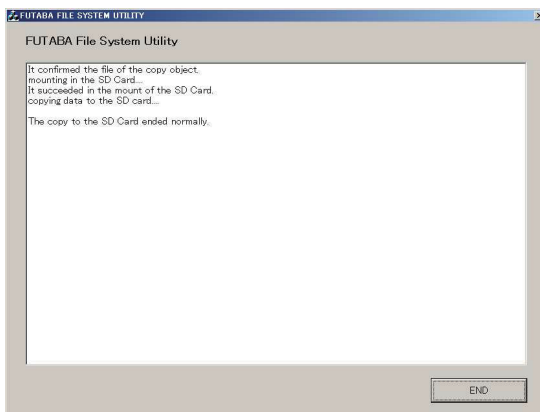
2. Install the already formatted SD card into your PC's card reader.
3. Please run "T14sgInstallSound\*\*\*.exe".



4. Select the drive that your card reader is assigned to in your PC. Click "OK".




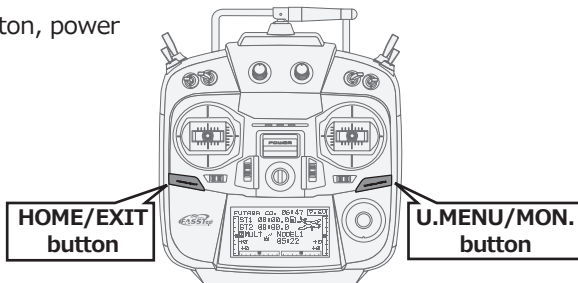
5. After the Update files are copied to the SD card, the following screens are displayed. Click the "End" button.





## 2. Install speech data of T14SG

1. Please insert the SD card which includes the installing speed data.
  2. Push the **HOME/EXIT** button.
  3. Still holding the **HOME/EXIT** button, power on the transmitter.
- 



4. After a few seconds, the following screen is displayed.

**INSTALLSOUND**  
**START : PUSH MON . 3SEC**

5. Press the **U.MENU/MON.** button for three seconds. The speech data begins to install.

INSTALLSOUND  
INSTALLING

6. After about 16 seconds, uploading reaches the right of the progress bar, and then begins again after a pause.

INSTALLSOUND

- 7.** The uploading may appear to progress slowly.

INSTALLSOUND  
INSTALLING

- 8.** The progress bar will again upload. This can take a few minutes.(About. 2 min.)

INSTALLSOUND  
COMPLETED

And, "COMPLETED" is displayed. Please turn off the power.

(Don't turn off the power before COMPLETED is displayed.)

9. Please detach SD card.
10. Please check the language at **TELEM.SET.** menu in LINKAGE menu.