



SBD-Link Software Manual

The operating channels of the Futaba **S.BUS** decoder **SBD-1** can be set and changed from a PC by using this software. Since the Futaba **CIU-2** USB adapter and power supply (4.8~6V battery) and Y-harness (or **S.BUS** hub) are necessary, procure them beforehand and place into the state in which the **CIU-2** is operated properly from the PC.

***Note: The SBD-Link software is for Windows® 7/Vista/XP use and is not compatible with other OS.**

Downloaded Zip file extraction (decompression).....	P2
SBD-Link software installation	P2
CIU-2 and SBD-1 connection.....	P4
How to use the SBD-Link software	P5

Distribution & exemption of liability

- Futaba Corporation shall not be responsible for any damage caused by use of this software. Use this software based on agreement to this.
- The copyright of this software and document resides with Futaba Corporation. Redistribution without the approval of the copyright holder is prohibited.
- Reverse engineering and modification of this software is strictly prohibited.
- No part of this manual may be reproduced in any form without prior permission.
- The contents of this manual are subject to change without prior notice.
- While this manual has been carefully written, there may be inadvertent errors or omissions. Please contact our service center if you feel that any corrections or clarifications should be made.

Downloaded Zip file extraction (decompression)

The downloaded **SBD-Link** software file is a Zip format file. Extract (decompress) this file, the procedure is shown as below.

*Download the **SBD-Link** software file from your Futaba importer's home page.

1. Double click the Zip format file to display its contents.
2. Click "Extract all files". The Extraction Wizard launches.
3. Extract (decompress) the Zip format file to the same location as the Zip file storage location.

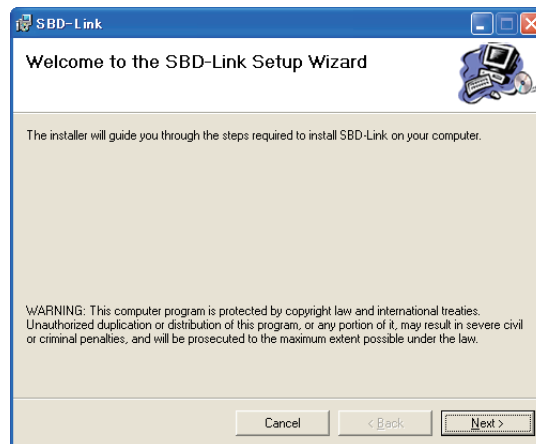
***SBDLink.msi** file and **setup.exe** file are extracted.

SBD-Link software installation

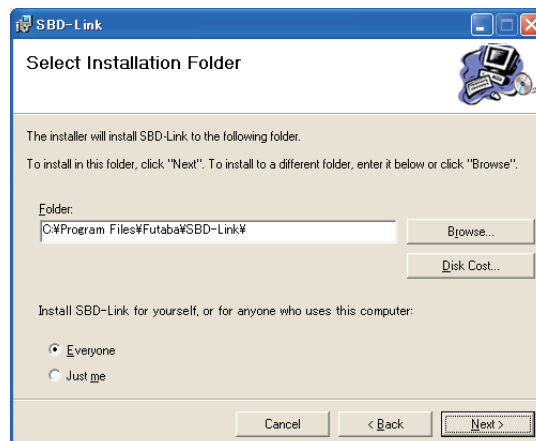
Before installing the **SBD-Link** software, confirm that all other applications are closed. Close all virus check and other resident programs, if any.

Installing the SBD-Link software

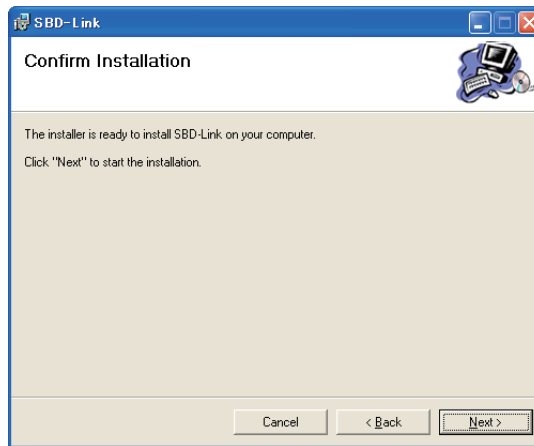
1. Double click the EXE file named "setup", and push the "Next" button.



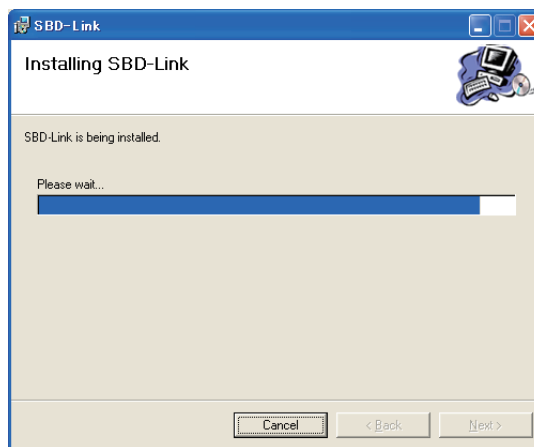
2. Choose the target folder, and push the "Next" button.



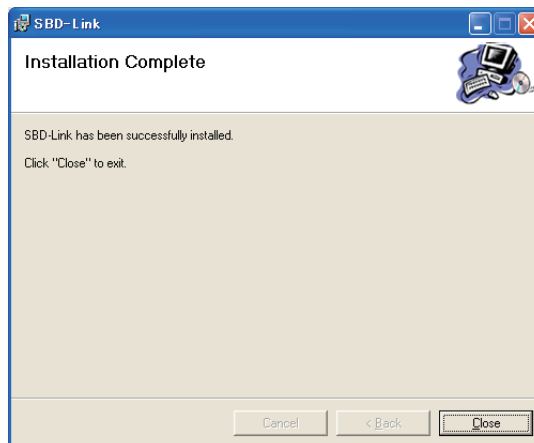
3. Push the "Next" button.



4. The install process begins.



5. The installer displays the following after the install process. Push the "Close" button.



Uninstalling the SBD-Link software

To uninstall the SBD-Link program from the computer, use the Windows "Add/Remove Programs" function.

1. Open "Control Panel" from the "Start" button at the bottom left side of the Windows desktop. And Launch "Add/Remove Programs".
2. Select "SBD-Link" and remove it.

CIU-2 and SBD-1 connection

Connect **SBD-1**, **CIU-2** USB adapter, 4.8~6V battery and Y-harness (or **S.BUS** hub) as shown below.

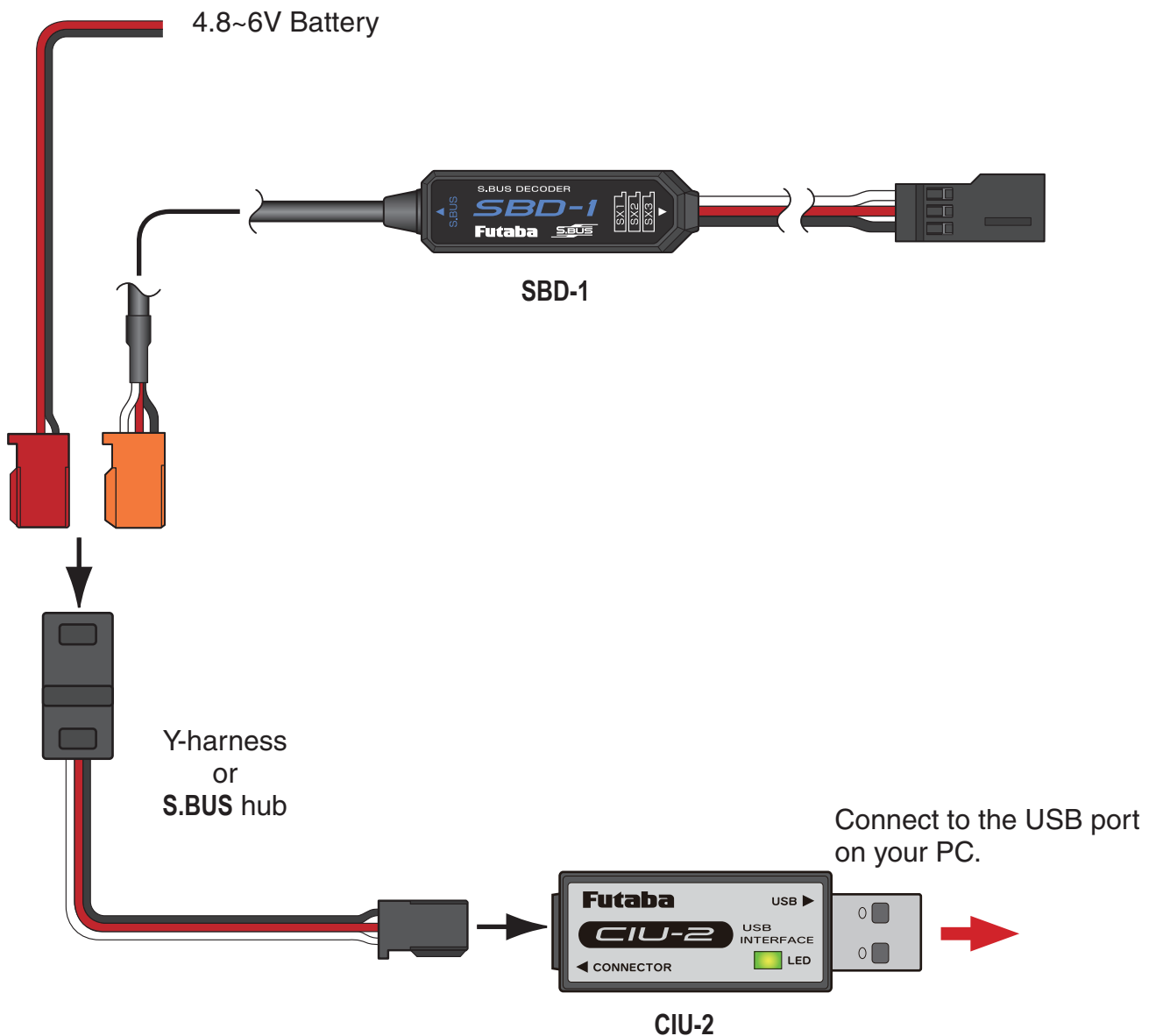
Installing the CIU-2 device driver

A **CIU-2** USB adapter is necessary to execute this software. Before using this software, please install the **CIU-2** device driver. If the **CIU-2** USB device driver has already been installed, advance to the next step.

*The **CIU-2** device driver is available at the download corner of your Futaba impoter's home page.

1. Connect the Y-harness or **S.BUS** hub to the **CIU-2**.
2. Connect the **SBD-1** and the batteries to the Y-harness or **S.BUS** hub.
3. Connect the **CIU-2** to the USB port on your PC.

- The **CIU-2** LED turns on green.



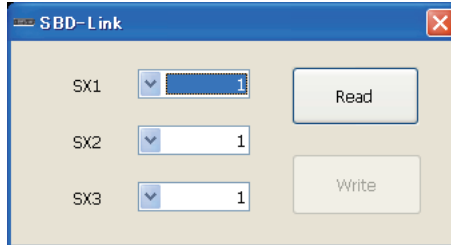
How to use the SBD-Link software

Starting the SBD-Link software

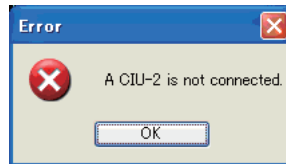
1. In the state in which the **SBD-1** was connected to the PC by the previous described connection method, select Windows Start button, “All Programs”, and program file “SBD-Link” in “Futaba” sequentially.

*The display may be different depending on the OS type and setting.

2. The setup screen shown below appears.

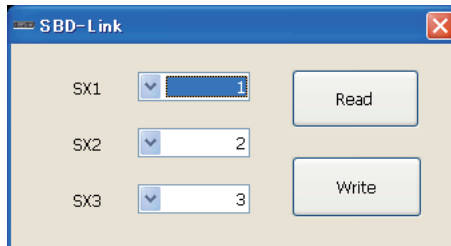


*If the message shown below is displayed, the **CIU-2** is not properly connected to the PC. Press the “OK” button and check the connection and repeat step 1 and 2.



Reading the parameters from the SBD-1

1. Click the “Read” button.
2. The state of the parameters currently programmed at the SBD-1 is displayed.



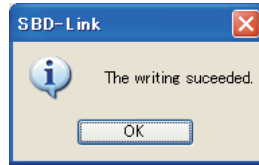
*When reading of the parameters failed, an error message is displayed. In this case, recheck the connection and read the parameters again.



Writing the parameters to the SBD-1

1. Change the channel of the **SBD-1** output (SX1-SX3) by clicking the down arrow next to the number and selecting a different channel.
2. After the channel setting is complete, press the "Write" button. This operation transfers the modified parameters data to the **SBD-1**.

*If the data was transferred to the **SBD-1** normally, the following message will appear.



Note: Do not pull out the lead wire or turn off the power while the parameters are being written.

3. Disconnect the **SBD-1** from the **CIU-2**.