

T7PX Software Update Method

Whenever improvements and new functions are available, the software of your T7PX radio transmitter can be updated easily via online free of charge. The updated software file will be shown on our website. You can download it and make a copy on your microSD card. Below is the procedure for the software update.

Procedure for the software update

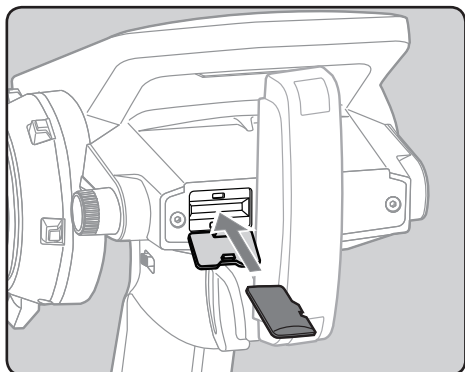
Caution: Before you update the software, the battery that is connected to the T7PX should be fully charged.

Note: During the software update, the model data that is stored in the T7PX should be kept without any change. (NOT erased and NOT changed.) However, for your safety, making a backup of your model data before the software update is highly recommended.

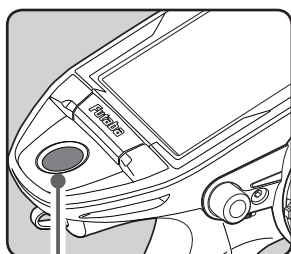
1. Download the zip file of the update data from our website.
2. Extract the zip file on your computer.
3. The "FUTABA" folder will be created on your computer.
4. Copy the "FUTABA" folder into your microSD card.

Note: If the microSD card has already had "another FUTABA" folder before you make a copy, the "FUTABA" folder is **OVERWRITTEN**.

5. Insert the microSD card with "FUTABA" folder that contained the update software into the SD card slot on your T7PX radio transmitter.



6. Turn on the transmitter power while pressing down the "HOME" button. The update screen appears on the LCD display of your T7PX and the software update is started.



HOME button

7. When the software update is completed, "Completed" message is shown on the LCD display of your T7PX. (Show below picture.)



8. Turn off the power switch of your T7PX and remove the microSD card from the card slot.

Possible Problems

When one of the error messages shown below appears on the LCD screen your T7PX, the software update will not be completed.

"Low battery."

Software update is postponed because of low battery. Retry the software update after the battery is recharged.

"Update file not found."

The T7PX cannot find the update file on the microSD card. Check to be sure all the update files have been copied onto the microSD card.

"Broken file."

The T7PX detects the update file error. The update file may be broken or for another transmitter.

"Write error."

The software update procedure is stopped for an unknown reason. Contact your local service center when this error message appears on the LCD screen of your T7PX.

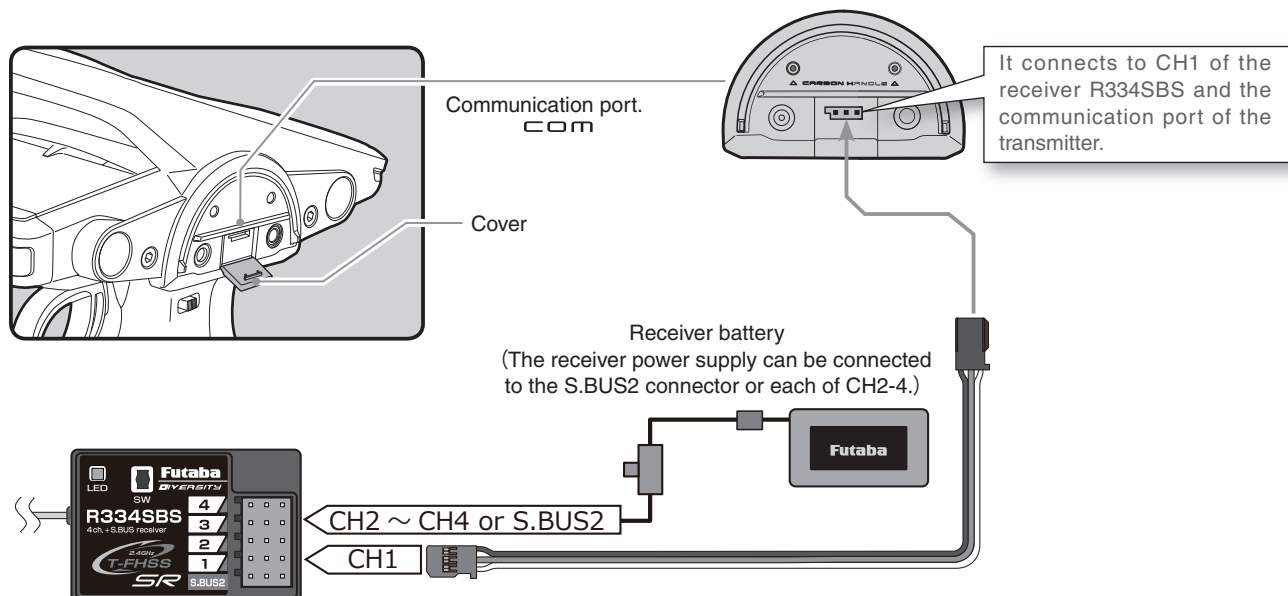
Futaba has added a function to program your Futaba R334SBS receiver from the T7PX.

To update the receiver, you need a PC that can be connected to the Internet, a mini driver (to push the switch of the receiver), a micro SD card (commercial product), and a cord for CGY750 / GY701 / GY520 (optional) or DSC cord (optional).

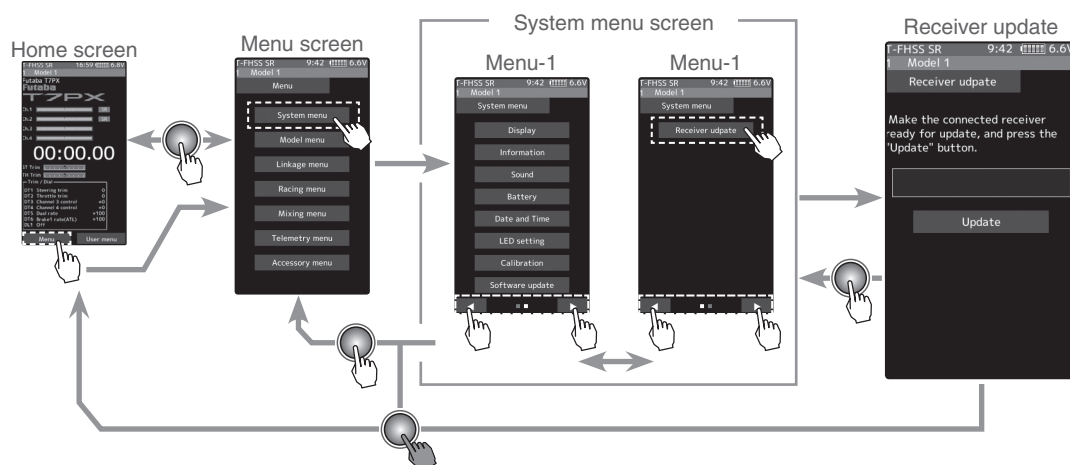
Preparing for update

- Download the zip file of the update data from our website or your local distributor's website.
- Extract the zip file on your computer. A folder named "FUTABA" is created.
- Insert the micro SD card that contains the "FUTABA" folder into the T7PX (see page 31 of the manual).

Connection between T7PX and R334SBS

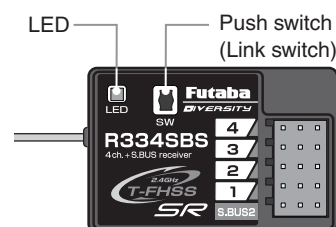


Turn on the DSP or PWR switch of T7PX and display the receiver update screen.



Update method

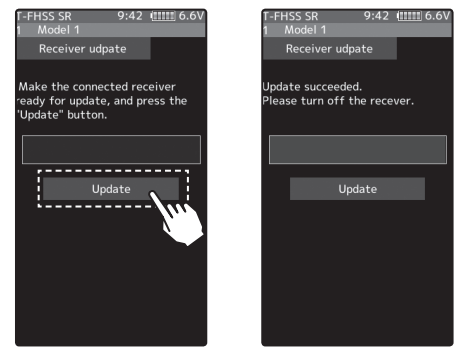
- 1 Hold down the Link switch first, and turn ON the receiver.
After the LED flashes red once, release the Link switch and then press it again.
As you continue holding down the Link switch, the LED starts flashing red and green. (Once flashing Red and Green, the initial process is complete.)
- If red and green do not turn on at the same time, please start over from the beginning.



- 2** Tap the "Update" button on the screen. The update will start. A progress bar will be displayed indicating the progress. The LED of the receiver turns green, and it blinks green for a moment every time it accepts data from the T7PX.

- Do not turn off the power of T7PX while updating.

- 3** When the update is completed, a message is displayed on the screen, and the LED of the receiver stays flashes green. Please turn off the power of the receiver.
Please check the operation before running (cruising).



- 4** When finished, return to the System menu screen by pressing the HOME button.

Error

If an error display appeared, reinstall the update from the beginning.

- The receiver is not in the update wait state.
- The cable is disconnected.
- The power has been turned off
- The micro SD card is not inserted in the T7PX.
- There is no data on micro SD card.

Forced initialization

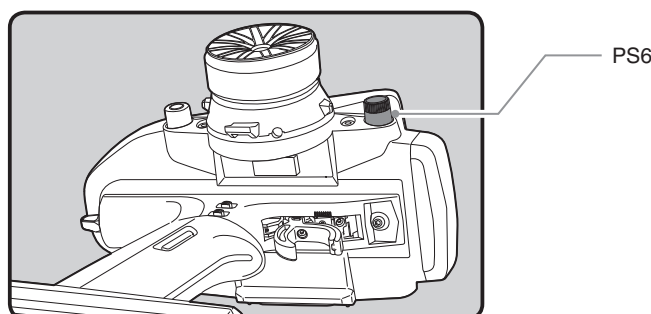
In the unlikely event that the model data is damaged and the T7PX stops working properly, it is possible to initialize the current model data in the following way.

Note:

This operation completely initializes the model data. Please do not use it except when data is broken.

How to Initialize

- 1** While pressing the PS6 switch, turn on the transmitter power.



- 2** A confirmation screen, "Caution!! The current model data will be initialized. Sure?", will be displayed.
- 3** Touch [Yes] to carry out initialization and turn off the power. Since the current model data will be initialized, please re-set the data and check the operation carefully before use. To cancel the operation, touch [No]. The power is turned off without initializing the data.

- After initialization, the current model data will be initialized, so please set the data again before using and confirm the operation.

