

## 14MZ Update Instructions

**Q. I want to use the latest update for my 14MZ, but am not sure how to do it. Can you help me?**

**Click here to download this FAQ as a printer-friendly Word document.**

A. You will need a "Card reader" such as a Sandisk or other brand for your home computer to do this update. The instructions are listed below:

1. You will need to go to the web site and click on the link for the update.
2. The file will ask if you want to Open or Save. Click on Save and save this to your Desktop.
3. Once you have this saved to your Desktop, you will need to connect your card reader and insert your blank CF card from your transmitter.
  - A. If you have models saved to your CF card, then you will need to create a separate file folder on your desktop and copy all models on the card into the new folder. You may want to label this folder as "My models".
  - B. Once you have copied these models over to your new folder on your PC, you will want to delete all of them off the CF card. Don't worry, you have these backed up on your PC, you can reinstall them after we are done with this update.

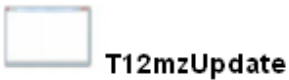
### **IF YOU DO NOT HAVE WINZIP ON YOUR COMPUTER:**

- A. With your now empty CF card inserted into your card reader, you will open the update and install it onto the card. To do this, it is recommended to RIGHT click on the icon and "Open With" a Compressed file. This will format the Update file as it needs to be. You will see three items, a T2mz update as a Text document, a T12mz Update as an EXE. Program and a folder that says Update. Hold and drag each of these three items to your CF card file.
- B. Now follow the attached instructions regarding inserting the card and doing the actual update.
- C. Once this is done, you may now delete this update file from your CF card using your card reader and copy and paste your Model files, WAV, JPEG and WMA files back to your CF card.

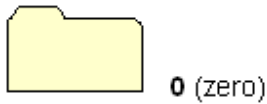
### **IF YOU HAVE WINZIP ON YOUR COMPUTER**

If you have WinZip on your PC, you will need to first go into Winzip, set up a "Favorite file" and when you click on the update link on the web site, you will need to save to a file or your desktop but leave the file type at the bottom of your selection as WinZip. After doing this and saving, open WinZip, then open your "favorites" file in WinZip and you will now see the update. Unfortunately it will not be configured as it should be on the card. So you will need to configure the files in this manner.

- A. With WinZip opened to the correct file T14mz\_Update1\_0\_10, you will see the first item is a Text document T12mzUpdate.dat, click on drag this to your CF card folder, the next item is T12mUpdate.exe, click and drag this also to your CF card. The next few items are Gen files, these and the abx. and cde. files need to be put in a special folder. Right click on a blank spot in your CF card folder, you will see "New", here you will select and click on New Folder. Once you have created this, Rename this as Update. Now do the same procedures but this time do this in the Update folder you just created. This new folder you need to name "0" (zero). Open this new "0" folder and drag all five files to this one.
- B. The update for the 14MZ MUST be configured in this order to work correctly. The following is how they should appear when unzipped.



Click **UPDATE** folder, you should see a folder named **0** (zero)



Click **0** folder, you should see five files:

**Genm2329.CDE**  
**Genw2329.CDE**  
**T14MZ.abx**  
**T14MZ**  
**uGen2329.CDE**

- C. So on the CF card when you first click on it, there will be three things showing, the **Update** file (with the 0 file inside) the **dat** and the **exe** files.
- D. You are now ready to proceed with the rest of the instructions regarding inserting the card and doing the actual update.
- E. Once this is done, you may now delete this update file from your CF card using your card reader and copy and paste your Model files, WAV, JPEG and WMA files back to your CF card.

## Instruction Manual for Software Updating

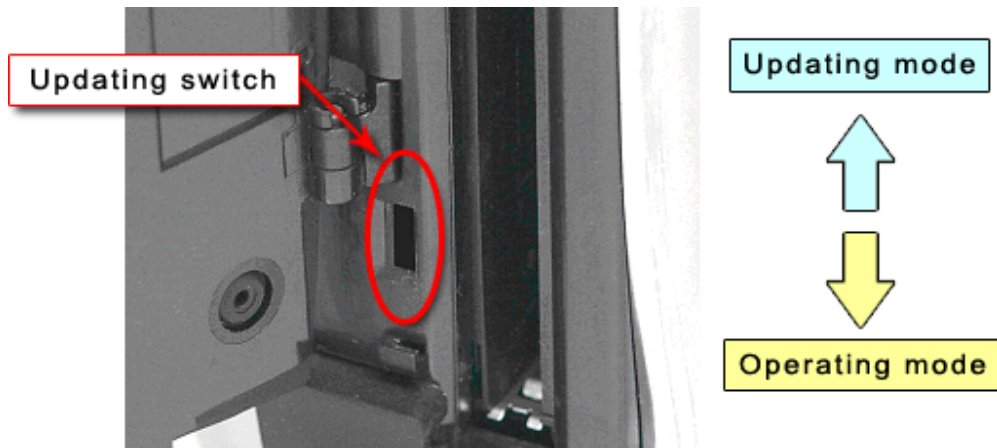
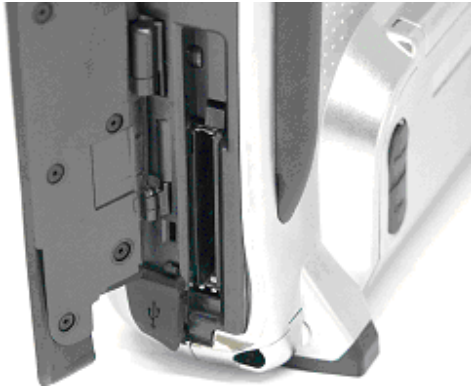
**Caution:** To have power available for updating software properly, you must recharge the transmitter battery if its capacity is below 50%.

**Caution:** For safety reasons, please backup all of your model data to the CF card. You can use the current model data after successfully completing the update.

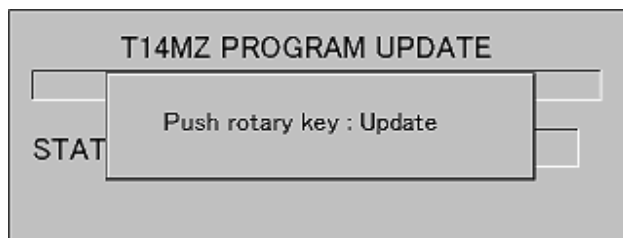
1. The updating software is in a zip file. Decompress the zip file into Windows files.
2. After decompressing the zip file, you'll find two files and one file folder. Copy these files to the CF card using an off-the-shelf CF card reader. (The memory size required is approx. 8.5 MB.)  
File 1: T12mzUpdate.dat

File 2: T12mzUpdate.exe  
Folder: UPDATE

3. Turn on the updating switch located beside the CF card slot.



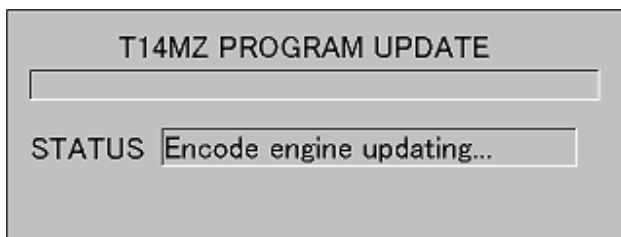
4. Insert the updating CF card into the CF card slot.
5. Turn on the power switch. After approx. 10 seconds, you should see the LCD display below.



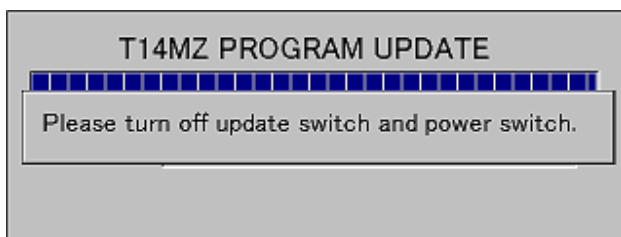
If the updating program cannot be found on the CF card, you'll see the following LCD display.



6. Push the rotary key. The update will start automatically. The bar graph shows the installation process.



7. When the update is completed, you'll see the LCD display shown below.



8. Turn off the power switch. When the LED is no longer lighted, turn off the updating switch.

---

#### Software version confirmation

To be sure that the updated version of software has been installed, check the information screen on the system menu.

