

**THE POWER FOR CLIMBING. THE SPEED
FOR RACING. THE ENGINE FOR BOTH.**

30VG™



Torque — or speed. Time was that an 1/8 scale engine was designed for one or the other. However, monster trucks and truggies need both — and that requires the O.S. 30VG.

With its virtually perfect balance of bore-to-stroke, the 30VG offers unrivaled adaptability for 1/8 scale and the perfect power plant for almost any application. Put it in a monster truck or truggy and it excels. Put it up against .21s, .25s and .28s, and it blows them away in big-block performance — and drops into the spaces they occupied for easy, no-mod retro-fits.

Engineered for 1/8 scale — designed and tested for O.S. dependability on-road or off.

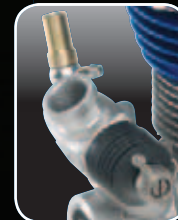
- Available in three SG-crank versions, including a recoil start model and an SR model purpose-designed for the HPI Savage.
- Rear-exhaust design
- Machined aluminum piston
- Double-bushed, tapered aluminum conrod for minimal wear and weight.
- 3-port liner
- Oversized balanced crankshaft for added strength and smooth, vibration-free operation.
- Rubber-sealed front bearing reduces teardowns — enlarged rear bearing minimizes vibration and improves load-bearing capacity.
- Insulated carb sleeve prevents heat-related vaporization and pre-detonation
- Rubber shaft boot preserves smooth, easy slide-valve operation.



Built with O.S. ABL™ Technology!

The 30VG's ABL (Advanced Bimetallic Liner) fuses two exclusive alloys into a single, lasting layer of wear protection! ABL Technology — only from O.S.!

Savage owners can upgrade to 30VG power and speed with no mods and minimum work. It's not only designed for use with the Savage clutch assembly, but with the Roto Start Ignition system, too.



The big 21E carb features two screwdriver-adjustable needles for safe, easy tuning and a slide-valve for smooth, linear throttle control on paved tracks or untamed terrain.

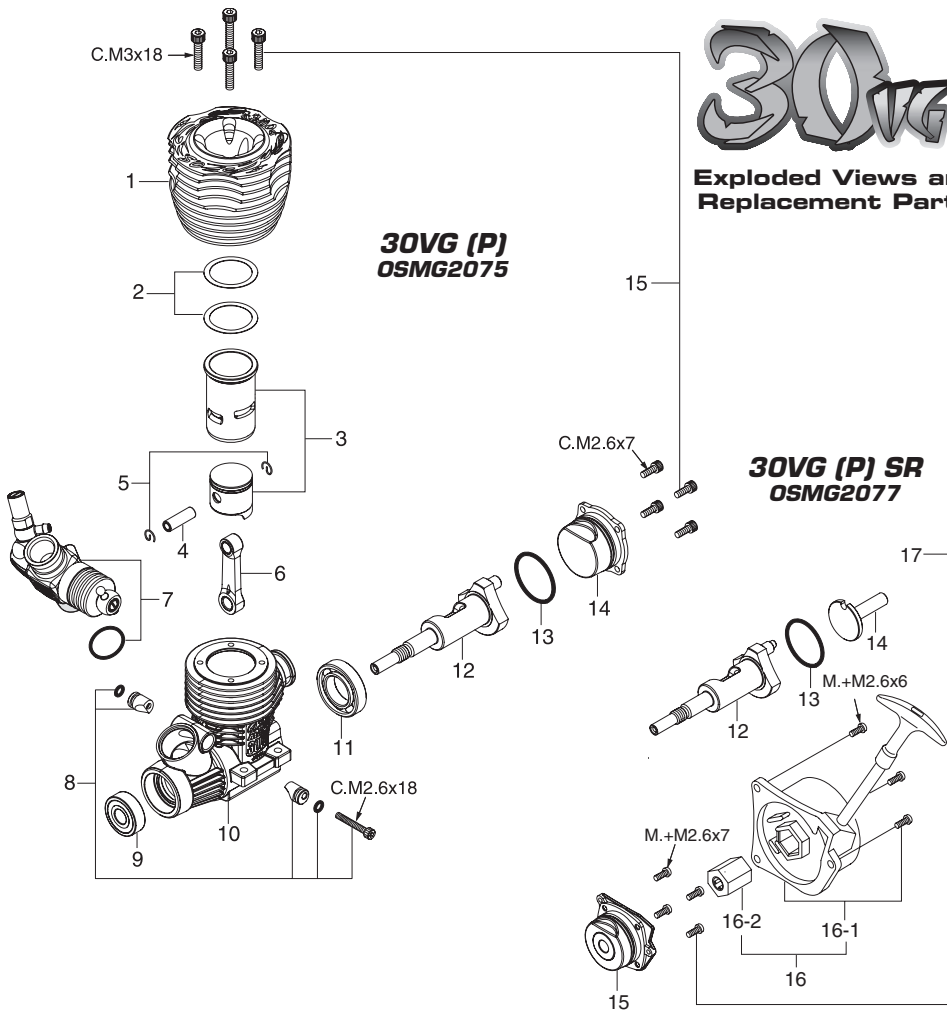
For more information on 30VG engines or the location of the hobby dealer nearest you, please visit www.osengines.com or call 1-800-682-8948 and mention code number 99Y32.

Displacement: 0.298 cu in (5 cc) • Bore: 0.728 in (17.5 mm) • Stroke: 0.7165 in (18.2 mm) • Practical RPM: 4,000-36,000 • Output: 3.0 hp @ 28,000 rpm
All include: #8 glow plug, 203 air filter • All require: manifold, tuned pipe and glow fuel • Weight (w/o muffler): OSMG2075 30VG (P): 12.7 oz (360 g);
OSMG2076 30VG (P) SR Savage: 14.1 oz (399 g); OSMG2077 30VG (P)-X: 14.4 oz (408 g)

Roto Start™ and Savage™ are trademarks of HPI Racing®.



Exploded Views and Replacement Parts



PARTS FOR ALL ENGINES

Number	Description	Stock #
1.	Heatsink Head	OSMG5021
2.	Head Gasket	OSMG6267
3.	Cylinder & Piston Assembly	OSMG4859
4.	Piston Pin	OSMG7665
5.	Piston Pin Retainer (2 pc.)	OSMG7678
6.	Connecting Rod	OSMG3925
7.	Carburetor Complete (Type 21E)	OSMG2456
8.	Carburetor Retainer Assembly	OSMG3643
9.	Crankshaft Ball Bearing (Front)	OSMG3042
10.	Crankcase	OSMG4260
11.	Crankshaft Ball Bearing (Rear)	OSMG3079

INCLUDED BUT NOT SHOWN

Description	Stock #
Glow Plug #8	OSMG2691
Super Air Cleaner w/2 Foam Elements	OSMG2360
203 Filter Elements (4 pc.)	OSMG2393

FOR 30VG (P) ONLY

Number	Description	Stock #
12.	Crankshaft	OSMG4508
13.	Cover Gasket	OSMG6200
14.	Cover Plate	OSMG4089
15.	Screw Set	OSMG8673

FOR 30VG (P)-X ONLY

Number	Description	Stock #
12.	Crankshaft	OSMG4509
13.	Cover Gasket	OSMG6200
14.	Starting Shaft	OSMG8964
15.	Rear Adapter	OSMG8990
16.	N3 Recoil Starter Assembly	OSMG8975
16-1.	N3 Recoil Starter Body	OSMG8987
16-2.	One-Way Clutch	OSMG7359
17.	Screw Set	OSMG8685

FOR 30VG (P) SR ONLY

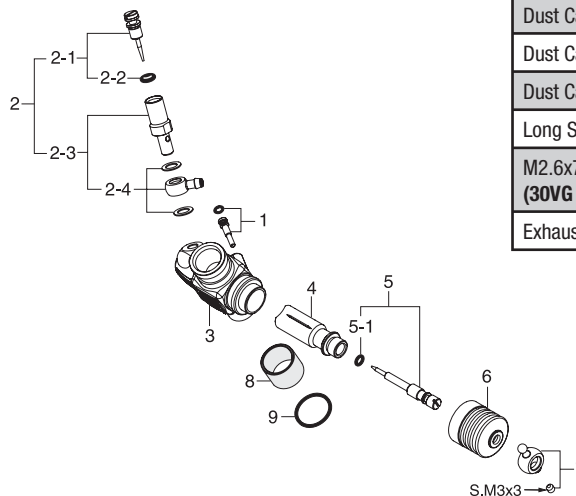
Number	Description	Stock #
12.	Crankshaft	OSMG4509
13.	Cover Gasket	OSMG6200
14.	Starting Shaft (for Roto Start)	OSMG8693
15.	Rear Adapter (for Roto Start)	OSMG8990
16.	Screw Set	OSMG8689



All 30VG™ engines are warranted for two years.

TYPE 21E CARBURETOR KEY (FOR ALL ENGINES)

Number	Description	Stock #
1.	Mixture Control Screw	OSMG6445
1-1.	O-Ring Small (2 pc.)	OSMG7392
2.	Needle Valve Assembly	OSMG7187
2-1.	Needle Assembly	OSMG7014
2-2.	O-Ring (2 pc.)	OSMG7380
2-3.	Needle Holder Assembly	OSMG7115
2-4.	Fuel Inlet	OSMG6002
4.	Slide Valve	OSMG8905
5.	Metering Needle Assembly	OSMG7297
6.	Dust Cover	OSMG5646
7.	Ball Link #3	OSMG9067
8.	Thermo Insulator	OSMG6249
9.	Carburetor Rubber Gasket	OSMG6228



OPTION PARTS

Description	Stock #
Dust Cap Set #3 (5 pc.)	OSMG5874
Dust Cap Set #8 (3 pc.)	OSMG5878
Dust Cap Set #16 (3 pc.)	OSMG5886
Dust Cap Set #18 (3 pc.)	OSMG5888
Long Socket Wrench w/Plug Grip	OSMR2976
M2.6x7 Cap Screw Set (10 pc.) (30VG (P) only)	OSMG8835
Exhaust Seal Ring (30VG (P) SR only)	OSMG5673

O.S. ENGINES
www.osengines.com