

EXTRA 330S

E PERFORMANCE SERIES[™]

ELECTRIC-POWERED SPORT-SCALE 3D AEROBAT



Another E-Performance star from ElectriFly!

**ALL THE PERFORMANCE A PILOT
COULD ASK FOR — AND MORE!**

EXPERTLY COVERED WITH

**TOP FLITE
MONOKOTE**

HIGH-QUALITY

**PRECISION
HARDWARE
INCLUDED**

Performance equals fun — and the Extra 330S EP ARF offers plenty of both! What's more, performance can be tailored to the pilot's preference with different brushless motors. Drop in an in-runner and a gear drive, and it's an easy way to enjoy everything from simple flying to spirited aerobatics. Opt for an out-runner, and it's a 3D thriller, ready for an afternoon of torque rolls, waterfalls, and harriers. And best of all, pilots can have the performance they want after just 6-8 hours of simple, straightforward assembly!

- *Great for the flying field, or for small fields and spur-of-the-moment flying sessions. Flies like a big plane, but fits easily in the back seat!*
- *Offers a kit-quality look at the air show classic — and brushless performance with out-runner or in-runner motors!*
- *Capable of everything from high-alpha 3D stunts to low-stress sport flying. Stable and predictable at high speeds, low speeds and everything in-between.*
- *Short, straight linkages enhance fast, strong response. Exterior mounts for aileron, elevator and rudder servos simplify installation and speed adjustments.*



Assembly is as easy as 1-2-3. The cowl, landing gear and wheel pants are painted to match the MonoKote covering on prebuilt wood sections. Hardware is included and designed to bring out the best in E-Performance planes!



The Extra 330S is designed to provide the best in brushless power, whether that's a RimFire™ out-runner motor or Ammo™ in-runner motor and gear drive. Parts for mounting both included.

For more information on the ElectriFly Extra 300S 3D EP ARF or the location of the dealer nearest you, please visit www.electrifly.com or call 1-800-682-8948 and mention code number 99F36.

GPMA1543 • WINGSPAN: 41 in (1035 mm) • WING AREA: 337 in² (21.8 dm²)
WEIGHT: 27-31 oz (765-880 g) • **WING LOADING:** 11.5-13.2 oz/ft² (35-40 g/dm²)
LENGTH: 40 in (1015 mm) • **REQUIRES:** 4+ channel radio w/4 micro servos, 1250kV out-runner brushless motor* (or 3790kV in-runner brushless motor* and 24 mm gear drive*), 35A brushless ESC*, 11.1V 1250-2100mAh LiPo battery* & prop.

* See other side for recommended products

3
INTERMEDIATE
SKILL LEVEL

6-8
HOURS
ASSEMBLY

4+
CHANNEL

OUT-RUNNER

AMMO
IN-RUNNER



The fiberglass cowl, formed aluminum gear and wheel pants have two things in common: they're painted to complement the MonoKote® trim scheme and they're ideal for authentic looks with maximum ease.



Exterior-mounted servos in the wings and tail offer the best of both worlds: faster, stronger response and easier installation, set-up and adjustment!

Perfect choices for the E-Performance™ Extra 330S ARF!

SILVER SERIES™

**SS-35
Brushless ESC**

The SS-35 arrives with Deans® battery, universal radio and gold-plated motor bullet plugs installed, for immediate plug-n-play fun! Ideal with NiCd, NiMH and LiPo cells, detects pack voltage at hook-up and sets the auto cut-off automatically. Throttle response is incredibly smooth and virtually instantaneous, and brake can be turned on or off. A hefty 5V/2A BEC provides plentiful power for digital servos or extra servos. Weight 1.13 oz. (32 g). **GPM1830**



RIMFIRE™

35-30-1250 Out-Runner Brushless Motor

Ideal for 3D!

Economical and easy to install, this RimFire motor excels without a gear drive. That means less cost, complication and weight and more power for performance. And, since its lightweight aluminum can cools so well, it can deliver more power than comparable out-runners. Mount, hardware and prop adapter included. **GPM4595**



AMMO™

24-45-3790

In-Runner Brushless Motor & Gear Drive

Unmatched for efficiency, the Ammo 24-45-3790 In-Runner is adaptable to direct-drive applications, but excels with a gear drive. It's also a direct, drop-in fit for the motor mount and adapter included in the **Ammo 24 mm Gear Drive**. Designed for durability, the gear drive features an aluminum frame, dual ball bearing-supported steel shafts, brass pinion and nylon spur gears. The included 11T and 16T pinion gears combine with 40T and 50T spur gears for a total of 4 performance-tuning gear ratios.

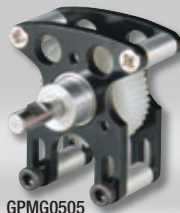
GPM5185 Ammo 24-45-3790 In-Runner Motor
GPM0505 Ammo 24 mm Gear Drive



GPM5185



The pick for sport flying!



GPM0505

ElectriFly™
by Great Planes

Balanced LiPo Battery Packs

Lighter than NiCds or NiMHs, ElectriFly LiPo packs are also wired for balancing, which allows each cell to reach full capacity and achieve its full voltage potential of 4.2V! And with the extra power, they offer higher discharge rates — the keys

to unleashing the power for instant, full-power acceleration and spectacular 3D stunts. All include balancing connector and Deans® Ultra™ Plug. Equinox™ LiPo Cell Balancer and LiPo charger or balancing LiPo charger required.

GPM0609 LiPo 11.1V PS 1250 20C Balance
GPM0613 LiPo 11.1V PS 1500 20C Balance
GPM0721 LiPo 11.1V BP 2100 15C Balance



GPM0609

Look for these other fine E-Performance airplanes at your local hobby shop!

YAK 54 3D ARF



GPMA1542

REACTOR™ 3D ARF



GPMA1540