

A sleek aerobat with hybrid versatility!

Revolver[™]

ALMOST READY-TO-FLY .46-.70/EP SPORT AEROBAT

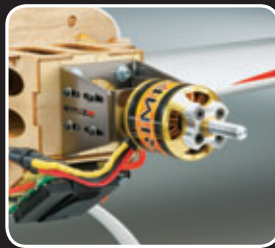


The Revolver's contemporary styling makes it a real standout on the flight line. Once it's airborne, it really takes center stage — and that's regardless of whether it's equipped with a glow engine or brushless motor! Get ready to fire off one crowd-pleasing maneuver after another with the Revolver — it's the "sports car" of sport aerobats!

- Select balsa and ply are used for the fuselage and tail section; the 2-piece, plug-in wing features a wire cut foam core that is balsa-sheeted.
- Airfoil-shaped tail surfaces allow the plane to lock in and track solidly.
- Comes with a complete package of quality Great Planes hardware.

"With its racy, streamlined appearance, the Revolver looks fast even when standing still! Its performance matches its profile — regardless of whether you equip it with a glow engine or brushless electric motor."

Don Anderson
Don Anderson
President and Founder
Great Planes Model Manufacturing



The bolt pattern on the firewall lines up exactly for either a .46-.70 glow engine mount or a motor mount for installing a brushless out-runner motor.



Only about 10 hours of final assembly are required before your Revolver is flight-ready. Quality Top Flite MonoKote film has already been applied.

WINGSPAN: 59 in (1500 mm) • WING AREA: 563 in² (36 dm²) • RTF WEIGHT: 6-7 lb (2720-3180 g) • WING LOADING: 25-29 oz/ft² (76-88 g/dm²) • LENGTH: 48 in (1220 mm) • REQUIRES: 4+ channel radio w/5 servos (50 oz-in min. torque) • ELECTRIC MOTOR REQUIREMENTS: 800kV brushless out-runner motor, 80A brushless ESC, (2) 3200mAh 11.1V 20C LiPo packs, 11 x 5.5E prop, large aluminum motor mount
GLOW ENGINE REQUIREMENTS: 2-stroke .46-.55 cu in (7.5-9.0 cc) or 4-stroke .70 cu in (11.5 cc) engine

For more information or the location of the dealer nearest you, visit www.greatplanes.com or call 1-800-682-8948 and mention code number 99P36.

www.greatplanes.com

Revolver[™]

ALMOST READY-TO-FLY .46-.70/EP SPORT AEROBAT

Recommended Revolver accessories

Futaba[®]

6EXA 2.4GHz FASST System Radio



Fly without fear of signal conflict or the need for a frequency pin! The cutting-edge technology found in the 6EXA 2.4GHz FASST system makes interference virtually impossible, while also locking in the best reception for the most precise performance imaginable. Plus, the R606FS receiver is small enough to mount in park flyers — but is powerful enough to easily control electric, gasoline-powered and giant-scale planes as well as helis! FUTK6900

POWER SERIES

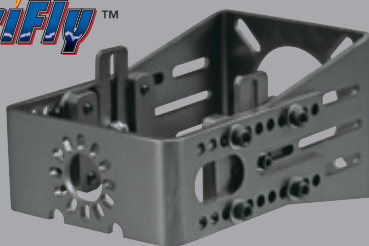
11.1V 3200mAh 20C LiPo Battery



Huge, 20C continuous discharge rate helps packs stay cooler during sustained, high-amp current loads. GPMP0623

ElectriFly[™]

Large Brushless Motor Mount



Made of strong, lightweight aluminum with hex-head hardware for easy installation and adjustment. Ideal for 42mm and 50mm RimFire motors. GPMG1260

D.S. ENGINES

55AX 2-Stroke Engine



Mounts in the same space as a .46 — while boosting power by 15%! OSMG0556

D.S. ENGINES

FS-70 Surpass 4-Stroke Engine



Delivers impressive performance, along with lower, more realistic sound. OSMG0872

ElectriFly[™]

RimFire[™] Out-runner Brushless Motor



Offers exceptionally high power-to-weight ratio, with a maximum rated efficiency of 89%. GPMG4725 Requires ElectriFly Large Motor Mount (GPMG1260), sold separately.



The cowl, wheel pants and landing gear are made of beautiful, lightweight fiberglass, and pre-painted to match the trim scheme.



Not only does the clear canopy come installed, it also has a great-looking frame painted on it. You also get a realistic-looking pilot figure.



On-board radio gear is quickly accessed through this hatch. It also makes it easy to change LiPo battery packs when equipped with an ElectriFly brushless power system.



Short and direct aileron linkages deliver strong, accurate control during high- and low-speed flight.