

# RV-4

## EP PARK FLYER KIT

**Fly a lightweight replica of  
the homebuilt "hot rod!"**



The RV-4 name is used with permission of Van's Aircraft Company.

Now, one of the most popular homebuilts of all time is available for the fastest-growing segment of R/C today: park flyers. Ideal for intermediates and experienced sport fliers, the RV-4 blends the construction pluses and building ease of Great Planes kits with the ability to grab a few minutes of flying fun almost anywhere. Simple to build and easy on the eye, the RV-4 is a Sunday flier that can be enjoyed any day of the week!

- A great project for builders with a few kits worth of experience and a couple of weekends.
- Interlocking, all-wood parts automatically strengthen and align structures — laser-cut formers and ribs included for fast, no-sand fits.
- A semi-symmetrical wing supports stable, predictable handling at cruising speeds and spirited aerobatics with full-span strip ailerons and a Selig S8036 airfoil.
- Light and compact, yet surprisingly generous with room for on-board gear.
- Includes concise manual and photo-illustrated instructions, plus a generous package of Great Planes®-brand hardware.

For more information on the RV-4 Park Flyer or the location of the dealer nearest you, please visit [www.electrifly.com](http://www.electrifly.com) or call 1-800-682-8948 and mention code number 99X27.



The vacuum-formed plastic cowl and wheel pants add scale detail without building work. Just apply paint and decals, and they're ready to install!

### Laser Cut Parts

With a S280-370 size motor and 7-cell NiCd battery, the RV-4 delivers smooth, stable flight. For even greater performance, use a 370 motor and lightweight, 3-cell Lithium-Polymer battery.



*"It's a first for Great Planes: a park flyer kit that's a replica of a full-size aircraft — in this case, the extremely popular RV-4. If you want an easy-to-build, fun-to-fly kit that's small enough and light enough for R/C thrills almost anywhere, what better choice than a sport/scale park flyer based on the homebuilt favorite?"*

*Don Anderson*

Don Anderson  
President and Founder  
Great Planes Model Manufacturing

[www.electrifly.com](http://www.electrifly.com)

**GPMA0010 • WINGSPAN:** 41.8 in (1060mm) • **WING AREA:** 368 sq in (23.7dm<sup>2</sup>) • **READY-TO-FLY WEIGHT:** 18.5-22 oz (525-625g) • **WING LOADING:** 7.3-8.6 oz/sq ft (22.3-26.2g/dm<sup>2</sup>) • **LENGTH:** 38.3 in (970mm) • **REQUIRES:** 4-channel radio w/3 micro servos, 280-370 motor, ESC w/BEC (10A min.), 4.1:1 gearbox, 7-8 cell NiCd or 3-cell Li-Po battery, charger, prop and adapter, spinner & 3 rolls CoverLite™ Coverite™

## Futaba®

### 4YF 4-Channel FM Radio



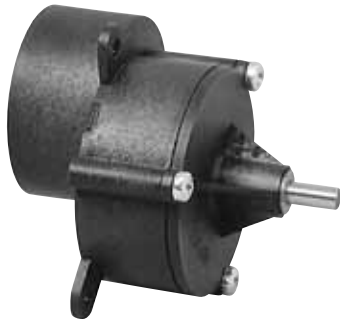
Now with  
**S3108 Micro  
 Servos!**



Cost makes this a great start-up or sport system — two S3108 micro servos make the 4YF FM a natural choice for the RV-4. A generous handful of features makes it a great value; an attractive, slim-line case makes it a comfortable handful to hold. In addition to servo reversing, full NiCds and trims, the 4YF also includes a trainer system for shortening the learning curve. It's controlled by a toggle switch that's easier to hold "on" and spring-loaded to instantly turn "off" when released. Includes an R114F dual-conversion receiver, charger, battery LEDs, sticks with length and tension adjustments and two 0.27 oz. S3108 micro servos. **S3108 Micro Servo (FUTM0042)** also available separately.

## ElectriFly™

### 4.1:1 Gearboxes



The nylon gear and brass pinion in ElectriFly gearboxes maximize mesh, while minimizing noise and maintenance. A sealed, fiber-reinforced nylon case provides protection from impacts, dust and grit. Available with bushings for sport use and ball bearings for competition.

**Prop Adaptor** (available separately) required for use with Slo-Flyer props.

- GPMG0202 Gearbox S280 4.1:1 Std
- GPMG0210 Gearbox S280 4.1:1 BB
- GPMG4600 Prop Adaptor 3MM Shaft

## ElectriFly™

### T-370 Motor



Designed for 6-8 cells, counter-clockwise rotation and gearbox use, with a custom wind that delivers more *punch!* than most other 370s. Turns a 9x6 Slo-Flyer prop at 4600 rpm at 7.8A with 8.4V power! Lead w/2-pin connector and 2 capacitors are already installed. Can Diameter: 0.96 in (24.4mm)

## ElectriFly™

### Peak 400 DC Peak Charger



Dimensions:  
 3.8 x 2.3 x 1 in  
 (95 x 57 x 25mm)  
 Weight: 4.8 oz (139g)



Designed for DC power and at-field ease, the Peak 400 can charge a NiCd or NiMH cell or pack to peak and then keep it safely topped off with auto-trickle. Trickle rates are automatically set when the charge rate is chosen. Rates of 500mA, 1.2A and 2.5A make the Peak 400 a great choice for 1-10 cell, "AAA" through "2/3 sub-C cell" packs, and a fast way to get charged up and back in the air. LEDs glow to show power status and charge method in use and flash to alert user to excessive voltage or reverse polarity on input, short circuit or open circuit. Fuse-protected against overload. Includes input cord w/alligator clip and output cord w/standard connector and 2-pin adaptor.

## ElectriFly™

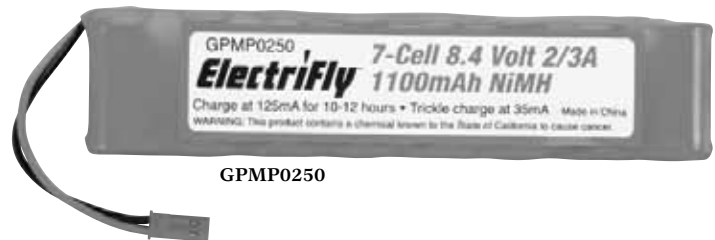
### C-10 Electronic Speed Control

Dimensions: 0.83 x 0.45 x 0.26 in (21 x 11.5 x 6.5mm)  
 Weight: 0.27 oz (8g)



The C-10's 3.0kHz switching rate that ensures smooth proportional control also enhances cool operation. The SMT components that maximize its vibration-resistance and dependability also minimize its size and weight. And, as light and tiny as it is, it's loaded down with a wide range of useful features. The ability to handle 6.0-9.6V power and motors up to 400-size. Another is the ability to deliver up to 12A of current — more than enough to handle a micro receiver and three micro servos. It also includes Safe Start software, an auto cut-off, 5V/1A BEC, factory-installed capacitors and connectors, thermal shutdown and reverse polarity protection and a 180-day warranty.

## ElectriFly™ NiMH Battery Packs



GPMP0250

Each pack offers the no-cycle (and no-recycle) convenience of NiMH chemistry and another power/capacity choice. Available in 7- and high-voltage 8-cell configurations. All packs are assembled, shrink-wrapped and equipped with a lead and 2-pin connector.

- GPMP0071 7C, 8.4V 2/3AA 650mAh NiMH Pack
- GPMP0072 8C, 9.6V 2/3AA 650mAh NiMH Pack
- GPMP0250 7C, 8.4V 2/3A 1100mAh NiMH Pack
- GPMP0251 8C, 9.6V 2/3A 1100mAh NiMH Pack

Distributed Exclusively Through,  
 GREAT PLANES MODEL DISTRIBUTORS COMPANY  
 P.O. BOX 9021, Champaign, IL 61821-9021