

OVERDRIVE ST



JUMP RIGHT INTO EXCITING OFF-ROAD ACTION!

The Overdrive ST goes beyond being preassembled...beyond being pre-painted...and beyond a pre-installed engine and radio. The standard equipment found on this truck far exceeds that of other comparable entry-level models - and two forward AND two reverse speeds are just the beginning of its performance features. Looking for "over-the-top" R/C adventure that's under your price expectations? Look no further than the Overdrive ST!



- 3-channel pistol grip radio system - installed!
- Nitro Starter Pack - included!
- Velocity™ .17 engine - installed!
- FREE start-up video - included!
- Customized multi-colored body!
- 12 "AA" batteries - included!



ADORNED WITH "A-LIST" EQUIPMENT!



VELOCITY 17
At .17 cubic inches, the Velocity .17 is larger - and therefore more powerful - than most entry-level nitro truck engines. Plus, it also boasts true ABC construction, the popular 2-needle carb configuration, an oversized black cylinder head for better cooling, and an easy-operating, heavy-duty recoil starter.



FREE Velocity™ .17 start-up video
Includes step-by-step instructions for starting, operating and maintaining your Velocity .17 engine to keep it in peak running condition.



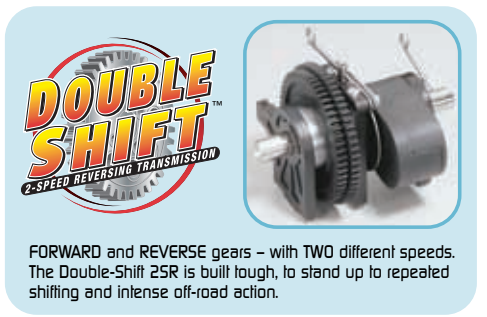
Nitro Starter Pack!
Contains a 250cc fuel bottle, glow starter and "C"-size alkaline battery - handy accessories for getting into the action immediately. Just add fuel!

DURATRAX by Futaba. 3-Channel Radio System



The most respected name in R/C electronics, Futaba has designed this pistol-grip system specifically for the Overdrive ST. The transmitter is comfortable to hold, and the radio's quality features include:

- A third channel for forward/reverse shifting
- Fine trims for throttle and steering
- LED monitor
- Three SX 100 standard servos
- Removable antenna
- Recharging jack (for use with optional NiCd batteries)
- 12 "AA" batteries for the transmitter and receiver



DOUBLE SHIFT™
2-SPEED REVERSING TRANSMISSION

FORWARD and REVERSE gears - with TWO different speeds. The Double-Shift 2SR is built tough, to stand up to repeated shifting and intense off-road action.



A sturdy and stylish body
Made of rugged, lightweight polycarbonate, the Overdrive ST's body is professionally cut, trimmed and painted. Each of the six sizzling, multi-colored trim schemes is tied to a specific radio frequency.



OVERDRIVE ST

For more information, and the location of the Duratrax dealer nearest you, call 1-800-682-8948 and mention code 99L19 or visit our web site at: www.duratrax.com

DURATRAX OVERDRIVE ST™

1:10 SCALE 4WD READY-TO-RUN R/C NITRO STADIUM TRUCK

READY TO ATTACK THE TRACK WITH STRENGTH AND SPEED!



Velocity™ .17 Engine – bigger and more powerful than typical entry-level nitro truck engines.



Double Shift™ Transmission – Provides 2-speeds in forward and reverse.

Max-Sized™ Fuel Tank – Holds 100cc of nitro fuel for long run times, with a flip-top cap for rapid refills.

Rapid-Tune™ Oil-Filled Shocks – Coil-over shocks with easy-adjusting spring tension, plus blue-anodized aluminum shock bodies and caps.

Metal Disk Brake – reliable, responsive and heavy-duty for “on-a-dime” stopping power.



COMPLETE Ball Bearings –

20 in all – and better than bushings for fighting friction, reducing wear and increasing top speeds.

Tuned Pipe/Manifold included with the Overdrive ST, and designed to further improve performance.

Rigi-Frame™ 6061 T-6 Aluminum Chassis extra-durable (3mm thick), extra light, and blue-anodized for sharp looks.

Rapid-Tune™ Turnbuckles – Made of metal, with a hex-center design – and found on all tie rods and camber rods.

Special Truck Tires & Chrome Wheels –

Spiked 2.2” stadium truck tires with foam inserts supply traction for high speeds and easy handling – and they’re mounted and glued to gleaming chromed wheels that add pizzazz.

CV Drive Shafts – Provide smooth, efficient power to the front wheels.

DTX092**
LENGTH: 18 in (460mm)
WIDTH: 12.2 in (310mm)
HEIGHT: 6.5 in (165mm)
WHEELBASE: 11.42 in (290mm)
FRONT/REAR TRACK: 9.94 in (255mm)
GROUND CLEARANCE: 1.38 in (35mm)
WEIGHT: 4 lb (1814g)
ENGINE: Velocity™ .17 ABC w/recoil starter (included)
RADIO: 3-channel pistol radio (included)
REQUIRES: 10% nitro fuel (DuraTrax® Red Alert™ is recommended)

REPLACEMENT PARTS

OVERDRIVE ST REPLACEMENT PARTS

DTXC1091 BALL BEARING SET (20)
DTXC6110 AIR FILTER SET
DTXC6111 AIR FILTER ELEMENTS (3)
DTXC6200 BALL END (R) (1)
DTXC6271 BALL END LARGE (4)
DTXC6272 BALL END LG W/ BALLS (2)
DTXC6300 BEVEL GEARS
DTXC6470 CUSTOM GRAPHIC BODY GRN/BLU
DTXC6471 CUSTOM GRAPHIC BODY BLU/RED
DTXC6472 CUSTOM GRAPHIC BODY RED/BLU
DTXC6473 CUSTOM GRAPHIC BODY YEL/RED
DTXC6474 CUSTOM GRAPHIC BODY SLV/PRP
DTXC6475 CUSTOM GRAPHIC BODY PRP/YEL
DTXC6476 BODY CLEAR
DTXC6453 BODY MOUNT SET
DTXC6707 BRAKE CAM
DTXC6713 BRAKE DISK
DTXC6752 BRAKE SHOE (2)
DTXC6851 BUMPER FRONT
DTXC6858 BUMPER REAR
DTXC7007 CHASSIS BLUE 6061
DTXC7021 CHASSIS UPPER BLUE 6061
DTXC7115 CLUTCH TWO SPEED
DTXC7118 CLUTCH DRUM 2SPEED
DTXC7136 CLUTCH BELL W/O GEARS
DTXC7150 CLUTCH SHOE W/ SPRING (2)
DTXC7160 CLUTCH SHOE SPRING
DTXC7185 CLUTCH GEAR 1ST TWO SPEED
DTXC7189 CLUTCH GEAR 1ST TWO SPEED
DTXC7230 COUNTER GEAR DOUBLE SHIFT
DTXC7231 COUNTER GEAR SHAFT DOUBLE SHFT
DTXC7281 CV SHAFT (2)
DTXC7303 DECAL SHEET
DTXC7361 DIFFERENTIAL CASE
DTXC7382 DIFF PINION GEAR
DTXC7392 DIFF RING GEAR
DTXC7456 DOGBONE CENTER FR (1)
DTXC7505 DRIVE GEAR DOUBLE SHIFT
DTXC7507 DRIVE GEAR TUBE DOUBLE SHIFT
DTXC7530 DRIVE SHAFT DOUBLE SHIFT
DTXC7550 DRIVE WASHER (4)
DTXC7600 ENGINE MOUNT SET
DTXC7650 ENGINE CLUTCH NUT
DTXC7663 FOAM INSERTS (2)
DTXC7700 FLYWHEEL W/ INSTALLED COLLET
DTXC7801 FUEL TANK 100CC
DTXC7891 GEARBOX MOUNT
DTXC7897 GEARBOX BULKHEAD SET
DTXC7905 GEAR CASE DOUBLE SHFT
DTXC7975 GEAR MOUNT W/ ONE WAY 2SPD

DTXC8009 HUB REAR (2)
DTXC8040 HUB CARRIER FRONT (2)
DTXC8085 IDLER GEAR DOUBLE SHIFT
DTXC8086 IDLER GEAR SHAFT DOUBLE SHIFT
DTXC8100 JOINT (2)
DTXC8103 JOINT 15MM (2)
DTXC8104 JOINT 17MM (2)
DTXC8105 JOINT 15.4MM (2)
DTXC8201 KING PIN (4)
DTXC8232 LINKAGE SET
DTXC8256 MANIFOLD W/ GASKET & CPLR
DTXC8306 PIVOT BALL
DTXC8317 PIPE MOUNT
DTXC8392 RADIO BOX
DTXC8500 ROD / LINKAGE SET
DTXC8610 SCREW PIN 23MM (4)
DTXC8615 SCREW PIN 19MM (4)
DTXC8680 SCREW 3X10MM FILUSTR (10)
DTXC8700 SCREW SET
DTXC8801 SERVO MOUNT SET
DTXC8851 SERVO SAVER PLATE SET
DTXC8855 SERVO SAVER ARM SET
DTXC8902 WHEEL SHAFT (2)
DTXC8950 SHIFTING GEAR DOUBLE SHIFT
DTXC8951 SHIFT GEAR FORK DOUBLE SHFT
DTXC8960 SHIFT LEVER DOUBLE SHFT
DTXC9062 SHOCK SEAL SET
DTXC9100 SHOCK BUSHING (4)
DTXC9119 SHOCK SPRING YELLOW (2)
DTXC9136 SHOCK SHAFT SET
DTXC9154 SHOCK BODY & CAP (2)
DTXC9192 SHOCK TOWER
DTXC9224 SHOCK SET ASSM (2)
DTXC9407 SPUR GEAR 56T TWO SPEED
DTXC9408 SPUR GEAR 60T TWO SPEED
DTXC9480 STEERING ROD NYLON & BALL
DTXC9554 SUSPENSION ARM (2)
DTXC9560 SUSPENSION ARM MOUNT (2)
DTXC9601 DOGBONE 85.5MM (REAR DOGBONE)
DTXC9651 TIE ROD SET W/ ENDS
DTXC9662 DOGBONE 65MM (CENTER TO REAR)
DTXC9690 THROTTLE ROD SPRING (2)
DTXC9719 TIRE SPIKED (2)
DTXC9726 TUNED PIPE SET
DTXC9739 TUNED PIPE
DTXC9753 TURNBUCKLE UPPER (2)
DTXC9761 UPPER PLATE POST W/ SCRW
DTXC9762 UPPER ARM NYLON PARTS
DTXC9876 WHEELS CHROME (2)
DTXC9877 CHROME WHEELS (2)
DTXC9950 WHEEL HUB FRONT (2)
DTXC9609 MUFFLER GASKET (2)

VELOCITY 17 REPLACEMENT PARTS

DTXG0352 BEARING FRONT
DTXG0362 BEARING REAR
DTXG0380 CARB BARREL
DTXG0401 CARB BOOT / DUST COVER
DTXG0402 CARB BOOT - SLIDE CARB
DTXG0411 CARBURETOR BODY
DTXG0412 CARB BODY - SLIDE CARB
DTXG0415 CARB BARREL SPRING
DTXG0441 CARBURETOR COMPLETE
DTXG0442 CARBURETOR SLIDE VALVE
DTXG0460 CRB RTNR W/ NUT TRQ (2)
DTXG0465 CARB SETTING PIN - SLID
DTXG0468 CARBURETOR O-RING (2)
DTXG0472 CONNECTING ROD
DTXG0486 COVERPLATE FOR RECOIL
DTXG0497 COVERPLATE STD
DTXG0502 COVERPLATE GASKET
DTXG0511 CVRPT SCRW (4) TORQ (2)
DTXG0523 CRANKCASE
DTXG0525 CRANKSHAFT
DTXG0554 CYLINDER PISTON SET
DTXG0557 FUEL INLET NOZZLE
DTXG0562 DRIVE WASHER
DTXG0566 DRV WISHR COLLET
DTXG0573 HEAD BUTTON
DTXG0586 HEATSINK HEAD BLACK
DTXG0587 HEATSINK HEAD PURPLE
DTXG0592 HEATSINK HEAD GASKET
DTXG0602 HEAD SCREWS (4)
DTXG0603 IDLE NEEDLE - SLIDE CRB
DTXG0604 IDLE NEEDLE
DTXG0607 O-RING IDL NDL (2)
DTXG0617 NEEDLE SOCKET
DTXG0622 NEEDLE VALVE
DTXG0630 NEEDLE O-RING
DTXG0635 ONE WAY BEARING
DTXG0642 PISTON PIN
DTXG0655 PISTON PIN RETAINERS (2)
DTXG0752 RECOIL STARTER
DTXG0759 SLIDE VALVE - SLIDE CRB
DTXG0762 START SHAFT
DTXG0775 START SHAFT PIN
DTXG0782 START SHAFT SPRING
DTXG0802 THROTTLE ARM
DTXG0803 THROTTLE ARM SLIDE CARB
DTXG0811 THROTTLE STOP SCREW
DTXG0812 THROTTLE STOP SCREW CRB

*STRESS-TECH™ PARTS IN BOLD

FREE REPLACEMENT GUARANTEE

DuraTrax is so confident in the quality and durability of Stress-Tech plastic parts that we'll replace any Stress-Tech part that breaks during the first 12 months you own the Overdrive ST RTR. Just send the broken part to DuraTrax and we will send you a free replacement. See the instruction manual for mailing address and details.

PROTECTED BY A
**STRESS-TECH
GUARANTEE** 1 YEAR

THESE ARE “MUST-HAVE” ACCESSORIES FROM DURATRAX FOR THE OVERDRIVE ST OWNER!

FIELD BAGS

Heavy-duty nylon, stitched handles and reinforced interiors make these bags rugged – massive size and side pockets make it easy to haul all your R/C stuff at once. Both include zippered tops for security, and shoulder straps for carrying ease. The Extra-Large is 22.8” x 13” x 11”; the Deluxe is 27” x 14” x 12.5”, and features zippered end pouches and a water-resistant bottom.

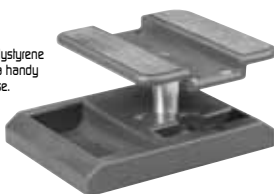
DTXP2000 X-Large Field Bag
DTXP2010 X-Large Deluxe Field Bag



PIT TECH™ DELUXE CAR STAND

A rotating top on this tough polystyrene stand enables it to double as a handy workbench or display showcase. Holes in the top and trays in the base keep shocks, tools and parts within easy reach. Assembles easily, and stores flat to save space.

DTXC2370



NICD CONVERSION KIT

Why buy disposable alkaline cells, when you can install Sanyo® NiCDs and use them hundreds of times? Recharging is simple: plug the charger into the wall, the plug into your radio – and you're done. Takes only 2-3 hours.

DTXP4010



RED ALERT™ 10% NITRO FUEL

Great for all-purpose on-road and off-road driving, Red Alert fuel increases your savings and your confidence: Provides maximum speed and rpm - and runs cooler.

DTXP0520 10% Red Alert Fuel-Quart
DTXP0571 10% Red Alert Fuel-Gallon

