

EVADER^{BX}

1:10 SCALE READY-TO-RUN R/C ELECTRIC RACING BUGGY



FOLLOW THE LEADER!

NOTHING CAN TOUCH IT FOR:

EASY SETUP

■ NO BUILDING — NO PAINTING. FACTORY-ASSEMBLED AND READY FOR ACTION IN MINUTES.

EXTRAS

■ PERFORMANCE EXTRAS. HOP-UPS AND ADD-ONS ARE BUILT-IN, SO YOU CAN TAKE YOUR EVADER TO RACES, CLUB EVENTS...AND BEYOND!

TOUGHNESS

■ GUARANTEED. SO DURABLE, IT'S PROTECTED BY A 1-YEAR STRESS-TECH™ FREE REPLACEMENT PARTS GUARANTEE!

INCLUDES	REQUIRES
<ul style="list-style-type: none"> ■ 2-CHANNEL PISTOL-GRIP RADIO SYSTEM — INSTALLED! ■ SPRINT™ ELECTRONIC SPEED CONTROL W/REVERSE ■ PHOTON SPEED™ 20-TURN MODIFIED MOTOR ■ CUSTOMIZED, MULTI-COLOR BODY ■ "AA" BATTERIES ■ QUICK START-UP VIDEO 	<p>BATTERY AND CHARGER</p>



PROTECTED BY A
STRESS-TECH™
GUARANTEE **1**
YEAR

DURATRAX
THE LEADER IN AWESOME RIC™

EVADER^{BX}

EVADER^{BX}

QUALITY FEATURES

CUSTOM MULTI-COLOR BODY

Made of tough, rip-resistant polycarbonate, the Evader BX body arrives cut, trimmed and painted. RTR models offer a choice of six bold color schemes, each keyed to a different radio frequency. An adjustable racing wing lets you change the downforce to suit your particular track.



DURATRAX® 2-CHANNEL PISTOL-GRIP RADIO

Light and comfortable to hold, the RTR's included radio comes equipped with trims, adjustable steering rate, battery LED, an SX100 servo, BEC receiver, removable antenna — even a charge jack for (optional) NiCd battery use. On-board components come factory-installed on the chassis.

- Adjustable Steering Travel
- Servo reversing
- Steering and throttle trims
- SX-100 Servo
- Recharging jack (for use with optional NiCd batteries)
- LED battery status light
- Removable Antenna

INCLUDES 8 "AA" BATTERIES



20-TURN PHOTON SPEED™ MODIFIED MOTOR

Outperforms "stock" motors with explosive acceleration at the starting line and more top-end speed to carry you to the finish. An open endbell design makes it easy to clean the commutator and replace brushes and springs to keep your motor performing at its peak.



FACTORY-ASSEMBLED CHASSIS

The hard work of assembly is already done — the Evader BX RTR is ready for racing! Learn more about it inside.



BATTERY SHOWN NOT INCLUDED

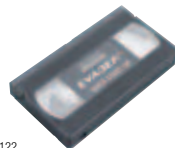
SPRINT™ ELECTRONIC SPEED CONTROL

Rare in RTRs, an Electronic Speed Control (ESC) is a huge plus in any R/C car or truck. Lighter and more reliable, the Evader BX RTR's Sprint ESC also replaces the jumpy response of inefficient mechanical controls with smooth acceleration, efficient operation, and improved control. Includes reverse, for added mobility and fun.



START-UP VIDEO

The included, free video's step-by-step instructions get you to the track fast. Includes hands-on maintenance and tuning tips.



Brochure No. DTX20064 Copyright 2002 — 3088121/122

www.duratrax.com

FOR THE LOCATION OF THE DEALER NEAREST YOU
CALL 1-800-682-8948 AND MENTION CODE NUMBER 0849J.



EVADER BX PREBUILT

Rather use your own radio system? No problem: The Evader BX Prebuilt has every advantage of the ready-to-run — the same factory-assembled ease, powerful Photon Speed™ motor, smooth Sprint™ ESC, and numerous option parts — but lowers the price and leaves the radio choice up to you.



DTXC0022

Requires: 2-channel radio with one servo, 6- or 7-cell battery & charger



EVADER[™] BX

1:10 SCALE READY-TO-RUN R/C ELECTRIC RACING BUGGY

ADJUSTABLE SLIPPER CLUTCH
Keeps wheel spin under control.



PHOTON SPEED[™] MODIFIED MOTOR

20-Turn, Single-Wind Motor — faster than stock. Includes replaceable brushes and springs.



MOTOR GUARD
Shields the Photon Speed[™] motor against rocks, dings and other vehicles.

Battery shown not included.

COMPOSITE RACING CHASSIS

A sunken, center-line tray lowers and spreads battery weight for more consistent handling and better control — a refinement usually found only on competition vehicles. Countersunk screws underneath prevent hang-ups on off-road obstacles.

STEEL UNIVERSAL DRIVES
More efficient than standard dogbones.



BEC RECEIVER

Installed and already connected to the radio and electronic speed control. BEC (Battery Eliminator Circuitry) does away with the need for — and weight of — on-board radio batteries.

QUICK START-UP INSTRUCTIONS
The shortcut around the instruction manual. Go from box to track in just a few short steps!

ADJUSTABLE BALL DIFFERENTIAL
Offers fine-tuned control of power delivery. Adjustable for different track conditions.



COMPLETE BALL BEARING SET (16)
No bushings here. Included to fight friction and increase top speeds.



SPRINT[™] ESC W/REVERSE

Speed control that's smoother, more reliable, and more efficient than mechanical controls.



RAPID-TUNE[™] ALUMINUM OIL SHOCKS

Strong, durable aluminum, oil-filled coil-over shocks with easily adjustable spring tension.

RACE-TUNABLE SUSPENSION

Adjustable — not fixed. As versatile as any racing set up and equipped with strong steel turnbuckles that adjust quickly with the included wrench.

SX100 SERVO
Strength for steering. Installed at the factory.

REPLACEMENT & OPTION PARTS

REPLACEMENT PARTS

- DTXC423 3/16" X 3/8" BEARINGS
- DTXC531 5XMM BEARINGS
- DTXC1535 5X10MM BEARINGS
- DTXC1581 8X12MM BEARINGS
- DTXC3300 PHOTON SPEED MOTOR
- DTXC1600 ANTENNA TUBE (5)
- DTXC6171 AXLE SET FRONT (2)
- DTXC6180 REAR AXLE WASHERS
- DTXC6181 BALL CUPS (14)
- DTXC6254 BALL STUDS LONG (4)
- DTXC6282 BATTERY SPACER SPONGE
- DTXC6290 BATTERY STRAP
- DTXC6393 BODY AND WING GREEN
- DTXC6394 BODY AND WING BLUE
- DTXC6395 BODY AND WING RED
- DTXC6396 BODY AND WING YELLOW
- DTXC6397 BODY AND WING CHARCOAL
- DTXC6398 BODY AND WING PURPLE
- DTXC6399 BODY AND WING UNPAINTED
- DTXC6442 BODY CLIPS (10)
- DTXC6611 FRONT CHASSIS BRACE
- DTXC6809 FRONT BULKHEAD
- DTXC6845 FRONT BUMPER
- DTXC7006 CHASSIS
- DTXC7015 REAR CHASSIS PLATE
- DTXC7293 DIFF RINGS (2)
- DTXC7313 DECAL SET
- DTXC7351 DIFF BALLS 3/32" (12)
- DTXC7372 DIFF OUTDRIVE LEFT
- DTXC7373 DIFF OUTDRIVE RIGHT
- DTXC7386 DIFF REBUILD KIT
- DTXC7402 DIFFERENTIAL GEAR
- DTXC7435 DIFFERENTIAL SPRING
- DTXC7440 THRUST BALLS 1/16" (6)
- DTXC7445 THRUST BEARING SET
- DTXC7476 UNIVERSAL DOGBONE AXLE (2)
- DTXC7630 E-CLIP 2MM (10)
- DTXC7631 E-CLIP 2.5MM (10)
- DTXC7665 FOAM TIRE INSERT SET (4)
- DTXC7870 GEAR COVER SET
- DTXC7890 GEARBOX SET
- DTXC8028 HINGE PIN SET
- DTXC8031 HUB CARRIER FRONT (2)
- DTXC8070 HUB REAR (2)
- DTXC8080 IDLER GEAR AND SHAFT
- DTXC8199 KING PIN SET (2)
- DTXC8223 KNUCKLE ARMS (2)
- DTXC8236 3/16" NYLON INSERT LOCKNUT
- DTXC8237 4-40 NYLON INSERT LOCKNUT
- DTXC8240 3MM NYLON INSERT LOCKNUT
- DTXC8261 MOTOR BRUSH SPRINGS (2)
- DTXC8262 MOTOR BRUSHES (2)
- DTXC8263 MOTOR CONNECTOR SET (2)
- DTXC8265 MOTOR GUARD
- DTXC8269 MOTOR PLATE
- DTXC8352 PINION GEAR 48P 23T
- DTXC8630 4-40 X 1/4" F/H SCREWS (10)
- DTXC8631 4-40 X 5/16" MACHINE SCREWS (10)

- DTXC8636 4-40 X 1/2" MACHINE SCREWS (10)
- DTXC8635 4-40 X 3/8" CAP SCREWS (10)
- DTXC8637 4-40 X 3/4" CAP SCREWS (10)
- DTXC8638 4-40 X 7/8" CAP SCREWS (10)
- DTXC8640 3 X 8MM CAP SCREWS (10)
- DTXC8644 3 X 25MM CAP SCREWS (10)
- DTXC8645 3 X 3 MM SCREWS (10)
- DTXC8650 3 X 6MM SCREWS (10)
- DTXC8660 3 X 5MM SET SCREWS (10)
- DTXC8670 3 X 3 MM SCREWS (10)
- DTXC8790 SERVO BRACE
- DTXC8884 SERVO SAVER SHAFT SET
- DTXC8892 SERVO SAVER SET
- DTXC9004 SHOCK SET REAR (2)
- DTXC9007 SHOCK SET FRONT (2)
- DTXC9030 SHOCK BUSHINGS (4)
- DTXC9056 SHOCK SEAL SET
- DTXC9061 SHOCK O-RINGS (8)
- DTXC9068 SHOCK PARTS SET
- DTXC9132 SHOCK SHAFT REAR (2)
- DTXC9133 SHOCK SHAFT FRONT (2)
- DTXC9161 SHOCK BODY FRONT (2)
- DTXC9201 SHOCK TOWER FRONT
- DTXC9202 SHOCK TOWER REAR
- DTXC9225 SHOCK BODY REAR (2)
- DTXC9238 SHOCK SPRING WHITE FRONT (2)
- DTXC9305 SLIPPER BUSHING
- DTXC9314 SLIPPER PLATE SET HARD ANODIZED
- DTXC9321 SLIPPER CLUTCH PADS
- DTXC9370 SPONGE WASHER SET (16)
- DTXC9380 SLIPPER SPRING
- DTXC9385 1.6 X 10MM PIN (10)
- DTXC9386 2 X 10MM PIN (10)
- DTXC9387 2.5 X 10MM PIN (10)
- DTXC9395 SPUR GEAR 48P 81T
- DTXC9460 STEERING SERVO MOUNT
- DTXC9546 SUSPENSION ARM SET FRONT
- DTXC9547 SUSPENSION ARM SET REAR
- DTXC9665 TOP SHAFT
- DTXC9667 TRANSMISSION BRACE
- DTXC9711 TIRE RIBBED FRONT (2)
- DTXC9712 TIRE SQUARE SPIKE REAR (2)
- DTXC9763 3 X 8 X 5MM WASHER (10)
- DTXC9764 3MM SPRING WASHERS (10)
- DTXC9771 WING MOUNT SET
- DTXC9827 TURNBUCKLE 44MM (2)
- DTXC9840 WHEEL FRONT WHITE (2)
- DTXC9841 REAR WHEEL WHITE (2)
- DTXC1071 INSTRUCTION MANUAL
- DTXC1072 EXPLODED VIEW / PARTS LIST

OPTION PARTS

- DTXC3000 78T 48P SPUR GEAR
- DTXC3005 81T 48P SPUR GEAR
- DTXC3010 86T 48P SPUR GEAR
- DTXC5182 BALL CUPS YELLOW (14)
- DTXC5183 BALL CUPS BLUE (14)
- DTXC5184 BALL CUPS GREEN (14)
- DTXC6291 BATTERY STRAP YELLOW
- DTXC6292 BATTERY STRAP BLUE

- DTXC6293 BATTERY STRAP GREEN
- DTXC6294 BATTERY STRAP ALUMINUM BLUE
- DTXC6295 BATTERY STRAP ALUMINUM PURPLE
- DTXC6613 HINGE PIN PLATE ALUMINUM BLUE
- DTXC6614 HINGE PIN PLATE ALUMINUM PURPLE
- DTXC6807 BULKHEAD ALUMINUM BLUE
- DTXC6808 BULKHEAD ALUMINUM PURPLE
- DTXC6846 FRONT BUMPER YELLOW
- DTXC6847 FRONT BUMPER BLUE
- DTXC6848 FRONT BUMPER GREEN
- DTXC7352 3/32" TUNGSTEN CARBIDE DIFF BALLS (12)
- DTXC7441 1/16" TUNGSTEN CARBIDE THRUST BALLS (6)
- DTXC7980 HEATSHIELD / MOTOR MOUNT ALUMINUM BLUE
- DTXC7981 HEATSHIELD / MOTOR MOUNT ALUMINUM PURPLE
- DTXC8029 HINGE PIN SET TITANIUM
- DTXC8032 ALUMINUM HUB CARRIERS BLUE (2)
- DTXC8033 ALUMINUM HUB CARRIERS PURPLE (2)
- DTXC8071 ALUMINUM REAR HUBS BLUE (2)
- DTXC8072 ALUMINUM REAR HUBS PURPLE (2)
- DTXC8206 TITANIUM KINGPIN (2)
- DTXC8224 ALUMINUM KNUCKLE ARM BLUE (2)
- DTXC8225 ALUMINUM KNUCKLE ARM PURPLE (2)
- DTXC8266 MOTOR GUARD YELLOW
- DTXC8267 MOTOR GUARD BLUE
- DTXC8268 MOTOR GUARD GREEN
- DTXC8350 PINION 20T 48P
- DTXC9031 SHOCK BUSHINGS YELLOW (4)
- DTXC9032 SHOCK BUSHINGS BLUE (4)
- DTXC9033 SHOCK BUSHINGS GREEN (4)
- DTXC9226 SHOCK SET REAR ALUMINUM BLUE (2)
- DTXC9227 SHOCK SET REAR ALUMINUM PURPLE (2)
- DTXC9228 SHOCK SET REAR HARD ANODIZED (2)
- DTXC9235 SHOCK SPRINGS REAR MEDIUM YELLOW (2)
- DTXC9236 SHOCK SPRINGS REAR HARD GREEN (2)
- DTXC9241 SHOCK SET FRONT ALUMINUM BLUE (2)
- DTXC9242 SHOCK SET FRONT ALUMINUM PURPLE (2)
- DTXC9243 SHOCK SET FRONT HARD ANODIZED (2)
- DTXC9245 SHOCK SPRING FRONT YELLOW MEDIUM (2)
- DTXC9246 SHOCK SPRING FRONT GREEN HARD (2)
- DTXC9260 SHOCK SPRING FRONT SOFT SILVER (2)
- DTXC9261 SHOCK SPRINGS REAR SOFT SILVER (2)
- DTXC9403 88T 48P SPUR GEAR
- DTXC9452 STEERING BELLCRANS BLUE
- DTXC9453 STEERING BELLCRANS GREEN
- DTXC9454 STEERING BELLCRANS YELLOW
- DTXC9576 SWAY BAR SET FRONT
- DTXC9577 SWAY BAR SET REAR
- DTXC9640 ALUMINUM TRANSMISSION BRACE BLUE
- DTXC9641 ALUMINUM TRANSMISSION BRACE PURPLE
- DTXC9727 TITANIUM NITRIDE FRONT SHOCK SHAFT (1)
- DTXC9729 TITANIUM NITRIDE REAR SHOCK SHAFT (1)
- DTXC9827 TITANIUM TURNBUCKLE SET (6)
- DTXC9842 WHEELS FRONT YELLOW (2)
- DTXC9843 WHEELS FRONT GREEN (2)
- DTXC9844 WHEELS FRONT BLUE (2)
- DTXC9845 WHEELS REAR YELLOW (2)
- DTXC9846 WHEELS REAR GREEN (2)
- DTXC9847 WHEELS REAR BLUE (2)

* STRESS-TECH[™] PARTS IN BOLD

FREE REPLACEMENT GUARANTEE

DURATRAX IS SO CONFIDENT IN THE QUALITY AND DURABILITY OF STRESS-TECH PARTS THAT WE'LL REPLACE ANY STRESS-TECH PART THAT BREAKS DURING THE FIRST 12 MONTHS YOU OWN THE EVADER BX. JUST SEND THE BROKEN PART TO DURATRAX AND WE WILL SEND YOU A FREE REPLACEMENT. SEE THE INSTRUCTION MANUAL FOR MAILING ADDRESS AND DETAILS.

PROTECTED BY A
STRESS-TECH GUARANTEE
1 YEAR

GET THE MOST OUT OF YOUR EVADER BX RTR WITH THESE AWESOME ACCESSORIES FROM DURATRAX!

PIT TECH[™] DELUXE CAR STAND

A rotating top on this tough polystyrene stand enables it to double as a handy workbench or display showcase. Holes in the top and trays in the base keep shocks, tools and parts within easy reach. Assembles easily, stores flat to save space.
DTXC2370 Blue
DTXC2371 Orange
DTXC2372 Purple
DTXC2373 Green



NICD CONVERSION KIT

Why buy disposable alkaline cells, when you can install Sanyo[®] NiCds and use them hundreds of times? Recharging is simple: plug the charger into the wall, the plug into your radio — and you're done. Takes only 2-3 hours. DTXP4010



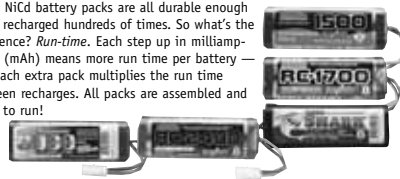
POWER SHOT[™] MOTOR SPRAY

A must for routine car maintenance, ozone-safe Power Shot quickly removes performance-robbing dirt and grime. It's completely safe for Lexan[®] bodies and most other plastics. DTXC2458



BATTERY PACKS

These NiCd battery packs are all durable enough to be recharged hundreds of times. So what's the difference? *Run-time*. Each step up in milliamp-hours (mAh) means more run time per battery — and each extra pack multiplies the run time between recharges. All packs are assembled and ready to run!



INTELLIPEAK[™] PULSE CHARGERS

The "smart" IC chip in IntelliPeak Chargers makes sure each battery gets a peak (full) charge, whether it's a NiCd battery, or one of the new NiMH (Nickel-Metal Hydride) packs. IntelliPeaks can be used at home or at the track, to charge, discharge or even cycle (charge and discharge) a pack automatically. 1-year warranty. DTXP4100-4130



EVADER[™] BX

BROCHURE NO. DTXC0064 © COPYRIGHT 2002 — 308812112Z