

# GREAT NEWS

GREAT PLANES MODEL DISTRIBUTORS

RADIO CONTROL • JANUARY 2018



**SCX10™ II Trail Honcho**  
Pages 2-3



**PLUS:**

**Onyx™ Batteries** — The Ultimate Power Source  
Pages 4 – 5

**ARRMA 2018 6S BLX** line up is ready for blistering bashing!  
Pages 8 – 9

**Associated RC28T** — A small-scale superstar of the classic Stadium Truck.  
Page 10

[Click for Radio Control](#)

# GREAT NEWS

GREAT PLANES MODEL DISTRIBUTORS

GENERAL HOBBY • JANUARY 2018



**1/24 '78 GMC® Big Game Country Pickup**  
Pages 4



**PLUS:**

**Estes® Citation Patriot**  
Page 2

**Plastic models** for all ages and interest  
Pages 4-15

**Artesania Latina Sopwith Camel**  
Pages 15

[Click for General Hobby](#)



**SCX10™**

**SCX10™ II TRAIL HONCHO™**

1/10th SCALE • ELECTRIC • 4WD • AX90059

**READY TO RUN**



- AR44 single piece axles with integrated molded truss for extreme durability
- Proven AX10™ transmission
- Tactic TTX200 2-channel, 2.4ghz transmitter
- AE-5L ESC with dual LED leads. A total of four LED lights included!
- Officially licensed 1.9 Falken Wildpeak M/T tires - S30
- Officially licensed 1.9 Method Hole wheels - Black
- Scale front tube bumper with aluminum skid plates
- WB8 HD Wild Boar™ driveshafts
- Re-designed, durable plastic suspension links

AXID9059 - SCX10™ II Trail Honcho  
 Length: 19.25" (489mm)  
 Width: 8.9" (226mm)  
 Height: 9.4" (239.4mm)  
 Wheelbase: 12.3" (313mm)  
 Ground Clearance: 3" (77mm)  
 Weight: 4.5lbs (2.04kg)

For additional items see a complete list at [www.GPDealer.com](http://www.GPDealer.com)





# THE ULTIMATE POWER SOURCE



ONYX RC electronics launched in 2008 to instant acclaim. Never before had modelers found so many advanced features in chargers within their price range. ONYX broke through technical barriers and changed how all RC companies designed chargers from then on. ONYX means more value for your money!

## Available soon from ONYX:

### NiMH Batteries

#### Transmitter and Receiver Batteries

- Single cells and flat, square, and hump packs
- AAA, 2/3A, AA, and sub-C cells — universal and JST plugs **ONXM2073 – ONXM2425**

### Power Batteries

- 6- and 7-cell flat, stick and hump packs for powering motor/ESC systems
- 2/3A and sub-C cells — standard, mini, and Star® plugs **ONXP5136 - ONXP5509**

### LiPo Batteries

Perfect for competition, sport, upgrades, and more! ONYX plans a comprehensive range of discharge rates, capacities, and popular connector styles — including ultra micro, flat micro, micro, JST, XT60, and Star®. Look for easy-to-use JST-XH balancing plugs on all multi-cell packs. Ultra-sonic welding of cell tabs and balancing wires ensures strong joints with great electrical conductivity.

### Miscellaneous LiPo Batteries

These single-cell and multi-cell packs make ideal replacement batteries for many LiPo-powered models. **ONXP0010 – ONXP1540**

25C Continuous Discharge (50C Burst), 3C Maximum Charge Rate

30C Continuous Discharge (60C Burst), 4C Maximum Charge Rate

Lightweight and economical for sport use. Some 25C packs feature hard cases for car applications. **ONXP1640 – ONXP2468**

35C Continuous Discharge (70C Burst), 4C Maximum Charge Rate

40C Continuous Discharge (80C Burst), 4C Maximum Charge Rate

These provide a little extra power — without turning cost and weight into considerations. Hard case packs are available for car use. **ONXP2500 – ONXP3040**

50C Continuous Discharge (100C Burst), 4C Maximum Charge Rate

70C Continuous Discharge (140C Burst), 4C Maximum Charge Rate

Batteries that are all about performance! High discharge ratings for applications that require raw power. **ONXP3300 – ONXP4073**

Learn more at [onyx-rc.com](http://onyx-rc.com)

**SCX10™**

**SCX10™ II 2017 JEEP® WRANGLER  
UNLIMITED CRC**

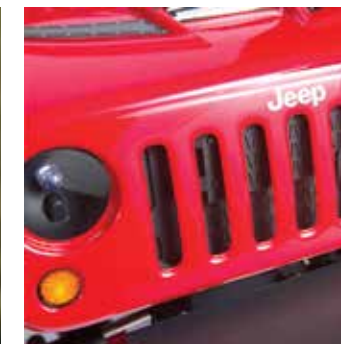
1/10th SCALE • ELECTRIC • 4WD • AX90060

**READY TO RUN**



Jeep, the Jeep grille and related logos, vehicle model names and trade dress are trademarks of FCA US LLC and used under license by Axial Inc. © 2017 FCA US LLC.

Nitto® and Trail Grappler® are registered trademarks of Nitto Tire U.S.A., Inc.



- AR44 Hi-Pinion axles with metal gears for added ground clearance
- AR44 Universal Axle Set
- 2017 Jeep® Wrangler Unlimited body with molded scale detail parts and accessories
- AE-5L ESC with dual LED leads. A total of six LED lights included!
- Officially licensed 1.9 Nitto Trail Grappler M/T tires - S30
- Officially licensed 1.9 KMC XD229 Machete Crawl wheels - Black

- All metal gear transmission
- WB8 HD Wild Boar™ driveshafts
- All steel suspension links

**AXID9060 - SCX10™ II 2017 Jeep® Wrangler Unlimited CRC**  
**Length:** 19.25" (489mm)  
**Width:** 8.9" (226mm)  
**Height:** 9.4" (239.4mm)  
**Wheelbase:** 12.3" (313mm)  
**Ground Clearance:** 3" (77mm)  
**Weight:** 4.5lbs (2.04kg)

For additional items see a complete list at [www.GPDealer.com](http://www.GPDealer.com)

**From the Experts:**

Axial is constantly moving forward in an effort to maximize performance and detail for scale enthusiasts. The SCX10™ II 2017 Jeep® Wrangler Unlimited CRC edition is a perfect example of that union, matching unparalleled trail-ability with stunning good looks. Some of the specialized parts we've included are CRC front and rear bumpers, unique rock rails with additional body-mounting points, molded front and rear fenders and a CRC-inspired hood. Additional external scale features consist of molded side mirrors, door handles, windshield wipers, hood latches and a full set of lights (six in total) that mount into a realistic front radiator/light bucket combo.

**Long story short...**

*The SCX10™ II is the culmination of many years of development, furthering aesthetic realism while maximizing trail performance. The next generation of SCX10™ is here!*



NEWPRODUCT

# BLISTERING BRUSHLESS BASHERS

ARRMA is ushering in a new era of brushless bashing with its 2018 6S BLX lineup. Every vehicle, from the TYPHON Speed Buggy to the updated OUTCAST Stunt Truck, combines incredible top speeds with extreme toughness. When it comes to strength and performance, nothing beats an ARRMA RTR!

### All include:

- Tactic® TTX300 2.4GHz 3-channel radio
- Tactic TR326 2.4GHz 3-channel receiver
- BLX 4074 2050kV brushless motor
- Waterproof BLX185 brushless ESC
- Waterproof ADS-15M metal gear steering servo
- Adjustable oil-filled shocks with 4 mm shafts
- Stronger front arms
- Stiffer servo mount
- Stronger bulkheads
- Stronger front and rear chassis braces
- Aluminum shock towers
- Shock cap protectors
- dBoots™ tires
- Multi-spoke wheels
- Two XT90 battery connectors



# OUTCAST



ARAD84NW 1/8 OUTCAST 6S BLX 4WD EP RTR Orange  
 ARAD84SW 1/8 OUTCAST 6S BLX 4WD EP RTR Silver  
 Length: 21.3 in (540 mm)  
 Width: 18.2 in (461 mm)  
 Height: 9.1 in (231 mm)  
 Wheelbase: 12.9 in (327.6 mm)  
 Weight: 171 oz (4.8 kg)

All require: one 4-6S LiPo battery or two 2-3S LiPo batteries with XT90 connectors, charger and (4) AA batteries

NEWPRODUCT

# KRATON 6S



ARAD81LG 1/8 KRATON 6S BLX 4WD EP RTR Green  
 ARAD81LR 1/8 KRATON 6S BLX 4WD EP RTR Red  
 Length: 23.4 in (594 mm)  
 Width: 18.1 in (460 mm)  
 Height: 7.7 in (195.5 mm)  
 Wheelbase: 14.8 in (377 mm)  
 Weight: 159 oz (4.5 kg)

# SENTON 6S



ARAD83LG 1/8 SENTON 6S BLX 4WD EP RTR  
 Length: 21.7 in (551 mm)  
 Width: 11.6 in (294.6 mm)  
 Height: 7.7 in (195.5 mm)  
 Wheelbase: 12.9 in (327.6 mm)  
 Weight: 128 oz (3.6 kg)

# TYPHON 6S



ARAD80BS 1/8 TYPHON 6S BLX 4WD EP RTR  
 Length: 20.1 in (510.5 mm)  
 Width: 12.2 in (309.8 mm)  
 Height: 7.5 in (190.5 mm)  
 Wheelbase: 12.9 in (327.6 mm)  
 Weight: 115 oz (3.3 kg)



# ASSOCIATED 1/28 RC28T 2WD ELECTRIC RTR

A classic comes back – in small-scale form



A stadium truck classic returns as a small-scale superstar with the 1/28 RC28T RTR from Associated. This easy-to-drive racer comes with everything you need to enjoy it, including a 2-channel radio with built-in charge cable, a LiPo battery and painted body. Buy one for yourself – and buy another for a friend!

- Comes with everything you need!
- Molded plastic chassis
- Rear wheel drive
- Integrated ESC/receiver unit
- Integrated proportional servo
- 2-channel pistol-grip radio with built-in battery charge cable
- LiPo battery
- 1/28 replica RC10T body in red, white and blue
- Flexible molded plastic front bumper
- Two plastic rear friction shocks
- White plastic wheels

ASCD0151 20151 Associated 1/28 RC28T 2WD EP RTR  
 Length: 5.8 in (147 mm)  
 Width: 3.7 in (93 mm)  
 Wheelbase: 3.9 in (99 mm)  
 Weight: 3.2 oz (90 g)  
 Requires: Nothing!



## PROTOFORM TYPE-S PRO-LITE WEIGHT CLEAR BODY 190MM

High-downforce racing body for 190mm electric touring cars

- The ultimate aerodynamic solution for modified classes or wherever more grip is needed
- Extensively tested by world-class drivers – EFRA and ROAR approved
- Includes decal sheet, window masks, overspray film, and metric wing mounting hardware

Length: 16.6 in

1560-22 PRMC1602  
 Type-S PRO-Lite Clear Body 190mm

Sold in clear polycarbonate. Shown painted for illustration purposes only.



www.gpdealer.com

## PRO-LINE® 1946 DODGE POWER WAGON CLEAR BODY

For 12.3" (313mm) wheelbase scale crawlers

- Separate cab and bed, true to the original, military-inspired 4x4 truck
- Menacing front grill, large fender flares, and round headlights that accept LED lights
- Comes with window mask and decal sheet

Length: 18.6 in

3499-00 PROC0213  
 1946 Dodge Power Wagon Clear Body

Sold in clear Lexan®. Shown painted for illustration purposes only.



Dodge and related logos, vehicle model names and trade dress are trademarks of FCA US LLC and used under license by Pro-Line.

## PRO-LINE® PRE-CUT MONSTER FUSION CLEAR BODY

For Slash 2WD and Slash 4x4 with 2.8" MT Tires

- Specifically designed to simplify Slash conversions to using 2.8" Monster Truck tires
- Aggressive, low-slung Fusion styling with large vents to prevent blow overs
- Includes window mask and decal sheet

Length: 22.25 in

3498-17 PROC0350  
 Pre-Cut Monster Fusion Clear Body

Sold in clear Lexan®. Shown painted for illustration purposes only.



## PRO-LINE® SUMO CLEAR BODY

For 10" wheelbase crawlers

- Classic mini-SUV style captures the essence of full-size off-road warriors
- Exposed trunk area allows for scale accessories
- Comes with window mask and decal sheet

Length: 15.5 in

3501-00 PROC0954  
 Sumo Clear Body

Sold in clear Lexan®. Shown painted for illustration purposes only.

GOODYEAR (and Wingfoot design) is a trademark of The Goodyear Tire & Rubber Company, Akron, Ohio USA used under license by RC4WD.



## RC4WD GOODYEAR WRANGLER MT/R 1.9" SCALE TIRES

- Advanced X2S<sup>3</sup> compound
- Officially licensed by Goodyear®
- Certified by Recon G6
- Foam inserts and decals included. Sold in pairs

Outer Diameter: 4.75 in (120 mm)  
 Inner Diameter: 1.9 in (48 mm)  
 Width: 1.62 in (41.6 mm)  
 Tire Weight: 3.15 oz (89.5 g)

Z-T0158 RC4C0266 RC4WD Goodyear Wrangler MT/R 1.9" Scale Tires



# WIN WITH REVELL PINewood DERBY® PRODUCTS!

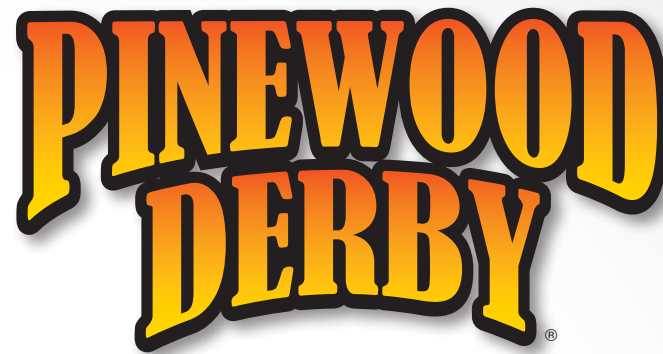
Build your racer, or enjoy convenient, all-in-one kits

Create a winner from scratch:  
Start with...



Basic Racer Kit  
RMXY9632

Officially licensed by the Boy Scouts of America



Finish and fine-tune with...



Carving Set  
RMXY9648



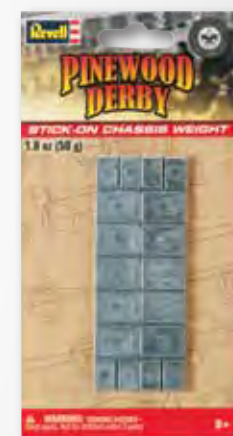
Paint & Brush Set  
RMXY9630



Round Chassis Weight  
RMXY9601



Tapered Chassis Weight  
RMXY9602

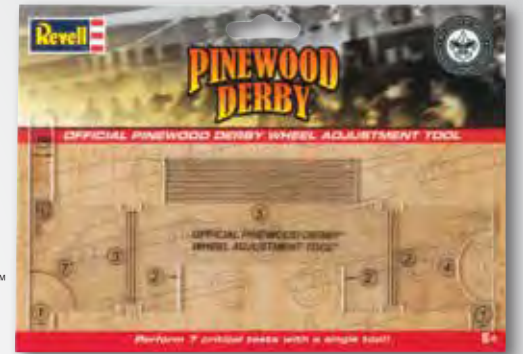


Stick-On Chassis Weight  
RMXY9603



Axle Polishing Set  
RMXY9615

Wheel Adjustment Tool™  
RMXY9616



Light it UP with...



Graphite Powder  
RMXY9614

Official Wheel & Axle Set (Black)  
RMXY9608



LED Light Kit  
RMXY9451

## Pinewood Derby® made easy:

Hit the track first with these kits

- Extras include official wheels and axles
- **Trophy Series** sets also include paint
- Just finish and race!

- RMXY9401 Trophy Series™ Kit BATMAN® Racer
- RMXY9402 Racer Series™ Kit SCOOBY-DOO® Dune Buggy
- RMXY9404 Racer Series SUPERMAN® Sports Car Racer



See the complete line of Pinewood Derby® products at [revell.com](http://revell.com)



Pinewood Derby® is a registered trademark of the Boy Scouts of America. Manufactured under license. All rights reserved. For more information on Scouting, visit [scouting.org](http://scouting.org).

SCOOBY DOO®, BATMAN® and SUPERMAN® and all related characters and elements © & TM DC Comics and Warner Bros. Entertainment Inc. (s16)

NEW PRODUCT

# ESTES® CITATION PATRIOT

## A classic blast from the past

Skill Level **1**

- Fun to fly – packed with detail!
- Projected Altitude: 600 ft (183 m)
- Recommended Engines: B4-2 (first launch), B6-2, B6-4 and C6-5



**ESTT0652**  
 Length: 25.6 in (65 cm)  
 Diameter: 1.64 in (42 mm)  
 Weight: 3.2 oz (90.7 g)



www.revell.com

### 1/35 SPZ MARDER 1A3

Speed for the strike

Marders have been used by the German Army since the early seventies to provide a highly mobile armored striking force. They can move up to seven infantry quickly and relatively safely over long distances and support them, at the front, with smoke grenade launchers and a 20mm autocannon. It's one of the best Infantry Fighting Vehicles around and has proven itself in combat in Afghanistan. There, it has proven crucial to stopping numerous attacks. **Kit features** rotating turret, elevating gun, detailed Milan missile system with night vision unit, easy to assemble tracks, and three sets of decals.

03261 RVL3261 Total Parts: 182 Skill Level: 4 Length: 7.8 in (197mm)



### 1/76 CHALLENGER

300 to Zero

After losing badly in tests and competitions, Parliament was worried that the Challenger simply couldn't perform on the battlefield. During the Gulf War, it proved the MPs had been put off their tea for no reason. Challengers reportedly destroyed 300 Iraqi tanks for no losses in the opening days of the offensive, driving through Iraq and into Kuwait. Since 2001, the Challenger has been replaced, in British service, by the Challenger II. Surplus Challenger I tanks form the backbone of Jordan's tank forces. **Kit features** revolving turret, diorama base, and two sets of decals.

03308 RVL3308 Total Parts: 100 Skill Level: 4 Length: 6 in (152mm)



### 1/48 A-26B INVADER

Spitting bullets

Mounting six to eight guns in the nose, under-wing guns in pods, rockets, and bombs, the A-26B Invader had more than enough hardware to mess up any Nazi's whole day. America used them in World War II and Korea, then the CIA used them to support the Bay of Pigs Invasion, to strafe rebels in the Congo, and to track down Pathet Lao. **Kit features** detailed interior fittings, three crew figures, rotating machine gun turrets, bomb bay with 8 bombs, rotating propellers, detailed under carriage, machine gun pods, rockets, and decals for two USAAF versions.

03921 RVL3921 Total Parts: 173 Skill Level: 4 Length: 12.9 in (328mm)  
 Width: 17.5 in (445mm)



### 1/48 D.H. MOSQUITO BOMBER

Biting Berlin

The de Havilland Mosquito was one of the fastest and longest-ranged prop-driven aircraft of WWII. Its variants included recon planes, light bombers, and night fighters—all roles at which it excelled. As a light bomber, it flew faster and was more maneuverable than most enemies. It stayed out of harms way and delivered precision strikes on high-value targets. Including bombing a Berlin radio station on an important Nazi holiday during Air Marshal Hermann Goring's speech! **Kit features** fine surface structures, choice of Merlin engine, and decals for 105 and 627 squadrons.

03923 RVL3923 Total Parts: 222 Skill Level: 5 Length: 10.2 in (258mm)  
 Width: 13.5 in (342mm)



### 1/25 BAJA BRONCO

Perfect for a desert drive

Off road, the Bronco rules. In the mid-sixties, the Bronco started rolling off the lines and Bill Stroppe Racing entered them into the Baja 500 and Mexican 1000 races. After big wins in both events, Ford started offering specially made Baja Broncos to select dealers in the early seventies. **Kit features** detailed V-8, separate frame, removable top, swing away spare tire, roll bar, back seat, lots of chrome plated parts, and soft black tires.

85-4436 RMXS4436 Total Parts: 137 Skill Level: 3 Length: 6.4 in (162mm)  
 Width: 2.8 in (71mm)



### 1/24 '78 GMC® PICKUP

Deep woods driver

Pickup trucks are everything from solid, stable work vehicles to glamorous, low-riding speed demons with hydraulics. Their list of applications is as long as their list of proud owners. Our model, the GMC® Big Game Country represents a backwoods explorer that's modified for going where suburban grocery getters only dream of. **Kit features** detailed V-8 engine, 4 wheel drive suspension, separate frame, fold down tailgate, CB radio, gun rack, and soft black tires.

85-7226 RMXS7226 Total Parts: 105 Skill Level: 4 Length: 8.2 in (208mm)  
 Width: 4.3 in (110mm)





**1/72 T-6 G TEXAN**  
Standing out and standing in

Over fifteen thousand T-6 Texans were built and sent to all corners of the globe. They were used as trainers, as active combat aircraft with smaller air forces, and even as stand ins for other aircraft in big-budget Hollywood productions like "Tora-Tora-Tora". Of the many thousands built, many are still flying today. **Kit features** detailed two seat cockpit, structured surfaces, and warbird markings.

03924 RVL53924 Total Parts: 249 Skill Level: 3 Length: 4.8 in (121mm)  
Width: 7 in (178mm)



**1/32 HEINKEL HE219 A-0 NIGHTFIGHTER**  
Fearsome flyer

The Allies were quite fortunate that disagreements and delays within the Nazi state prevented the He 219 from being produced until late in the war. These birds were devastatingly destructive and fully capable of hunting down bombers in the dark. Their payload of 20 and 30mm cannons could take apart even the sturdiest-built bombers and their twin-engine layout gave them the resilience to take return fire and still get back to base. **Kit features** fine details and recessed panel joints plus a detailed cockpit, separate control surfaces, motor front ring with radiator, moving propellers, and FuG 218 and 220 radar antennas. Includes three sets of decals.

03928 RVL53928 Total Parts: 259 Skill Level: 5 Length: 20.6 in (524mm)  
Width: 22.8 in (578mm)



**1/32 P-51D MUSTANG**  
Trouble over target

The Fw 190 breaks left and all six .50 cal's on the Mustang chew through the engine compartment, the cockpit, and the tail. Tommy doesn't have even a moment to celebrate, 20mm rounds buzz past the cockpit as the downed 190's wingman cuts loose early. At full throttle and with the stick all the way forward, the Mustang slices through air, but the other 190 is right on his tail. Tommy grits his teeth and breaks left. **Kit features** position able flaps, optional seat and exhausts, and decals for two aircraft.

03944 RVL53944 Total Parts: 158 Skill Level: 5 Length: 11.8in (300mm)  
Wingspan: 13.9in (352mm)



**1/32 F-4G PHANTOM USAF**  
Hunting the hunters

Tasked with silencing enemy SAMs, "Wild Weasel" aircraft flew missions that were intrinsically dangerous, but necessary. By getting a missile battery to lock on to it, the aircraft follows the radar pulse back to its source and eliminates it with its own missiles... in theory. **Kit features** F-4G nose, detailed surfaces and cockpit, detailed ejection seat, intricate F-4G instrument panel, detailed rudder/elevators, choice of extended or retracted under-carriage and air brakes, external load pylons, ventral fuel tank, wing-mounted fuel tanks, AIM-7E Sparrow guided missiles x2, AIM-120 guided missiles x4, ECM pod, AGM-45 Shrike missile, AGM-78, and decals for two USAF versions.

04959 RVL54959 Total Parts: 315 Skill Level: 5 Length: 23.5in (597mm)  
Wingspan: 14.4in (366mm)

**1/144 SUBMARINE CLASS 214**  
Exceptional exports

Amongst the many outstanding features of the 214 Class is the ability to be at sea for 84 days (based on stores and fuel), a propulsion system that uses hydrogen fuel cells which require no air, a massive surfaced range, and the ability to stay submerged for up to three weeks. For countries looking for local rather than global power projection, it's an exceptionally cost-effective alternative to a nuclear sub. Many world Navies own or have ordered the type. **Kit features** deployable equipment like periscope, transparent parts for lights, moving dive planes, bollards and pennants, display stand, and decals for Greek, Portuguese, and South Korean vessels.

05153 RVL55153 Total Parts: 66 Skill Level: 4 Length: 17.9 in (455mm)



**1/1200 USS HORNET**  
America's answer

Early morning, April 18th, massive 30-foot swells lift the ship like a bronco trying to shake a cowboy as the flight deck turns to take a 40+mph gale straight in the teeth. Thickly muffled crews rush to the massive planes that take up nearly the full width of the flight deck. Bombers. B-25s. America's answer to the attack on Pearl Harbor. Japan thought they'd knock us out of the war in one blow. Like hell. It's 690 miles to Japan from where the Hornet rides the bucking ocean, but the B-25s are ready to deliver the message. Today, Tojo gets one right in the nose. **Kit features** structured deck, waterline hull, 16 B-25 bombers, and authentic decals.

05823 RVL5823 Total Parts: 36 Skill Level: 4 Length: 8.1 in (206mm)



**1/24 PORSCHE PANAMERA TURBO**  
A driving need

Porsche Panamera Turbo is an elegantly styled and dynamic sports car with a top speed of 0 to 60mph in 3 seconds. With an 8 speed automatic and all-wheel drive, it surely earns the title of supercar. The 2nd generation has been available since November 2016. Can be optionally built as left or right hand drive. **Kit features** include opening engine cover and decal set with various registration plates (D, A, NL, B, F, GB, I, CH, RUS).

07034 RVL57034 Total Parts: 98 Skill Level: 3 Length: 8.3 in (211mm)



**1/25 PORSCHE 911 TURBO**  
Stuttgart stunner

The Porsche 911 has had one of the longest continuous production runs of any modern vehicle. It is still currently in production and available all over the world. Many variants have come from Porsche designers and passed off assembly lines including the 1987 Porsche 911 Turbo. This vehicle, which boasted unique features like a "whale tail" rear spoiler and a 330 hp flat-six engine, was originally introduced in 1975 and upgraded with improved engine power and performance. **Kit features** separate engine cover and full decals.

07179 RVL57179 Total Parts: 86 Skill Level: 4 Length: 7.1 in (180 mm)





### 1/24 PORSCHE JUNIOR 108

Home on the grange

The name "Porsche" evokes images of fast cars, racy suspensions, and top performance, but, in the fifties and sixties, Porsche Juniors offered top performance in a completely different field. These 12hp tractors were the workhorses of a nation eager to get back to the hard work of peace. **Kit features** detailed engine halves, glue-free snap-together construction, opening hood, and two seat options on the rear wheel arch.

07820      RVLS7820      Total Parts: 70      Skill Level: 2      Length: 4.2 in (107 mm)



### 1/72 MITSUBISHI G4M2A TYPE 1 ATTACK BOMBER

Fighting for the Philippines

The battle for the Philippines was devastating. Japan committed over half a million men to control of their acquisition. Facing them, combined, were a million and a half US soldiers and organized Filipino resistance fighters. Japan committed waves of obsolete fighters and bombers into the conflict, some as kamikazes, and ordered its infantry to hold out at all costs—to no avail. Filipino/American forces drove the Japanese into the mountains and jungles or off the islands entirely. Over 330,000 Japanese soldiers died. Two years later, the Philippines were declared independent.

02263 (Limited Edition)      HSGS0263      Total Parts: 163      Skill Level: 3  
Length: 11.7 in (298mm)      Wingspan: 13.6 in (346mm)



### 1/72 J-15 CHINESE NAVY 2017

Carrier-capable killer

The PRC J-15 fighter is an aggressive carrier-capable copy of the Sukhoi-33. Liaoning, an aircraft carrier, was bought from Ukraine to be turned into a "casino". Instead the carrier was armed, upgraded, and used to launch the J-15. Today, it serves as a "training" vessel that is instructing the Chinese Navy in the finer points of aircraft carrier construction, operation, and armament. Limited edition **kit features** decals for two Liaoning-based aircraft.

02264 (Limited Edition)      HSGS0264      Total Parts: 204      Skill Level: 3  
Length: 12 in (306mm)      Width: 8.6 in (206mm)



### 1/72 F-15J EAGLE 2015Q CHITOSE AIR BASE

Sixty Years of Superiority

Watching the northern limits of Japanese air space isn't easy. Hokkaido, the northern island of the Japanese archipelago is far more rural and rugged than much of the country. For sixty years, Chitose Air Base has maintained a watch over this space, guarding against incursions from Russia, primarily. The F-15J Eagle is the exceptional aircraft that firmly turns away any encroaching aircraft. It's an exceptionally fast and heavily armed but relatively economical warbird. Limited edition **kit features** special, 60th anniversary decal set.

02265 (Limited Edition)      HSGS0265      Total Parts: 138      Skill Level: 3  
Length: 10.5 in (267mm)      Wingspan: 7 in (179mm)

### 1/24 ZAKSPEED ZK891

Automotive ambition

For 1989's Formula One season, Zakspeed enlisted Japan's Aguri Suzuki and Germany's Bernd Schneider to take its 891 racer to first place. Unfortunately, the car's underpowered engine prevented these skilled drivers from achieving that goal. As a result, Zakspeed bowed out of F1 racing and went back to touring car success. This limited edition **kit features** two marking options for the Formula One World Championship 1989 Zakspeed Racing Team: 1. Car no. 35, Driver Aguri Suzuki and 2. Car no. 34, Driver Bernd Schneider.

20324 (Limited Edition)      HSGS0324      Total Parts: 70      Skill Level: 3  
Length: 6.9 in (175 mm)      Width: 3.5 in (89 mm)



### 1/24 FINISH LINE MAZDA 767B

One mighty Mazda

The Mazda 767B made its motorsports debut on the track of the IMSA 24 Hours of Daytona in 1989. By the race's end, the 767B scored a respectable fifth-place finish, encouraging Mazda to test the car at other tracks. At the 24 Hours of Le Mans competition, two 767Bs finished in seventh and ninth places. The following year wasn't as promising for Mazda; the 767B finished in 20th place. This limited edition **kit features** one marking option: 1. Le Mans 24 Hours Race, 1989, Mazda Speed Team, Car no. 201.

20325 (Limited Edition)      HSGS0325      Total Parts: 80      Skill Level: 3  
Length: 7.6 in (192 mm)      Width: 3.7 in (83 mm)



### 1/24 JTCC SOK BMW 318i

The perfect match of prestige and performance

The All Japan Touring Car Championship (JTCC) was one of the most prestigious races of the 1980s and 1990s. In touring car races, vehicles are tested as much on endurance and handling as they are speed-making them some of the most demanding races in the world. Japanese cars typically dominated the race, but occasionally, international cars and drivers would claim the prize. This limited edition **kit features** one marking option: 1. JTCC: All Japan Touring Car Championship, Team Take One, Car no. 30.

20326 (Limited Edition)      HSGS0326      Total Parts: 70      Skill Level: 3  
Length: 7.3 in (185 mm)      Width: 2.8 in (70 mm)



### 1/24 TOYOTA 2000GT 1967 SUZUKA 500 KM WINNER

In it to win it

Sporting a signature "figure-eight" layout, the Suzuka Circuit started out as a Honda test track in 1962. By 1967, Hiroshi Fushida was winning the 500 km race on it. Fushida's success in 1967 wasn't his last; the popular driver also placed first in Class C of the 1975 Hardie Ferodo 1000. This limited edition **kit features** two marking options: 1. Suzuka 500 km Race 1967, Winner: Car no. 61, Driver: Hiroshi Fushida and 2. Car no. 60, Driver: Shihomi Hosoya.

20327 (Limited Edition)      HSGS0327      Total Parts: 100      Skill Level: 3  
Length: 6.9 in (175 mm)      Width: 2.6 in (67 mm)

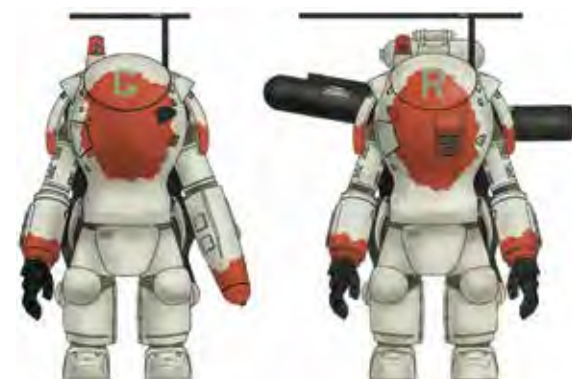




### 1/72 JAPANESE NAVY AIRMEN SET Pilots of the Rising Sun

The Imperial Japanese Navy established the First Air Fleet in April of 1941, which consolidated five separate fleets into one dominating air force. At its disposal were 10 aircraft carriers and 3,000 aircraft, including the legendary Mitsubishi A6M Zero. Although the Imperial Japanese Navy Air Service proved quite effective for the first half of the war, gasoline and troop shortages contributed greatly to late-war battle losses. **Kit features** parts for 16 pilot figures in six different poses.

35116 HSGS3516 Total Parts: 64 Skill Level: 3



### 1/35 MASCHINEN KRIEGER FIREBALL SG & SG PROWLER Machined mercenaries

The sci-fi series Maschinen Krieger was created by artist Kow Yokoyama in the early 1980s, first appearing in the popular magazine Hobby Japan. The series was inspired by armor and aircraft from both World Wars, as well as several iconic science fiction films. Today, Maschinen Krieger continues to have a devoted cult following, thanks to its celebrated return to Hobby Japan magazine in 2009. This limited edition **kit combo features** two kits with powered suit parts and four marking options for the Mercenary Troops Arms Armored Fighting Suite Space Type.

64113 (Limited Edition) HSGS4113 (Includes 2 Kits) Total Parts: 42/49  
Skill Level: 3 Length: 2.7 in (68mm) each Width: 1.7 in (43 mm) / 2.3 in (57.5 mm)



### HAPPY EGG GIRLS "REI HAZUMI" WITH 54CM MORSER KARL Hazumi's got a gun!

What's better than a 54cm mortar that fires 2,760 lb shells six miles? How about the same gun with a hot chick straddling the barrel and a flag? The "Karl-Gerat" or "Mörser Karl" rushed to Russia where it socked the Soviets then, later, brought war to Warsaw where it pounded the Poles. Afterwards it was aimed at the Americans but had to be rerouted to help rain ammo on the Red Army. **Kit features** 1/72 scale 54cm Mörser Karl plus a new, resin, girl figure and flagpole ornament in 1/24 scale.

52170 (Limited Edition) HSGS5270 Total Parts: 228 Skill Level: 3  
Length: 6.4 in (162mm) Width: 2.2in (55mm)



### 1/48 POLIKARPOV I-153 "FINNISH AIR FORCE" Strafing over snow

Designed by the Soviet Union in the lead up to WWII, the Polikarpov I-153 was one of the world's last successful biplane fighters. It combined the tremendous maneuverability of all biplanes with high speeds and four machine guns. When the Soviets opened the Winter War against Finland, Finland used everything at its disposal to fight back. This included several captured I-153s which managed to shoot down many of their former comrades! Limited edition **kit features** decals for a Finnish I-153.

07461 (Limited Edition) HSGS7461 Total Parts: 100 Skill Level: 3  
Length: 5.1 in (130 mm) Wingspan: 8.2in (208mm)

### 1/48 MIKOYAN-25RBT FOXBAT "RUSSIAN AIR FORCE" Intercept a Cold War classic

One of many MiG-25 variants, the MiG-25RBT Foxbat boasted Tangaz Electronic Signals Intelligence (ELINT) equipment that made it a must-have for recon and bombing missions. Thanks to a top speed of Mach 2.83, the MiG-25RBT remains the second-fastest recon aircraft (after the SR-71 Blackbird). The aircraft also set a number of high-altitude records worldwide, in which altitudes of 20,000 meters or greater were reached. This limited edition **kit features** plastic parts produced by ICM and one marking option: 1. Russian AF, Code: Red-55.

07462 (Limited Edition) HSGS7462 Total Parts: 170 Skill Level: 3  
Length: 11.1 in (283 mm) Width: 11.1 in (283 mm)



### 1/72 KA-6D INTRUDER Fast fuel

The A-6 Intruder was a ground attack aircraft purpose-built for fast strikes on high-value targets. In the seventies, however, some of these aircraft took on an even more important role. Equipped with nozzles, hoses, and large fuel tanks, they became the Navy's fastest carrier-capable aerial refueling aircraft. They were capable of keeping up with strike teams on their way to a target, providing mid-mission refueling, then turning back for the carriers. **Kit features** decals for four versions and full instructions

1405S ITAS1405 Total Parts: 110 Skill Level: 3 Length: 9.1 in (230mm)  
Width: 8.9 in (225mm)



### 1/48 JU 87 B-2/R-2 "PICCHIATELLO" Mussolini's maulers

The Stuka, in Italian service, was called the "Picchiatello", meaning "crackpot". Whether that refers to how crazy you have to be to turn into a ninety-degree dive and rain bombs on your target is up for interpretation. The early war years saw Italian pilots flying the Ju 87 to significant success, but the ability of the dive bomber to sow terror and havoc was curtailed, in comparison with the German use, due to low numbers deployed. Nevertheless, the "Picchiatello" and its bombs made quite the mark. **Kit features** full decals for five version, photoetched parts, and full instructions.

2769S ITAS2769 Total Parts: 141 Skill Level: 4 Length: 11.3 in (288mm)  
Width: 11.3 in (288mm)



### 1/24 FORD TRANSIT UK POLICE Crowd Control Car

Starting in the 1980s, the London Metropolitan Police force bought and used Ford Transits for major traffic incidents and large public events. You can put a lot of Bobbies in the field all at once with a Transit and you can pick up a lot of bad guys all at once, too. The extra wheels were badly needed. Crime rose throughout the eighties and peaked in the mid-nineties. Orders outpaced expectations so far that manufacturing had to be moved to larger facilities in England. **Kit features** detailed parts, rubber tires, and full decals.

3657S ITAS3657 Total Parts: 75 Skill Level: 3 Length: 7.3 in (185mm)





### 1/72 SD.KFZ. 265 KLEINE PANZERBEFEHLSWAGEN Command for conquest

This variant on the Panzer I added a fixed cupola in place of the rotating turret for additional room so that tank commanders could have a sort-of rolling command center. They also were equipped with an extra antenna or additional range and eliminated the rotating turret of the Panzer I. These command tanks were in operation by the invasion of Poland and they helped coordinate the tanks rolling over the Low Countries and France. **Kit features** four sets of decals and full instructions.

7072S ITAS7072 Total Parts: 115 Skill Level: 3 Length: 2.4 in (61mm)

## Plastic Models



### AMT® 1/1400 Star Trek® Klingon™ Vor'Cha Designed to settle any score

Ever since its debut on the Next Generation, the Klingon Vor'Cha-Class Battle Cruiser has been a fan favorite. That enthusiasm carried over to Deep Space Nine, where the Vor'Cha played a decisive role in the Dominion War. Armed with 18 disruptor cannons, three photon torpedo launchers, and a disruptor beam, the Vor'Cha is a force to be reckoned with in any battle. **Kit features** authentically detailed parts, a sturdy metal support rod with Klingon symbol base and Klingon decal markings.

AMT1027/12 AMTS1027 Skill Level: 2 Length: 13.5 in (343 mm)



### AMT® 1/20 1993 GMC Sonoma 4x4 Meant to go off the beaten path

Where the road ends – adventure begins! That's what the GMC Sonoma promises, and that's what this AMT kit version delivers! It sports a raised "High-Rider" suspension that gets you where you need to go, and the included SLE decals add even more realism. **Kit features** an opening tailgate with cargo net option, roll bar with lights, 2 different wheel options, brush guard, bug shield, fender flares, turning front wheels, a detailed interior, chassis, drivetrain and exhaust, plus SLE package graphic decals.

AMT1057/12 AMTS1057 Skill Level: 2

### AMT 1/25 Dirty Donny 1969 Plymouth GTX Marvel of muscle

Another Dirty Donny classic makes its way to center stage! This wild ride is a Plymouth GTX, a marvelous muscle car from the best of all years—1969! This modded muscle machine is a true monster, well worthy of Dirty Donny, the king of collectibles. **Kit features** modern tooling, intricately detailed parts, and "groovy" graphics from Dirty Donny.

AMT1065/12 AMTS1065 Skill Level: 2

### AMT® 1/25 Tom Mongoose McEwen's Wedge Dragster Drag racing's fabulous fueler

Tom "Mongoose" McEwen is one of drag racing's most legendary drivers – and this special kit recreation of his famous Wedge Dragster does him justice! Not only does it honor McEwen, but it also honors the 50th anniversary of the Hot Wheels brand. **Kit features** a newly tooled multi-piece body molded in pearl blue, a super-detailed chassis, many gleaming chrome parts, a blue-tinted windshield, multiple black-molded parts, pad-printed drag slicks, authentic decals and illustrated packaging.

AMT1069/12 AMTS1069 Skill Level: 2

## Plastic Models



### AMT® 1/25 1950 Chevy Pick-Up Put the hammer down!

This sturdy 1950 3100 Pickup is a sure-fire favorite. Not only can you build it as a factory stock replica with wide whitewall tires, you can make it a gorgeous old-time Union 76 service station truck as well. **Kit features** optional roof flasher, front push bumper, sign boards for the pickup bed, deluxe decal sheet, Retro Deluxe™ Packaging, and more.

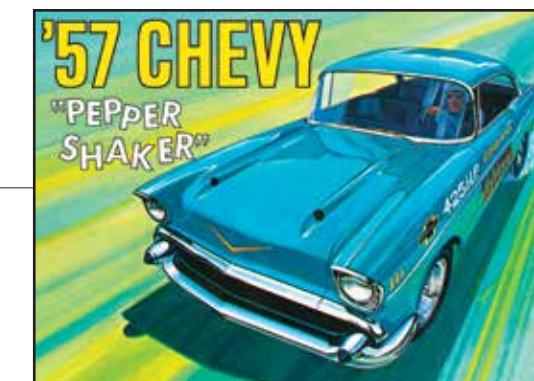
AMT1076/12 AMTS1076



### AMT® 1/25 '57 Chevy "Pepper Shaker" Three options, for three times the fun

A crazy classic returns with the reintroduction of the '57 Chevy "Pepper Shaker." It's printed from the original molds for "just-right" looks – and like the original full-size Chevy, it will turn heads no matter where it goes! **Kit features** white plastic molding, a choice of stock, custom or drag gasser versions, optional green-tinted gasser/custom windows, pad-printed whitewall tires and drag slicks, two sprues of gleaming chrome parts, expanded original decal art and Retro Deluxe™ illustrated packaging.

AMTS1079/12 AMTS1079 Skill Level: 2



### Bandai Gundam® 1/144 Petit'gguy Lockon Stratos Green & Placard

*Little? Who you callin' "little?"*

2018 is marking the 10th anniversary of "Mobile Suit Gundam 00" with a winning lineup of character-inspired Petit-gguys! Petit'gguy Lockon Stratos Green's design is based on the popular character of the same name. **Kit features** a placard for adding custom messages.

220707 BANS0707 Skill Level: 1 Length: Approx. size: 3.5 in (89 mm)



### Bandai® Gundam Kamen Rider Series Battle Hopper & Shadow Moon

*Collect an anime classic*

Bandai is proud to announce the latest addition to the popular Mecha Collection series – Kamen Rider Shadow Moon and the Battle Hopper! **Kit features** precisely reproduced details, including Shadow Moon's Rider Belt, mask and Elbow trigger. Shadow Moon is molded in black. Waterslide decals are included.

221053 BANS1053 Length: (approx.): 3 in (76.2 mm)





## Bandai® Thousand Sunny Memorial Color ver. "One Piece" Grand Ship Collection

*Set sail for adventure!*

The "Thousand Sunny" is available now in memorial colors inspired by the original series! The parts will be colored in a hue inspired by "Bubble coating". A plate with an illustration of the characters will be included. **Kit features** wave effect part, stickers, and full instructions.

BAN219771    BANS9771    Total Parts: 4 runners Skill Level:    Length: 5 in (127mm)

## Bandai® 1/144 Unit 2 (EXAM) Mobile Suit

*Destined for your collection*

Introducing the latest kit in the HGUC model lineup – the Gundam Blue Destiny Unit 2 EXAM from "Mobile Suit Gundam Side Story: The Blue Destiny!" **Kit features** a space backpack, a shoulder set for the Nimbus suit, two beam sabers, a beam rifle, a 100 mm machine gun, a shield and decal markings.

219774    BANS9774    Skill Level: 1    Length: Size (approx.): 5 in (127 mm)



## Dragon Models 1/72 Sd.Kfz.184 Elefant s.Pz.Jg.Abt.614

*End of the Reich*

It was over and any fool could see it. The last of the Elefants, fighting since Kursk, were assembled in the spaces between Berlin and Warsaw in the freezing winter of '45, awaiting the inevitable. And on the Russians came. Two and a quarter million infantry to swarm over the machine gun-less casemate. Over 7,000 armored fighting vehicles—far too many for even the superb 88 on the Elefant. 13,000 artillery pieces to rain down shells. In a losing war for an evil cause, the Elefant fought to the last house. **Kit features** full decals for a 1945 Elefant on the Eastern Front.

60356    DMLS0356

## Dragon Models 1/35 Kubelwagen Radio Car

*Bucket seats and a flat bottom*

Unlike virtually every other primary military vehicle of WWII, the Kubelwagen was only two wheel drive. Yet, it was still amazingly offroad capable. Its flat bottom allowed it to easily skid over sand, ice, and snow that bogged down other vehicles. Germany used them for staff and patrol cars as well as moving all-important radio equipment (which was very heavy) long distances. **Kit features** highly detailed pieces for radio set, an intricate driver figure, and full decals.

6886    DMLS6886

## Moebius® 1/8 1966 Joker

*Gotham City's merry prankster*

The Joker is everyone's favorite Batman villain – and it's easy to see why. In the '60s TV series, the legendary Caesar Romero played the Joker as a merry prankster who always tried to catch the Caped Crusader and his trusty sidekick, Robin. Unfortunately, for the Joker, it was Batman and Robin who always had the last laugh at the end of every cliffhanging episode. **Kit features** parts for optional arm and hand poses, a BATCAVE rock display base, nameplate and instructions.

956    MOES0956    Total Parts: 30    Skill Level: 3    Height: 11 in (279 mm)



## Moebius Models 1/144 2001: Discovery

*Voyage through time and space*

"I'm afraid you can't build this, Dave." Don't listen to the homicidal computer. No sci-fi collection is complete without the space ship Discovery swimming through your display case. This model is definitely not for beginners, but it's incredible detail and adherence to the model from the film makes it well worth the build! **Kit features** detailed propulsion system, screen accurate surface detailing, command sphere with clear window, detailed thrusters, and antenna array plus display stand and concealed metal support rod for the long run between the command module and propulsion unit.

2001-3    MOES9903    Skill Level: 3    Length: 41 in (1041mm)

## MPC® 1/48 Space: 1999 Nuclear Waste Area 2 Diorama

*The perfect accessory for the Eagle Transporter*

"Space: 1999" only ran for two seasons, but its influence on serious sci-fi can still be seen today. It featured Martin Landau and Barbara Bain as marooned researchers searching for a new home. **Kit features** a "plug and play" light kit, 8 lamp stands, 2 moon buggies with cargo, 2 nuclear waste control cones, 2 waste containment platforms, 8 hexagonal storage boxes, 2 lamp post bases, 10 figures, a bonus 1/24 moon buggy with figures and a large decal sheet with full-color paint and decal guide. Requires 4 AA batteries.

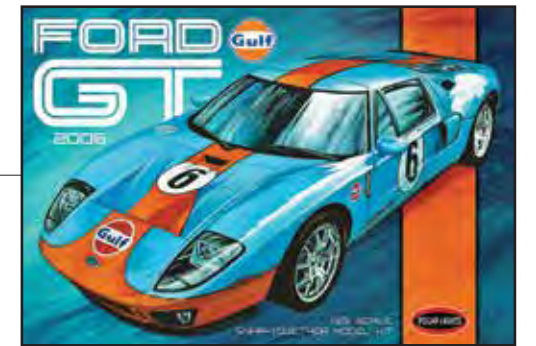
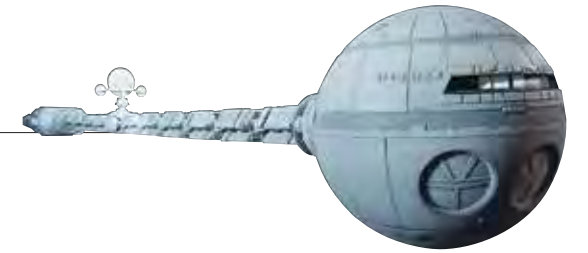
MPC860/06    MPC860

## Polar Lights® 1/25 2006 Ford GT

*Race-winning heritage*

In 2004, Ford released the Ford GT in honor of the historic GT40, which won four consecutive 24 Hours of Le Mans events in the late 1960s. The GT recreated the GT40's classic looks, but added a modern power plant and undercarriage. For the 2006 GT, Ford offered a paint scheme that matched the blue and orange treatment found on the GT40. **Kit features** snap assembly, a detailed suspension, chassis, interior and engine, side panel stripes, a masking template, rubber tires, chrome and clear parts, plus Gulf Oil decals.

POL955/12    PLLS0955    Skill Level: 2



## Just Released

### Artesania Latina 1/32 Sopwith Camel British WWI Fighter

*World War I's high-flying hero*

- Recreate Britain's best biplane with this detailed, easy-to-build plywood kit!
- Includes nameplate; requires assembly and glue



30218 LATY3218  
Total Parts: 52

### NASCAR Stock Car Series – Super III – Release 3

- #88 Dale Earnhardt JR. 2016 Chevy SS, Nationwide
- #24 Jeff Gordon 2015 Chevy SS, Axalta
- #48 Jimmie Johnson 2016 Chevy SS, Lowe's
- #5 Kasey Kahne 2016 Chevy SS, Farmers
- Authentic graphics and new tooling



SC326/48 RDZW0326  
Stock Car Series - Release 3 (12)