

# GREAT NEWS

GREAT PLANES MODEL DISTRIBUTORS

RADIO CONTROL • JULY 2017



[Click for Radio Control](#)

## PLUS:

**The Dromida® KODO FPV** combines convenience and completeness, for the ultimate in first person view flight!  
Pages 4-5

**Futaba® 16SZ** radios are ready for any challenge  
Pages 8-9

**The Duratrax® Li-24** charger is user friendly and compact in size and an ideal charger for modelers using lithium batteries  
Page 21

## DROMIDA

Ready-To-Run 1/18 Scale Electric 4WD  
Monster Truck & Rally Car FPV Packs  
Pages 2 - 3



# GREAT NEWS

GREAT PLANES MODEL DISTRIBUTORS

GENERAL HOBBY • JULY 2017



© Disney/Pixar

## PLUS:

**Estes E2X Launch Sets** help you conquer the sky this summer!  
Page 2

Plastic models for all ages and interests.  
Page 4 - 15

**Latina 1/90 San Francisco II** offers exquisite detail and an outstanding history.  
Page 15



**Disney • Pixar Cars 3 Junior Kits**  
Page 3



[Click for General Hobby](#)



RIDE INSIDE  
WITH FIRST  
PERSON VIEW

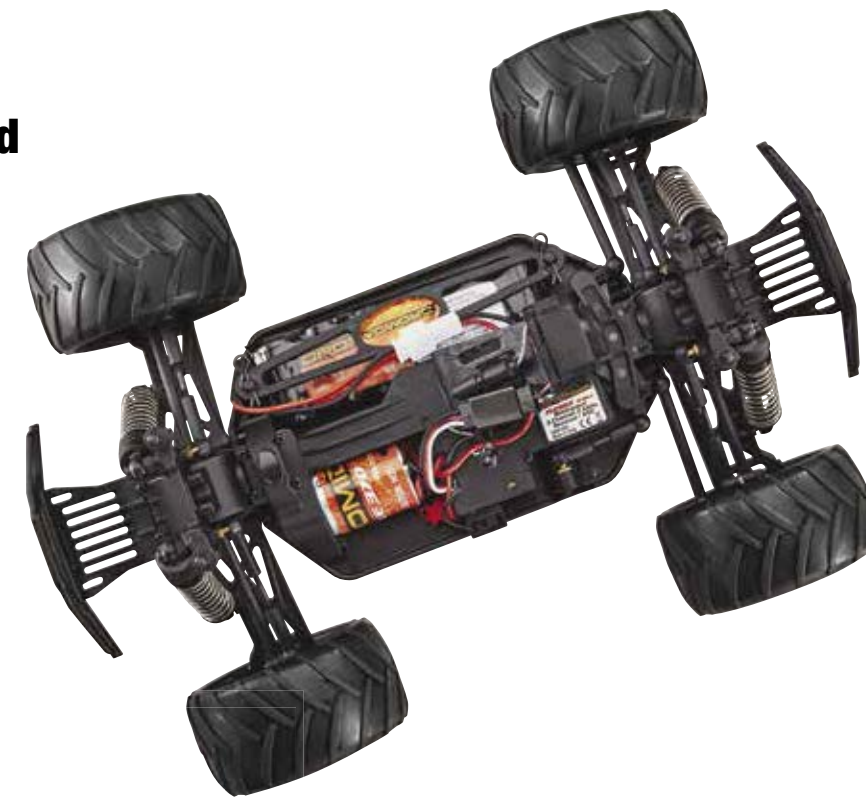


## Ready-To-Run 1/18 Scale Electric 4WD Monster Truck & Rally Car FPV Packs

- FPV Packs come with a Tactic™ FPV monitor and goggles, so you can watch the action from your vehicle's point of view, in real time
- An on-board video camera and 5.8GHz video transmitter are already installed
- Choose between the unstoppable Monster Truck and the asphalt-shredding Rally Car
- Each include a high-capacity 6-cell 1300mAh NiMH battery, USB charger and 4 AA batteries
- Completely assembled and ready to run: nothing to buy, nothing to build, and everything to enjoy!

These vehicles are built for non-stop bashing and racing fun!

- Installed Torque 370 motor
- Rugged, reliable 4WD system
- Waterproof electronics
- Tough gear differentials
- Adjustable Big Bore oil shocks
- High-traction tires
- Front/rear bumpers
- Friction-fighting ball bearings



Each RTR FPV Pack includes Tactic FPV gear — FPV-RM2 5.8GHz LCD monitor, FPV G-1 Goggles, 600TVL FPV camera and 25mW 40-channel, 5-band 5.8GHz video transmitter.

You get all this with your Dromida FPV vehicle!

**DIDC0080 1/18 Scale RTR Electric 4WD Monster Truck FPV Pack**

Length: 10.5 in (266 mm)  
Width: 7.8 in (198 mm)  
Height: 4.6 in (117 mm)  
Requires: nothing!

**DIDC0081 1/18 Scale RTR Electric 4WD Rally Car FPV Pack**

Length: 10.9 in (277 mm)  
Width: 5.1 in (130 mm)  
Height: 4.25 in (108 mm)  
Requires: nothing!

**From the Experts:**

Racing and bashing will never be the same after you've experienced it from the "driver seat"! Dromida's FPV-equipped Monster Truck and Rally Car offer an exciting new perspective on RC, and without having to invest in any extra video gear. These vehicles stand up to extreme driving, and they're ready for action!

**Long story short...**

Drive one and you'll agree: the view from inside your Dromida FPV vehicle never gets old!





# KODO

Ready-to-Fly 106 mm Camera Drone

## FPV



By connecting your smartphone to the goggles you can totally immerse yourself in the action!



With the KODO FPV's Wi-Fi® camera you can enjoy FPV with half the latency of other drones in its class.



Everything you see here is included with your KODO FPV. All you have to supply is your device and the app, which you can download for free.

## SMART, SIMPLE FPV

- This all-in-one pack has all the essential gear you need to experience FPV right out of the box
- The drone is fully assembled and flight-ready, so you can be in the air almost immediately
- Perform flips on command with the push of a button
- Stay airborne longer with the high-capacity LiPo battery and USB fast charger
- For those who want to view the action from the transmitter, the MR200 2.4GHz radio also comes with a smartphone holder and sun shade
- Includes a powerful LiPo battery, USB charger, AA batteries and extra blades



Download free app



Device not included.

Apple and the Apple logo are trademarks of Apple Inc., registered in the U.S. and other countries. App Store is a service mark of Apple Inc. Android™ and Google Play are trademarks of Google Inc.

**DIDE0016 KODO Ready-To-Fly 106 mm Camera Drone FPV Pack**  
**Diagonal:** 106 mm (4.2 in)  
**Weight:** 40 g (1.4 oz)  
**Requires:** Devices for Android or Apple, app (download free from Google Play Store or App Store)  
 FPV requires smartphone and app.

### From the Experts:

The KODO FPV is THE best drone for enjoying First Person View flight for the first time! Just attach your smartphone to either the goggles or the transmitter, connect it to the Wi-Fi camera and download the free app. Then take off and see the world like you've never seen before!

### Long story short...

Now anyone can see what it's like to get a "drone's eye view", because the KODO FPV makes it super-easy!





# 7PX

7PX T-FHSS SR 7-Channel Computer Radio



# INTRODUCING THE "SUPER" SURFACE SYSTEM

- Features the exciting new T-FHSS SR Super Response mode that offers the fastest, most accurate control yet
- Also compatible with T-FHSS, S-FHSS and FASST protocols, so you can select the preferred transmission for each vehicle
- The large, backlit 4.3" LCD touch screen allows for easy viewing
- Full telemetry capability, with data relayed on screen or audibly through the built-in speakers or through headphones (sold separately)
- A R334SBS 2.4GHz diversity receiver, 40-model memory and five programmable mixes are just a few more examples of the 7PX's advanced technology



ABS Braking



Channel Setting



Gyro Mixing



RPM Telemetry Sensor



Battery Voltage Sensor

# Futaba

FUTK4908 7PX T-FHSS SR 7-Channel Computer Radio

### From the Experts:

If you're a serious RC driver, the 7PX was designed with you in mind. It's the first radio with T-FHSS SR "Super Response" protocol, for precise, instant control that can make all the difference on race day. The 7PX is also telemetry compatible, and seven channels allow crawlers and scalers to add all of the extra features they want!

### Long story short...

The 7PX is revolutionizing surface control, with features and flexibility you won't find on any other radio.

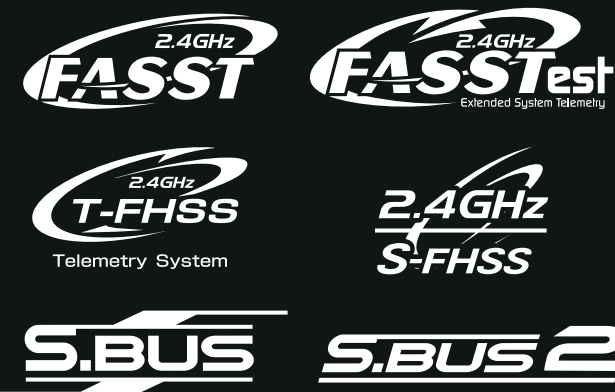
**Futaba**

# 16SZ

16-Channel 2.4GHz FASSTest Computer Radio System

# 16-CHANNEL VERSATILITY, FAMOUS FUTABA RELIABILITY

- Compatible with FASSTest, FASST, T-FHSS and S-FHSS protocols
- Programming is easy and intuitive on the large 4.3" LCD touch screen
- Use the 16SZ to fly airplanes, helis, gliders and drones
- Loaded with the pilot's favorite features, including 30-model memory, 10 programmable mixes, throttle timer and much more
- Keeping your 16SZ current is easy; downloadable software updates are online and free



The high-voltage R7008SB receiver offers you a number of servo and channel choices. Use up to 8 channels with standard PWM outputs, or up to 18 channels (16 proportional + 2 switched) with S.Bus and S.Bus2 outputs.

FUTK9460 16SZA 16-Channel 2.4GHz FASSTest Computer Radio-Air  
FUTK9461 16SZH 16-Channel 2.4GHz FASSTest Computer Radio-Heli

System type	MODEL1 Normal	8.0V
System	Receiver	Single
FASSTest 18CH	Receiver ID	Rx1
FASSTest 12CH		----
FASST MULTI		Link
FASST 7CH	Telemetry	ACT
S-FHSS	D/L interval	1.0sec.
T-FHSS	B.F/S voltage	3.8V

Enjoy quick access to all of the popular Futaba protocols: FASST, FASSTest, S-FHSS and T-FHSS.

### From the Experts:

Every pilot wants to have one radio they can count on to confidently control all of their aircraft, and the 16SZ does just that. It works seamlessly with all of the popular Futaba modulations, and has full telemetry compatibility. Plus, it has advanced features such as a 4.3" LCD touch screen, 30-model memory, a high-voltage S.Bus2 receiver and more.

### Long story short...

**If you want a radio system that can handle any challenge, step up to the 16SZ.**





# HPI'S MOST HOTLY ANTICIPATED CRAWLER IS HERE!

## Venture Toyota FJ Cruiser 4WD Ready-To-Run Crawler

- Ready to take on any off-road challenge, with reinforced steel C-channel chassis rails
- The 35T crawler spec motor and transmission are front-mounted, just like on a full-size truck, to improve climbing ability
- For added weight up front, the steering servo is mounted next to the motor
- A transmission drive ratio of 1.53:1 ensures you'll get up and down most trails and climb difficult inclines
- Drive with confidence knowing that the oil-filled shocks and aggressive-tread tires can handle the most unforgiving terrain



Choose from two colors of the fully licensed replica body, equipped with lots of scale touches such as bumpers, mirrors, functional roof rack, swing-away spare tire mount and 1.9" Rockthorn tires mounted on beadlock-style multi-spoke wheels.

116558 HPID6558 Venture Toyota FJ Cruiser 4WD Crawler RTR-Gunmetal  
 117165 HPID6559 Venture Toyota FJ Cruiser 4WD Crawler RTR-Sandstorm  
**Length:** 20.7 in (527 mm)  
**Width:** 9 in (227 mm)  
**Height w/Roof Rack:** 9.4 in (236 mm)  
**Height w/o Roof Rack:** 8.5 in (217 mm)  
**Wheelbase:** 12.3 in (311 mm)

### From the Experts:

By outfitting a rugged off-road platform with the popular Toyota FJ Cruiser body, HPI has taken crawling to a new level! Performance is a given, thanks to advanced engineering and amazing durability. And the admiring looks from other drivers is a bonus you're sure to enjoy!

### Long story short...

HPI's Venture Toyota FJ Cruiser combines spectacular scale crawling with superior realism!







# HPI RELEASES THE KRAKENS!

## KRAKEN BAJA 5B READY-TO-RUN NITRO CONVERSIONS

- In partnership with Kraken RC, HPI Racing is rolling out two different Ready-To-Run off-roaders fitted with functional modular roll cages
- For fans of the classic dune buggy, the Sidewinder boasts a tube frame design that replicates the latest generation of desert fun machines
- The TSK-b is a true racing buggy styled after competitors in endurance events such as the Baja 1000 in the 'Class 1' division
- Both are equipped with Fuelie K26 nitro pull-start engines that deliver authentic-sounding power and extreme speeds
- A large 700cc fuel tank offers run time of up to 45 minutes

Custom polycarbonate body panels give these rides realistic looks. The Sidewinder is fitted with off-road tires; the TSK-b rolls on HB Rodeo SC tires.

Bring on whatever obstacles you can imagine: 4 mm aluminum monocoque chassis, one-piece rear hubs and heavy-duty suspensions will keep you in the action.

115484 HPID7084 Kraken Baja 5B Sidewinder Sand Rail RTR  
 115485 HPID7085 Kraken Baja 5B TSK-b Class 1 Buggy RTR  
**Length:** 32.2 in (818 mm)  
**Width:** 18.9 in (480 mm)  
**Height:** 10 in (254 mm)  
**Weight:** 23.4 lb (10.6 kg)  
**Wheelbase:** 22.5 in (572 mm)  
**Ground Clearance:** 2.4 in (61 mm)



### From the Experts:

Kraken RC is one of the most prominent aftermarket manufacturers in RC, and tricking out the HPI Baja 5B with their roll cages and body panels gives these already-popular off-roaders even more appeal. You still get all of the durability and performance perks that HPI has to offer — all you have to do is choose the conversion that suits your style!

### Long story short...

Experience the Baja 5B like never before — fully loaded and wrapped in genuine Kraken roll cages!



# jumpshot mt FLUX



## A QUANTUM LEAP FORWARD IN MONSTER TRUCK PERFORMANCE!

### Jumpshot MT FLUX Fuzion Brushless 2WD Ready-To-Run Monster Truck

- The FLUX Fuzion 2700kV brushless motor and LiPo-ready speed control take up the same space as a standard 540-size motor by itself
- Besides being smaller and lighter, the motor/ESC combo is more user-friendly and offers a cleaner installation with fewer wires
- Take on any off-road surface with the Jumpshot's proven tough TVP (Twin Vertical Plate) chassis and durable 2WD drivetrain
- Enjoy effortless control with robust direct steering
- The battery compartment is easy to access, for quick pack changes



Large all-terrain tires grip the surface securely, and they're mounted on 6-spoke chrome wheels.



A double-wishbone suspension, oil-filled shocks and sturdy gear diffs are just a few of the features that give the Jumpshot MT FLUX Fuzion its toughness.

#### From the Experts:

The Jumpshot MT FLUX Fuzion combines a brushless motor and ESC in one compact, high-powered unit. That means an increased power-to-weight ratio, for faster speeds, bigger air — and even more fun! Plus, it comes already assembled so you can be out bashing in no time.

#### Long story short...

Get behind the wheel of the Jumpshot MT and experience the difference FLUX Fuzion technology makes!

116210 HPID6210 Jumpshot MT FLUX Fuzion  
Brushless 2WD Monster Truck RTR  
Length: 15.9 in (406 mm)  
Width: 12.9 in (330 mm)  
Height: 6.6 in (170 mm)  
Wheelbase: 10.5 in (267 mm)





# EXTREME PERFORMANCE, WITH LOOKS TO MATCH!

www.gpdealer.com

www.gpdealer.com

## SAVAGE XS FLUX VAUGHN GITTIN JR. BRUSHLESS 4WD READY-TO-RUN MONSTER TRUCK

- Shaft-driven 4WD provides excellent handling on any surface you can throw at it
- As fast as it is sturdy, with a FLUX 4000kV brushless motor and EMH-35 speed control that produce unmatched speeds of over 65 mph
- The battery box accepts 6-cell NiMH as well as standard LiPo batteries
- Comes with Power Pin tires set off by bright green wheels and springs
- Sized to go where larger monster trucks can't – perfect for backyard bashing!

You'll stand out from everyone else with the custom "geometric" trim scheme made famous by Formula D champion Vaughn Gittin Jr.



This basher still boasts the composite TVP (Twin Vertical Plate) chassis, waterproof electronics and all-metal drivetrain that have made the Savage XS the toughest mini-monster in the world.



### From the Experts:

It's still the same super-durable Savage XS, but this version is tricked out with Vaughn Gittin Jr.'s signature edition colors that give it a one-of-a-kind look. Heads will turn while you're nailing jumps, flips and drift moves with this mean machine...and looking sharp doing it!

### Long story short...

It's the Savage XS FLUX like you've never seen – or driven – before!

115967 HPID5967 Savage XS FLUX Vaughn Gittin Jr. EP  
4WD Monster Truck RTR  
Length: 14.17 in (360 mm)  
Width: 11.02 in (280 mm)  
Height: 6.29 in (160 mm)  
Weight w/o batteries: 4.73 lb (2.15 kg)  
Wheelbase: 8.85 in (225 mm)



NEWPRODUCT

# ONE SYSTEM FOR MULTIPLE MODELS

## TTX660

6-CHANNEL 2.4GHZ SLT COMPUTER RADIO

- Choose from dedicated menus for airplanes, helicopters AND drones
- Programming is a breeze, and memory for 30 models is a real bonus
- The large graphing LCD screen has adjustable contrast and blue backlighting for easy viewing
- Compatible with all SLT receivers and Tx-R aircraft



Two sliding levers and a proportional dial are ideal for precise control of flaps and FPV cameras.

TACJ2660 TTX660 6-Channel Computer Aircraft Radio

# TACTIC™



### From the Experts:

You may have a lot of planes, helis and even drones to choose from for your flying adventures, but at least choosing a radio is simple. That's because the TTX660 can fly them all, and fly them well. When you combine that kind of versatility with its advanced functionality at a budget-friendly price, you have a radio that's an exceptional value.

### Long story short...

Now you can fly almost any type of RC aircraft with just one radio: the TTX660 from Tactic.

NEWPRODUCT

# THE RIGHT RADIO TO START OUT WITH

## TTX200

2-CHANNEL SLT RADIO

- Sized to take up less room in a vehicle carrying case
- Light in weight and very comfortable to hold
- Setting the TTX200's controls is as easy as pushing a button
- Used four AA batteries, located in the handle
- Features such as the 3-channel micro receiver and foam grip wheel add even more value



The included TR325 micro 3-channel receiver is small enough to fit in the smallest chassis spaces.

TACJ0200 TTX200 2-Channel 2.4GHz Surface Radio

# TACTIC™

### From the Experts:

For anyone just getting into racing and bashing, the TTX200 represents the best radio option. It's easy to transport, easy to set up, and has lots of great features that beginners will appreciate. And you get all this — plus a quality 3-channel micro receiver — at a super-affordable price.

### Long story short...

The TTX200 is perfect for easing into RC and sharpening driving skills.



# STREAMLINED 6-CHANNEL CONTROL

## 6L Sport

6-Channel Sport T-FHSS 2.4GHz Transmitter



- Enjoy Futaba quality in an entry-level 6-channel system, but without costly extras that are often not needed with most aircraft
- Reversing switches ensure the controls all work in the correct directions
- Use the included V-tail and elevon mixes to fly more advanced models
- The antenna is built in for a sleeker appearance
- Comes with the matching R3106GF receiver



Operate flaps, retracts or other auxiliary functions with this two-position switch and variable rate rotary dial.

### From the Experts:

It's like getting the best of both worlds: legendary Futaba engineering, without all the bells and whistles. If you're looking to step up from your current RTF transmitter to something a little more sophisticated — but without a major price jump — the 6L is an ideal choice.

### Long story short...

The 6L is everything you need for superior six-channel control and nothing you don't.

FUTK5000 6L 6-Channel Sport T-FHSS 2.4GHz Transmitter

# Futaba

## A "MUST-HAVE" FOR LITHIUM CHARGING AND BALANCING

Li-24 2-4S LiPo/LiFe AC Balancing Charger

- Compact size and 100-240V power make it perfect for the workbench, track or field
- Very user-friendly, with simple controls, LEDs and virtually hands-free operation
- Uses a CC/CV charge method with voltages customized for LiPo/LiFe batteries
- Built-in balancing function ensures all cells are charged to maximum capacity
- Includes a Star Plug® compatible with the RC industry's most commonly used polarized power plug



DTXP4630 Li-24 2-4S LiPo/LiFe AC Balancing Charger  
U.S. Patent D749,046 and Patent Pending

### Long story short...

The value-packed Li-24 is the ideal entry-level charger for modelers using lithium batteries.



## EXTREME OFF-ROADING...SIX-WHEEL STYLE!

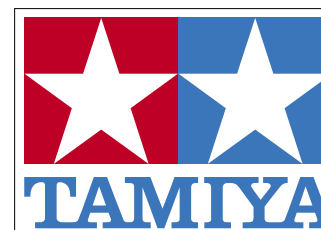
Konghead 6x6 G6-01 Monster Truck Kit

- NO surface is too tough for the 6-wheel drive Konghead with GF-01 monocoque chassis
- Powerful enough to take on inclines of up to 40°
- The clear polycarbonate body is inspired by the popular Bullhead monster truck, and is set off by metal-plated air cleaners and exhausts
- Rolls on aggressive monster tires mounted on chrome-plated deep-dish wheels
- Comes with front wheel steering — upgrade to four-wheel steering with a 4WS-compatible radio system (sold separately)

Length: 16.5 in (420 mm)  
Width: 10.6 in (270 mm)  
Height: 11 in (280 mm)  
Requires: 2-channel radio, 6-cell 7.2V NiMH battery and compatible charger



58646 TAMC8646 1/18 Scale Konghead 6x6 G6-01 Monster Truck Kit



### Long story short...

Rule the RC arena with the brute force of the Konghead 6x6 monster truck!



# THE PUREBRED RACER, REDEFINED!

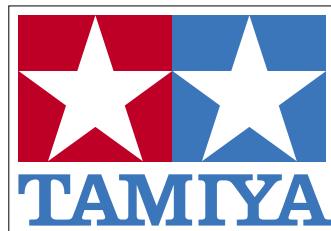
## Top Force 2017 4WD Electric Buggy Kit

- A modern update on the classic buggy that has been a favorite of off-road fans since 1991
- This newest version features square spike tires for superior traction
- An ultra-low center of gravity and aerodynamic body are real performance advantages
- The Fiberglass Reinforced Plastic (FRP) double-deck chassis stands up to aggressive driving
- Four-wheel shaft drive provides efficient power transfer and confident handling



47350 TAMC7350 1/10 Scale Top Force 2017 4WD Electric Buggy Kit

Length: 15.7 in (400 mm)  
Requires: 2-channel radio with steering servo, 6-cell flat NiMH battery with standard connector and compatible charger



**Long story short...**

*The Top Force buggy is back, and better than ever!*

# SLEEK RALLY REALISM!

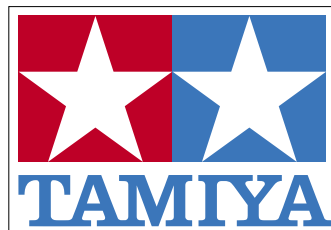
## Subaru WRX STI TT-02 4WD On-Road Kit

- Recreates the Subaru WRX racer that scored an impressive victory in the 2016 Nürburgring 24-hour endurance event
- The TT-02 ABS resin bathtub chassis is a proven platform that's ideal for new kit builders
- Enjoy plentiful power from the Torque-Tuned 540 motor and brushless-compatible ESC
- A fully independent double wishbone suspension and four-wheel shaft drive make for confident handling
- Treaded rubber tires with foam inserts provide precision performance for small-scale rally racing



58645 TAMC8645 1/10 Scale Subaru WRX STI TT-02 4WD On-Road Kit

Length: 18.6 in (472 mm)  
Wheelbase: 17.4 in (441 mm)  
Requires: 2-channel radio with high-speed steering servo, 6-cell 7.2V NiMH battery and compatible charger



**Long story short...**

*Experience real rally car excitement with Tamiya's Subaru WRX kit!*

# Just Released

## THE LEGENDARY STREET MACHINE

### Ferrari F12tdf TT-02 4WD Kit



58644 TAMC8644 1/10 Scale Ferrari F12tdf TT-02 4WD Kit

Length: 18.6 in (472 mm)  
Wheelbase: 17.4 in (441 mm)  
Requires: 2-channel radio with high-speed steering servo, 6-cell 7.2V NiMH battery and compatible charger

- Pays tribute to the classic racing machine that captured the Tour de France automotive competition seven times between 1956 and 1964
- The Torque-Tuned 540 motor and brushless-compatible ESC deliver plentiful power
- Ideal for the new kit builder, the TT-02 ABS resin bathtub chassis is a proven platform
- Drive confidently with this car's fully independent double wishbone suspension and four-wheel shaft drive
- Radial tires with silver 10-spoke wheels add to the realism

**Long story short...**

*Rule the road with Tamiya's take on the famous Ferrari racer!*

## CASTLE® CREATIONS MAMBA X 25.2V WP ESC COMBOS

*Unstoppable power and total control for crawlers!*



010-0155-08 CSEC5508 Mamba X 25.2V WP ESC + 1406-1900kV Combo

Also available:  
010-0155-09 CSEC5509 Mamba X 25.2V WP ESC + 1406-2200kV Combo  
010-0155-10 CSEC5510 Mamba X 25.2V WP ESC + 1406-2850kV Combo  
010-0155-11 CSEC5511 Mamba X 25.2V WP ESC + 1406-3800kV Combo

- Castle has paired the high power, reliable Mamba X ESC with sensored low-kV 1406 motors, creating ideal combos for low-speed crawling or trail running
- A programmable Auxiliary Wire on the Mamba X lets you make "on-the-go" adjustments to settings such as torque control and max throttle
- The Mamba X is telemetry ready, allowing you to monitor data such as ESC temperature, voltages and RPM in real time
- Can also be used in more aggressive setups for rock racing and extended hill climbing

## CASTLE® CREATIONS 1/8 MONSTER V2 WP ESC/2200kV MOTOR COMBOS

*Castle's newest combos for efficient, reliable power!*

- Motor is sensor-ready, and can run sensored when paired with a sensor-capable ESC such as the Mamba Monster X\*
- Designed to allow modelers to quickly replace damaged motor wires
- Rebuildable, with replacement parts available soon



010-0108-03 CSEC0803 1/8 Monster V2 WP ESC + 2200kV Motor Combo

Also available:  
010-0108-04 CSEC0804 1/8 Monster V2 WP ESC + 2650kV Combo



# E2X LAUNCH SETS TO CLAIM THE SKY!

## Get To Liftoff Fast!

### Flicker™ Launch Set

**Ready to go way out!**

Length: 19.2 in. (48.8 cm)  
Diameter: 1.33 in. (34 mm)  
Weight: 3.2 oz (90.7 g)  
Max. Altitude: 650 ft. (198 m)  
Features: Plastic fins, self-stick decals, LEDs in nose cone, 15 in. (38 cm) parachute recovery, Electron Beam Launch Controller, and Porta-Pad II Launch Pad.

Recommended Engines: B6-4 (First Flight), C6-5

Requires: 4 AA 1.5 V Alkaline Batteries, engines, starters, and recovery wadding. ESTT1437



Easy to Assemble

E2X

E2X sets are easy to assemble with no paint or special tools needed. All parts are colored and easy to put together. Just glue together, apply decals, attach the recovery system and, in one hour or less, you're ready to blast off!

### Javelin™ Launch Set

**Pierce the sky!**

Length: 16.4 in. (41.6 cm)  
Diameter: .98 in. (25 mm)  
Weight: 1.4 oz (39.7 g)  
Max. Altitude: 600 ft. (183 m)  
Features: Plastic fins, self-stick decals, foam glider, 12 in. (30.5 cm) parachute recovery, Electron Beam Launch Controller, and Porta-Pad II Launch Pad.

Recommended Engines: A8-3 (First Flight), B6-4  
Requires: 4 AA 1.5 V Alkaline Batteries, engines, starters, and recovery wadding. ESTT1436



### Whirlybird™ Launch Set

**Spinning in style!**

Length: 21.2 in. (53.8 cm)  
Diameter: 1.35 in. (34 mm)  
Weight: 2.9 oz (82.2 g)  
Max Altitude: 650 ft. (198 m)  
Features: Plastic fins, self-stick decals, heli-blade nose cone recovery, 12 in. (30.5 cm) rocket parachute recovery.

Recommended Engines: C6-5 (First Flight)  
Requires: Engines, starters, and recovery wadding. ESTT1446



### From the Experts:

With launch pads and controllers already included, you've got virtually everything you need to take to the sky with E2X Launch Sets.

### Long story short...

Easy to build for high-flying fun, E2X Launch Sets will help you conquer the sky this summer!



# ACCELERATE TO FUN!

## Take your favorite Disney • Pixar Cars 3 characters on a non-stop imagination adventure!

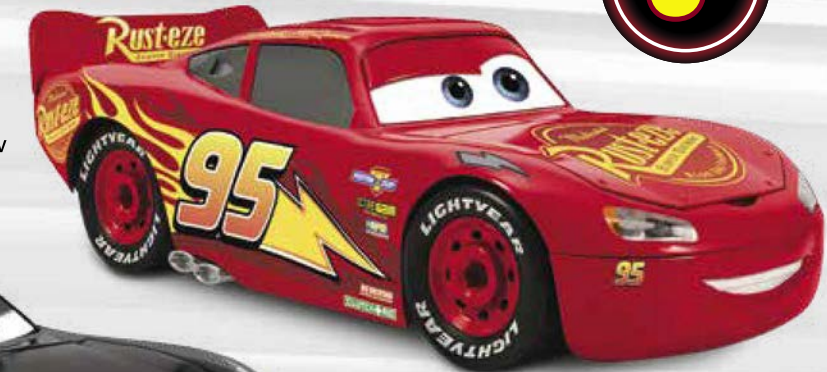


- Designed durable so it can be assembled and disassembled over and over
- Ergonomic screwdriver designed for small hands
- Easy touch light up headlights for racing fun day or night
- Easy touch sound activation brings race sounds from the movie to life
- Lots of "Mix and Match" eye and mouth expressions allow your child to customize their car
- Hours of creative, hands-on fun await!

RMXH1502  
Jackson Storm



RMXH1500  
Lightning McQueen



RMXH1501  
Cruz Ramirez

© Disney/Pixar

### From the Experts:

Give your little one a future full of fun with Revell Jr. Kits. They're easy to assemble, fun to play with, and perfect for growing kids 5+.

### Long story short...

Fun awaits! Have your little mechanic build their Disney • Pixar Cars 3 kit for hours of fun assembling, disassembling, customizing, and running their favorite vehicles from their favorite movie!







**1/24 #4 KEVIN HARVICK JIMMY JOHN'S FORD FUSION**  
Freaky fast #4

No, it's not a "Turkey Tom", it's Kevin Harvick's ride. Kevin grew up in Bakersfield, California and started racing at an early age. Go-karts at first, but by 1995 he had started his career in NASCAR®. Today, he has 35 NASCAR Premier Series wins and 46 NASCAR Xfinity Series wins to his name. Since 2014, he's been with Stewart-Haas Racing team. He competes in the NASCAR Premier Series, driving his distinctly recognizable #4 Ford Fusion. **Kit features** seated racing driver figure, pre-painted black window edges, full engine, interior, and trunk detail, plus chrome plated parts and more.

85-4218 RMXS4218 Total Parts: 90 Skill Level: 5 Length: 8.2 in (208mm)  
Width: 3.1 in (78mm) Height: 2.3 in (59mm)



**1/25 '64 FORD FAIRLANE THUNDERBOLT 2 N 1**  
Faster than lightning

New rules were established in 1964 for the drag racing Super Stock class and Dick Brannan, head of Ford's Drag Racing division, wasted no time developing the Thunderbolt to dominate the class. He started with a lighter Fairlane—a common marque in the Ford line—and then reduced the weight even more and added a powerful 427 c.i. engine into it. The result was an incredible car that could sweep the class. **Kit features** three wheel style choices, two hood style choices, 4-speed or automatic transmission, chrome plated parts, and soft black tires.

85-4408 RMXS4408 Total Parts: 129 Skill Level: 5 Length: 7.8 in (198mm)  
Width: 2.9 in (74mm) Height: 2.3 in (59mm)



**1/25 CUSTOM CADILLAC® ELDORADO™**  
Custom conquers all

One of the first projects designed and completed by Chip Foose before he established his own shop, the "Eldorod" is based on a 1948 Cadillac Eldorado, extensively modified and armed with a 502 cubic inch Big Block Chevy® engine. The whole frame was handmade and incorporates some suspension parts from a C4 Corvette®. It's one of the baddest rides on the road. Now it's all yours. **Kit features** detailed, fuel-injected Chevy Big Block V-8, removable custom top, solid axles, redline wheels, chrome parts, and soft black tires.

85-4435 RMXS4435 Total Parts: 94 Skill Level: 4 Length: 8.1 in (206mm)  
Width: 3.1 in (79mm) Height: 2 in (51mm)



**1/72 SEVEN YEARS WAR AUSTRIAN DRAGOONS/  
PRUSSIAN HUSSARS**  
Ride to victory

During the Seven Years War, cavalry was still the decisive force on the battlefield. Their mobility and ferocious striking power could rout all but the most determined infantry. Dragoons were primarily mounted infantry who could maneuver and strike at unwieldy infantry columns with impunity. Hussars were primarily light skirmishers, harassers, and anti-cavalry forces. Both units carried muskets, but the decisive weapon was the saber and the horse. **Kit features** armed soldiers in different poses, ensign trooper, posed horses, drummer, and trumpeter

02453 RVLS2453 Total Parts: 32 figures, 66 parts Skill Level: 4

**1/48 MIG-25 RBT**  
Cold War combatant

Still the highest flying and fastest of all armed military aircraft nearly fifty years after it was designed, the MiG-25 Foxbat was a source of great consternation amongst NATO countries at the height of the Cold War. Satellite photos showed extremely large wing structure. NATO leaders feared the aircraft was a new, highly maneuverable air superiority fighter. Fortunately, a defector flew a MiG-25 into Japan where its true role (interceptor) was discovered. **Kit features** detailed cockpit with instrument panel, detailed jet nozzles and undercarriage, open/closed cockpit canopy, RBT nose section with camera window, auxiliary fuel tank, and two sets of decals.

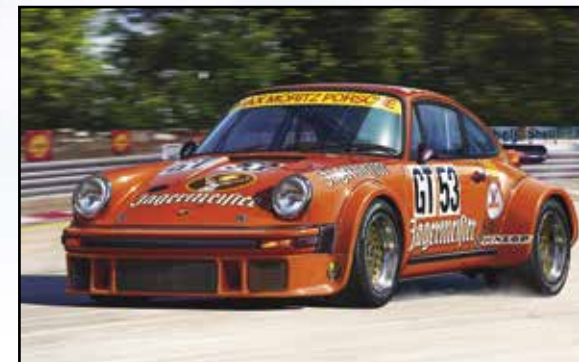
03931 RVLS3931 Total Parts: 166 Skill Level: 5 Length: 18.4 in (467mm)  
Width: 11.1 in (281mm)



**1/24 PORSCHE 934 RSR JÄGERMEISTER**  
Fast in any color

Forty years after the first Tamiya Porsche 934 hit the markets, the tradition is still going strong. This year's 934 features an inspiring and distinctive Jägermeister livery that's so vivid, it's intoxicating. Please operate this Porsche responsibly. Kits of superior awesomeness have been known to result in periods of prolonged happiness. If your smile lasts longer than four hours, we've done our job right. **Kit features** multi-part body, opening hoods, rotating wheels, and full decals for the Max-Moritz Racing Team.

07031 RVLS7031 Total Parts: 104 Skill Level: 3 Length: 7 in (179mm)



**1/32 CORVETTE C3**  
Truly moving

With its intentionally and exceptionally non-traditional look, the C3 is a stylized work of art. For decades, it was one of the most recognizable new cars on the market and, since production stopped in 1983, it's rapidly becoming a collector's item. Many of the type came with exceptionally high horsepower engines capable of literally smoking the tires right off the wheels. Get your vintage Vette today! **Kit features** single-piece, fully-detailed body, rotating wheels, and full decals.

07684 RVLS7684 Total Parts: 18 Skill Level: 3 Length: 5.7 in (145mm)



**1/8 US POLICE MOTORBIKE**  
Maximum mobility

Motorcycles can go where cars can't, making them perfect for police in urban areas. Most frequently you will see them escorting motorcades full of high-profile politicians and heads of state. If you see one, get out of the way. Unless it's this model, then it's deserving of pride of place on your display shelf. **Kit features** detailed two cylinder engine, operating front fork, warning lights, radio intercom and antenna, chrome parts including handlebars, wheel rims, cylinder head covers, and exhaust pipes, plus decals for a US Police motorcycle.

07915 RVLS7915 Total Parts: 165 Skill Level: 5 Length: 11.9 in (302mm)







### 1/700 JAPANESE NAVY BATTLESHIP MIKASA FULL HULL

Bound for Yokohama

Few ships are as storied as the legendary Mikasa. This pre-dreadnought battleship took on the Russian fleet the Battle of Tsushima. This clash shocked the whole world and revealed Japan as the Pacific's dominant naval force. There's such reverence for this vessel in naval circles that it is still on display over 100 years after it was commissioned. This limited edition **kit features** a metal name plate, wooden display stand parts and markings that commemorate the Mikasa's completion in 1902.

30044 (Limited Edition) HSGS0044 Total Parts: 210 Skill Level: 3  
Length: 7.4 in (189 mm) Width: 1.8 in (45mm)



### 1/24 SUZUKI JIMNY (JA11-1)

Jump in!

In its extremely wide variety of models, the Suzuki Jimny has been offroading since the 1970s. Originally equipped with extremely small engines, the power of the type has grown considerably while the bodies have stayed similar. By the JA11 version, the Jimny had matured into a full-fledged off-roader with a robust engine, quality construction, and a body style that hearkened back to the originals while conveying modern appeal. **Kit features** new front grill, side mirror, and other parts plus full decals.

20301 HSGS0301 Total Parts: 136 Skill Level: 3 Length: 5.7 in (145mm)  
Width: 2.6 in (67mm)



### 1/24 FUJITSU TOM'S COROLLA AE101

Break from the everyday

Corollas are everywhere. With more than forty million sold, they are totally ubiquitous on the road. However, the AE101 is a considerably rarer breed. For Team Toms, it took on the field of contenders in the 1992 Japan Touring Car Championship. There, it stunned with pure competitive spirit and endurance. This limited edition **kit features** a Corolla AE101 with new suspension parts plus two sets of decals.

20302 (Limited Edition) HSGS0302 Total Parts: 58 Skill Level: 3  
Length: 7 in (178mm) Width: 2.8 in (72mm)



### 1/72 JUNKERS JU 88C-6 "ZESTÖRER"

A Luftwaffe legend

The Luftwaffe had many impressive fighter-bombers in its arsenal throughout World War II. Without question, the Junkers Ju 88 was one of the best. 900 C-6s were produced by Junkers in all. Major differences included belt-fed machine guns in place of drum-fed machine guns, along with more powerful engines than previous variants. Many C-6 aircraft were adapted for use as a night fighter, adding airborne intercept radar and twin "Schräge-Musik" 20 mm cannons. This limited edition **kit features** one marking option: 1. Luftwaffe 4./KG 76, Code: F1 + XM.

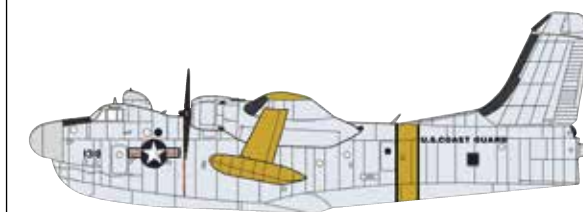
02245 (Limited Edition) HSGS2245 Total Parts: 137 Skill Level: 3  
Length: 8 in (203 mm) Width: 11 in (279mm)

### 1/72 P5M-2G MARLIN "COAST GUARD"

Ready to rescue

While the P5M Marlin flying boat was originally intended for naval patrols, the United States Coast Guard relied on the P5M-2G variant for air-sea rescues. This version was equipped with a T-tail that protected tail surfaces from excess spray, as well as an AN/ASQ-8 MAD boom to detect submarines. However, Marlins were deemed too difficult to maintain, so the Coast Guard eventually transferred their fleet over to the United States Navy. This limited edition **kit features** one marking option for the United States Coast Guard.

02246 (Limited Edition) HSGS2246 Total Parts: 134 Skill Level: 3  
Length: 16.9 in (430 mm) Width: 19.7 in (500mm)



### 1/72 MI-35 HIND "CZECH AIR FORCE"

Czech this out!

The Mi-24 Hind was the first and only assault helicopter that coupled incredible striking power with substantial troop carrying capability. It was also a remarkably agile aircraft—capable of executing flips, rolls, and other maneuvers that it was never designed for. After the collapse of the Soviet Union, many materials of war were left in the former USSR member states. These Czech Air Force Hinds are modernized and ready for war. This limited edition **kit features** new chaff flare dispenser parts and vivid decals.

02247 (Limited Edition) HSGS2247 Total Parts: 160 Skill Level: 3  
Length: 9.7 in (246 mm) Width: 9.3 in (236mm)



### 1/350 IJN AIRCRAFT CARRIER HIYO

Shape up and ship out

Hiyo showed up just barely too late for Midway, fought in the Guadalcanal campaign but missed the Battle of the Santa Cruz Islands due to a generator fire, and exploded at the Battle of the Philippine Sea. In between, she went through numerous small battles, ran gauntlets of US submarines, and was constantly having to load new, ever-more-green air wings. This limited edition **kit features** new airplane parts plus decals for Aircraft Carriers Hiyo and Junyo. Photo etched parts set available separately (HSGS4097).

04096 (Limited Edition) HSGS4096 Total Parts: 639 Skill Level: 3  
Length: 24.7 in (628mm) Width: 6.7 in (169mm)

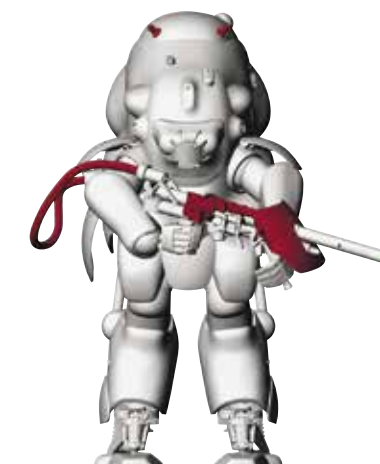


### 1/20 MASCHINEN KRIEGER MOONTYPE MK44H PROTOTYPE

A Maschinen Krieger must-have

The sci-fi series Maschinen Krieger was created by artist Kow Yokoyama in the early 1980s, first appearing in the popular magazine Hobby Japan. The series was inspired by armor and aircraft from both World Wars, as well as several iconic science fiction films. Today, Maschinen Krieger continues to have a devoted cult following, thanks to its celebrated return to Hobby Japan magazine in 2009. This limited edition **kit features** one marking option.

64112 (Limited Edition) HSGS4112 Total Parts: 189 Skill Level: 3  
Length: 5.4 in (138 mm) Width: 4.4 in (113mm)





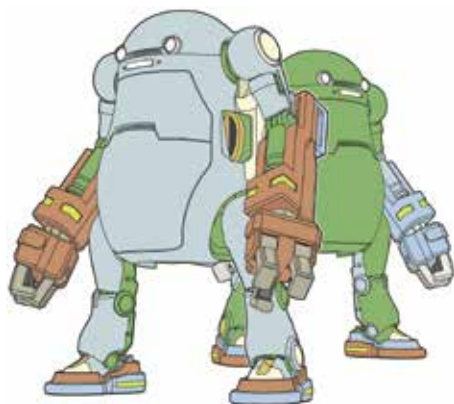
www.gpdealer.com

www.gpdealer.com


**1/72 AREA-88 KFIR C2 SAKI VASHTAHL**  
 Dog-toothed and determined

Kaoru Shintani's action-packed manga, Area-88, debuted in 1979. It was an instant hit, exciting readers with the exploits of Shin Kazama, a mercenary fighter pilot stationed at a top-secret air base called Area-88. The base's commander is former Prince Saki Vashtahl, who flies a Kfir C2 that sports dog-toothed leading edges on the wings—just like the full-size version. This limited edition **kit features** one marking option based on the popular Japanese anime and manga "Area-88." 1. Kingdom of Arslan Air Force, Area-88, Pilot: Saki Vashtahl.

64751 (Limited Edition) HSGS4751 Total Parts: 54 Skill Level: 3  
 Length: 8.5 in (216 mm) Width: 4.5 in (114mm)


**1/35 MECHATROWEGO NO.6 POWER ARM (2KITS)**  
 Power suits to the people!

Direct from Japan's Chubu Mechatronics, MechatroWeGo mechatrobots are taking the world by storm! These pint-size transports are perfect for carrying kids to school, soccer practice and everywhere else in between. Mechatrobots have made carpooling obsolete, leaving parents with more time to take care of everyday errands. The only thing missing from mechatrobots? An alarm that gets the kids home in time for dinner! These-bots come with power arms for serious heavy lifting! This limited edition **kit combo features** molded-in-color parts, two figures, moving joints, and power arms.

64752 (Limited Edition) HSGS4752 (2 Kits) Total Parts: 86 x 2 Skill Level: 3  
 Width: 2.7 in (69mm)


**1/35 HITACHI DOUBLE ARM MACHINE CRUSHER/CUTTER**  
 Double duty done right

With both a grabber/crusher and a snipper arm, the Astaco Neo is one of the more versatile construction tools ever designed. This **kit features** a finely detailed cockpit interior, mesh sheet for the cockpit front screen, soft tracks and cables, moveable arms, moveable machine body, molded in color for easy completion with no paint required.

52161 HSGS5261 Total Parts: 188 Skill Level: 3 Length: 8.3 in (211 mm) Width: 3.1 in (78mm)


**1/24 VOLKSWAGEN TYPE 2 DELIVERY VAN "EGG GIRLS SUMMER 2017"**  
 Meet the girls of summer

Introduced in 1950, the Volkswagen Type 2 is considered the forerunner of today's cargo and passenger vans. However, it's most famously associated with the counterculture movements of the late 1960s and early 1970s, who nicknamed the Type 2 the "hippie-mobile," the "hippie bus" and the "hippie van." Today, the vehicle remains popular with custom builders who still appreciate the Type 2's signature styling. This limited edition **kit features** a special wrapping that sports Hasegawa egg plane girls, just in time for summer 2017.

52162 (Limited Edition) HSGS5262 Total Parts: 70 Skill Level: 3  
 Length: 7.1 in (180 mm) Width: 2.8 in (72mm)

**1/48 KAWASAKI KI61-1 & KI100-1 & METAL FIGURE**  
 Hero of the 244th Sentai

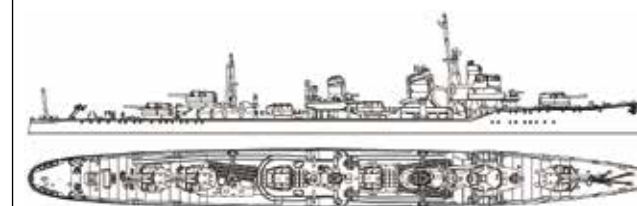
Major Teruhiko Kobayashi has the distinction of being the JAAF's youngest Sentai commander. Kobayashi's impressive combat performance made him an honored recipient of the Bukōchōshō, the "Badge for Military Merit." This limited edition **combo features** one Ki61-I kit with two marking options: 1. JAAF 244th FR Capt. Teruhiko Kobayashi, Blue-24, Chofu AF, March 1945; 2. JAAF 244th FR Capt. Teruhiko Kobayashi, Blue-62, April 1945 and one Ki100-I kit with one marking option: 1. JAAF 244th FR, Maj. Teruhiko Kobayashi, 1945. Includes parts for a 1/32 metal pilot figure.

07454 (Includes 2 Kits) HSGS7454 (Limited Edition) Total Parts: (Per Kit): 64 & 59 & 4  
 Skill Level: 3 Length: (Both): 7.3 in (186 mm) Width: (Both): 9.8 in (250mm)


**1/700 JAPANESE NAVY DESTROYER HAYANAMI**  
 Battle stations!

Hayanami and lots of other Japanese destroyers were relegated to running troops and protecting convoys for much of the war. They were armed with some of the best torpedoes ever invented to date—the Long Lance torpedo—but were pressed into service ferrying Army troops to the island battles that dominated the Pacific War. Once America changed its standing orders for submarines from evade destroyers to destroy them, Hayanami feel prey to USS Harder—a highly decorated sub. This limited edition kits features new parts and a waterline hull.

49462 (Limited Edition) HSGS9462 Total Parts: 91 Skill Level: 3  
 Length: 6.7 in (171 mm) Width: 0.7 in (17mm)


**1/72 HARRIER GR.3 FALKLANDS WAR**  
 Fighting for empire

Argentina had long claimed (and still does claim) the Falkland Islands despite their status as a British Crown Colony. On April 2, 1982, Argentine forces rolled in and took the virtually undefended islands for themselves. They didn't think Britain would try to get it back. The Harrier GR.3 proved them wrong. Only fourteen of this type and a few dozen Sea Harriers were available to Britain against the entire Argentine Air Force, but they definitely made their presence known. Today, the Falklands are back in British hands. **Kit features** detailed parts and full instructions.

1401 ITAS1401 Total Parts: 81 Skill Level: 3 Length: 7.7 in (195mm)  
 Width: 4.2 in (107mm)


**1/48 HAWKER HUNTER F MK. 6/9**  
 Flying since '54

Hawker Hunters were introduced in the fifties, giving the Royal Air Force a fast, agile, jet-powered fighter interceptor capable of confronting the likes of the F-86 and Mig-15. It was one of Britain's first swept wing jets and it was popular the world over for its speed and agility. In fact, its agility is so incredible that it's been used as the aircraft of choice for several display teams: the "Black Arrows", "Blue Diamonds", "Diables Rouges", and "Patrouille Suisse". **Kit features** decals for many aerobatic teams plus full instructions.

2772 ITAS2772 Total Parts: 179 Skill Level: 3 Length: 11.5 in (292mm)





www.gpdealer.com



### 1/24 SCANIA R730 STREAMLINE "CHIMERA"

Legendary mechanical beast

Scania R Series tractors are powered by V8s and designed to carry out some of the world's most demanding heavy hauling tasks. They are sturdy, efficient, and well loved by their owners. They give a huge road view and are frequently decorated up as show trucks with extraordinary exterior styling. This truck is a racer known as "Chimera", built by SVEMPAS AB. **Kit features** a super decal sheet, chromed adhesive, and full instructions.

3930 ITAS3930 Total Parts: 295 Skill Level: 5 Length: 9.7 in (247mm)

### 1/720 USS CARL VINSON CVN-70 SUPER CARRIER

Strength from the sea

Imagine a floating arsenal loaded with dozens of state-of-the-art aircraft, millions of dollars in missiles and smart bombs, plus, over six thousand highly trained crewmen. Put a nuclear power plant aboard that can power it to anywhere at over 30 knots all day, every day, for decades. Imagine that it's a floating city complete with restaurants, a hospital, and more. Make it over 1,000 feet long, over 250 feet wide. Imagine it weighs in at over 100,000 long tons. Add it all up, and you'll have a vague approximation of the might of the USS Carl Vinson. **Kit features** both a full hull and a water plate for a waterline kit plus full decals and instructions.

5506 ITAS5506 Total Parts: 207 Skill Level: 2 Length: 17.6 in (447mm)

### 1/56 JOSEPH STALIN IS-2 TANK WITH DRIVER

Big tank, big success!

Designed with heavier, better-positioned armor than the IS-1, the IS-2 was significantly better equipped for an offensive war than its comparatively unwieldy predecessor. Plus, it was designed to give the Red Army maximum bang for their buck... literally. A separate-loading 122mm gun was mounted on the tank. This incredibly massive gun fired AP shells that could punch through a Tiger's plate at long ranges and HE shells that, anecdotally, could knock out German tanks through sheer explosive action. **Kit features** five sets of late-war decals plus a driver and full instructions.

5764 ITAS5764 Total Parts: 77 Skill Level: 2 Length: 7.1 in (180mm)

### 1/35 M36B1 TANK DESTROYER

Panther killer

Sherman tanks simply couldn't take on German Panthers or Tigers with much hope of survival. They weren't designed for that, and German tank designs had outstripped American ones. Fortunately, America had, by 1944, the M36. With a 90mm gun in an open-topped turret and based on a Sherman chassis, the M36 was a light, fast, heavily armed predator. **Kit features** three sets of decals, glueable tracks, and full instructions.

6538 ITAS6538 Total Parts: 190 Skill Level: 4 Length: 8.4 in (213mm)

### AMT 1/25 KENWORTH W925 MOVIN' ON SEMI TRACTOR

Do it like Pruitt

Though it was only on air for two seasons, "Movin' On" profoundly seeped in to the burgeoning trucker culture in the seventies and eighties and can still be heard on the odd CB today. How can you have a TV show from the inside of a semi? Well, Pruitt and Converse pulled it off for 44 whole episodes. Their Kenworth W925 was a real working machine.

AMT1021/06 AMTS1021

### AMT 1/20 1993 NISSAN HARDBODY 4X4 PICK-UP

The worker's truck

Much in contrast to the sleekly styled Nissans of today, the Nissan Hardbody was a marvel of no-frills functionality. It was a little truck, a compact, but it was there to get the job done. They were comparatively low, light, and narrow, but their tough engines and four wheel drive let them pull outside their weight class. Plus, they were perfect for the modified racing truck community. **Kit features** opening hood, detailed engine, chassis, and interior, optional roll bar, tailgate net, and more.

AMT1031/12 AMTS1031 Skill Level: 2

### AMT WHITE FREIGHTLINER 2-IN-1 SC/DD CABOVER 75TH ANNIVERSARY

75 years of heavy hauling!

Celebrate the 75th Anniversary of White Freightliner! This special release includes all the parts for the modeler to build it with single drive/day cab, OR dual drive/sleeper cab! This model exudes what it means to be Retro Deluxe, with parts, options, and decals never before offered in any release of the kit! This super-detailed semi sensation will come in spectacular 75th anniversary packaging with new retro-style illustrations from veteran AMT artist, Don Greer! Don't miss it! **Kit features** day/sleeper options, tilting cab, detailed Cummins Diesel engine, all new decal art, and special 75th anniversary packaging.

AMT1046/06 AMTS1046 Total Parts: 250 Skill Level: 2

### AMT 1/25 COCA COLA 1970 FORD LOUISVILLE SHORT HAULER

"It's the real thing"

What's better than the ice cold, refreshing taste of Coca Cola? How about the angelic chorus that's likely to appear when you open the gleaming metal doors into a refrigerated wonderland of a truck, filled with crate after crate of polished glass bottles containing the very peak of all carbonated beverages. For quenching a thirst for perfection, there's nothing better than this Coke-hauling 1970 Ford Louisville.

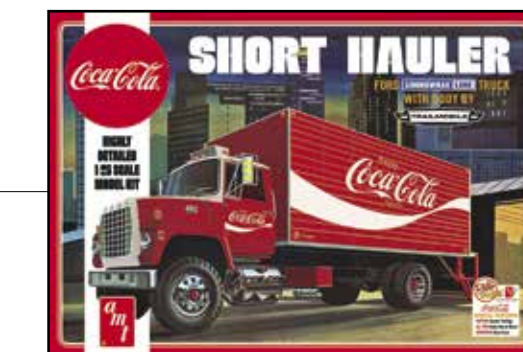
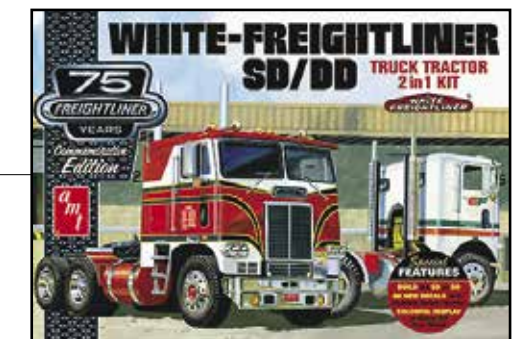
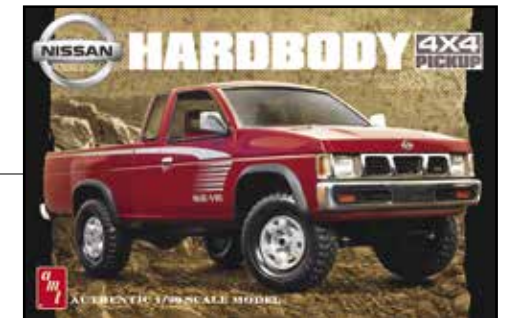
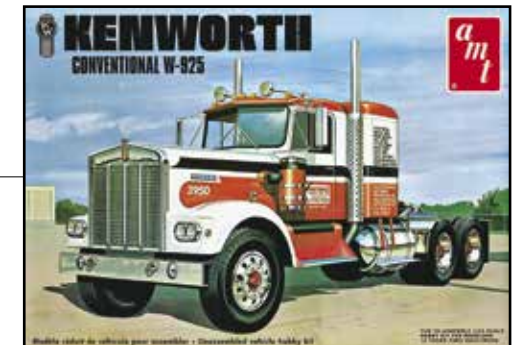
AMT1048/06 AMTS1048

### AMT 1/25 COCA COLA DON "SNAKE" PRUDHOMME WEDGE DRAGSTER

"That smooth, refreshing bite"

Delve ever deeper into a world of bubbly bliss with Don "Snake" Prudhomme's Wedge Dragster. "Snake" and "Mongoose" were pivotal in bringing drag racing into American homes. Their friendly rivalry occasionally bubbled over into animosity, but they stayed true to their sport and became household names. There's no better way to watch a drag race than over a smooth, refreshing Coke—all the better reason for Don to fly their livery on his car!

AMT1049/12 AMTS1049



www.gpdealer.com





## AMT 1/537 STAR TREK U.S.S. RELIANT AZTEC DECALS

Eat your heart out, Enterprise

With its incredible patterning and intricate design, the Aztec is probably the coolest of all Star Trek craft, if far from the most known. This **kit features** all the extensive decals you need to turn your Federation saucer into an Aztec cruiser. Decals are made by Cartograf for superior detail and fit.

MKA021/06 AMTS9921

## BANDAI MK-III DAISHOGUN "MOBILE SUIT GUNDAM", BANDAI LEGENDBB

Dominate

From the era of legend, the Mk-III Daishogun is making its appearance to the LegendBB line! The LegendBB line utilizes unique gimmicks and a super cute "Super Deformed" size. Use the ornate battle mask and jewel stickers to reproduce this ancestral armor look. Equipped with an amazing variety of weapons including the Twin Blade sword, Zhu Feng Sword, and Sansei's Spear! **Kit features** Warrior Armor, Twin Blade sword, Zhu Feng Sword, and Sansei's Spear plus jewel sticker, and seal sticker.

215635 BANS5635 Total Parts: 10 Runners Height: 3.5 in (89mm)

## BANDAI 1/144 SLAVE I (JANGO FETT VERSION) STAR WARS

Like father, like son

Jango Fett was the genetic origin for the clones that made the Empire a reality. Though less famous than his 'son', Boba Fett, Jango nevertheless plays quite the role in the prequel trilogy. His ship, Slave I, is virtually as iconic as the X-Wing. His vessel is a stolen, modified patrol craft which he uses to conduct missions for money across the galaxy. **Kit features** a display base, open or closed cockpit hatch, flight or parked cylinder parts, decals, stickers, and full instructions.

215637 BANS5637 Total Parts: 8 Runners Height: 5.9 in (150mm)

## BANDAI 1/100 DREADNOUGHT STAR BLAZERS 2202 SPACE BATTLESHIP

Ever on patrol

The Space Battleship Yamato is ever on patrol through the stars. Threats abound. Does the Yamato have what it takes to take on yet another round of conflict with the Gamillas? With threats abounding, will humanity and Earth ever be safe? The Earth Federation's Dreadnought is here and meticulously detailed! It includes LEDs in the sub engine and guns for cool effects. **Kit features** display base and four Cosmo Tiger IIs plus stickers, blue and green LEDs, decals, and full instructions.

216388 BANS6388 Total Parts: 10 Runners Height: 10 in (254mm)

## BANDAI VOL. 3 LAUNCH'S ONE-WHEEL MOTORCYCLE "DRAGON BALL", BANDAI MECHA COLLECTION

Launch into a new adventure!

The popular series - Dragon Ball - is coming to the Mecha Collection series! The Mecha Collection kits are great because they are highly detailed, easy to assemble, and come in a cute, small size - so small it can fit in the palm of your hand! Each **model comes with** two different shading colored plastic to add dimension and realism despite its small size. Keep an eye out because more from these series are set to launch in the coming months! Collect them all!

216394 BANS6394 Height: 4.4 in (112mm)

## BANDAI VOL 4 SON GOKU'S JET BUGGY DRAGON BALL

Saving the planet, one more time

Don't let the happy-go-lucky, cheerful demeanor fool you. When it comes to defending his home and his family, Goku is all business. With the power of a whole planet behind him and virtually limitless strength besides, Goku is the hero you want defending your planet. This kit is Goku's jet buggy from Dragon Ball—before he could fly. Get yours and get Goku going!

216401 BANS6401 Height: 2.8 in (71mm)

## DRAGON® MODELS 1/350 USS ARLEIGH BURKE DDG-51

"This ship is built to fight. You had better know how."

Admiral Arleigh Burke, the famed WWII veteran and Chief of Naval Operations had this bit of advice for the new crew of the Guided Missile Destroyer that was his namesake. DDG-51 is the lead ship of a class of highly-adaptable, versatile vessels designed using stealth technology and tasked with confronting surface, subsurface, and aerial opponents. USS Arleigh Burke has deployed many times, most recently in support of Operations Enduring Freedom and Iraqi Freedom. **Kit features** one-piece hull, accurately detailed gun, photo-etched railings/radar, display stand, and Cartograf decals.

1023 DMLS1023

## DRAGON MODELS 1/72 DO335B-6 ARROW Night Arrow

Only thirty seven of these aircraft ever made it into the air, and that's a very good thing. These predatory aircraft were uniquely equipped with a pair of 12 cylinder engines and a propeller both front and rear. That gave them a top speed of 475mph—nearly 40mph faster than the P-51. B-6 variants carried radar units which enabled them to hunt down enemies in the night and stitch them up with a devastating array of 20 and 30mm cannon.

5010 DMLS5010

## DRAGON MODELS 1/72 HEINKEL HE 219A-5/R4 The Iron Cross Owl

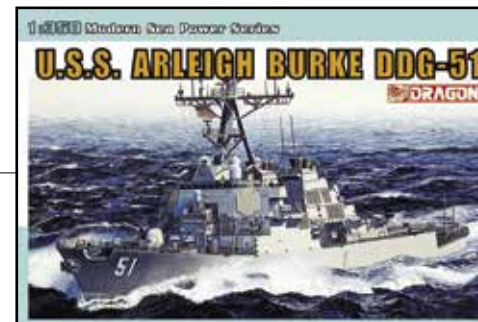
When the He 219 "Uhu" (owl) got into action it was, reportedly, an instant hit. Well, it was a hit with the Germans. The RAF, which lost five bombers in the first hour of a single Uhu's operation, was substantially less enthused. Fortunately for the free world, only about 300 were ever produced and the three-seat A-5 variant (which included a rear-facing 13mm gun to cover the Uhu's blindspot) was even rarer. **Kit features** three-seat cockpit, detailed MG 131, detailed canopy, photo-etched parts, and full decals.

5041 DMLS5041

## DRAGON MODELS 1/48 ME-163B-1A KOMET "T-Stoff" terror

Powered by an explosively powerful Hydrazine/Methanol/Hydrogen Peroxide rocket motor, the Komet could reach speeds above 600 mph. Fortunately for the Allies, the thing that gave it its immense speed also necessitated it being an extremely short range fighter. It could fly faster than any other aircraft of the day, or for decades, but it could fly less than thirty miles on a tank of fuel. Twin 30mm cannons were fully capable of shredding targets but the high rate of approach and low ammo capacity of the guns meant only the most lethal pilots could score kills with them.

5504 DMLS5504







## DRAGON MODELS 1/72 LCM(3) LANDING CRAFT WITH 29TH INFANTRY

Straight into hell

When the landing craft of the 116th Infantry Regiment, 29th Infantry Division went in on June 6th, 1944, they went straight into the teeth of the Atlantic Wall. Overlapping machine gun positions. Bunkers. Mines. Beach obstacles. Pre-sighted artillery. Whole companies dissolved. More took their place. Landing craft burned. Men floundered in the surf. More took their place. Five hours after the first landings, the defenders finally ran out of bullets. Those still among the living picked themselves up and pushed on. **Kit features** photo-etched gun shields and floor, a dozen posed 29th Division figures, three LCM crew, six beach obstacles, a beach diorama base, opening/closing ramp, and full decals.

7257

DMLS7257



1/144 B-29A "Super Fortress"

## MINICRAFT 1/144 B-29A ENOLA GAY

44.4 seconds to nothing

Floodlights brighten the morning darkness of August 6th, 1945, on Tinian Island, illuminating an enormous silver aircraft with "Enola Gay" freshly painted in black under the cockpit windows. Photographers snap pictures of the B-29 as it rolls off the tarmac. Six hours of flight time to Japan. Thirty minutes out, the safety devices are removed from the single bomb aboard. 8:15 in the clear sky above Hiroshima, the bombardier pushes a button. 44.4 seconds of hang time. A blinding flash. A cataclysmic wall of noise. A roaring ball of fire. A mile of a city vaporized. A war about to close. **Kit features** a detailed B-29 with Enola Gay decals.

14727

MMIS4727

Total Parts: 62

Skill Level: 2

Length: 8.25 in (210mm)

Width: 12 in (305mm)

Height: 2.5 in (64mm)



1/144 JU-88 A/C Luftwaffe

## MINICRAFT 1/144 JU 88 A/C LUFTWAFFE

Blasting at its best

The Ju 88 was, without a doubt, one of the most integral twin-engine aircraft of the Third Reich. It was made in dozens of variants with the A and C variants serving as bombers and night fighters. The A variant could carry around 3,000 lbs (1400kg) of bombs while the C variant instead carried the heavy interception radar as well as additional armament. All told, over 15,000 Ju 88s were produced throughout the war. **Kit features** pre-decorated clear parts, early solid nose, and two marking options.

14729

MMIS4729

Total Parts: 40

Skill Level: 2

Length: 4 in (102mm)

Width: 5.5 in (140mm)



1/144 F-111A Aardvark

## MINICRAFT 1/144 F-111 AARDVARK

Swing-wing strategic bomber

Designed for long range, high speed, and heavy weapons load—the F-111 was a revolutionary aircraft design. The Air Force version was designed as a low-level penetrator, capable of zipping in under Soviet radar, dropping its nuclear payload and zipping back out again. At least that was how it was supposed to work in theory. In practice, the F-111 only ever dropped conventional bombs and only on non-Russian targets. Aardvarks served from Vietnam to the Gulf War, earning themselves a place in aviation history. **Kit features** detailed parts and multiple decals.

14733

MMIS4733

Total Parts: 33

Skill Level: 2

Length: 6.25 in (159mm)

Width: 5.25 in (133mm)



1/144 C130J

## MINICRAFT 1/144 C-130J

Hauling more, further

A total refresh of the 60-year-old C-130, the C-130J has new engines, a new flight deck, and updated systems to give it performance superior to its planned successor aircraft. Since its introduction in 1999, over 300 C-130Js have been ordered for a total of fifteen countries. **Kit features** opening rear cargo door, positionable landing gear, unique engines and propellers, high-quality decals for two USAF versions, and pre-decorated or undecorated canopy options.

14737

MMIS4737

Total Parts: 78

Skill Level: 2

Length: 8.5 in (216mm)

Width: 12.8 in (324mm)

## MPC® SPACE 1999 22" EAGLE TRANSPORTER WITH CARGO POD

Protect Moonbase Alpha from aliens!

If you're a fan of classic science fiction, you'll no doubt recognize the Eagle Transporter from the TV series "Space: 1999." During its brief but influential run on British TV, "Space: 1999" starred Martin Landau and Barbara Bain as inhabitants of a lunar-based research center launched into deep space and encountering all varieties of fantastic adventures. **Kit features** a 22 inch Eagle Transporter with a cargo pod!

MPC838/06

MPCS0838

Skill Level: 2

Length: 22 in (558mm)



## TAMIYA ADD-ON KITS

Up the realism of your kits!

Add this dedicated sticker sheet (TAMS2673) to your 1/48 scale German Assault Mortar Strumtuger (sold separately) to add the look of Zimmerit without the additional, time-consuming step of applying Zimmerit paste and painting! Plus, put together this 1/6 scale Link-Type Motorcycle chain (TAMS2674) to give your motorcycle a ruggedly authentic look!

12672/12674

TAMS2673/2674



## NEWPRODUCT



22452-N LATB2451 San Francisco II Galleon

## San Francisco II Galleon

Set sail with the Armada

- Incredibly detailed, laser-cut wood hull
- Multimedia instructions
- Birch and pine veneers
- Cotton yarn and sails
- Banners and brass decorations
- Display stand with metal name plate
- Five metal figures

### Long story short...

*Build a Spanish Galleon—one of the powerful ships that ruled the waves during the age of sail! This incredibly detailed ship is a true delight for modelers and history buffs alike!*