

World Champion Model 18MZ WC

18-Channel 2.4GHz Radio System w/R7008SB

Futaba

18MZA World Championship Edition
Radio System w/R7008SB

Pages 2 - 3



PLUS:

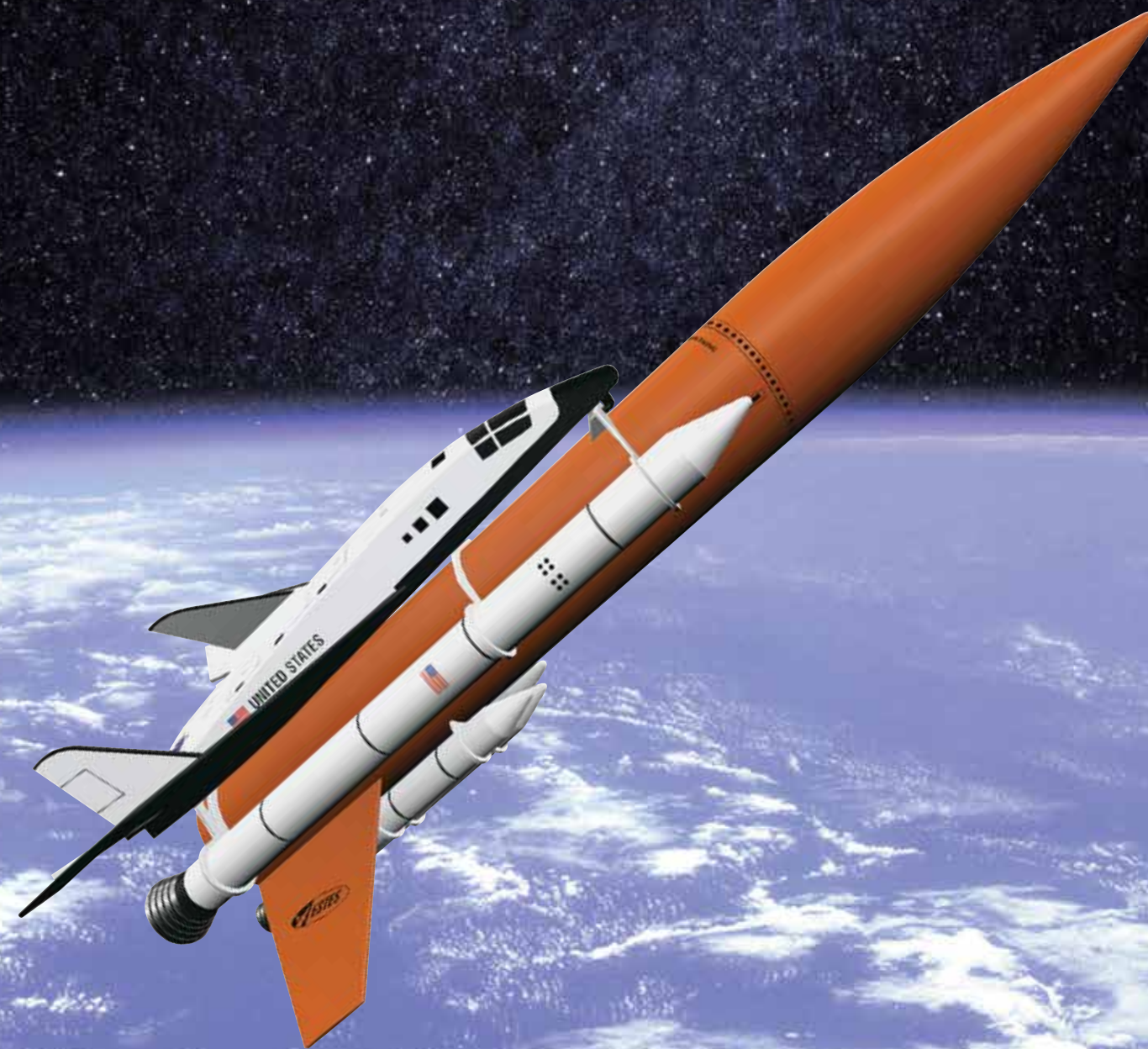
Team Associated® Nitro RC8T3
Team Kit. Designed to handle and
built to win!

Pages 4 - 5

AquaCraft® Alligator™ Tours
airboat with Tactic™ TTX300 radio.
Page 9

Venom® Fly Batteries -
Designed for Flight!

Pages 14-15



Estes® Shuttle
Page 2

PLUS:

Plastic Models for all ages and interests
Pages 2 - 13

Model Power N Scale Heavy Freight
Assortment
Page 13

TOP-OF-THE-LINE TECHNOLOGY,

OPTIMIZED FOR TELEMETRY

World Champion Model
18MZ WC
 18-Channel 2.4GHz Radio System w/R7008SB



FUTK9540

- Designed in collaboration with Christophe Paysant Le-Roux, who used a Futaba 18MZ radio to win the 2015 F3A World Championships
- Take full advantage of Futaba's latest telemetry sensors with the 18MZ WC's updated software
- Supports many telemetry functions, including rpm, temperature, voltage, altitude and GPS
- Internal hardware has also been updated to be compatible with T-FHSS protocol and all Futaba T-FHSS receivers

- Take pics of your aircraft with the built-in camera to show on the transmitter screen
- Also included is a 3500mAh LiPo Tx battery, memory card slot, tool kit, neck strap and transmitter case
- Both airplane and heli versions feature a gleaming black chrome finish, and come with an R7008SB receiver



Update and program S.Bus servos using the built-in S.Bus port.



Data and graphics show up sharp and easy to read on the 6" full-color touch screen.

From the Experts:

Its performance features are every bit as sophisticated as its looks — which means the 18MZ WC radio system is nothing short of truly remarkable. It has virtually every function you can imagine, plus the advantages of telemetry. And with its unparalleled setup options and impressive number of mixes, this radio will be your own personal partner in R/C flying success.

Long story short...

With input from the 2015 F3A World Champion, the 18MZ WC promises to be one of the most acclaimed radio systems Futaba has ever developed.



Futaba

\$
 FUTK9540 or FUTK9541

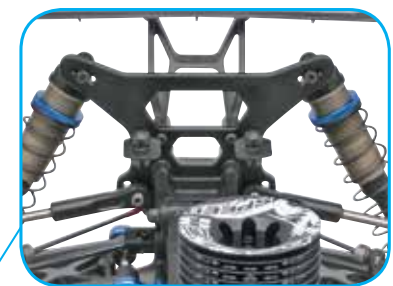
www.gpdealer.com

www.gpdealer.com

A TEAM TRUGGY KIT WITH A WINNING TRADITION



Lightweight one-piece wing mounts



7075-T6 aluminum shock towers front and rear



Refined suspension geometry with lower hinge pin inserts



7075-T6 aluminum 16mm Big Bore threaded shocks with TiN coated 3.5mm shafts



Six universal drive shafts for efficient power delivery



New V2 diffs for longer life and improved performance



Gearboxes feature a 4.6:1 internal gear ratio



80917 ASCD0917 RC8T3 1/8 Scale 4WD Nitro Competition Team Truggy Kit
Length (both): 22 in (560 mm)
Width (both): *
Weight (both): *
Wheelbase (both): 14.8-15.0 in (376.5-381.5 mm)

*Actual width and weight will vary depending on the electronics, wheels and tires used in the finished kit.



Front suspension features pillow ball uprights

- Ride rock-solid on a 7075-T6 aluminum chassis featuring optimized weight bias layout
- Lightweight ring gears and precision ball bearings reduce rotational mass for super-quick acceleration
- Access to the V2 diffs for removal, tuning and maintenance is a snap
- A two-piece sliding mount allows for quick engine removal and easy gear mesh
- Shares many parts with the RC8B3 buggy



Long story short...

The RC8T3 is the culmination of innovation and championship technology – and ready to prove it on race day!



NEW PRODUCT

THIS RADIO REALLY BRINGS THE BLING!

4PX-R Limited Edition Transmitter w/R304SB Receiver



FUTK4906
4PX-R Limited Edition
Tx w/R304SB Rx

4PX-R

Limited Edition

- Imagine the reaction when you show up at the track with a 4PX-R transmitter in gleaming black chrome!
- Features durable, long-life wheel potentiometers
- Navigate menus swiftly and accurately on the 3.5" QVGA/TFT color LCD screen
- Access important data using telemetry functions, via synthesized voice
- Adjust the wheel to fit your driving style, for right or left hand
- Hands-free control: activate the assignable switch on the bottom edge with a body bump
- Includes an R304SB S.Bus2 4-Channel T-FHSS Telemetry receiver

SHARP LOOKS — AND ACCESSORIES GALORE!

The 4PX-R comes with lots of option parts:

- LiFe battery and charger
- Metal throttle trigger
- 10° angle adapter
- Carbon carrying handle
- LCD screen protector

Futaba®



From the Experts:

If ever there was a radio that could be considered a work of art, it's the 4PX-R. Its black chrome finish is a real head-turner, and its features and functionality are second to none. There will only be a limited number of these systems available, so get yours today!

Long story short...

The 4PX-R — R/C's most advanced surface system — stands out for its performance AND its one-of-a-kind style!



FEEL THE BREEZE, AND FLY WITH EASE

Breeze Drone Motors



NOVE4132

Power your quadcopter with one SKU and save! 4-Paks contain two each of clockwise/counterclockwise Breeze motors, for the ultimate in convenience.

- **Innovative Breeze motors are truly unique, with an 18A ESC built into the motor endbell**
- **No wires between the motor and ESC means higher operating efficiency**
- **The integrated design saves room and weight — ideal when equipping space-limited 180-280mm multi-rotor models**
- **Fly with clean, quiet, dependable power and amazing throttle response, a big plus for camera and FPV racing drones**
- **Rated for 2-4S LiPos, the ESC is pre-loaded with open-source firmware that works with almost all popular platforms**
- **A protective plate provides internal shielding for components and circuitry**



NOVE4020

GREAT FOR FPV RACING!

4020	NOVE4020	Breeze 22 2204BL/2300Kv CW Drone Motor
4021	NOVE4021	Breeze 22 2204BL/2300Kv CCW Drone Motor
4032	NOVE4032	Breeze 22 2206BL/2400Kv CW Drone Motor
4033	NOVE4033	Breeze 22 2206BL/2400Kv CCW Drone Motor
4040	NOVE4040	Breeze 22 2208BL/2000Kv CW Drone Motor
4041	NOVE4041	Breeze 22 2208BL/2000Kv CCW Drone Motor
4120	NOVE4120	Breeze 22 2204BL/2300Kv Drone Motor 4-Pak
4132	NOVE4132	Breeze 22 2206BL/2400Kv Drone Motor 4-Pak
4140	NOVE4140	Breeze 22 2208BL/2000Kv Drone Motor 4-Pak

From the Experts:

Installation really is a breeze when you go with Breeze heli motors, because the motor and ESC are integrated into one unit. That eliminates having to choose the right speed control, as well as virtually any soldering. Choose from 3 sizes, and get in on the next great technological advance in drone power and precision.

Long story short...

Breeze motors are sure to be a "must-have" accessory among the rapidly growing ranks of drone pilots!

SET SAIL, AND LEAVE YOUR CARES BEHIND

Now with Tactic TTX410 radio!



Ready-To-Run Sailboat

- Enjoy smooth sailing as the Paradise's sleek fiberglass hull glides effortlessly across the water
- Go straight from the store to the shore: all on-board gear, including ballast and low-drag keel, is preinstalled
- Both the keel and booms disconnect for easy transportation and storage
- The deep-water rudder provides swift response and strong turns
- Use the included stand for an eye-catching display or as a convenient work platform
- Choose from 4 awesome colors: Blue, Green, Orange or Purple



TACTIC™
PURE RELIABLE 2.4
TTX410
4-CHANNEL SLT RADIO

The TTX410 offers 4-channel versatility with the ease of 2-stick control. Other great features include servo reversing, digital trims and quad bearing gimbals. Includes a full-range TR325 receiver with internal antenna and an unbreakable Tx-Rx link.



AQUB03** Paradise 26" Sailboat
RTR w/TTX410
Hull Length: 26 in (660 mm)
Beam: 5.25 in (135 mm)
RTR Weight: 3 lb (1.36 kg)
Requires: (8) "AA" batteries



From the Experts:

There's nothing like a relaxing cruise across the lake at the helm of an elegant sailboat — and the Paradise delivers all of the perks with none of the work. It arrives factory-finished and loaded with scale details — along with a Tactic TTX410 radio system that provides precision control for an exceptional sailing experience.

Long story short...

With its stylish looks, realistic performance and Tactic TTX410 radio, the Paradise is the ultimate R/C pleasure cruise!



GET UP TO SPEED IN A HURRY!



Ready-To-Run
Glow-Powered Airboat



- Romp through the swamp with this exciting adventure craft!
- A SuperTigre .27 engine and APC™ 9x6 pusher prop provide the thrust; large fiberglass air rudders deliver sudden, sweeping 180° turns
- The flat-bottom hull avoids underwater hazards, while molded-in strakes keep you running straight and true, even at top speeds
- Check out the amazing scale touches on this boat, including a welded steel prop cage and detailed driver and passenger seats
- Display and carry the Alligator Tours airboat with the multi-purpose stand

**Now with Tactic
TTX300 radio!**



TACTIC™
PURE RELIABLE 2.4
TTX300
3-CHANNEL SLT RADIO

The TTX300 delivers reliable, interference-free control — along with great features such as steering and throttle reverse and trims, steering rates, two-button control of the 3rd channel and a 3-channel TR325 receiver.

AQUB1803 Alligator Tours Airboat
RTR w/TTX300
Length: 30.3 in (770 mm)
Beam: 11.2 in (285 mm)
Height: 14 in (355 mm)
Weight: 6.3 lb (2.86 kg)
Requires: 10-15% nitro aircraft fuel,
8 "AA" batteries



From the Experts:

You'll feel like you're flying across the Florida Everglades at the controls of the Alligator Tours airboat! The .27-sized engine delivers realistic sound and performance, and the TTX300 radio puts you in complete control. Add to that the boat's exceptional detail and Ready-To-Run convenience, and you have a truly unique take on boating fun!

Long story short...

Power across water, lily pads, marshes and wetlands with the Alligator Tours airboat — now equipped with a Tactic TTX300 radio!



NEWPRODUCT

TOTALLY TUNABLE, AND IN IT TO WIN IT!

D216

1/10 Scale 2WD Electric Racing Buggy Kit

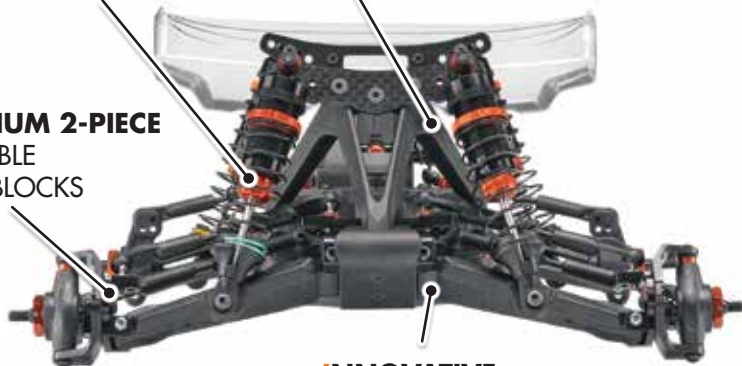


TRIANGULATED
SHOCK TOWER MOUNTS

12mm BIG BORE
V2 SHOCKS

ALUMINUM HEX HUBS
FRONT AND REAR

ALUMINUM 2-PIECE
ADJUSTABLE
CASTER BLOCKS



INNOVATIVE
HINGE BOSS DESIGN

- It's HB's first ever 2WD racer, with tons of valuable input from pro team drivers David Ronnefalk and World Champion Ty Tessmann!
- Experience incredible handling and flexibility with the mid-motor, 3-gear transmission
- Adjusting the triple plate, large diameter slipper clutch can be done externally to save time
- Position the battery to give you the best weight balance — front, rear, left or right
- Hook-and-loop body mounting allow quick and easy access to the interior
- Compatible with many D413 parts, including shocks, rear hubs, CVDs, wing mounts, arm mounts and more

116155 HBSC6155 D216 1/10 Scale 2WD Electric Racing Buggy Kit
Length: 15.7 in (398 mm)
Width: 9.8 in (250 mm)
Height: 5.3 in (135 mm)
Wheelbase (adjustable): 11.1 in (282 mm)
Requires: 2-channel radio system with steering servo, motor, speed control, battery, tires

From the Experts:

Innovation doesn't begin to describe the D216...but it's a good place to start. On the heels of the wildly successful D413, HB is unleashing a state-of-the-art buggy kit that's chock-full of cutting-edge technology and fully adjustable everywhere you look. This is the 2WD ride you've been waiting for!

Long story short...

The D216 is ready to hit the ground running — and running HOT!



GET THE MOST OUT OF YOUR DRONE

Drone LiPo Batteries



VNRE5012



VNRE5027



VNRE5037

- Over 40 Drone batteries – from 1S-6S, 3.7V-22.2V, and 150mAh-16,000mAh
- Engineered for drones. Experience consistent power and exceptional performance, flight after flight
- Choose from the most popular connectors, including patented UNI 2.0 (XT60, Deans, EC3), E-Flite MCX, Micro Losi and JST
- Also available: batteries for Yuneec Q500 Series, 3DR Iris+, Parrot Bebop/Skycontroller, SenseFly and Hubsan X4 Pro



VNRE5040

Ask your hobby retailer to see the complete list of Drone LiPo batteries!



Long story short...

Trust Venom innovation and expertise to significantly upgrade your UAV's performance!

THE DUAL OUTPUT CHARGER THAT DOES IT ALL

1216-C2 Dual AC/DC Competition Balancing Charger



27200 ASCP2720
1216-C2 Dual AC/DC
Competition Balancing Charger

- Charge two LiPo/LiFe/Li-Ion/NiMH/NiCd/Pb batteries at up to 12A simultaneously
- Save and recall up to 10 different charge/discharge profiles
- Terminal Voltage Control (TVC) lets you adjust the LiPo charge voltage between 4.00V and 4.23V per cell — lower rates for modified class, or maxed out for stock vehicles
- With an appropriate 1S balance charge lead, you can connect your 1S battery to the charger using the balance board for more accurate voltage readings
- Other great features include a Lithium battery meter, fast and storage modes and dual backlit LCD screens



Long story short...

A high-performance microprocessor and special software make the 1216-C2 versatile, easy to use — and ideal for hobbyists of all levels.

SUPERIOR SERVOS FOR YOUR 1/8 SCALE OFF-ROADER

Digital HV HS Aluminum Competition Servos



ASCM7106

ASCM7107

- Drive cool and confident: the all-aluminum case reduces operating temps while increasing strength and rigidity
- A precision metal gear drivetrain boosts on-track performance
- Take advantage of these servos' high voltage compatibility by using 2S LiPo receiver batteries for the highest speeds and most torque
- Both come with aluminum clamping servo horn; standard aluminum servo horn and gear sets available separately

- 27106 ASCM7106 RS1806A Digital HV HS Aluminum Competition Servo
- 27107 ASCM7107 RT2207A Digital HV HT Aluminum Competition Servo
- 27120 ASCM7120 RS1806A Gear Set for 27106
- 27121 ASCM7121 RT2207A Gear Set for 27107
- 27122 ASCM7122 Aluminum Servo Horn, 25 Spline
- 27123 ASCM7123 Aluminum Clamping Servo Horn, 25 Spline

Long story short...

Let advanced Reedy servo technology put you on the fast track to the winner's circle!



BIG POWER CONTROL FOR BIG OFF-ROADERS

SC1000-DB Sensorless Brushless ESC



www.gpdealer.com



29197 ASCM9197
SC1000-DB Sensorless
Brushless ESC

- A robust ESC that installs in most 1/8 scale buggies, truggies and monster trucks
- Comes pre-wired for two LiPo batteries, with individual low voltage cutoff protection
- The super-durable case features an aluminum heat sink
- Enjoy responsive stopping power with fully proportional brakes



Long story short...

Pair the SC1000-DB ESC with Reedy brushless motors for a potent combination of power and efficiency!

Just Released



010-0152-00 CSEM5200
Futaba S.Bus2 Telemetry Link

Castle™ Creations Futaba® S.Bus2 Telemetry Link

Bringing Castle telemetry innovation to Futaba radios!

- Receive telemetry data on a compatible Futaba radio controlling any model equipped with a Castle Creations ESC, a compatible Futaba telemetry receiver and Futaba S.Bus2 servos
- Set parameters that will alert you (via sound or vibration) when a defined threshold is exceeded
- Enable/disable up to 7 available data points using Castle Link™

The Castle ESC must have the ability to accept a bidirectional communication protocol that gives it the ability to transmit real-time telemetry feedback. This feature is called Link Live™ and needs to be enabled on compatible ESCs using Castle Link™.



4700 TAEC4700
Performance Plus
Clear Bio Cleaner/
Degreaser-32 oz.

T.A. Emerald Performance Plus Clear Bio Cleaner/ Degreaser-32 oz.

For the ultimate in cleaning performance, the difference is Clear.

- Remove grease, grime, dirt, mud, dust fuel oil residue and other contaminants from R/C vehicles, airplanes, boats, helis and drones
- Safe on plastics, aluminum, carbon fiber, rubber and metal
- Contains fast-acting biodegradable cleaning agents



Venom is excited to deliver the lightest, best performing LiPo batteries in our 15-year history. FLY packs are specifically engineered for flight and help your customers pilot their favorite R/C planes and helicopters to new heights.

ENGINEERED FOR FLIGHT



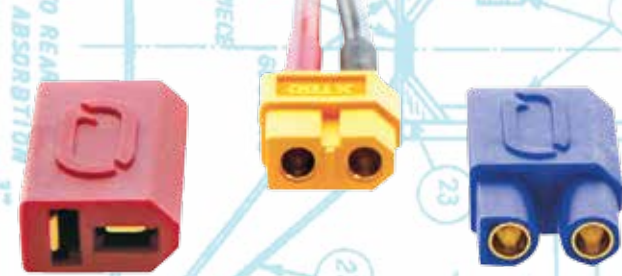
Lifetime Battery Replacement Plan

5C Fast Charge Capable

"A" Grade Matched Cells

Easy to Connect (XT 60, Deans® and EC3)*
*on most models

UNI PLUG SYSTEM 2.0



VENOM QUALITY

Produced using the best LiPo technology available, these packs are bred from our racing heritage and built for flight.

DEALERS: Save \$ when you order these convenient PAKs that include an assortment of Venom FLY LiPo packs!

- PAK06930 Small Venom FLY LiPo Battery Assortment (14)
- PAK06931 Large Venom FLY LiPo Battery Assortment (47)

Ask your hobby retailer to see the complete list of FLY LiPo batteries!

REDUCE INVENTORY

Our patented UNI 2.0 plug system* utilizes an XT60 connector that easily attaches to the included Deans® and EC3 adapters. Smaller packs include popular connectors like JST-MCX, Micro Losi and JST-PH (E-Flite®)
*on most models

INNOVATIVE RETAIL PACKAGING



Eye-catching packaging that grabs attention.

Unique two-sided box packaging (Vertical or Horizontal).



ONE WI-FI® CAMERA. INFINITE POSSIBILITIES.

DRONEVIEW

First Person View Wi-Fi Mini Camera



TACZ1000
Shown actual size



All you get



DroneView
Mobile App

The DroneView First Person View (FPV) Mini Camera is so versatile, its applications are almost endless. It's inexpensive and easy to use: simply mount it, turn it on, and begin shooting videos and still photos. Download the free DroneView app and link to a mobile device, and you can enjoy First Person View, in real time — or download video and photos via Wi-Fi to your mobile device to share on your favorite social media sites.

Want another perspective on your R/C adventures, or a fun way to capture everyday experiences? Let the DroneView FPV Mini Camera be your extra set of eyes!

Attach the DroneView to:

- Any R/C car, truck, airplane, heli or multi-rotor
- Model train
- Skateboard
- Bicycle
- Helmet or headgear

The options are endless...



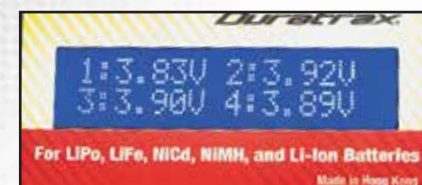
TACTIC™

Apple and the Apple logo are trademarks of Apple Inc., registered in the U.S. and other countries. App Store is a service mark of Apple Inc. Android™ and Google Play are trademarks of Google Inc. Wi-Fi® and Wi-Fi Alliance are registered trademarks of the Wi-Fi Alliance.

TODAY'S BEST VALUE IN A BALANCING AND PEAK CHARGER!



AC/DC Advanced Charger



The big, 2x16 LCD spells out data in full. Backlighting and reversing make them easy to read day or night.



With the Onyx 225, even cells in a 6S pack charge to their maximum possible voltage.



AC and DC input cords can be removed in seconds for easier storage and carrying.

Specifications

AC Input:	110V AC 60Hz
DC Input:	11-15V DC
Output Power:	AC: 60W DC: 60W
Battery Types:	NiCd/NiMH: 1-15 cells; LiPo/LiFe: 1-6 cells
Fast Charge Current:	0.1-6.0A Linear
Fast Charge Termination:	Peak detection for NiCd/NiMH CC/CV for lithium types
Fast Charge Safety Timer:	0 – 300 Minutes
NiCd/MH Peak Sensitivity:	3-20mV Adjustable
NiCd/MH Trickle Charge Current:	Auto (1/20 fast charge setting) or manual adjust (0-250mA)
Lithium Balancing Accuracy:	5mV per cell
Lithium Max. Node Current:	300mA
Displayed Information:	Input and output voltages, peak voltage, charge current, charge capacity and time, individual cell balancing voltages
Input Connections:	Detachable AC Lead w/plug, jack for DC
Output Connections:	4mm Female Banana Jacks
Balancing Accuracy:	5mV per cell
Protective Devices:	Solid-state reverse polarity & current overload
Cooling System:	Fan
Dimensions:	5.2 x 5.5 x 2.1" (134 x 140 x 54mm)
Weight:	11.1oz (314g w/o cords connected)
Included Accessories:	4mm banana to Star Plug adapter 4mm banana to Traxxas adapter AC input cord DC input cord ElectriFly Balance board with adapter

All trademarks are the property of their respective owners.

From the Experts:

You can spend more money on other chargers, but you won't find a better value in peak and balanced charging than the Onyx 225. It arrives with 10 charging routines already in memory for ease, but also gives you the power to customize any one to your specific charging needs. A 2-line, 16-character LCD makes it easy to check the status of every battery operation, from initial setup to full, final charging.

Long story short...

Price makes the Onyx 225 a top pick for value, while its charging and balancing ranges make it a natural choice for virtually any car, truck, boat or aircraft application.

- Offers peak charging, adjustable peak sensitivity and trickle charging for 1-15 cell NiCd or NiMH packs
- Balances and charges up to 6 LiPo, Lilon or LiFe cells to their maximum voltages
- Includes convenient charge jack for 4-, 5- and 8-cell radio packs
- Push-button controls simplify setup, confirm settings and provide alerts with video and audio cues
- Stores up to 10 charging routines in model memory, with numerous programmable functions
- Powerful 60W AC power supply — the closest competitor has 50W
- Banana jacks are compatible with most popular charge adapters — adapters with standard, Traxxas and new Star Plug are included
- 5-year limited warranty

DTXP4225 Onyx 225 AC/DC Advanced Charger



BEHOLD THE ULTIMATE BRUSHLESS BUGGY

TYPHON 6S BLX



- ARRMA BLX 2050kV brushless motor for awesome speed
- BLX180 waterproof 6S capable ESC with built-in fans and capacitors
- Waterproof Receiver Box with ARRMA gasket technology
- ATX-100 2.4GHz Radio with ARX-100 receiver
- ADS-15 waterproof 15kg metal gear Steering Servo
- Heavy-duty Gear Diffs with lightweight composite casings and tough steel outdrives
- Fully adjustable Battery Tray that can hold a 6S LiPo battery
- Multi-surface dBoots™ tires with aggressive tread pattern and foam inserts
- Tough, aerodynamic polycarbonate body shell with printed trim scheme

ARAD80** TYPHON 6S 1/8 Scale Brushless 4WD Speed Buggy RTR
 Length: 20 in (510 mm)
 Width: 12.2 in (310 mm)
 Height: 7.5 in (190 mm)
 Wheelbase: 13 in (330 mm)
 Approx. Weight: 8.6 lb (3.9 kg)
 LiPo battery and charger not included.

From the Experts:

When equipped with a 6S LiPo battery the TYPHON 6S Speed Buggy produces massive 4WD power for bashing and jumping — along with blink-of-an-eye speeds for taking the checkered flag. Serious racers will appreciate the TYPHON's high level of adjustability, and the impressive list of aluminum, steel and composite parts speaks to this off-roader's durability!

Long story short...

With the TYPHON 6S Speed Buggy you won't just beat the competition...you'll dominate the competition!



ATTACK ANY TERRAIN...WITH 6S BRUSHLESS POWER

KRATON 6S BLX



- ARRMA BLX 2050kV brushless motor for awesome speed
- BLX180 waterproof 6S capable ESC with built-in fans and capacitors
- Waterproof Receiver Box with ARRMA gasket technology
- ATX-100 2.4GHz Radio with ARX-100 receiver
- ADS-15M waterproof, metal gear steering servo with 208 oz-in (15kg) of torque
- Heavy-duty Gear Diffs with lightweight composite casings and tough steel outdrives
- Fully adjustable Battery Tray that can hold a 6S LiPo battery
- Huge dBoots™ tires with aggressive all-terrain tread for maximum traction
- Ultra-wide footprint for optimum stability on any surface
- Tough, aerodynamic polycarbonate body shell with printed trim scheme

ARAD81** KRATON 6S 1/8 Scale Brushless
4WD Speed Monster RTR
Length: 23.2 in (590 mm)
Width: 18.5 in (470 mm)
Height: 7.7 (195 mm)
Weight: 8.8 lb (4 kg)
Wheelbase: 14.9 in (378 mm)
Ground Clearance: 1.3 in (33 mm)
Requires: 4-6 Cell LiPo, charger and AA batteries



From the Experts:

If you want a monster truck that's as quick as it is tough, then the KRATON 6S Speed Monster is the ideal choice. Mind-blowing power and jaw-dropping speeds are what this truck is known for — especially when equipped with a 6S LiPo battery. And even with all that performance, the KRATON still handles like a dream!

Long story short...

The KRATON 6S Speed Monster features unstopable durability — and Speed is its middle name!



SCX10™ DEADBOLT™
 1/10th SCALE ELECTRIC 4WD #AX90044
READY TO RUN



AXID9044 - SCX10™ Deadbolt™ 4WD RTR

Length: 21.25" (540mm)
Width: 9" (229mm)
Height: 9" (229mm)
Wheelbase: 12.3" (313mm)
Ground Clearance: 2.7" (68mm)
Weight: 4.65lbs (2.1kg)

For additional items see a complete list at www.GPDealer.com

- Deadbolt™ body w/ roll cage and driver
- Universal light bar set (NOTE: LED lights sold separately)
- Officially licensed Poison Spyder Rock Brawler front bumper
- Officially licensed 1.9 Maxxis Trepador tires molded in R35 compound
- Officially licensed 1.9 Walker Evans Racing Wheels
- AE-5 ESC w/ drag brake - 3S LiPo capable
- Metal gear Tactic servo - 151 oz-in of torque
- WB8 HD Wild Boar driveline system, as simple as it is durable
- Adjustable coil-over shocks
- 4-link rear suspension - optimized to reduce axle steer & torque twist



SUPPORT THAT'S SECOND TO NONE

R/C vehicles are only as good as the company behind them, and no one stands behind their products as staunchly as ARRMA. Both you and your customers can use ARRMA's online tools to:

- find manuals and parts lists for all vehicles,
- interact with fellow ARRMA owners and share photos, and
- be inspired by watching videos on ARRMA TV.



GRANITE

ARAD37**

1/10TH SCALE 2WD ELECTRIC MONSTER TRUCK

ALL YOUR SUPPORT DOCUMENTS IN ONE EASY LOCATION

www.rrma-rc.com/support/downloads

 Manual
  Exploded View
  Warranty
  Parts List
 

It's all there, and easily accessed through www.rrma-rc.com.

TO NONE

'ARRMA'

DESIGNED **FAST** DESIGNED **TOUGH**

INSTANT ACCESS TO THE ARRMA COMMUNITY

Become ARRMA famous — www.rrma-rc.com/hof

The ARRMA Hall of Fame is where ARRMA owners can show off their pride and joy, or share tips on tricking out a vehicle's looks and/or performance. Modelers are encouraged to post photos of their ride on Facebook using the hashtag #ARRMAHOF.



Paul Burdick has just picked up a GRANITE 2WD Monster Truck. Welcome to the action Paul. #ARRMAHOF #HALLOFFAME #GRANITE #MONSTERTRUCK #2WDRULES #ARRMATOUGH #AWARDBWINNER #BRUSHED #MEGA



Custom light rig on this cool GRANITE 2WD monster truck lid from Thomas Pettersson. Nice. #ARRMAHOF #GRANITE #2WDROCKS #MONSTERTRUCKS #HALLOFFAME #BASHERSCHOICE #AWARDBWINNER #ARRMASWEDEN #DESIGNEDTOBETOUGH #DESIGNEDTOBEFAST

Join the ARRMA action live!
www.rrma-rc.com/tv

Watch videos of all the cool stunts and crazy maneuvers drivers are doing with their ARRMA vehicles. They're categorized by Most Popular, 10th Scale Vehicles, 8th Scale Vehicles and Tutorials.



ARRMA GRANITE BLX Bash-Backflips-Park-High Air-Jumps"

'ARRMA' TV



"ARRMA Tips-Tire Gluing"

BIG, BOLD — AND BRED TO WIN!

They're the premier racing kits for dominating the 1/8 scale competition, leading the way with sizzling speeds, super toughness and confident handling. Whether you're drawn to the heart-pounding realism of the nitro-powered DNX8 Buggy, or the electric convenience and performance of the DEX8 Buggy and DEX8T Truggy, Team Durango 1/8 scale machines boast top-notch technology that make them the perfect platforms for reaching the podium!

DNX8

1/8 Scale 4WD Nitro Buggy Kit

Length: 20.6 in (522 mm)

Width: 12.1 in (307 mm)

Requires: race spec nitro engine, 2-channel radio system, high-torque steering servo, high-torque throttle/brake servo, tires, wheels, pinion gear

TD102040 TDRC0211



DEX8

1/8 Scale 4WD Electric Competition Buggy Kit

Length: 20.6 in (522 mm)

Width: 12.1 in (307 mm)

Requires: motor, ESC, 2-channel radio system, high-torque steering servo, (2) 2S 7.4V LiPo batteries, compatible charger, tires, wheels, pinion gear

TD102038 TDRC0302



DEX8T

1/8 Scale 4WD Electric Competition Truggy Kit

Length: 23.3 in (585 mm)

Width: 16.2 in (408 mm)

Requires: motor, ESC, 2-channel radio system, high-torque steering servo, (2) 2S 7.4V LiPo batteries, compatible charger, tires, wheels, pinion gear

TD102039 TDRC0402



These are just a few of the amazing innovations that these powerhouses share!

- Sliding gear mesh for rock-solid weight distribution and consistent braking
- Fully adjustable pivot ball suspension and hinge pin inserts for more front-end mod options
- Independent active caster inserts for super-efficient tuning
- 16mm Big Bore aluminum shocks that smooth out the bumpiest terrain
- Easy-access center diff
- 3mm thick 7075 T6 hard anodized aluminum chassis
- Durable steel universal joint drive shafts for smooth operation
- Strong, flexible nylon wing that resists damage during a rollover

TURN HERE FOR GENERAL HOBBY PRODUCTS

ORBITAL EXCELLENCE

Start your own space program!

Skill Level **5**



These kits require a high degree of modeling, building, and painting skill. Construction is complex and requires advanced wood and paper working techniques. Assembly may take a few days but the result is a rocket with museum-like qualities and exceptional flight characteristics.

Estes® Shuttle

Set out for the stratosphere

Length: 23.2 in (58.9 cm)

Diameter: 2.6 in (66 mm)

Weight: 9.5 oz (269 g)

Max. Altitude: 500 ft (152 m)

Features: Laser cut wood, waterslide decals, 24 in parachute and glider recovery

Recommended Engines: D12-3 (first flight), E12-4

Requires: Finishing supplies, launch system, engines, starters, and recovery wadding

ESTT7246



Long story short...

Start the countdown to liftoff with this awesome Estes Shuttle kit!



1/25 1983 HURST OLDSMOBILE®

Premium performance

The relationship between Hurst Performance Products and Oldsmobile® goes back to 1968, when the first Hurst Oldsmobile® Cutlass™ was introduced. The fifth, and last, generation was offered in 1983 and 84. It was built on the rear-wheel drive G-Body of the Cutlass. In 1983, only 3,001 cars were produced and were available only in black with silver rocker panels. In '84, the colors were reversed, but otherwise the cars were identical. **Kit features** detailed 307 c.i. V8 engine, front and rear spoilers, pre-painted redline wheels, chrome parts, and soft black tires.

85-4317 RMXS4317 Total Parts: 98 Skill Level: New 4 Length: 7.8 in (198 mm)



1/25 1991 FORD® F-350 DUALY

Heaviest hauler

This Ford pickup was designed for heavy hauling. It is instantly recognizable by its dual rear wheels and fiberglass extended rear fenders. Specifically, it was developed to handle 5th wheel trailers, where the trailer connection is in the center of the pickup bed. To pull large trailers, this F-350 is powered by a 7.5 liter V-8 engine, equipped with multi-port fuel injection. **Kit features** detailed 7.5 liter V-8 with multi-port fuel injection, full roll bar with extra lights, detailed chassis, wide side mirrors, and soft black tires.

85-4376 RMXS4376 Total Parts: 136 Skill Level: New 4 Length: 9.75 in (248 mm)





1/144 EMBRAER 195

Big Brazilian Bird

Newer, larger versions of the E-175s, Embraer 195s are designed to convey between 100 and 125 passengers on mid-range flights. They were designed by the Brazilian government-backed company Embraer and are sold all over the world—helping contribute to Embraer's status as one of the five largest aircraft manufacturers in the world. One popular user of the Embraer 195 is Air Dolomiti. This airliner operates ten Embraer 195s between Munich and Italy for carrying 120 passengers each for both business and vacation. **Kit features** Air Dolomiti decals.

04884 RVLS4884 Total Parts: 55 Skill Level: 3 Length: 10.5 in (267 mm)



1/72 AVRO SHACKLETON MK.3

Superior sub sinker

Designed after the end of WWII to help fill the gap left by returning Lend-Lease bombers, the Avro Shackleton found itself searching for an old ally during the Cold War. Assisting it in its task was a bewildering array of sensors that could pick up everything from radar signatures to diesel emissions. Once detected, the Shackleton could engage subs with 20mm cannons, bombs, and depth charges. **Kit features** detailed cockpit, full weapon bay, open/closed side door, separate rudders on tailplane, radome, separate ailerons and flaps, detailed engines, and two sets of RAF decals.

04920 RVLS4920 Total Parts: 193 Skill Level: 3 Length: 14.6 in (370 mm)



1/24 SCHLINGMANN HLF 20 (MANTGM EURO 6)

Where's the fire?

When lives are on the line you can't afford even momentary breakdowns, so Schlingmann focuses on delivering the highest quality machines to firefighting services across the European Union. The HLF 20 operates as a fire-fighting platform with a rescue ladder, fire pumps, and stowage room for all the gear firefighters need! These engines are also equipped with first-responder equipment for dealing with traffic accidents on the autobahn and tense scenes everywhere. **Kit features** opening equipment bay doors, generators, rescue shears, hoses, detailed crew compartment, scaling ladder on roof.

07452 RVLS7452 Total Parts: 250 Skill Level: 5 Length: 14.3 in (363 mm)



Hobby kits



1/200 C-40A CLIPPER US NAVY

A cargo "clipper" for the 21st century

In the age of sail, "Clippers" were some of the fastest ships afloat. Today, the C-40A Clipper serves the US Navy in a personnel and cargo transportation role. It is a modified version of the Boeing 737-700, capable of being quickly altered between a 121 passenger, pure cargo, or combination passenger and cargo role. Clippers help keep the full extent of the US Navy's holdings and forces around the world connected to supplies from home.

10816 (Limited Edition) HSGS0816 Total Parts: 47 Skill Level: 3 Length: 6.6 in (168 mm)



1/24 HONDA® N360 All-purpose auto

Conceptually similar to the Volkswagen® Beetle, the Honda N360 was a small, light passenger vehicle developed in Japan during the late sixties. It was powered by an air-cooled inline 2-cylinder engine small enough that the spare tire could fit in the hood space next to the engine block. In essence, the purpose of this rather boxy vehicle was to provide an affordable automobile for Japan's rapidly re-industrializing economy. **Kit features** decals for two types.

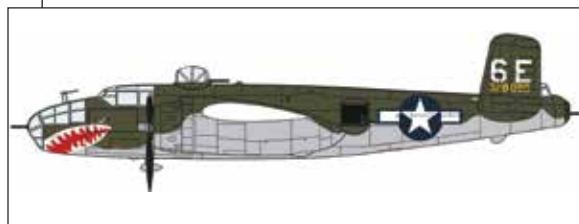
21121 (Limited Edition) HSGS1121 Total Parts: 114 Skill Level: 3 Length: 4.9 in (124 mm)



1/72 B-25J MITCHELL "SHARK TEETH" Eating through ordnance

With between twelve and eighteen .50 caliber machine guns, a 75mm forward-mounted cannon, and a large bomb capacity, the B-25J Mitchell was entirely capable of shredding ground targets. It was used heavily as a ground support aircraft and a medium bomber in virtually all theaters of the Second World War. Limited edition **kit features** two sets of decals for USAAF aircraft from 1944.

02187 (Limited Edition) HSGS2187 Total Parts: 132 Skill Level: 3 Length: 9.5 in (242 mm)



1/72 TORNADO GR.4/IDS "TTTE 35TH ANNIVERSARY" COMBO Tri-National Tornado Training Establishment

Tornado fighters were developed by Germany, the United Kingdom, and Italy, so it makes sense that their crews would be trained cooperatively as well. At RAF Cottesmore airmen from the Luftwaffe, Aeronautica Militare, and Royal Air Force spent four weeks conducting ground training and then a further nine practicing aerial skills in the Tornado. This arrangement lasted for over eighteen years before easing Cold War tensions lead to the development of nationally-based programs in 1999. This limited edition **kit combo features** two aircraft and three sets of decals.

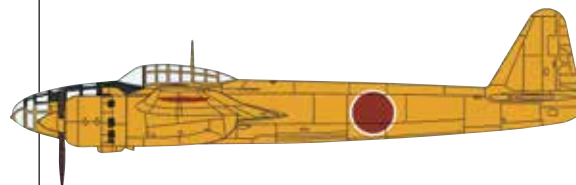
02188 (Limited Edition) HSGS2188 Total Parts: 115 + 111 Skill Level: 3 Length: 9.6 in (243 mm)



1/72 KUGISHO P1Y2-S KYOKKOH (FRANCES) Radar riding night fighter

Demands for the design of the P1Y were impossible to accommodate—Japan wanted a dive/torpedo/medium level bomber as fast as the Zero with the range and payload of the G4M plus Nakajima Homare engines. The aircraft resulting from such a convoluted craft rapidly proved difficult to operate. It was modified to a night fighter for the P1Y2-S with radar and 20mm cannons. However, even this version couldn't operate at altitudes high enough to capture the B-29. Limited edition **kit features** two sets of decals.

02189 (Limited Edition) HSGS2189 Total Parts: 72 Skill Level: 3 Length: 8.2 in (208 mm)





1/72 F-15J/DJ EAGLE "201ST SQUADRON 30TH ANNIVERSARY"

Northern watch

Operating out of Chitose Air Base on Hokkaido—the large northern island of Japan—the 201st squadron has defended Japanese airspace for thirty years using the F-15J Eagle. The "J" variant of the F-15 is an export model purpose-designed for Japan without the electronic countermeasures suite and some engine features of the domestic type. It has been upgraded several times over this service life and continues to be one of the finest aircraft in the JASDF inventory. **Kit features** tandem seat cockpit option and two sets of 201st Squadron decals.

02190 (Limited Edition) HSGS2190 Total Parts: 142 Skill Level: 3 Length: 10.5 in (267 mm)



1/72 F-4EJ PHANTOM II "ADTW 60TH ANNIVERSARY"

Sixty years served

For over half a century the F-4EJ Phantom II has been serving with the JASDF. Today, it serves with the Air Development and Test Wing at Gifu Air Base where its incredible speed and lift capacity are a great asset in tests of new technology. Previously, as an air superiority fighter, that same speed was coupled with an incredible load of missiles and a broad range for protecting Japan's extensive territorial waters. Limited edition **kit features** a special 60th Anniversary special decal marking set.

02191 (Limited Edition) HSGS2191 Total Parts: 117 Skill Level: 3 Length: 10.4 in (265 mm)



1/700 JAPANESE NAVY HEAVY CRUISERS

Kako and Kinugasa

The morning after participating in a crushing victory over US surface vessels, Kako was struck three times with torpedoes. She rolled, her boilers exploded, and at 7:15 she sank beneath the waves. Most officers and crew escaped to the safety of nearby Japanese warships. Kinugasa was the first IJN vessel to be fitted with an aircraft catapult. She came through many fights unscathed but at Esperance she was struck by shells. Then, at Guadalcanal, bombing killed her Captain and XO, and knocked out power and steering. Just before midnight on 14th November, Kinugasa capsized and sank.

43168/43169 (Limited Edition) HSGS3168/3169 Skill Level: 3
Length: 10.4 in (264 mm)



1/48 KAWASAKI T-4 "HAMAMATSU SPECIAL 2015"

Top trainer

Since the 1980s, the T-4 has been the primary jet trainer of the JASDF as well as their demonstration team's aircraft of choice. It is a highly-maneuverable subsonic jet aircraft with hardpoints for training bombs and missiles. Included with this model is a special marking celebrating the sixtieth anniversary of the JASDF—a landmark especially important for the T-4 because, for half that time, JASDF pilots have been training with the T-4. Limited edition **kit features** special 60th anniversary decal.

07427 (Limited Edition) HSGS7427 Total Parts: 117 Skill Level: 3 Length: 10.2 in (258 mm)

1/48 MITSUBISHI J2M3 RAIDEN TYPE 21 "TATSUMAKI UNIT"

Playing defense

The heavily armed, high-powered J2M3 Raiden was meant for short-range defense of high-value targets against B-29 Superfortresses. Without a turbocharger it couldn't operate at the level of the B-29 superfortress for long, but thanks to its four-20mm cannon armament, it didn't have to. Despite its fine qualities, the Raiden was not produced in enough numbers to make a significant impact on the war effort, especially after the US switched to night-bombing in the Pacific. **Kit features** three sets of IJN decals.

07428 (Limited Edition) HSGS7428 Total Parts: 81 Skill Level: 3 Length: 8 in (202 mm)



HASEGAWA 1/48 F-16C FIGHTING FALCON "CFT"

Light and lightning-fast

Combating the gradual drift to ever larger, heavier, and more heavily armed fighters, the F-16 Fighting Falcon is a light, high-power fighter with an integral 20mm Gatling cannon and provision for wing-tip missiles. Conformal Fuel Tanks (CFTs) are extra, external fuel canisters plumbed to the aircraft and kept close to the fuselage to reduce drag. Unlike drop tanks, CFTs cannot be discarded in flight but they also present less additional radar cross section. **Kit features** an experimental CFT-equipped Falcon based in Eglin AFB.

07429 (Limited Edition) HSGS7429 Total Parts: 123 Skill Level: 3 Length: 13.1 in (334 mm)



1/32 MITSUBISHI A6M5C ZERO FIGHTER (ZEKE) TYPE 52

Bomber blaster

Originally, the Zero was designed as an air superiority fighter—meant to take down opposing fighters with superior maneuverability and speed. As the war wore on, however, more and more American bombers were making it, unescorted, to their targets in Japan. This variant of the Zero carried an additional pair of 13.2mm machine guns as well as rockets and a thicker wing. All these changes made it less suitable for fighter-to-fighter combat but better for bringing down the massive B-29. **Kit features** pilot figure and two sets of IJN decals.

08884 HSGS8884 Total Parts: 150 Skill Level: 3 Length: 11.3 in (287 mm)



1/72 A-10 A/C THUNDERBOLT II "GULF WAR"

Depleted-Uranium domination

Iraq had over half a million front line troops in Iraq and Kuwait at the beginning of Operation Desert Storm along with tanks, APCs, and SCUD missile launchers. Despite this massive force, it took Coalition troops only 100 hours to pacify all of Iraq and Kuwait, devastate the Iraqi military, and secure all its objectives. From the air, the A-10 wreaked havoc on Iraqi columns with its depleted-Uranium munition armed 30mm rotary cannon. Whole columns of tanks were left burning on Iraq's roads before ground forces arrived. **Kit features** four sets of decals.

1376 ITAS1376 Total Parts: 127 Skill Level: 3 Length: 8.9 in (226mm)



ITALERI



1/48 RF-4E/F PHANTOM II

Sixties standout

At its introduction the Phantom II was a revolution in aviation design. It captured sixteen world records for flight performance, but its practical application on the battlefield was unquestioned as well. Leading off its list of combat features was an 18,000 lb effective weapons load—more than the four-engine B-17 of WWII. What the Phantom lacked in maneuverability, it made up for in sheer speed—breaking Mach 2 with ease. **Kit features** decals for Israeli, German, Turkish, Japanese, and Greek versions.

2737 ITAS2737 Total Parts: 100 Skill Level: 3 Length: 15.7 in (400mm)



EUROPEAN TRACTOR TIRES AND RIMS

Keep it rolling

Contains two front tires and rims size 385/65 R22.5 as well as five rear rims and tires size 315/80 R22.5. Perfect for European-style tractor trucks.

3909 ITAS3909



1/24 CLASSIC WESTERN STAR 4964

Stellar long-nosed hauler

The Western Star 4964 is a powerhouse of heavy hauling but it's also more than that. For thousands of truckers the world over, the cab of these trucks is a home away from home. Its stylized paintjob and the bluff, powerful lines of the truck itself are a point of pride amongst long haulers. **Kit features** a detailed Western Star 4964 and full decals.

3915 ITAS3915 Total Parts: 300 Skill Level: 3 Length: 13.9 in (352mm)



1/9 1964 MV AUGUSTA – 4 CYLINDERS 500CC

9-Time world champion

This Cardan-transmission motorcycle, first built in 1950, reached peak performance when it adopted chain transmission and a telescopic front fork. It was ridden by some of the world's most famous motorcycle racers. Thanks to them, this near-unbeatable motorcycle dominated the 500 cc category from 1956 to 1965, winning 9 world titles. It continued competing until 1966 when it was "retired" to make way for a new 3-cylinder motorcycle. The model, pre-molded in the original colors and with chrome-plated parts, also features working suspension and rubber tires.

4630 ITAS4630 Skill Level: 4 Length: 8.3 in (210 mm)

1/72 ZULU WARS BRITISH INFANTRY

Colonial conquerors

In 1879, the British Empire stretched all across the world and, by diplomacy, intrigue, and force was spreading even further. British Infantry projected the power of the queen to all corners of the globe. In countless colonial engagements, the British Infantry proved their ability to hold out against incredible odds with a combination of determination and firepower. The Anglo-Zulu War saw several stunning reversals for this all-conquering force as the Zulu consistently employed better tactics and superior numbers to stymy British efforts. **Kit features** fifty figures.

6050 ITAS6050 Total Parts: 50 Figures Skill Level: 1



1/72 ZULU WARS ZULU WARRIORS

Warriors born

While the rest of the world had moved on to rifles, wagons, and railroads, the Zulu were a feudal-militaristic society based around drafted age groups of spearmen ruled by a king. They employed a simple yet effective tactic represented by the buffalo head for overwhelming foes in the open—using it to great effect at the Battle of Isandlwana. However, their system had no method for dealing with fortifications and, after a series of crushing defeats, Zululand was dismantled by the British. **Kit features** 48 warriors with shields and spears.

6051 ITAS6051 Total Parts: 48 Figures Skill Level: 1



1/35 MODERN BATTLE ACCESSORIES

Make it real

Rockets, bombs, bullet cases and artillery shells, for sure, but the equipment of war doesn't stop there. No, you need fuel tanks and water tanks, and radios. Air tanks, air-to-air missiles, spools of wire and claymore mines. Toolboxes, tank tread traction mats, tarps, tents, tungsten-cored fin stabilized armor piercing discarding sabot shells. For a war, you need it all. This set has it all.

6423 ITAS6423 Total Parts: 208 Skill Level: 1



1/35 JAGDPANZER 38(t) "HETZER"

Late war light destroyer

A casemate-mounted 75mm gun was the Jagdpanzer 38(t)s most distinctive feature. This comparatively light gun was sufficient for penetrating all but the thickest Allied tanks, making the Hetzer an effective tank destroyer. Adding to its draw was the relative simplicity with which it could be constructed and its low cost. Almost three thousand were produced compared with less than 500 Tiger II tanks. On defense, Hetzers were hard to spot and, if positioned properly, hard to knock out. **Kit features** German WWII decals.

6531 ITAS6531 Skill Level: 3 Length: 7.2 in (182 mm)





1/35 PZ.KPFW.V PANTHER AUSF.G LATE

Best of the blitzkrieg

Lighter, faster, and cheaper to produce than the Tiger I, the Panther was designed to take on numerically-superior Allied tanks and turn the tide of war back in Germany's favor. The first test of the design came at Kursk, a singularly unforgiving testing ground that saw most of the original tanks destroyed by enemy fire or suffering mechanical breakdowns. Despite impressive Panther kill tallies, Kursk was a bitter defeat for Germany. After Kursk the Panther was used in a series of defensive actions on the East and West fronts, unsuited to its design.

6534 ITAS6534 Total Parts: 290 Skill Level: 5 Length: 10 in (253mm)

Plastic Models

Bandai Gundam® 1/100 Gundam Kimaris

Iron-Blooded Orphans

Warrior, knight, weapon

A warrior knight themed Gundam from the "Calamity War" that shares the same mechanical frame as the Gundam Barbatos. Comes with a massive spear-like weapon "Gungnir", slash disks, and folding knife that can also be stored on the back. Legs can open up to reveal booster units and model includes other features not found on the HG model! **Kit features** runners, decals, and full instructions.

BAN203224 BANS0224

Bandai Gundam® HG 1/144 Dom Test Prototype

Gundam The Origin

Mecha mastery

Part of the project "Mobile Suit Discovery", an attempt to document the secret development stories of popular mecha from the Gundam mythos, the Dom Test Prototype is the missing link between the Zaku and Dom in "Gundam The Origin". Features a hybrid body design that shows the lineage of the Dom's precursors including the ability to swap out different chest plates for its variants and moveable monoeye. **Kit features** a giant beam bazooka and heat saber plus runners, stickers, and full instructions.

BAN203226 BANS0226

Bandai Gundam® HG 1/144 Gundam Griep

Gundam Wing G-Unit

Defend the colony!

Piloted by Odin Bernett in the concurrent Gundam Wing G-Unit side story to the world-famous "Gundam Wing" season, the Gundam Griep is an advanced, morphing weapon system with a wide array of particle and beam weapons and one tough pilot. It's one of 4 G-Unit mechas reproduced once every 3 years—but never before released in the US! Get these models in your store and cash in on mecha mania!

BAN059430 BANS0430



Bandai Gundam® HG 1/100 Gundam Deathscythe Hell TV Version

Death is coming

Duo Maxwell expertly pilots the devastating Gundam Deathscythe Hell in “Endless Waltz”. Its cloaking capability, maneuverability, and brutal energy scythe make it one of the most fearsome Gundams ever to take war to the stars. Get your hands on one of these highly elusive gundams before it disappears.

BAN49513 BANS0513



Bandai Gundam® 1/100 Gundam Gusion Iron-Blooded Orphans

Mega mecha impact

Heavily armored and armed with a rocket-powered hammer, the Gusion Gundam is the ultimate breaker weapon. It is able to withstand some of the most powerful attacks unleashed by other Gundams and deliver armor-crushing blows with its hammer in return. Despite its superficial resemblance to a Man Rodi, the Gusion is a full Gundam piloted by the psychotic leader of the Brewers in “Iron-Blooded Orphans”.

BAN201894 BANS1894



Bandai Gundam® HG Iron-Blooded Orphans 1/144 MS Option Set 4

Upgrade your attack

A special pack of various custom parts for customizing Mobile Suits from the Gundam Iron-Blooded Orphans animated series or other 1/144 GunPla. Includes one large, custom booster and new Graze sword weapon. A special Mobile Worker can also be built. **Kit features** runners, stickers, and instruction manual.

BAN204180 BANS4180



Bandai Gundam® SD EX-Standard 00 Gundam “Gundam 00”

Chibi champion

Part of the new SD Gundam EX-Standard product line the 00 Gundam has been recreated with an emphasis on articulation and enhanced proportion. Weapons include GN Swords and shields. **Kit features** runners, stickers, and instruction manual.

BAN204936 BANS4936



Bandai Gundam® Gundam Iron Blooded Orphans Rylcot (10)

Collectible cool

As a key chain charm or as a collectible, these new “RYLCOT” acrylic mascots are incredibly cool! They feature characters from Mobile Suit Gundam Iron-Blooded Orphans and you can choose to carry them with you everywhere or display them in their clear box! **Characters include** Mikazuki Augus, Orga Itsuka, Kudelia Aina Bernstein, Atra Mixta, McGillis Faree, Gaelio Bauduin “Biscuit”, and Ein Dalton!

05691 BANS5691





Bandai Gundam® Character Stand Plate McGillis Fareed

Get Gjallarhorn's golden boy

In Gundam Iron-Blooded Orphans, McGillis Fareed is an inspector for Gjallarhorn as well as an exceptional Gundam pilot and the son of one of Gjallarhorn's highest ranking families. He's a seemingly cold, tireless worker with an analytic mind capable of unraveling problems that leaves others baffled. All told, it's easy to see why he's one of the most popular characters of this segment of the series. **Kit features** a decorated base plate for your Gundam.

BAN0206010 BANS6010

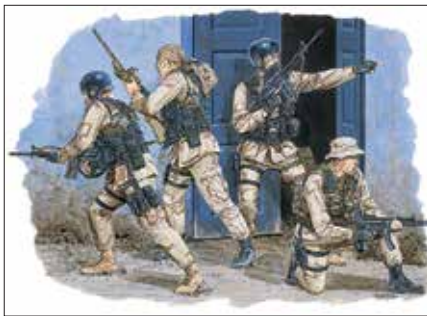


Bandai Gundam® HG 1/100 Wing Gundam Zero TV Version

Foundation of the future

The eponymous Wing Gundam Zero of "Gundam Wing" along with its aptly named pilot and lead character "Heero" was America's first introduction to Gundams. It's a transforming, beam-rifle and beam saber equipped mech designed for both in-atmosphere and space combat. As the first connection of fans to the genre, it also holds a powerful place in collector's hearts. No collection is complete without it, get yours today!

BAN48288 BANS8288



Dragon Models® 1/35 Delta Force Somalia 1993 (4)

War for peace

After the collapse of the Barre government and the ensuing Somali Civil War, a UN resolution was passed that sought to return a semblance of stability to a country that was populated by numerous militias. Part of that operation involved sending Delta Force—then top secret US Army operatives—into Mogadishu to remove Mohamed Farah Aidid from the equation. In the ensuing chaos, Rangers and Delta operators held off thousands of local militia through a long day and night. **Kit features** four Delta Force figures.

3022 DMLS3022 Total Parts: 4 Figures



Dragon Models® 1/72 M1A2 Abrams 4th Infantry Division

American armor

Honoring the 4th Infantry Division's motto "Steadfast and Loyal", the M1A2 Abrams is an exceptionally rugged fighting vehicle. Its combination of depleted uranium armor and significant firepower make it an ace in the hole for a broad variety of engagements. Adding to its effectiveness is its gas turbine power pack which is both extraordinarily powerful and quick to remove for maintenance or repairs. Abrams tanks have supported 4th Infantry Division forces in Iraq and Afghanistan during the conflicts there. **Kit features** one M1A2 Abrams with 4th ID decals.

7216 DMLS7216



Dragon Models® 1/72 M2A2 Bradley with ERA

RPG protection

Explosive Reactive Armor (ERA) provides standoff protection against specialized anti-tank weapons, like many RPGs, which use a shaped warhead to blow through traditional RHA like tinfoil. The Bradley Infantry Fighting Vehicles is a combination of combat vehicle and troop transport with a 25mm chain gun, TOW missile launcher, and six-man squad carrying capacity. The M2A2 variant of the Bradley includes significant ERA upgrades to the standard aluminum armor to make the vehicle more survivable. **Kit features** ERA parts, styrene tracks, TOW launcher in travel or launch position, and positional hatches/ramp.

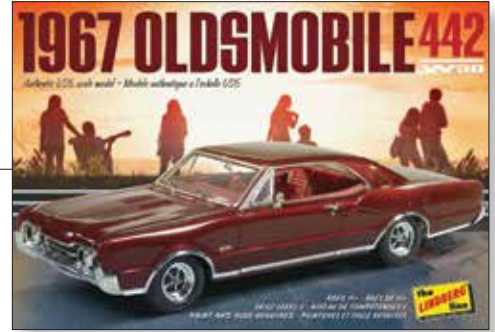
7298 DMLS7298

Lindberg Models® 1/25 1967 Oldsmobile® 442

Summer of Love standout

The Oldsmobile 442 (or 4-4-2) was more than just a car, it was a symbol of the times. It combined the sleek styling of sixties-era rides with 300hp, V8 power for muscle and looks that turned heads wherever it went. W30 versions of the 442 were the rarest of all models and clocked 0-60 times in the six second range.

HL127/12 LNDS0127 Skill Level: 2



Lindberg Models® 1/520 US Navy Tanker USS Neches

Gassing up on the go

Battleships and aircraft carriers get all the credit, but without fleet oilers like the USS Neches, operations by the US Navy would rapidly grind to a halt. These vessels provide fuel, dry stores, and a useful addition to the anti-aircraft defense of any combat group. Two vessels were named "Neches" in the US Navy. The first was torpedoed and sunk west of Pearl Harbor in 1942, the second served through World War II and Vietnam and was scrapped in 1973.

HL438/12 LNDS0438



Moebius® 1/25 1965 Plymouth Belvedere

Boxy blast from the past

The option for a 426 cu.in. Hemi V8 made the Plymouth Belvedere a force to be reckoned with. Nicknamed "The Elephant", the 426 V8 was originally designed for racing. "Street Hemi" versions were of lower quality than the racing engines but still dished out a staggering 433 horsepower. In the sleek, two-door version, that much power made well cared for Belvederes some of the most competitive muscle cars on the market. **Kit features** single or dual carb 426 Max Wedge, mag wheels, standard or drag radials and decals.

1218 MOES1218 Total Parts: 116 Skill Level: 3 Length: 8 in (203mm)



Moebius® 1/25 1972 Ford Sport Custom Pickup

For work or play

One of the most popular pickups of all time, the V8-powered 1972 Ford Sport Custom Pickup was a 2-wheel drive truck that lived up to its advertised tagline of "Works like a truck, rides like a car." Now model truck collection is complete without this classic icon of the seventies' mid-duty line leader.

1220 MOES1220 Total Parts: 130 Skill Level: 3 Length: 7.5 in (191mm)



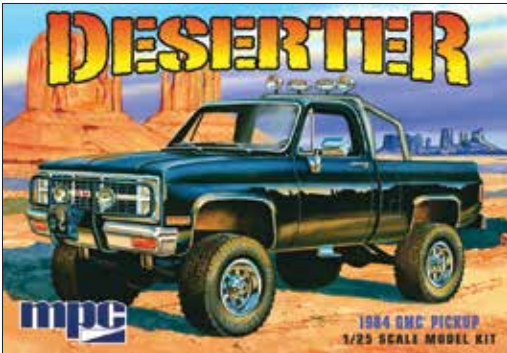
MPC® 1/25 1975 Corvette® Convertible

A 3-in-1 American classic

The legendary 1975 Corvette Convertible is coming back around for a second run at your display case! It has been restored to its full glory with gobs of performance parts and the option to build stock, custom, or racing versions. **Kit features** retooled original hood, drag slicks, injector stacks, mags, metal spring front suspension, retro decals and retro packaging.

MPC842/12 MPCS0842 Total Parts: 145 Skill Level: 2 Length: 7.5 in (191mm)





MPC® 1/25 1984 GMC® Pickup

Take it offroad

The modeler favorite 1984 GMC pickup is back by popular demand! It's available in deep black (0847) or white (0848) for experienced modelers wanting to craft a custom paint job. Off-road accessories, raised suspension, oversized tires and more make it an ideal desert rat. **Kit features** white or black moldings, oversized hollow vinyl off-road tires, roll bar with spotlights, front bull bar, spoked chrome mag wheels, detailed engine, detailed chassis, and all new illustrated packaging and decals.

MPC847/12 MPC80847/0848 Total Parts: 155 Skill Level: 2 Length: 8 in (202mm)



Tamiya® 1/24 Martini Alfa Romeo 155 V6TI

Engineered to keep you on the edge of your seat

International Touring Car Championships (ITC) enjoy worldwide popularity. It fields highly tuned 2.5L machines—the pinnacle of touring cars. For the '96 season, the Alfa Romeo 155 V6 TI was souped up with a high-revving V6 engine pumping an awesome 450hp. The Martini sponsored 155 V6 TI's were piloted by the talented drivers N. Larini and A. Nannini. Aggressive performance and eye-catching good looks make the 155 V6TI a must have. **Kit features** V6 engine, roll cage, realistic suspension and exhaust, rubber tires, and full decals.

24176 TAMS4176



Tamiya® 1/35 US Self-Propelled Gun M107 Vietnam War

Calling the lightning

A patrol is under intense fire in the jungles of Vietnam. Frantic radio calls go out over the waves, relaying coded coordinates. A battery goes into action, dropping a massive recoil-damping spade. Gunners dial in the elevation, range, and deflection. A 147lb projectile is rammed into the barrel, followed by a separate powder charge. The primer goes in, the lanyard is yanked, and somewhere, up to 21 miles away, Victor Charlie has a really bad day. **Kit features** gun, figures, accessories, full instructions, and decals.

27021 TAMS7021

Just Released

89653 MDPU9041
Model Power® N-Scale
Deluxe Heavy Weight
Freight Car Assortment (24)

Model Power® N-Scale Deluxe Heavy Weight Freight Car Assortment (24)

Load up your layout



- Knuckle couplers
- Incredible variety
- Endless durability
- 24 unique pieces of rolling stock