

GREAT NEWS[®]

GREAT PLANES MODEL DISTRIBUTORS

RADIO CONTROL • SEPTEMBER 2014

Miss *Seattle*



PLUS:

AquaCraft[®] 1/72 US Fletcher
Class Destroyer ARR

Pages 4-5

Associated New Vehicles

Pages 6-9

Great Planes[®]
Extra 300SP EP ARF

Page 10

AQUACRAFT
Models[®]
Pages 2-3

GREAT PLANES[®]
MODEL DISTRIBUTORS



Copyright 2014 Hobbico[®] 2003331 All rights reserved.

GREAT NEWS[®]

GREAT PLANES MODEL DISTRIBUTORS

GENERAL HOBBY • SEPTEMBER 2014

AUDI R8



Page 2

PLUS:

New Plastic Models

Pages 2-10

JTT Scenery and Brictek

Page 14

New Estes Rockets

Page 17

GREAT PLANES[®]
MODEL DISTRIBUTORS

UNLIMITED RACING EXCITEMENT!

- Ultra-fast hydroplaning
- Performance-engineered hull
- 2200kV inrunner brushless motor
- Water-cooled 30A brushless ESC & motor jacket

Miss Seattle

Ready-To-Run Brushless Unlimited Hydroplane



A double-cover hatch is easily removable for quick access to the motor, battery and radio gear. The unique cinch motor coupler reduces strain on your drive system and lowers the chance of failures.



When you hit an underwater obstruction, the rudder on the U-16 disengages to prevent damage to the transom.



The U-16 Unlimited Hydroplane features a water pick-up for optimal cooling.

A mini hydro turn fin controls handling in the straightaways and right-hand turns.



AQUB1822 Miss Seattle U-16 Brushless Unlimited Hydroplane RTR
Hull Length: 16.75 in (425 mm)
Overall Length: 18 in (458 mm)
Width: 8.5 in (216 mm)
Height: 4 in (102 mm)
Weight: 17.1 oz (485 g)
Requires: 11.1V 1000mAh LiPo battery, charger, safe charge sack & 4 "AA" batteries



From the Experts:

The Miss Seattle U-16 brings the excitement of Unlimited Hydroplane Racing to a lake or pond near you! A water-cooled 2200kV inrunner brushless marine motor delivers the power for accelerating to planing speeds, and the performance-engineered ABS hull does the rest! Just drop in the battery of your choice, tape the hatch and take off!

Long story short...

Kick up some spray with the Miss Seattle hydroplane — it's high-speed boat racing action with unlimited attitude!



RULE THE WATERWAYS WITH THIS IMPRESSIVE WARSHIP

1/72 Scale Fletcher Class Destroyer



www.gpdealer.com

www.gpdealer.com



At over 5' long, this Fletcher Class Destroyer has real presence on the water.



The model's scale touches include an authentic-looking bridge.



The Fletcher Class Destroyer is powered by two 550-size motors, which are included and already installed.
(ESC, Fan not included)



The rear of the boat features mine laying racks and anti-aircraft guns.

- Modeled after a U.S. warship that served during World War II and the Korean War
- Pre-painted fiberglass hull
- Lots of amazing detail, including 5" main guns, torpedo launchers, depth charge launchers, anti-aircraft guns, machine guns, railings, ladders, radar mast and much more
- Solid shaft drives with brass stuffing boxes
- Counter rotating props
- Custom wood boat stand for static display
- Run times can exceed 60 minutes with recommended batteries

From the Experts:

From its imposing length (over 5 feet!) to its striking scale armament, AquaCraft's Fletcher Class Destroyer really stands out on the water. Much of the assembly is already done, so you can be carrying out missions in no time. The fiberglass hull and solid shaft drives are just two examples of the ship's quality components, and the amount of scale detail will have you wanting to proudly display this vessel when not out sailing!

Long story short...

As the captain of this 1/72 scale Fletcher Class Destroyer you'll instantly command respect from all other R/C boats!



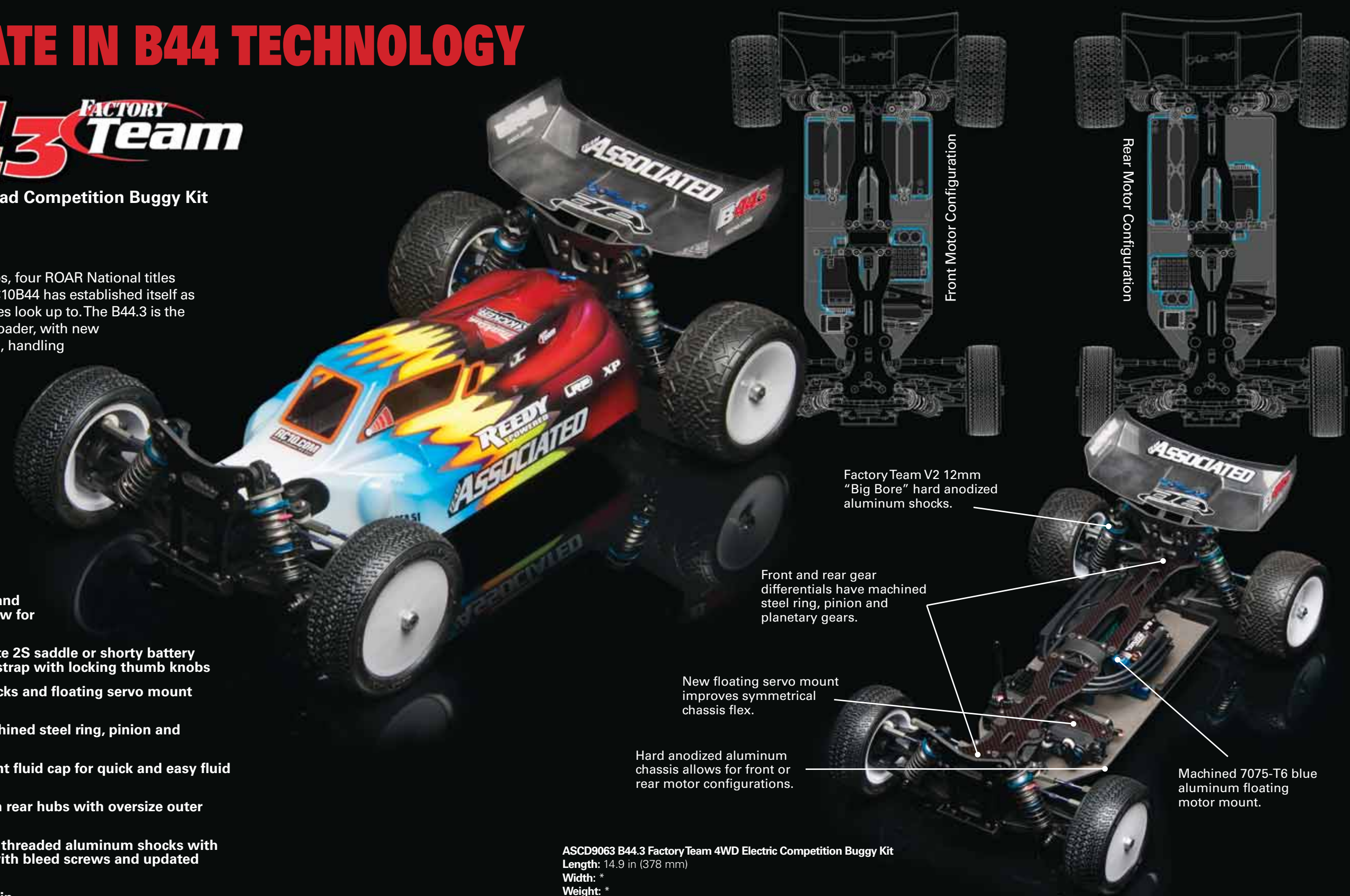
THE ULTIMATE IN B44 TECHNOLOGY

B44.3 FACTORY TEAM

1/10 Scale 4WD Electric Off-Road Competition Buggy Kit

With three IFMAR World Championships, four ROAR National titles and countless regional victories, the RC10B44 has established itself as the kit that all other 4WD electric buggies look up to. The B44.3 is the latest evolution of this world-class off-roader, with new high-performance parts that take speed, handling and adjustability to a new level!

- Hard anodized aluminum chassis and 7075-T6 floating motor mount allow for front or rear motor configurations
- Molded battery trays accommodate 2S saddle or shorty battery packs and feature a quick-change strap with locking thumb knobs
- Front and rear carbon-fiber top decks and floating servo mount improve symmetrical chassis flex
- Front and rear gear diffs have machined steel ring, pinion and planetary gears
- Center gear diff has an independent fluid cap for quick and easy fluid or gear changes
- Factory Team 0° 7075-T6 aluminum rear hubs with oversize outer bearing
- Factory Team V2 12mm "Big Bore" threaded aluminum shocks with 3mm shock shafts, molded caps with bleed screws and updated O-rings
- Full CVAs and ball bearing drivetrain
- Factory Team 12mm blue aluminum rear clamping hexes and 12mm hex rear wheels
- Factory Team blue titanium turnbuckles, aluminum servo mounts, aluminum shock pivot balls and rear anti-roll bar are included
- JConcepts Finnisher X-flow B44 body with 6.5" high downforce wing



Factory Team V2 12mm "Big Bore" hard anodized aluminum shocks.

Front and rear gear differentials have machined steel ring, pinion and planetary gears.

New floating servo mount improves symmetrical chassis flex.

Hard anodized aluminum chassis allows for front or rear motor configurations.

Machined 7075-T6 blue aluminum floating motor mount.

ASCD9063 B44.3 Factory Team 4WD Electric Competition Buggy Kit

Length: 14.9 in (378 mm)

Width: *

Weight: *

Wheelbase: 11.2 in (284 mm)

*Final width and weight will vary with the actual electronics and tires used to complete the kit.



Long story short...

The B44.3 Factory Team Kit continues the winning legacy of the RC10B44 — which is bad news for the competition!



NEW PRODUCT

A TRUE TOURING CAR CLASSIC!

APEX

ER
SCION RACING

FR-S

Rocket Bunny
Aero Kit

Ken Gushi



Features front and rear sealed metal gear differentials and a tough aluminum drive shaft.

- All-wheel drive chassis that accepts NiMH or LiPo batteries
- Powerful Reedy 3300kV 540 brushless motor
- Water-resistant XP SC500-BL brushless speed control with high-current T-plug connector (2S-3S LiPo compatible)
- High-grip tires mounted on stylish 10-spoke wheels
- XP 2.4GHz radio system with XP metal gear steering servo
- Reedy Wolfpack 6-cell NiMH battery with AC peak detection wall charger included
- Adjustable fluid-filled, coil-over tuned shocks
- Steel CVA drive axles front and rear
- Metric hardware and ball bearings throughout
- Scion Racing FR-S Rocket Bunny replica body

ASCD0113 Qualifier Series Apex Scion
Racing 1/10 EP 4WD Touring Car RTR
Length: 17.25 in (438 mm)
Width: 7.5 in (190 mm)
Weight: 3.9 lb (1760 g)
Wheelbase: 10.2 in (259 mm)

ae
TEAM ASSOCIATED

Lexus and all associated marks, emblems and designs are the intellectual property of Toyota Motor Corporation and are used with permission.

Long story short...

You're sure to turn heads at the track with this scale version of Ken Gushi's Scion Racing FR-S Rocket Bunny Aero Kit on-racer!

A STYLISH COUPE WITH PLUS PERFORMANCE

APEX

LEXUS
RC F



Ready-To-Run Brushless 4WD
Electric Performance Coupe

QUALIFIER
SERIES



The high-grip racing tires come mounted on Lexus RC F 20-spoke replica wheels. Detailed brake rotors and calipers are visible.

- Fully assembled all-wheel-drive chassis that accepts NiMH or LiPo batteries
- Powerful Reedy 3300kV 540 brushless motor
- Water-resistant XP SC500-BL brushless speed control with high current T-plug connector that's 2S-3S LiPo compatible
- XP 2.4GHz radio system with XP metal-gear steering servo
- Reedy Wolfpack 6-cell NiMH battery and AC wall charger
- Adjustable fluid-filled coil-over tuned shocks

- All-metal gear transmission with sealed diffs
- Steel CVA drive axles front and rear
- Metric hardware and ball bearings throughout
- Lexus RC F performance coupe replica body available in blue or white

ASCD11** Qualifier Series Apex Lexus RC
F 1/10 EP 4WD Performance Coupe RTR
Length: 17.5 in (444.5 mm)
Width: 7.5 in (190 mm)
Weight: 3.9 lb (1760 g)
Wheelbase: 10.2 in (259 mm)

ae
TEAM ASSOCIATED

Lexus and all associated marks, emblems and designs are the intellectual property of Toyota Motor Corporation and are used with permission.

Long story short...

Team Associated does the Lexus RC F Performance Coupe proud with this stunning Apex Qualifier Series scale replica!



NEW PRODUCT

A STANDOUT AEROBATIC "HOT ROD"

EXTRA
300SPAlmost-Ready-To-Fly Electric
Sport Aerobatic Plane

- Strong, lightweight design
- Painted fiberglass parts
- Large battery hatch
- Removable wing panels

With its stunning multi-color MonoKote trim scheme, the Extra 300SP really stands out — at the flight line and in the air!

**GPMA1188 Extra 300SP EP ARF****Wingspan:** 50 in (1270 mm)**Wing Area:** 478 in² (30.8 dm²)**Weight Range:** 3.5-4.0 lb (1590-1810 g)**Wing Loading:** 16-19 oz/ft² (46-49 g/dm²)**Length:** 47.75 in (1215 mm)**From the Experts:**

With graceful lines and a wide performance envelope, the Extra is a favorite at airshows and competitions, and Great Planes has replicated the 300SP in exquisite detail. Final assembly is easy and straightforward, and its aerobatic potential is impressive — including 3D maneuvers when equipped with a 4S LiPo battery!

Long story short...

Great Planes' Extra 300SP is long on looks, with plenty of performance!



PRECISION PATTERN PERFORMANCE



Almost-Ready-To-Fly EP/GP Aerobat

- Engineered for precise aerobatic maneuvers and fun sport flying
- Lightweight balsa/ply construction with fiberglass cowl and wheel pants
- Two-piece wing for easy transportation and storage
- Designed for electric motor, 2- or 4-stroke glow engine power



GPMA1232 Sequence 120 EP/GP Aerobat ARF

Wingspan: 71.5 in (1815 mm)

Wing Area: 836 in² (53.9 dm²)

Weight Range: 9.75-10.75 lb (4420-4870 g)

Wing Loading: 27-30 oz/ft² (82-92 g/dm²)

Length: 73 in (1855 mm)



The large hatch removes quickly for easy access to the plane's interior.

From the Experts:

The Sequence 1.20 excels in crisp, smooth handling and arrow-straight tracking — precision maneuvers found on top-level competition planes. With its slightly smaller dimensions and use of less expensive power systems, the Sequence 1.20 is ideal for intermediate-level events...or simply being the best-flying bird in your hangar!

Long story short...

Aerobatic enthusiasts now have a new "go-to" model...the Sequence 120 ARF!



DOMINATE THE SHORT COURSE COMPETITION!

Six Pack and Picket Short Course Tires

- Made to fit popular short course trucks, including the Traxxas® Slash™, HPI® Blitz, Associated® SC10 and ARRMA® models
- Pre-mounted sets feature sharp-looking black wheels and high-grip soft C2 compound tires; tires are also available separately
- Ideal for a wide range of track conditions, including loose and hard-packed surfaces as well as pavement and grass
- Durable, color-coded sidewall markings make for easy identification



See the complete line of Duratrax Performance Tires at gpdealer.com!



Long story short...

Duratrax Performance Tires give your SC truck the race-winning advantage — and they're value-priced too!

THE POWER YOU NEED FOR HARD-CHARGING 4X4 PERFORMANCE

Crusher/4PHD Brushless ESC/Motor System

- The 4PHD 4-pole, 12-slot motor meets the high power demands of today's extreme conditions and relentless bashing
- Packs the same punch as larger 550-size, 2-pole motors, featuring a Neodymium rotor wrapped in Kevlar and high-RPM ABEC ball bearings
- With its Simple Tuner interface, the sensor-based Crusher ESC provides crisp, smooth throttle response
- Other great Crusher features include on-board programming, a sealed case, Auto-Detect LiPo cutoff, Dynamic Timing and thermal protection



NOVC3087 Crusher/4PHD 4-Pole 4x4 SCT Brushless System (2S)
NOVC3510 4PHD SCT 4x4 Brushless Motor 4600kV



Long story short...

The Crusher/4PHD Brushless System is ready to power your project today with a great blend of performance and easy-to-use features!



CSEM3100
Talon 120HV
120A 12S ESC

POWER IN ALL THE RIGHT PLACES

Talon 120HV 120A 12S ESC

- No need for an external BEC or extra wiring — a 20A peak BEC with selectable 6V or 8V output voltage is built-in
- Capable of up to 6000W of continuous power
- Sleek aluminum case looks sharp and keeps components cool during high power demand situations
- Compatible with Castle Link USB adapter for extensive programming capability and software functions



ESTE4720
Blade Guard
for Proto-X

Estes Control® Blade Guard for Proto-X

Stylish protection for your quadcopter!

- Made from durable material
- Lightweight and easy to install
- Designed to fit the popular Proto-X nano quadcopter

Quadcopter not included



HRCP1070
X1 Pro/ePowerbox Combo

Hitec® X1 Pro/ePowerbox Combo

A power pair for the best in battery maintenance

- The X1 Pro DC/DC Multi-Charger and ePowerbox 17-Amp Power Supply are available in a convenient, portable combo
- The X1 Pro delivers 180 watts to Lithium-based, NiCd, NiMH and Lead-Acid batteries
- An adjustable charge current rate of 0.1-16 amps meets any modeler's demand in the workshop, at the field or in the pits
- The extremely efficient ePower converts 100-240 AC volts in to 17 amps of continuous 13.8 volts of DC power, making it compatible with DC chargers such as the X1 Pro
- Docking capability allows both units to connect directly to each other with no wires

INCREDIBLE PERFORMANCE IN 1/10 AND 1/8 SCALE!

ARRMA®

DESIGNED FAST DESIGNED TOUGH

No matter what your experience level is, there's a fast, super-tough ARRMA vehicle that's perfect for your kind of racing and bashing! On-road, off-road, whatever the conditions, an ARRMA model is your ticket to sure-fire fun and excitement!



RAIDER MEGA
ARAD35**

30+
MPH*



TYPHON 6S
ARAD80**

60+
MPH**

RAIDER MEGA

BRUSHED POWER SYSTEM

1/10 Scale Brushed 2WD RTR Desert Buggy

The MEGA RTR lineup offers amazing performance and super-tough durability — and all at an incredible price. With four MEGA vehicles to choose from, there's sure to be one that'll fit your needs and your budget!

- High-quality composite parts that stand up to all conditions
- A waterproof MEGA power system for consistent performance in unforgiving conditions
- A durable, factory-equipped gearbox for trouble-free operation
- Equipped with an ARRMA 2.4GHz radio system that delivers worry-free control
- Pre-mounted dBoots™ tires offer superior handling
- A pre-painted polycarbonate body gives your MEGA vehicle ultra-cool looks

*30+ mph achievable with recommended optional battery and gears.

TYPHON 6S BLX

BRUSHLESS POWER SYSTEM

1/8 Scale Brushless 4WD RTR Speed Buggy

If you're ready to experience even more impressive size, torque and toughness, then step up to the TYPHON 6S Speed Buggy!

- A factory-installed 2050kV BLX brushless motor offers incredible power
- Electronic components are fully waterproof
- Designed to be 6S LiPo compatible for unstoppable speed
- Race-spec center diff with ultra-strong ARRMA spur gear
- Tough, aerodynamic body with printed trim scheme and black nylon wing

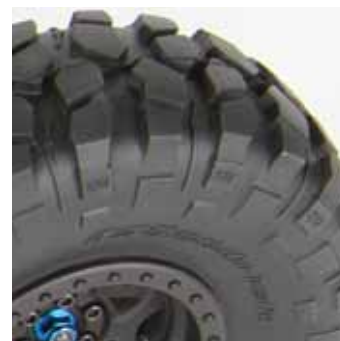
**Maximum speed achievable with recommended gears and 6S LiPo battery.

READY TO RUN

YETI™ 1/10th SCALE ELECTRIC
4WD #AX90026



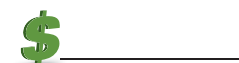
BFGoodrich BFGoodrich® Tires and KRAWLER™ T/A® Trademarks are used under License from Michelin



- Hi-Lo transmission with all metal internal gears
- Independent front suspension and rear AR60 OCP-Axle™
- 3150KV 4-pole brushless motor provides massive amount of power
- 2.2 BFGoodrich Krawler™ tires (R35 compound)
- Officially licensed 2.2 Walker Evans Racing IFD™ Wheels
- Waterproof Vanguard ESC - 3S LiPo
- Waterproof receiver box integrated into bottom of chassis
- WB8 HD Wild Boar rear driveshaft with updated larger diameter design
- Adjustable aluminum shock bodies

AXID9026 - Yeti™
Length: 19.5" (495mm)
Width: 12.3" (312mm)
Height: 7.7" (195mm)
Wheelbase: 14.2" (360mm)
Ground Clearance: 2" (50mm)
Weight: 6.51lbs (2.9kg)

For additional items see a complete list at www.GPDealer.com



GET HOPPED UP...AND GET FASTER!

Team Durango buggies are already proven winners on a wide range of demanding track surfaces — and that's right out of the box. Now imagine how awesome those off-roaders would be when equipped with genuine Team Durango option parts! On these pages you'll find a super assortment of the same high performance

components used by Pro Team drivers and renowned champions Ryan Lutz and Travis Amezcua. If you want to race like a pro, start with a Team Durango vehicle, and then max out your model's potential with any of these super accessories!

DEX210V2

1/10 Scale 2WD Electric Buggy Kit

TDRC0011

DEX410V4

1/10 Scale 4WD Electric Buggy Kit

TDRC0122

- TDRC3630 Gear Diff Set
- TDRC7130 Vented Slipper Plate Set
- TDRC3780 Heatsink Motor Plate
- TDRC8324 Nose Weight 30g
- TDRC8320 Nose Weight 15g
- TDRC8244 Titanium Turnbuckle 3 x 43mm (2)
- TDRC5841 Big Bore Taper Pistons (4)
- TDRC3804 Aluminum Rear Hub Carriers
- TDRC7810 Aluminum Rear Suspension Hanger 3°

- TDRC1220 Balancing Weight Set
- TDRC3480 Flex Brace System
- TDRC3600 Aluminum Rear Gearbox Holder
- TDRC2240 Aluminum Caster Block 21° (Left)
- TDRC2242 Aluminum Caster Block 21° (Right)
- TDRC5843 Big Bore Taper Pistons (4)
- TDRC8244 Titanium Turnbuckle 3 x 43mm (2)
- TDRC5445 Big Bore Aluminum Shock Cap Set

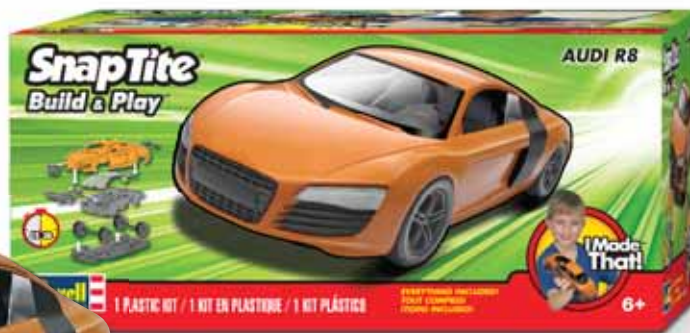


TURN HERE FOR GENERAL HOBBY PRODUCTS



1/24 SCALE AUDI R8

Easy to build, fun to run!



85-1687
RMXS1687
Total Parts: 13
Skill Level: 1
Length: 7.25 in (184 mm)

Class. Some cars have it, some just don't. The Audi R8, definitely does. It's a sleek and sporty two-seat sports car powered by a 4.2 liter V-8 that's easily as powerful as it is beautiful. With its Quattro all-wheel-drive system, an aluminum monocoque chassis and electronically-adjustable suspension, it's one of the most technologically advanced cars ever to roll off a mass-production line. Deep down it's a pro racer, based on a five-time Le Mans winning prototype and made to be fast. Now you can build yours fast! This skill level 1 Build & Play kit goes together faster than a good race team can pull off a pit stop, and it looks great! **Kit features** snap-together construction and rolling wheels.

1/25 HOT ROD HYDRO

Thrill seeker's favorite

More is better. More power, more speed, more boat, more babes, and more time on the water. You can get a 'speed' boat from anywhere, but where's the fun in that? For a true hot-rodder's dream boat, you need to get a big, bad V-8, drop it in a flush dart of a boat and tell the skier to hold on tight. **Kit features** detailed big-block V-8 and drive line, full interior, boat trailer and water skis.



85-0392 RMXS0392 Total Parts: 120 Skill Level: 2 Length: 8.8 in (224 mm)

1/25 FORD® F-150 SVT RAPTOR

Off-road omnipotence

The last passenger vehicle truly capable of going from the most desolate desert to the downtown drag with no conversions was the horse. Now, the Ford Special Vehicles Team has designed a truck capable of tackling some of the most intense off-road terrain in the world while being equally comfortable on the flat asphalt of Main Street; it's the SVT Raptor. Standing stock still, the Raptor is an impressive vehicle, but crank up the V-8 and the Raptor really stuns. **Kit features** suspension detail, separate pickup bed, full interior and sunroof.



85-1977 RMXS1977 Total Parts: 48 Skill Level: 1 Length: 8.8 in (224 mm)



REVELL 1/32 M42 TWIN FORTY "DUSTER" RENWAL

Cleaning house

Produced from 1952-1959 as anti-aircraft artillery, the twin 40mm Bofors guns of the M42 "Duster" were designed to sweep aircraft out of the sky. With the advent of jet engines, however, it became increasingly difficult to down planes. So the army did what it does best, it improvised. On the battlefields of Vietnam, the Duster was pressed into a point-defense role. Few enemies wanted to confront the awesome firepower of the Duster which could fire 240 40mm shells every minute. **Kit features** five figures, interior detail, storage bins, and tool pack.

85-7822 RMXS7822 Total Parts: 175 Skill Level: 2 Length: 7.1 in (179 mm)



MONOGRAM NEW RELEASES



1/24 BLUE BANDITO 1929 FORD STREET ROD

Bump down to the beach in the Blue Bandito

Surf's up! It's time to get down to the beach, and the best way to get there is in the Blue Bandito. Throw the dive gear and the boards in the back of gramp's souped-up Model A, fire up the six carburetors and all eight cylinders, then roar down to the beach for a full day of fun above and below the waves! **Kit features** detailed V-8 with six carbs, surfing and free diving gear, and separate top and pickup bed covers.

85-4020 MONS4020 Total Parts: 117 Skill Level: 2 Length: 6.4 in (162 mm)



1/24 BLACK WIDOW HOT ROD

Scary fast

For decades, the Ford Model T was one of the most used cars in the world. Now, it's back for vengeance. The Black Widow boasts a 1927 Ford Pickup body with a standard windshield and radiator, but that's where the similarity to the original ends. The rest of this street rod is based on a long and low chassis with moon disk wheels and a triple-carb V-8 ready to smoke anything at the track. **Kit features** a detailed engine with ribbed, chromed rocker covers; optional top and fenders; plus decals with pinstripes, spider webs, flames, or race numbers.

85-4324 MONS4324 Total Parts: 55 Skill Level: 2 Length: 5.9 in (149 mm)



REVELL OF GERMANY NEW RELEASES



1/76 BRITISH 8TH ARMY WWII

Monty's Mediterranean marauders

Formed in 1941 from the remnants of the Western Desert Force, the British 8th army was one of the most pivotal units of the war. The doughty fighters of the 8th, soldiers drawn from all over the British Empire, first stopped, then encircled, and finally defeated the vaunted German Africa Korps. Their victories helped swing the tide of war against the hitherto undefeated Germans. After Africa, the 8th Army participated in the invasions of Sicily and Italy. **Kit features** 44 figures in various poses.

02617 RVL2617 Total Parts: 52



1/32 SUPERMARINE SPITFIRE MK. IIA

Ready for the fray

Long before America entered World War II, the Spitfire Mk. II was already fighting the Nazis. Its combination of improved propeller, more powerful engine and better pilot armor gave Britain's defenders a better chance against advanced German fighters. Though many other types were to come, it was the Mk I and II that broke the Luftwaffe in the crucial days during and just after the Battle of Britain. Nearly one thousand were produced in a shadow factory at Castle Bromwich. This **kit features** detailed parts and period markings.

03986 RVL3986 Total Parts: 165 Skill Level: 4 Wingspan: 13.8 in (351 mm)



© R.L. Ward

1/72 SCALE F-16C FIGHTING FALCON®

Turkish delight

Turkey is just one of dozens of countries that have taken advantage of the F-16 Fighting Falcon's astounding power. This particular Turkish Air Force variant is tasked with suppressing enemy air defenses. A sophisticated targeting system guides the Falcons to range, the weapons do the rest. Cannons, rockets, missiles and bombs can all be fielded from the Falcon with a precision and in such profusion that target destruction is virtually assured. Plus, they just look spiffy. This **kit features** a fully-loaded F-16C in a detailed livery known as Solo Türk.

04844 RVL34844 Total Parts: 126 Skill Level: 3 Length: 8.4 in (213 mm)



HASEGAWA NEW RELEASES



1/72 SCALE MITSUBISHI® G4M2 TYPE 1 (BETTY) MODEL 22 "RYU UNIT"

Intrepid IJN intimidation

Distinguished by its light weight and long-range performance, the G4M2's large size and lack of armor made it a conspicuous target. However, a 20 mm Type 99 cannon inside the tail turret helped it hold its own against American fighters. This limited edition **kit features** three decal marking options: 1. IJN 761st NFG "Ryu Unit," Code: Ryu-41, Peleliu, Palau Islands, March 1944; 2. IJN 761st NFG "Ryu Unit," Code: 76 (Yo-365), Peleliu, Palau Islands, March 1944 and 3. IJN 761st NFG "Ryu Unit," Code: 43, Peleliu, Palau Islands, March 1944.

02112 (Limited Edition) HSGS0112 Total Parts: 160 Skill Level: 3

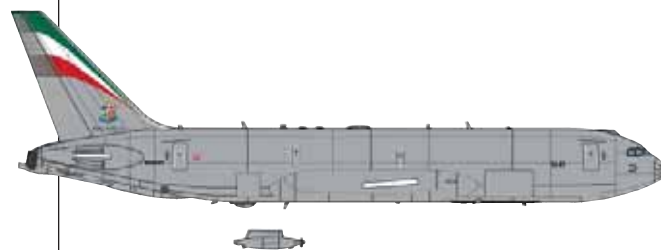


1/200 SCALE KC-767 "WORLD TANKER" TWO KIT COMBO

Global power projection

With the capacity to carry 160,000 lbs of aviation fuel, the KC-767 is capable of massively extending the effective range of aircraft. Currently in service with the air forces of Japan, Italy, and Colombia, additional aircraft have been ordered by Brazil and a special variant was chosen as the chief tanker aircraft for the USAF. This limited edition **kit combo features** two aircraft with new multi-national refueling pod parts and decals for three air forces.

10808 (Limited Edition) HSGS1088 (2 Kits) Total Parts: 64 + 53 Skill Level: 3





1/72 TORNADO GR4 "NO. 12 SQUADRON FAREWELL SPECIAL"

Variable sweep versatility

Introduced in the early seventies, the Tornado GR4 was designed to deliver the best balance of carrying capacity, range, and performance using variable-geometry wings. The aircraft could fly long distances to targets using wide-swept wings then roar in with wings in the delta configuration. After the Gulf War, the British fleet of Tornado aircraft was upgraded to the GR4 standard to improve the delivery of precision-guided munitions. This new variant of the aircraft was used in the War in Iraq. This limited edition **kit features** a special "Farewell!" decal and parts for Brimstone and Storm Shadow missiles.

02116 (Limited Edition) HSGS2116 Total Parts: 137 Skill Level: 3



1/72 SCALE MITSUBISHI® F-2A "PROTOTYPE NO.1 SPECIAL MARKING"

The JASDF's versatile "Viper Zero"

The Mitsubishi F-2A represents the best technology Japan and the United States have to offer. Its larger, highly maneuverable wing design is taken from the proposed F-16 Agile Falcon tactical fighter. An onboard electronics package with advanced Active Electronically Scanned Array (AESA) radar makes it virtually impossible for enemies to detect F-2As while they're in the air. This limited edition **kit features** one decal marking option: 1. JASDF F-2A Prototype No.1 special marking, Code: 63-8501, March 2014.

02117 (Limited Edition) HSGS2117 Total Parts: 128 Skill Level: 3



1/72 SCALE MIKOYAN MIG-29 FULCRUM "UKRAINIAN AIR FORCE"

Protecting Ukrainian airspace for three decades

The MiG-29's agile performance and high-alpha capabilities have made it a favorite fighter all over the world. After NATO gave it the "Fulcrum" nickname, the MiG-29's special moniker became a source of Soviet pride in the waning days of the Cold War. As more military units replace their MiG-29 fleets with Sukhoi Su-27s, twenty-four MiG-29s remain in active service with five Ukrainian Air Force regiments. This limited edition **kit features** two decal marking options: 1. Ukrainian AF, Code: 01, 2012 and 2. Ukrainian AF, Code: 21, 2008.

02118 (Limited Edition) HSGS2118 Total Parts: 70 Skill Level: 3



1/24 SCALE FORD® FOCUS RS WRC 04 "2004 RALLY DEUTSCHLAND"

A driver you can rally behind

Over the course of his decade-long career, Belgian World Rally Championship driver Francois Duval took home 83 rallies, 14 podiums and one rally win. For the 2004 Rally Deutschland competition, Duval drove his Ford Focus RS to a second-place finish, successfully navigating the hairpin turns and wide-ranging track conditions with equal aplomb. This limited edition **kit features** new front and rear bumper parts, plus one decal marking option: 1. WRC 2004 Rally Deutschland, 2nd place, Car #8, Driver: Francois Duval.

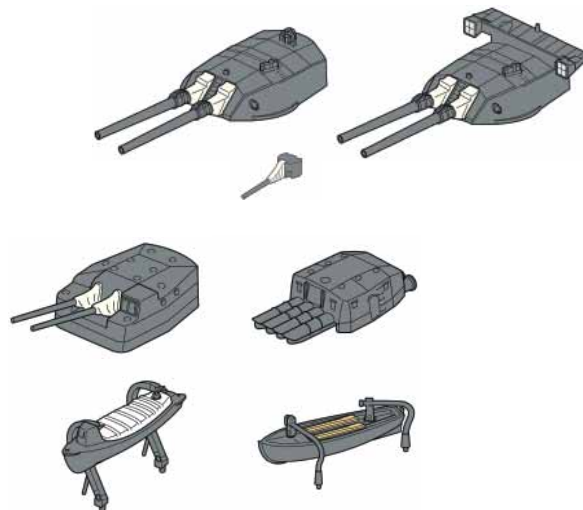
20263 (Limited Edition) HSGS2263 Total Parts: 103 Skill Level: 3

1/350 IJN BATTLESHIP EQUIPMENT SET

Heavy metal

Where would a warship be without its armament? When you're up that creek without that paddle, you're going to need the motorboats and cutters from the destroyer set to pull you back. Or, just install the guns and torpedoes of the destroyer and man the 41cm guns of the Nagato-class set. The Nagato's shells weighed 2,250lb—roughly as much as a heavy-duty pickup truck. Limited edition **battleship kit features** four, twin, gun turrets plus 20, 14cm single turrets; **destroyer kit features** four 12.7cm main gun turrets, four torpedo launchers, four cutters, and four motorboats.

40087 (Limited Edition) HSGS4087 Total Parts: 96 Skill Level: 3
 40088 (Limited Edition) HSGS4088 Total Parts: 56 Skill Level: 3



1/48 SCALE NAKAJIMA KI-44-II HEI SHOKI (TOJO) "246TH FR"

An IJAAF favorite brought to vivid life

The Nakajima Ki-44-II was powered by a 1,440 hp (1,074 kW) Ha-109 engine, which could deliver top speeds of 378 mph (604 km/h). One of the most celebrated Sentais that flew the Ki-44-II was the 246th Air Regiment, who took full advantage of its spectacular speeds and awesome firepower. This limited edition **kit features** new canopy parts, plus two decal marking options: 1. IJAAF 246th FR, 3rd Sq., Code: 321, Taisho AF, 1944 and 2. IJAAF 246th FR, 3rd Sq., Code: 338, Philippines, late 1944.

07382 (Limited Edition) HSGS7382 Total Parts: 83 Skill Level: 3



1/48 SCALE MITSUBISHI® F1M2 TYPE 0 (PETE) MODEL 11 "HEAVY CRUISER"

Made for float-based recon

Throughout WWII, the IJN used seaplane tenders – early aircraft carriers – to discreetly dispatch airplanes for long-range recon missions. The float-equipped, highly-favored F1M2 was frequently sent out from IJN tenders, because of its incredible versatility. Its many uses included maritime patrol, convoy escort, anti-submarine aircraft and bomber. This limited edition **kit features** two decal marking options: 1. IJN Heavy Cruiser Nachi, Code: (C21-1-3) (C21-1-2) Shumshu Island, Sept.-Oct. 1943 and 2. IJN Heavy Cruiser Ashigara, Code: (F2-2) (F2-3) May 1943.

07383 (Limited Edition) HSGS7383 Total Parts: 124 Skill Level: 3



1/48 F/A-18A HORNET "NASA"

Pushing boundaries

Expanding the capabilities of aeronautics entails significant risks, but also the promise of incredible rewards. One of NASA's favorite test vehicles for pushing the boundaries of flight is the F/A-18A Hornet. This incredible aircraft has been used for high alpha tests as well as ventures into Active Aeroelastic wings. In both cases, the Hornet has proven that it can complete unprecedented feats of performance including rolls at 70 degree angles of attack and more. Limited edition **kit features** decals for two NASA test aircraft.

07384 (Limited Edition) HSGS7384 Total Parts: 226 Skill Level: 3





1/32 MESSERSCHMITT ME 262 NACHTJÄGER PROTOTYPE

Hunters in darkness

Fitted with one of the most powerful aircraft weapons of World War II and equipped with twin jet engines, the Me 262 was a terror of the sky. Had the Nachjäger variants been fully finished, however, they would have turned that terror into a true nightmare. Flying at night would have greatly reduced the Allies ability to pick off Me 262s on takeoff and landing. This limited edition **kit features** new FuG218 and FuG226 metal antenna parts plus decals for two night fighter prototypes.

08237 (Limited Edition) HSGS8237 Total Parts: 141 Skill Level: 3



1/48 SCALE F-86F SABRE "THUNDER TIGERS"

Slice the sky with the "Daggers" of the ROCAF Thunder Tigers

The "Daggers" of the Republic of China Air Force "Thunder Tigers" demonstration team were surplus F-86F Sabres, repurposed from American stockpiles to defend Taiwanese airspace. The Sabre design was already over a decade old when the Thunder Tigers received their first aircraft, but the exceptionally advanced aircraft continued to be a success in air shows and air combat. Additional equipment, like the AIM-9 Sidewinder, kept the Sabre active in the world's militaries until 1994. This limited edition **kit features** decals for the Taiwan Air Force Thunder Tigers Air Demonstration Team.

09349 Special Re-issue HSGS9349 (Limited Edition) Total Parts: 86 Skill Level: 3



1/48 SCALE F-104G STARFIGHTER TAIWAN AIR FORCE

MiG-mashers of the ROCAF

Capable of zipping along at double the speed of sound, the F-104G was an exceptional aircraft for its time and is still rightly renowned. The aircraft featured a pared-down design with extremely thin wings, a tapering fuselage, and a massive engine. In Republic of China Air Force service, four Starfighters were called upon to stop an incursion of 8 MiG-19s into Quemoy airspace. The Starfighters downed two MiGs with no losses, proving the combat effectiveness of the type. This limited edition **kit features** ROCAF decals and English/Taiwanese directions.

09365 Special Re-issue HSGS9365 (Limited Edition) Total Parts: 149 Skill Level: 3

Plastic Models



AMT® 1/25 Ford Model T Roadster Racing Body

The old ways are best

Turn Gramp's gas guzzler into a freakishly fast hot rod roadster. The Ford Model T has long been one of the favorite and most famous of all conversions. Converted full-scale Model Ts turn heads wherever they go, and your model Model T can turn heads with a little work and judicious application of this racing body. **Kit features** T body shell, turtle deck, cockpit tarp, instrument panel, steering box, bucket seat, T radiator shell, parachute pack, and more. Does not include frame, suspension, or engine.

AMTPP009 AMTS0009 Skill Level: 2

AMT® 1/520 Hindenburg Zeppelin

Oh the humanity!

The Hindenburg flew over 190,000 miles in its first year of operation, but it is only the last few minutes of its existence that anyone seems to remember. The great gray lady burst into flames on May 6th, 1937 shortly after docking in Lakehurst, New Jersey. In less than a minute, rampaging fires consumed the entire 803 ft (245 m) zeppelin. The disaster ended the lives of thirty-six people and effectively ended decades of research into lighter-than-air passenger aircraft. **Kit features** a simple-to-construct Hindenburg with an in-scale DC-3 airliner for comparison.

AMT844 AMTS0844 Total Parts: 32 Skill Level: 2 Length: 18.5 in (469 mm)



AMT 1/25 1967 Chevy® Chevelle™ Pro Street SS 396

Massively muscled machine

Destroy the competition, melt asphalt, leave the arrogant, insufficient opposition breathing dust and exhaust fumes. Pound high-octane to all eight cylinders, shift the 4-speed manual into gear, and watch the lines on the road disappear in the rearview. The road is your home; the drag strip is your battlefield. If you drive like you mean it, you're driving a Chevelle. **Kit features** detailed motor, suspension, and interior; optional motor intakes and hood scoop; pro-street and pad-printed drag racing rear tires; full decals.

AMT876 AMTS0876 Skill Level: 2

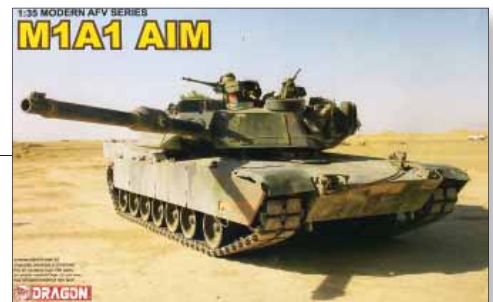


Dragon Models® 1/35 M1A1 AIM

Laying the smack down

The Abrams main battle tank is one of the most incredible machines ever deployed by any army. Upgrade packages like AIM (Abrams Integrated Management) keep it on the cutting edge of military technology. This program upgraded older model Abrams--reconditioning their engines, adding Forward-Looking Infra-Red gear, long-range sensors, a tank-infantry phone, and additional communications, location, and IFF (Identification Friend or Foe) gear. Many of the AIM tanks were sent to Australia. **Kit features** extensive detailing; many gear options, and many photo-etched parts plus full decals.

3535 DMLS3535



Lindberg 1/64 B-58 Hustler Bomber

Mach 2 marvel

Convair B-58 "Hustler" bombers were designed to be uncatchable. Their four jet engines drove the craft to twice the speed of sound (1,319 mph) and the craft could fly up to 63,400 ft (19,300 m). Despite this incredible speed, however, the newest generation of Soviet SAM batteries made high-altitude strikes—no matter how fast—totally impractical. In order to deliver its variable-yield atomic weapons, Hustler crews were trained to fly the Hustlers under the radar and pop up only on the final approach. **Kit features** removable engines, moveable controls, crewman, retractable landing gear, and display stand.

HL405/12 LNDS0405 Total Parts: 112 Skill Level: 2



Lindberg Models® 1/48 RAF Hawker Fury

Inter-war innovator

Designed in the early thirties, the Hawker Fury was everything a good WWI-era fighter should be—fast, maneuverable, and armed with a pair of .30 caliber machine guns. Unfortunately for the Hawker Fury and its pilots, the advance of aviation technology would rapidly leave it and other biplanes behind. Despite its qualities, the Fury was simply not a match for the new generation of German fighters. Many were lost in one-sided conflicts. **Kit features** a pilot figure, extensive detailing, and full decals.

HL406 LNDS0406 Skill Level: 2





Lindberg 1/35 Soviet T-55

Soviet striker

In thirty-seven years of production, more than 80,000 T-54 and T-55 tanks were built and fielded by the armies of Soviet Russia and her allies. T-55 tanks were improved from the T-54 with the addition of a NBC (Nuclear, Biological, Chemical) defense system and several other substantial improvements. For a tank designed in the late forties and fifties, the T-55 has proved to be a versatile and effective weapons system. Armed conflicts all over the world have hinged on the qualities and failings of the T-55.

HL415 LNDS0415 Skill Level: 2



Minicraft® 1/144 C-47A "Gooney Bird" on Floats

The infinitely-variable Gooney

DC-3, C-47, C-53, AC-47—the names and designations for the "Gooney Bird" were as many and as varied as the roles it was asked to take on during WWII. One rare and sensational variant was the float-equipped C-47. In the Pacific Theatre it was all too easy to lose track of the small island air bases dotting the Pacific and wind up running out of fuel. The floats of this particular variant let the C-47 land anywhere for repairs, refueling, or to load or unload war supplies.

14701 MMIS4701



Moebius® 1/18 Scale 1966 Batman®

Holy plastic model kit, Batman!

For a generation of fans, Adam West is famous for his voiceover work on animated series like "Family Guy." For everyone else, West is Batman. With this detailed model kit and the release of "The Complete Series" box set later this year, fans have plenty of ways to get their Adam West fix. **Kit features** an accurate likeness of star Adam West, sculpting by Jeff Yagher, a Batcave® rock display base and nameplate that are compatible with upcoming Moebius Batman character kits and colorful packaging illustrated by Christopher Franchi.

950 MOES0950 Skill Level: 3 Length: 10 in (254 mm)



MPC® Space: 1999® Moonbase Alpha

Commander Koenig's lunar locale

Fans of old-school sci-fi are sure to recognize the Moonbase Alpha from the 1975-77 cult favorite "Space: 1999." The Moonbase Alpha was designed for use as a space research center and a nuclear waste disposal site. This helped "Space: 1999" stand apart from other 1970s sci-fi shows. **Kit features** newly tooled, accurately detailed parts, white plastic molding, an 18" x 12" (457 mm x 305 mm) four-piece vacuform base in 1/1800 scale, five landing pads, scale Eagle Transporters, a separate 1/115 scale control room model and an expanded decal sheet.

MPC803 MPCS0803 Skill Level: 3



Polar Lights® 1/25 Scale Back to the Future®

Part II Time Machine

Great Scott!

The first "Back to the Future" ended with "Doc" Brown, Marty McFly, Jennifer and Einstein traveling to 2015 in their flying time machine. When "Part II" hit screens in 1989, the filmmakers had to deliver on that promise. Judging from the series' lasting appeal, fans were thrilled for more exciting adventures with these time-traveling characters. **Kit features** easy snap-together assembly, a painted brushed silver metal/gray body, optional parts to hold the wheels in a pivoted flying position, a choice of lightning hook and Mr. Fusion options and a display stand.

POL925 PLS0925 Skill Level: 1

Plastic Models

www.gpdealer.com

Tamiya® 1/35 German 7.62cm Pak36® North Africa

Russian metal for German wars

The Nazi war machine is frequently viewed as an unstoppable juggernaut of technical sophistication and indomitable soldiers. This, frequently, simply wasn't the case. As advanced as some of the German weapons were, many more were antiquated. The anti-tank weaponry of the Wehrmacht, for example, simply couldn't combat Soviet T-34s. Germany captured a mass of Russian guns, modified them into the Pak 36(r) as quickly as possible, and sent them into combat against heavy tanks on all fronts. **Kit features** the Pak, 8 figures, sandbags, and a diorama base with 'sand' sheet.

32408

TAMS2408



Tamiya® 1/35 US Army M4A3E8 Sherman with Four Figures

Extra armor, smoother ride

The "Easy Eight" Sherman was an up-armored design of the ubiquitous M4. It was designed with a Horizontal Volute Spring Suspension, thicker glacis plate armor, and a modified turret shape to facilitate assaults on heavily-fortified positions. Although still not a match for the top tanks of the Third Reich, simple numbers won the day—with as many E8 Shermans produced as the total of all Panther variants. The variant served into the Korean War. **Kit features** photo-etched parts, four figures, and full decals for four units.

25175

TAMS5175 Length: 8.3 in (210 mm)



Just Released

Uncle Milton® Frozen® Light Up Toys

Warm any room with Frozen light!

- Watch Elsa make snowflakes dance with the Snowflake Light Dance
- Hang out with all your Frozen friends with Frozen Light Vines
- Both items feature:
 - Adjustable light settings
 - Characters from Disney's Frozen
 - Easy installation



2375
UMLX2375
Frozen Snowflake
Light Dance

2384
UMLX2384
Frozen Light Vines

Elenco® Periscope

Laugh and learn

- Extendable 21-29 inch handle
- Explore around corners and over walls
- Adjustable handle
- Perfect for kids 8+



EDU-37363
ELEX7363
Periscope



EDU-37674
ELEX7674
Handheld Microscope



Elenco Handheld Microscope

Fine viewing wherever you go!

- View tiny objects up close wherever you are
- Selectable 20x and 40x magnification
- Includes prepared slide, stand, wrist strap and more!



EDU-37677
ELEX7677
Water Filtration Kit

Elenco Water Filtration Kit

Who says science can't be fun?

- Multi-stage filter reduces particulate and chemical concentrations
- Clear plastic lets you see the filter working
- Teach kids about water conservation, hydrodynamics, and more
- A useful multi-purpose tool that refreshes

1587000
CFKY1587
Opti-Art Gemstone Jewelry



Creativity For Kids Opti-Art Gemstone Jewelry

Like, Oh-My Gawd, You Have to try thiis!

- Make fashion-fab gemstone jewelry
- Accessorize with glam gemstones
- Make totally chic accessories for you and 15 BFFs
- Includes bonus mini purse for your fav frills

1680000
CFKY1680
Sew Cute Sock Kitty



Creativity for Kids Sew Cute Sock Kitty

Cuddly, cute, and all yours

- Sew your own cute cat with this fun kit!
- Stuff with the included micro fiber to make it extra cuddly!
- Decorate your cat any way you like
- Perfect for all ages—7 to 97

1733000
CFKY1733
Pretty Pedicure Salon



Creativity for Kids Pretty Pedicure Salon

Have a foot fiesta

- Your feet carry you through life, show them some love!
- Includes:
 - 3 water-based polishes
 - Over a hundred nail art stickers
 - Soap confetti
 - 45 rhinestones
 - And more!

OWI PLANET-FRIENDLY PRODUCTS

Six cool sets powered by our planet

- Turn used bottles, cans, and CDs into fun with the Super Solar Recycler Kit
- The T4 transforming solar robot is an insect, drill, T-Rex and Robot all in one!
- Rookie Solar Racers are easy to put together, fast, and fun
- Get the meanest thing on two wheels the Salt Water Fuel Cell Motorcycle
- Build six educational, fun, solar-powered kits from one Educational Solar Kit
- No need to be scared of this bug, Frightened Grasshopper dances in the sun for you



OWIKIT

- OWIX0616 OWI-MSK616 Super Solar Recycler
- OWIX0617 OWI-MSK617 T4 Transforming Solar Robot
- OWIX0661 OWI-MSK661 Rookie Solar Racer
- OWIX0753 OWI-753 Salt Water Fuel Cell Motorcycle
- OWIX1010 MSK610 6 In 1 Educational Solar Kit
- OWIX1070 MSK670 Frightened Grasshopper Mini Solar Kit

Long story short...

Learning, fun, and conservation combine in these spectacularly fun kits from OWI. Get kids outside, teach them about green energy, and watch them have lots of fun!

TEDCO TOYS® SETS

For inquisitive kids of all ages

- Explore 12 awesome experiments with the Crazy Chem set for ages 8+
- Make fish eyes, worms, and more icky-awesome items with the Weird Slime Workshop
- Have fizzy fun in the bathtub with the Bath Bomb Studio—ages 10+
- Split the sun's spectrum with the Right Angle Prism, made from tough acrylic.
- Make ten unique greeting cards with the SunArt Greeting Card Kit
- Make 15 unique art prints with sunlight-sensitive paper in the SunArt Deluxe Kit



TEDCO Toys

Where Imagination Has No Boundaries

- TEDX0013 00013 Right Angle Prism
- TEDX0901 WS901 Wild Science Weird Slime Workshop
- TEDX0902 WS902 Wild Science Bath Bomb Studio
- TEDX2043 32043 Crazy Chem
- TEDX8053 88053 Sun Art Card Kit
- TEDX8054 88054 Sun Art Deluxe

Long story short...

Explore, innovate, and create with these amazing products from Tedco Toys!

POOF-SLINKY KITS FOR INTREPID KIDS

All new ways to get sun and have fun!

- Accelerate to exhilaration with fun, fast Scientific Explorer Land and Sky Rocket kits!
- Explore the wonders of your Backyard or hunt for Pirate Treasure with My First kits
- Don't fear the dark, light up intellects with six fun Glow in the Dark Fun Lab activities
- Inquisitive kids can explore the world of color with the Color Mysteries Kit
- Train, accessorize, care for and have Fun With Your Dog ((Dog Not Included))
- Turn a T-shirt into an ice cream machine with the Ice Cream Science kit.



SLYX0231



SLYX0255



SLYX0201	OSA2001 Turbo Sky Rocket
SLYX0231	OSA2031 Turbo Land Rocket
SLYX0255	OSA255 My First Backyard Explorer Kit
SLYX0269	OSA269 My First Pirate Treasure Kit
SLYX0270	OSA270 Glow In The Dark Fun Lab
SLYX0275	OSA275 Color Mysteries Kit
SLYX0278	OSA278 Fun With Your Dog
SLYX0282	OSA282 Ice Cream Science

Long story short...

Poof-Slinko has eight ways to get your kids actively thinking while they play. It's all fun, all learning, and it can be all yours!

MR.BEER REFILLS AND KITS

Foundation of civilization

- Cut your bar tab down to zero—brew your own beer at home!
- The North American Collection Beer Kit gives you everything you need to brew:
 - Brewing Barrel
 - Beer mix
 - Bottles
 - Instructions
- Finish off one set and Mr.Beer has lots of Refills:
 - North American Variety
 - European Variety
 - Archer's Orchard



MBEY2950



MBEY2500	25000 North American Variety Pack Refill
MBEY2600	26000 European Variety Pack Refill
MBEY2950	20950 North American Collection Beer Kit
MBEY6551	60551 Mr. Beer Archer's Orchard Hard Pear Cider Refill

Long story short...

Find out how rewarding easy home brewing can be with Mr.Beer kits and refills!

BRICTEK® BUILDING BLOCKS

New generation, new blocks, same great fun!

- Brictek has dozens of interlocking blocks sets on many subjects
- Baseplates, roofs, doors, and windows hold things together and add realism
- Build your way with the 800 piece super pack
- Build building machines with the Cement Mixer
- Blast into intergalactic battle with the Space Fighter



BICY4003



BICY9013



BICY9001



BICY7006



BICY9013	19013 Baseplates 17 Assorted Black
BICY9001	19001 Super Pack 800pcs
BICY4003	14003 Cement Mixer 189pcs
BICY7006	17006 Space Fighter w/Rotating Stand 46pcs

See GPDealer for a complete list.

Long story short...

Building blocks have been a part of growing up for a very long time, but Brictek makes it easy and fun with cool kits, a wide variety of subjects, and total interoperability.

JTT SCENERY PRODUCTS

Fine foliage and more for railroaders or dioramas

- Available in O and HO scales
- Pristine pre-assembled trees
- Verdant vegetables
- Flourishing flowers
- Sturdy structural
- And much more!



JTTU2122



JTTU5523



JTTU5528



JTTU5531

JTTU5531	95531 1-3/8" Length Pumpkin Patches (6) HO
JTTU5523	95523 1" Sunflowers (16) HO
JTTU5528	95528 1/2" Cabbage/Lettuce Purple/Green (20) O
JTTU2122	92122 2-2 1/4" Fruit Grove Apple Trees (6) HO

See GPDealer for a complete list

Long story short...

JTT Scenery Products offers a wide variety of landscape features for model railroaders, diorama builders, artists—anyone that needs detailed scenery quick!

4D CITYSCAPE TIME PUZZLES

From Frisco to the fantastic, 4D helps you build it

- Experience the growth of cities real and fictional through time puzzles
- Game of Thrones Westeros—follow the armies, build the castles, rule the Iron Throne
- Piece together the history of real-life cities:
 Shanghai, China 1100 pieces
 San Francisco, USA 1100 pieces
 Dubai, UAE 1200 pieces
 Barcelona, Spain 1200 pieces



FCSY4050

FCSY5100



- FCSY4040 40040 Shanghai China 1100pcs
- FCSY4044 40044 San Francisco USA 1100pcs
- FCSY4046 40046 Dubai UAE 1200pcs
- FCSY4050 40050 Barcelona Spain 1200pcs
- FCSY5100 51000 Game Of Thrones Westeros

Long story short...

History and geography buffs, puzzle fanatics, Game of Thrones fans—just about anyone can enjoy a 4D Cityscape puzzle.

RAVENSBURGER® PUZZLES

Challenge your brain, excite your senses

- Both complex and simple Ravensburger puzzles depict scenes both frivolous and serene
- Delve into a world of culture with the 1,500 piece Opera House
- Tarry by the seaside with the 1,000 piece Bruce Peninsula Lighthouse
- Fill your senses with color with the 500 piece Beautiful Flowers
- Revel in Old World architecture with the 300 piece Over the River



RVBY1343



RVBY1302



RVBY1152



RVBY1564



- RVBY1302 16302 Opera House 1500pcs
- RVBY1152 19152 Lighthouse Bruce Peninsula Canada 1000pcs
- RVBY1343 14343 Beautiful Flowers 500pcs
- RVBY1564 13564 Over the River 300pcs

Long story short...

Ravensburger delivers a wide variety of extraordinarily detailed puzzles on subjects ranging from kittens to cottages. With fall just around the corner, now is a great time to stock up on puzzles!

MASTERPIECES JIGSAW PUZZLES

Made for rainy days

- 1000 piece count puzzles
- Beautiful scenes
- Full-color box art



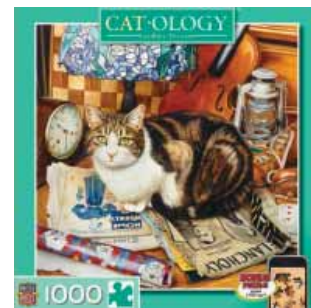
MSTY1407



MSTY1388



MSTY1418



MSTY1399

- MSTY1418 71418 Wonka Candies 1000pcs
- MSTY1388 71388 Three Generations 1000pcs
- MSTY1407 71407 Soda Jerk 1000pcs
- MSTY1399 71399 Tiffany 1000pcs

See GPDealer.com for a complete list

Long story short...

MasterPieces Puzzles are elegant representations of the real and the surreal. Piece together a portrait of a perfectly peaceful home, a marine home from the war, and so much more.

SUNSOUT QUALITY JIGSAW PUZZLES

Wide range of subjects

- Made in the USA!
- Eco-friendly soy-based inks on recycled board
- Tons of options
- Perfect fall activity!



SOIY6843



SOIY1326



SOIY1196



SOIY1929

- SOIY1196 71196 Fishing Lesson 500pcs
- SOIY1326 71326 Arctic Glow 1000pcs
- SOIY1929 71929 Picnic Puppies 500pcs
- SOIY6843 16843 American Pride 500pcs

See GPDealer.com for a complete list

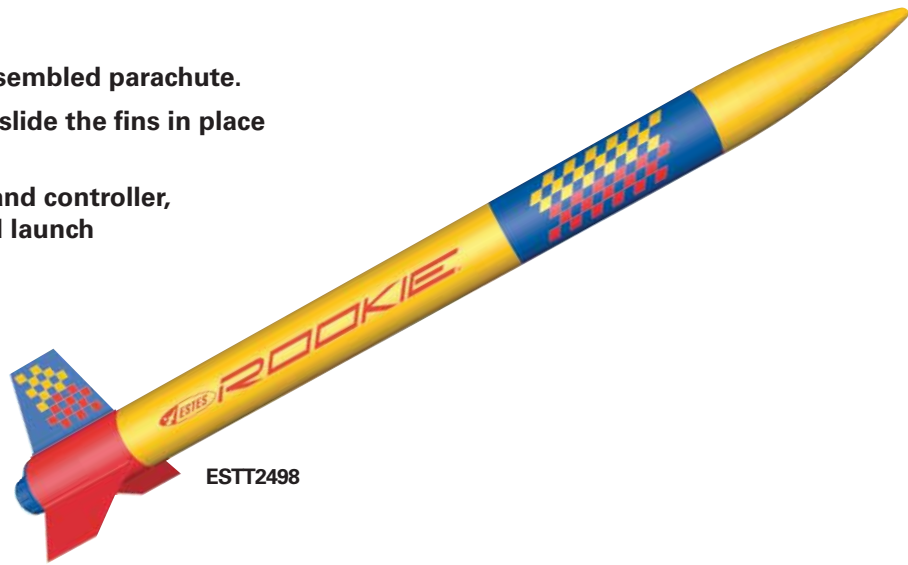
Long story short...

Verdant vistas to vivid wildlife, SunsOut has a puzzle to please every individual taste. Plus, all their puzzles are eco-friendly and 100% made right here in the USA.

ESTES® ROOKIE ARF

First time? Don't worry it's gonna be a blast

- Uniquely detailed design.
- Includes 15 in (38.1 cm) pre-assembled parachute.
- ARF: Almost ready to fly—just slide the fins in place and attach the parachute.
- Requires engines, launch pad and controller, recovery wadding, starters and launch controller batteries.



ESTT2498

Almost Ready to Fly **ARF**

Max. Altitude: 550 ft (168 m)
Height: 23.3 in (59.2 cm)
Diameter: 1.64 in (42 mm)
Weight: 3.6 oz (102 g)
Recommended engines: B6-2 (first flight), C6-3 or C6-5



Long story short...

The Rookie is ready to blast off in minutes with only minor assembly!

ESTES® MAMMOTH PRO SERIES II E2X

Big, bold, boom

- Standing 59.1 inches tall, it's Mammoth in size.
- Metallic body tube and 24 inch red nylon parachute.
- E2X: Easy to Assemble—ready to go in one hour with some assembly
- Requires engines, launch pad and controller, recovery wadding, starters and launch controller batteries.



ESTT9708

Easy to Assemble **E2X**

Max. Altitude: 1600 ft (488 m)
Height: 59.1 in (150.1 cm)
Diameter: 2 in (51 mm)
Weight: 13.3 oz (377 g)
Recommended engines: F15-6 (first flight), E16-4, E16-6, E16-8, or F15-8



Long story short...

In as little as one hour you can have the Mammoth on the launch pad, ready to go. It requires some glue assembly but all parts are pre-colored and easy to put together.

TURN HERE FOR RADIO CONTROL PRODUCTS