

GREAT NEWS

GREAT PLANES MODEL DISTRIBUTORS

RADIO CONTROL • JULY 2014

'ARMA'

DESIGNED FAST DESIGNED TOUGH

MEGA & BLS

Pages 2-7



GRANITE

PLUS:

New Proto-X Nano Body Colors!

Pages 10-11

New Axial Vehicles

Pages 12-15

Award Winning Products

Pages 24-25



Copyright 2014 Hobbico® 2003329 All rights reserved.

GREAT NEWS

GREAT PLANES MODEL DISTRIBUTORS

GENERAL HOBBY • JULY 2014



Page 2

PLUS:

New Plastic Models

Pages 2-8

Estes® "Show Stopper"

Page 9

Bachmann N-Scale Train Set

Page 9



AWESOME SPEED — SUPERIOR STRENGTH — INCREDIBLE VALUE


Fast

Faster

additional gears and Lipo battery

Way Faster!

Up to 40%

NEW Chassis Design

 Starting at
\$159⁹⁹
BLS

Why choose ARRMA?

- Eight vehicles — there's one for every category and skill level to enjoy
- Priced affordably, starting at \$159.99
- Awesome Speeds — factory equipped to go 40% faster
- Ultra-tough composite and aluminum parts
- Fully waterproof electronics
- 100% upgradable
- Industry-leading 2-year limited warranty

ARRMA
 DESIGNED FAST DESIGNED TOUGH

New MEGA and BLS features:

- Chassis re-engineered for greater rigidity, more strength and easier access
- Secure, impact-resistant battery box with easy-open door and foam padding
- Molded-in servo wire channels for neater installations and greater protection
- Compatibility with all optional alloy parts designed for BLX models
- LiPo-ready chassis that can also accept 7-cell NiMH/NiCd packs without modification
- Composite transmission gears for lower rotational mass and faster acceleration
- Easily accessible steering servo

All MEGA and BLS ready-to-run vehicles include:

- Fully assembled chassis
- Trimmed and painted body
- 2.4GHz 3 channel radio
- Waterproof ESC and steering servo
- NiMH battery pack and wall charger
- Mounted dBoots™ tires with foam inserts

From the Experts:

ARRMA's 2014 lineup of buggies and trucks raises the bar.

- Quality
- Performance
- Durability

Soon to be your entry-level vehicles of choice!

Long story short...

ARRMA is passionate about engineering models that are packed with performance and value...and it shows in the 2014 MEGA and BLS lineups!

GO FASTER... HAVE MORE FUN...

'ARRMA' MEGA



RAIDER

RAIDER MEGA Off-Road Buggy
Length: 15.7 in (400 mm)
Width: 9.9 in (253 mm)
Height: 6.0 in (140 mm)
Weight: 50 oz (1.36 kg)
 ARAD35**

Enjoy the efficient torque of the MEGA power system with a lineup of rugged rides! No matter what the conditions, MEGA ready-to-run vehicles deliver affordable off-road excitement, with speeds that are ideal for young modelers or families looking for first-time R/C adventures.

'ARRMA'

DESIGNED FAST DESIGNED TOUGH

All MEGA RTRs feature:

- 540-size MEGA 15T motor
- Molded camber and steering links
- Low-maintenance oil-filled diff with durable internal gears for trouble-free operation
- Mounted dBoots™ tires and black wheels for rugged looks
- 30+ MPH achievable with recommended optional battery and gears

VORIEKS

VORIEKS MEGA Stadium Truck
Length: 16.7 in (425 mm)
Width: 12.7 in (324 mm)
Height: 6.3 in (160 mm)
Weight: 57.5 oz (1.63 kg)
 ARAD36**



GRANITE

GRANITE MEGA Monster Truck
Length: 16.5 in (420 mm)
Width: 13.8 in (340 mm)
Height: 7.9 in (200 mm)
Weight: 70.1 oz (1.99 kg)
 ARAD37**



FURY

FURY MEGA Short Course Truck
Length: 21.3 in (540 mm)
Width: 11.6 in (295 mm)
Height: 7.9 in (200 mm)
Weight: 68.7 oz (1.95 kg)
 ARAD38**



BRUSHLESS SPEED FOR UNSTOPPABLE EXCITEMENT

www.gpdealer.com

www.gpdealer.com



FURY

FURY BLS Short Course Truck
Length: 21.3 in (540 mm)
Width: 11.6 in (295 mm)
Height: 7.9 in (200 mm)
Weight: 68.7 oz (1.95 kg)
ARAD43**

Once you've experienced amazing BLS brushless power, you'll wonder how ARRMA is able to pack so much muscle into each model! Aggressive styling and super-durable parts give BLS bashers the looks and toughness they demand...the thrilling top-end speeds are a high-performance bonus. All of this amazing BLS power and strength is available at an unbelievable price starting at \$249.99!

All BLS RTRs feature:

- 540-size 4000kv motor
- Brushless ESC with push-button programming
- Strip-resistant, hex head hardware throughout
- Metal motor mount to help dissipate heat and increase performance
- Turnbuckle camber and steering links
- Mounted dBoots™ tires and chrome wheels
- 35+ MPH achievable with recommended optional battery and gears

'ARRMA'
 DESIGNED FAST DESIGNED TOUGH

'ARRMA' BLS

VORIEKS

VORIEKS BLS Stadium Truck
Length: 16.7 in (425 mm)
Width: 12.7 in (324 mm)
Height: 6.3 in (160 mm)
Weight: 57.5 oz (1.63 kg)
ARAD41**



GRANITE

GRANITE BLS Monster Truck
Length: 16.5 in (420 mm)
Width: 13.8 in (340 mm)
Height: 7.9 in (200 mm)
Weight: 70.1 oz (1.99 kg)
ARAD42**



RAIDER

RAIDER BLS Off-Road Buggy
Length: 15.7 in (400 mm)
Width: 9.9 in (253 mm)
Height: 6.0 in (140 mm)
Weight: 50 oz (1.36 kg)
ARAD40**



BEHOLD THE ULTIMATE BRUSHLESS BUGGY

TYPHON 6s BLX

Leave it to ARRMA to engineer a buggy that meets every R/C driver's demands for speed, power and durability! The 1/8 scale TYPHON 6s Speed Buggy incorporates all of the race-winning brushless technology ARRMA has to offer, resulting in a 4WD beast that conquers the most unforgiving terrain and leaves the competition in its dust. If being #1 is important to you, then the TYPHON is designed with you in mind.



Super-tough and ultra-light weight, the red and black anodized aluminum parts add strength, speed and style!



Packed with performance features!

- ARRMA BLX 2050KV Brushless Motor is included for awesome speed
- Waterproof Receiver Box with ARRMA gasket technology
- Waterproof ESC switch system with single button programming
- Heavy-duty Gear Diffs with lightweight composite casings and tough steel outdrives
- Fully adjustable Battery Tray with hook-and-loop straps that can hold a 6S LiPo battery
- High-impact composite Suspension Arms, Steering Knuckles and Rear Hub Carriers
- Durable composite Wing Mount with aerodynamic high-speed black nylon Wing
- Steel Turnbuckle Links with race-spec adjustability
- Composite Chassis Side-Pods with built-in splash guards
- Race-spec Front Pivot Balls on upper and lower suspension arms
- Race-spec Center Differential with ultra-strong ARRMA spur gear
- Multi-surface dBoots™ tires with aggressive tread pattern and foam inserts
- Tough, aerodynamic polycarbonate body shell with printed trim scheme
- ...and much more! To see a full list of included performance extras visit arrma-rc.com.

The TYPHON comes fully equipped and ready for action!

- BLX 2050kV Brushless Motor with built-in heat sink fins
- ATX-100 2.4GHz Radio with ARX-100 receiver
- BLX180 waterproof 6S capable ESC with built-in fans and capacitors
- ADS-15 waterproof 15kg metal gear Steering Servo

ARAD80**TYPHON 6s 1/8 Scale Brushless 4WD Speed Buggy RTR

Length: 20 in (510 mm)
 Width: 12.2 in (310 mm)
 Height: 7.5 in (190 mm)
 Wheelbase: 13 in (330 mm)
 Approx. Weight: 8.6 lb (3.9 kg)

Lipo battery and charger not included.

ARRMA[®]
 DESIGNED FAST DESIGNED TOUGH

From the Experts:

When equipped with a 6S LiPo battery the TYPHON 6s Speed Buggy produces massive 4WD power for bashing and jumping — along with blink-of-an-eye speeds for taking the checkered flag. Serious racers will appreciate the TYPHON's high level of adjustability, and the impressive list of aluminum, steel and composite parts speaks to this off-roader's durability!

Long story short...

With the TYPHON 6s Speed Buggy you won't just beat the competition...you'll dominate the competition!

MULTIPLE COLOR CHOICES WITH AUTO UPRIGHT

www.gpdealer.com

www.gpdealer.com



When the nano-sized Proto-X quadcopter was introduced last fall it took the hobby world by storm, and now it's even better than ever! Auto Upright allows you to simply toss the Proto-X into the air, and it will level itself — even when upside down. Plus, this amazing quadcopter is now available in six exciting colors. Simply pick your favorite color, add 2 "AAA" batteries and you're ready for takeoff!

- Compact, beginner-friendly and ideal for indoor flying fun
- Auto Upright means the Proto-X will self-correct its flight when tossed into the air
- Weighs less than half an ounce
- Bright, built-in LEDs make it easy to see in low light
- 2.4GHz radio links only to your aircraft; multiple Proto-X quadcopters can fly at once
- Gyro provides smooth, stable flight

Includes a 3.7V 100mAh LiPo battery, USB charge cord and spare rotor blades

Buy more than one
and fly them together!

protoX™

ESTE48** Proto-X EP 2.4GHz Quadcopter RTF
 ESTE48GG Proto-X EP 2.4GHz Quadcopter RTF-Green
 ESTE48LL Proto-X EP 2.4GHz Quadcopter RTF-Black
 ESTE48PP Proto-X EP 2.4GHz Quadcopter RTF-Purple
 ESTE48RR Proto-X EP 2.4GHz Quadcopter RTF-Red
 ESTE48WW Proto-X EP 2.4GHz Quadcopter RTF-White
 ESTE48YY Proto-X EP 2.4GHz Quadcopter RTF-Yellow
 Dimensions: 1.8 in x 1.8 in (45 mm x 45 mm)
 Weight: 0.4 oz (11.5 g)
 Requires: 2 "AAA" batteries



From the Experts:

The Proto-X quadcopter is incredibly small, unbelievably cool and affordably priced! With Auto Upright even beginners can confidently fly the Proto-X anywhere indoors. The nano-technology is cutting-edge, and virtually everything you need is included. This is the must-have model for fliers of all ages!

Long story short...

The Proto-X delivers big-time fun in a nano-sized, easy-to-fly package!



READY TO RUN

YETI™ 1/10th SCALE ELECTRIC
4WD #AX90026



BFGoodrich Tires and KRAWLER™ T/A® Trademarks are used under License from Michelin



- Hi-Lo transmission with all metal internal gears
- Independent front suspension and rear AR60 OCP-Axle™
- 3150KV 4-pole brushless motor provides massive amount of power
- 2.2 BFGoodrich Krawler™ tires (R35 compound)
- Officially licensed 2.2 Walker Evans Racing IFD™ Wheels
- Waterproof Vanguard ESC - 3S LiPo

- Waterproof receiver box integrated into bottom of chassis
- WB8 HD Wild Boar rear driveshaft with updated larger diameter design
- Adjustable aluminum shock bodies

AXID9026 - Yeti™
Length: 19.5" (495mm)
Width: 12.3" (312mm)
Height: 7.7" (195mm)
Wheelbase: 14.2" (360mm)
Ground Clearance: 2" (50mm)
Weight: 6.51lbs (2.9kg)

For additional items see a complete list at www.GPDealer.com

From the Experts:

The Yeti™ is a skillfully engineered rock racing vehicle with a solid rear axle and independent front suspension. Its distinct aesthetic and technical elements were inspired by full-size desert trucks. Its strategically engineered design supplies bashing stamina while delivering a high level of technical rock racing abilities without compromise in either category. It's powered by a 3150KV 4-pole brushless motor which provides the perfect amount of torque and speed. The long can design provides a massive amount of power, especially when powered by 3S. Precision machined aluminum shocks are standard equipment and deliver smooth suspension movement for consistent handling.

Long story short...

It's as serious as you want it to be, with true fun factor characteristics that make it a blast to drive. The Yeti™, dirt's new friend.



www.gpdealer.com

www.gpdealer.com

#AX90036
**SCX10™ JEEP WRANGLER
 G6 FALKEN EDITION**
 1/10th SCALE ELECTRIC 4WD
READY TO RUN



Jeep and related logos, vehicle model names and trade dresses are trademarks of Chrysler Group LLC and are used under license by Axial Inc. © Chrysler Group LLC 2014.



- Officially licensed 1/10 scale Jeep® Wrangler body
- Universal 5 bucket light bar set (LED lights not included)
- Officially licensed 1.9 Falken Wildpeak M/T tires in R35 compound
- Officially licensed 1.9 Walker Evans Racing wheels
- Officially licensed Poison Spyder Rock Brawler front bumper
- Dual slipper clutch

- Metal gear Tactic servo - 151 oz-in of torque
- WB8 HD Wildboar™ driveshafts
- Adjustable coil-over shocks - dual rate springs
- 4-link rear suspension - optimized to reduce axle steer & torque twist

AXID9036 - SCX10™ Jeep® Wrangler G6 Falken Edition
Length: 18.1" (460mm)
Width: 8.8" (225mm)
Height: 9" (230mm)
Wheelbase: 12" (305mm)
Ground Clearance: 2.7" (68mm)
Weight: 4.65lbs (2.1kg)

For additional items see a complete list at www.GPDealer.com

From the Experts:

The Axial SCX10™ Jeep® Wrangler G6 Falken Edition elevates all terrain trailblazing, marrying the celebrated Jeep® dovetail body with the undeniable performance of Falken Wildpeak M/T tires. This SCX10™ was inspired by Falken's presence at King of the Hammers and the uncontainable spirit for trailblazing that Axial is known for. The Jeep® Wrangler G6 Falken Edition bares the special edition livery that echoes Falken's established legacy.

Long story short...

With the WB8 HD Wildboar™ drive shafts and Falken Wildpeak M/T tires, the Jeep® Wrangler G6 Falken Edition delivers durability and performance for every adventure. Rugged. Dependable. That's the SCX10™.



TWO RAD RIDES TO RALLY AROUND!

MICRO RS4 SUBARU WRX STI

1/18 Scale Electric 4WD On-Road Cars



HPI Racing unleashes two exciting on-roaders that are more than just race cars: they're scale replicas of Global Rallycross (GRC) vehicles driven by world-renowned drivers! Behind the wheel of the #81 car is pro skateboarder and perennial X Games participant Bucky Lasek, while Sverre Isachsen has driven the #11 racer to 3 wins and 3 podiums!

- Full-time shaft drive 4WD
- Powerful 180-size motor
- HPI electronic speed control with reverse
- Coil-over shock suspension
- High-grip compound tires
- HPI 2.4GHz radio system
- Plazma 6V 1200mAh rechargeable NiMH battery
- Shock-absorbing front bumper
- Complete set of ball bearings
- Includes "AA" transmitter batteries and AC wall charger



HPID2465 1/18 Scale Micro RS4 Subaru WRX STI #81 Bucky Lasek RTR
 HPID2466 1/18 Scale Micro RS4 Subaru WRX STI #11 Sverre Isachsen RTR
 Length: 8.6 in (220 mm)
 Width: 4.1 in (105 mm)
 Wheelbase: 5.9 in (150 mm)



SUBARU trademarks and body designs are properties of FUJI HEAVY INDUSTRIES, LTD. and used under license to HPI Racing.
 All commercial and publicity rights to use or market the name and likeness of Bucky Lasek are licensed exclusively through Wasserman Media Group, LLC.
 All commercial and publicity rights to use or market the name and likeness of Sverre Isachsen are licensed through Lance Smith Inc.

From the Experts:

Whether indoors on carpet or outdoors on asphalt, these Micro RS4 Subaru models deliver all the thrills of rallycross racing! They're packed with performance features such as a high-powered motor, direct drivetrain, full-time 4WD, ball bearings and more. Plus, they sport the licensed livery of the PUMA racing team!

Long story short...

HPI's "go-anywhere" 1/18 scale Micro RS4 rally cars come Ready-To-Run, and ready to impress with their speed and style!

NEWPRODUCT

THE BEST CHARGER FOR THE BEGINNER!



110 AC/DC Peak Charger

- Tiny, lightweight built-in switching AC power supply, so it's very portable and great for small pit areas
- Peak detection with automatic trickle charge takes the guesswork out of topping off packs at maximum power
- Selectable charge currents let you use the Onyx 110 on models from 1/18 to 1/8 scale
- Ideal for electrics — and also charges receiver batteries for nitro models
- An auto-start function with status LED makes setup a snap



Includes a built-in socket for charging 4- or 5-cell receiver batteries, and even 8-cell transmitter packs.

DTXP4191 Onyx 110 AC/DC Peak Charger

AC Input: 110V AC 60Hz

DC Input: 11-15V DC, built-in with alligator clips

Battery Types: 4-8 NiCd or NiMH cells (4.8-9.6V, limited to 7 cells on DC)

Battery Capacity Range: 600-6000mAh

Fast Charge Current: 1, 2 or 4A linear (2A limit on AC)

Fast Charge Termination: peak detection

Dimensions: 3.4 x 4.8 x 1.8 in (87 x 123 x 45 mm)

Weight: 6.95 oz (197 g)



From the Experts:

For anyone purchasing a Ready-To-Run car, truck or boat as their first model, the Onyx 110 offers AC/DC versatility and worry-free peak detection for NiCds and NiMH batteries at an incredibly low price! Plus, its compact size makes it ideal for using and transporting.

Long story short...

Sport modelers will appreciate getting more for less with the Onyx 110 Peak Charger!

SHARP, SPORTY PERFORMANCE

NEW PRODUCT

Kunai

1.4M EP Sport Glider



- Simple fast-building design, superior performance
- Comes with a 1400kV outrunner brushless motor and folding propeller
- Rx-R also includes a 20A brushless ESC and 4 micro servos
- Quality features include built-up wood wings, fiberglass fuselage pod and carbon fiber tail boom
- An included folding propeller provides for smooth gliding and damage-free landings



A micro receiver and two micro servos fit neatly inside the fiberglass fuselage.

GPMA1815 Kunai 1.4M EP Sport Glider ARF
 GPMA1816 Kunai 1.4M EP Sport Glider Rx-R
Wingspan: 55 in (1,395 mm)
Weight Range: 20-21.5 oz (565-610 g)
Wing Loading: 9.4-10.1 oz/ft² (29-31 g/dm²)
Length: 36 in (915 mm)

From the Experts:

Aggressive climbing...exciting, high-speed aerobatics...soaring. The Kunai offers the best of all worlds! It does all sport aerobatic maneuvers and allows for the use of optional spoilerons. The parts count is low for quick, straightforward final assembly. Whether you choose the ARF or the Rx-R version, you'll have a great-flying model that looks awesome — and is ready for fun FAST.

Long story short...

The versatile Kunai is sure to become a favorite flyer... with quality construction and a sleek appearance.



NEW PRODUCT**A VINTAGE BIPLANE FIGHTER**

- Sized for easy transport without disassembly
- Can be equipped with an inexpensive and readily available motor, ESC, battery and radio gear
- The fiberglass cowl is trimmed and finished with a painted feather design
- Delicate scalloping on the wings' trailing edge and a complex, six-color MonoKote trim scheme replicate the original plane's distinctive style
- A complete hardware package is included

P-6E HAWK

Almost-Ready-to-Fly EP Sport/Scale Airplane



Pilot figure and aluminum spinner hub shown not included

The wheel pants feature the iconic hawk "claw" design. Landing gear fairings help complete the model's scale looks.

GPMA1164 P-6E Hawk EP Sport/Scale ARF
Wingspan: 43.5 in (1105 mm)
Wing Area: 352 in² (22.7 dm²)
Weight: 3.75-4.5 lb (1700-2040 g)
Wing Loading: 25-29 oz/ft² (76-88 g/dm²)
Length: 34 in (865 mm)

**From the Experts:**

Expect lots of attention when you show up at the field with this quality-built ARF! Fellow pilots won't believe it didn't take weeks or even months to have your P-6E Hawk flight-ready, but it's true. Great Planes has taken care of much of the amazing detail for you, including the unique trim scheme. And in the air this beautiful biplane exhibits sport flying characteristics worthy of the original P-6E Hawk.

Long story short...

Relive the glory days of the biplane warbird with this stunning sport/scale replica of the P-6E Hawk!

THE BEST BATTERIES — NOW EVEN BETTER, WITH EVEN MORE CHOICES!

LiPo Batteries



- Five new series to choose from: FPRX packs for receivers, plus 25C, 30C, 50C and 70C packs for performance
- Color-coded labels make series easy to identify at a glance
- All balanced packs* come with the popular XH balancing plug, the new industry standard
- Ultrasonically welded cell tabs and balancing leads for superior strength and dependability
- 2-year limited warranty on all packs



Most packs feature the new high-efficiency Star Plug.

*except FPRX packs

FP Series batteries can be charged at higher rates!

All FP Series* LiPo packs can accept charge currents up to 3C.

*FPRX batteries can only accept charge currents up to 1C.



To see all the FlightPower LiPo packs, visit flightpowerbatteries.com.



From the Experts:

FlightPower LiPos routinely deliver like-new performance even after 100, 200, 300 cycles or more — and now there's even more to like about these premium packs. The more extensive selection now includes 5 new series, encompassing 25C, 30C, 50C and 70C, plus FPRX packs for receivers. And FlightPower LiPo packs are value-priced to offer you more performance and battery life for your hobby dollar.

Long story short...

FlightPower has a top-quality LiPo battery for every hobby application!

A COMPACT, 4-STROKE GASOLINE POWERHOUSE

GF30 4-Stroke Gasoline Engine w/F6040 Muffler

- Traditional 4-stroke benefits with the ease and economy of gasoline power
- Fits on the same beam mount as the GT22
- Quick, powerful throttle response
- Rear-mounted O.S.-designed carb with PD-08 fuel pump
- Lightweight IG-07 ignition module accepts up to 2S LiPo power
- PCV (Positive Crankcase Ventilation) system recirculates blow-by gas and oil waste for a cleaner engine and environment



OSMG0798 GF30 4-Stroke Gasoline Engine w/F6040 Muffler

Displacement: 1.827 cu in (29.94 cc)

Bore: 1.496 in (38.0 mm)

Stroke: 1.039 in (26.4 mm)

Practical RPM Range: 1,800-9,000

Output: 2.8 ps/2.76 hp @ 9,000 rpm

Weight:

Engine: 34.9 oz (990 g)

Muffler: 4.0 oz (113 g)

Ignition Module: 3.35 oz (95 g)

Props: 16 x 10, 17 x 8, 17 x 10, 18 x 6W, 18 x 8

O.S. ENGINE



Long story short...

The GF30 is THE power plant for models designed for 120-150 glow engines or 20cc gas engines. Realistic sound makes it ideal for scale aircraft — and aerobatic and sport models will benefit from its gasoline-sipping economy and impressive torque!

THE CONVENIENCE OF GLOW IN A GAS ENGINE

GGT15 Gasoline Engine w/E4040 Muffler

- Uses a glow plug instead of a spark plug for ignition
- Simple starts using a glow driver — no ignition module required
- Uses a typical 50:1 fuel:oil mixture
- Features a 61H carburetor with PD-8 pump system
- Equipped with special shell-type roller bearings
- A great power plant for 2-stroke .60 class and 4-stroke .91 class models



OSMG1513 GGT15 Gasoline Engine w/E4040 Muffler

Displacement: 0.912 cu in (14.95 cc)

Bore: 1.091 in (27.7 mm)

Stroke: 0.976 in (24.8 mm)

Practical RPM Range: 2,000-11,000

Output: 2.35 ps/2.32 hp @ 15,000 rpm

Weight:

Engine: 21.5 oz (610 g)

Muffler: 6.28 oz (178 g)

Ignition Module: 3.35 oz (95 g)

O.S. ENGINE



Long story short...

Glow plug ignition makes the GGT15 a unique 15cc gasoline engine — its performance is the icing on the cake!

CRUSH THE COMPETITION!

Crusher Brushless ESC & Crusher/Ballistic 550 System

- The ultimate multi-function speed control, ideal for rock crawlers, rock racers, short course trucks, sport racing and other heavy-duty applications
- Simple Tuner™ firmware comes pre-loaded with four of the most popular profiles, and all are 100% customizable
- Auto Detect motor feature eliminates setting changes and adjustments when switching motors
- Other great features include X-Drive™, Dynamic Timing Advance™ and One-Touch Setup™
- Available paired with a Novak Ballistic 550 brushless motor to create an unbeatable team!



NOVM1834 Crusher Brushless ESC
NOVC3086 Crusher/Ballistic 550 4x4 SCT Brushless System



Long story short...

The Crusher ESC provides power, response and speed at your fingertips for a wide variety of applications!

Just Released



Duratrax® Vinyl Masking Tape

THE accessory for professional-looking paint results!

- Ideal for achieving crisp paint lines
- Conforms easily to compound curves
- Available in four popular widths
DTXR5000 Vinyl Masking Tape 1/16"
DTXR5001 Vinyl Masking Tape 1/8"
DTXR5002 Vinyl Masking Tape 1/4"
DTXR5003 Vinyl Masking Tape 1/2"



TrakPower™ 2S 7.4V 5800mAh 90C Hard Case LiPo Battery

The shape of things to come in car batteries.

- Square pack design improves weight distribution and balancing, which improves overall handling
- 90C discharge rate delivers insane acceleration response
- Replaces side-by-side saddle pack configurations and eliminates the need for a jumper wire
- Comes equipped with 5mm discharge connectors for increased performance

TKPC0626 2S 7.4V
5800mAh 90C Hard
Case LiPo Battery

TAKE HOME THE PRODUCTS THAT TOOK HOME THE AWARDS!

Announcing R/C's top winners among helis, chargers and electric buggies!

Duratrax, Heli-Max and Team Associated have recently been recognized by leading hobby publications for their innovative products — and these products are available NOW and ready to excite and amaze!

The awards were presented at the RCX Banquet in May, and are considered among the industry's most coveted. Visit your favorite hobby retailer today and see for yourself what the buzz is all about!

The Onyx 245 claims R/C Car Action's Reader's Choice Award for chargers!



With the capability to handle NiCd, NiMH, LiPo and LiFe batteries, along with built-in balancing that maximizes life and performance, it's easy to see why the Onyx 245 AC/DC Dual Balancing Charger was chosen by consumers as the industry's best. This is the seventh win for Duratrax, illustrating the company's continuing commitment to engineering top-quality hobby products.



DTXP4245



Duratrax product manager Shane Curry accepts the 2014 Reader's Choice Award for the Onyx 245 charger.

Model Airplane News tabs the BLACK HAWK heli for its Editor's Choice Award!

BLACK HAWK

Heli-Max has replicated the UH-60 BLACK HAWK heli down to the last scale detail — while also equipping it with a 4-blade rotor head, torque tube-driven tail and the TAGS™ gyro system that delivers total flying control. Those are just some of the reasons why this iconic model was the Editor's Choice as the top R/C heli in just its first year.



Bob Klecka, product manager for the Heli-Max BLACK HAWK development team, receives the 2014 Editor's Choice Award.



Heli-Max

HMXE0838

Team Associated earns TWO prestigious honors for the B5 and B5M buggies!



In a rare double victory, Team Associated's RC10B5 and mid-motor RC10B5M took R/C Car Action's Reader's Choice Award for Best Electric Buggy, as well the magazine's Editor's Choice Award for Car of the Year. Area 51 engineers developed a new narrow tub chassis that keeps the B5 buggy's weight more centered — while also outfitting it with race-proven Factory Team equipment. For even greater handling on high-speed, high-grip track surfaces, the B5M positions the motor mid-chassis for exceptional balance.



ASCD9001

ASCD9003

MODEL
Airplane
NEWS
RADIO CONTROL
car action



R/C'S MOST EVOLVED 2WD BUGGY — WITH HIGH-PERFORMANCE HOP-UPS

DEX210^{V2}

1/10 Scale 2WD Electric Buggy Kit

The engineers at Team Durango have incorporated more than 20 new upgrades into the latest version of the championship-winning DEX210 buggy — resulting in a 2WD electric off-roader with the adjustability and performance features that demanding drivers look for. And to get even more out of your machine, check out the complete parts at the bottom of the page!



Futaba

TrakPower
SPEED EQUIPMENT

Duratrax

S9551 Digital Low-Profile High-Speed/Torq Servo
FUTM0661

175T Stock Sensored Brushless Motor
TKPC5045

Persuader 1/10 Buggy Tire Front 2WD C4 Clay
DTXC4001

R614FS 4-Channel 2.4GHz FASST Receiver 4PKS
FUTL7635

MS-1 100A Sensored Brushless ESC
TKPM0010

Persuader 1/10 Buggy Tire Rear C4 Clay
DTXC4003

LiPo 2S 7.4V 5600mAh 90C Hard Case 5mm
TKPC0616

TDRC0011 DEX210v2 1/10 Scale 2WD Electric Buggy Kit
Length: Mid-motor/13.2 in (335 mm); Rear-motor/14.5 in (368 mm)
Width: 9.6 in (245 mm)
Wheelbase: 10.6-11.2 in (274-282 mm)
Weight: 3.6 lb (1.65 kg)
Buggy shown with option parts not included in the kit.



GET AMAZING AIRPLANES AND FANTASTIC FREE MERCHANDISE!

www.gpdealer.com

www.gpdealer.com

the really **big** airplane rebate



There's no better way to kick off the R/C flying season than with a new airplane — and now you can get FREE MERCHANDISE too! The Really Big Airplane Rebate features over 85 top-of-the-line ARFs, RTFs, Tx-R and Rx-R models, and when you purchase one by August 31, 2014, you'll be eligible to receive a certificate worth UPTO \$50 towards quality R/C products from over 30 popular brands!

With so many airplanes to choose from — including electrics, glow-powered, sport models, aerobats, warbirds and giant scale — you're sure to find your favorites from top brands such as Great Planes, Flyzone and Top Flite. And just imagine what you can do with a merchandise certificate worth up to \$50!

Visit your participating hobby retailer NOW and get more than just a great airplane: get quality R/C merchandise for FREE!

Over 85 airplanes included

To see the complete list, go to BestRC.com and click on the Really Big Airplane Rebate banner. You'll also find all the information about the event, as well as a downloadable Merchandise Certificate request form.



\$50

Top Flite Giant Scale
Focke-Wulf Fw190 ARF
TOPA0706



\$30

Great Planes Reactor
1.60-50cc ARF
GPMA1420



Top Flite Cessna®
182 Skylane® .60 ARF
TOPA0906



\$15

Flyzone Sensei
Sport Trainer RTF
FLZA3010



\$10

Great Planes Cirrus SR22
Turbo EP ARF 50.5"
GPMA1166



\$5

Flyzone Calypso
EP Glider ARF
FLZA3006



©2014 Hobbico®, Inc. Void where prohibited. Some terms, conditions and restrictions apply, and only while supplies last. Available only at participating local hobby shops in the U.S. and Canada. Rebates apply to purchases made between June 15 and August 31, 2014. Rebates are not distributed in stores. Official rules and downloadable rebate request forms are available at BestRC.com. Rebate requests must be submitted by September 30, 2014. All trademarks are the property of their respective owners.

CREATE A GREAT RADIO SYSTEM WITH A FREE TACTIC RECEIVER!

It's THE transmitter for Tx-R aircraft...and through August 31, 2014 when you buy a Tactic TTX650 you'll also receive a TR625 6-channel 2.4GHz Twin Antenna receiver AT NO EXTRA CHARGE! It's the perfect accessory for creating a great radio system, and it's yours FREE with your transmitter purchase!

FREE!



TTX650
6-CHANNEL SLT COMPUTER RADIO

TTX650 6-Channel 2.4GHz Computer Radio
TACJ2650



A **\$44⁹⁹**
retail value!

TR625 6-Channel 2.4GHz Twin Antenna Receiver
TACL0625

TACTIC™

©2014 — Hobbico®, Inc. This offer is available only to residents of the U.S. and Canada, and only from participating hobby shop. Items are subject to availability with no substitutions. Ask your participating hobby shop for details.

THESE BUGGIES COME WITH A BONUS!

Experience the nitro-powered realism of the 835B — or the brushless electric speed and performance of the 835E — and enjoy a \$40 spending spree at your hobby shop! All you have to do is purchase either one of these exciting Ready-To-Run buggies by August 31, 2014, and you'll receive a certificate worth \$40 towards quality merchandise from over 30 top brands!

\$40 Mail-in
Merchandise Certificate



835B Nitro Buggy

- Offers realistic off-roading action with a SuperTigre G-27CX engine

DTXD72**



835E Electric Buggy

- An Onyx brushless power system provides incredible acceleration

DTXD78**



©2014 — Hobbico®, Inc. Void where prohibited. Some terms, conditions and restrictions apply, and only while supplies last. Available only at participating local hobby shops in the U.S. and Canada. Rebates apply to purchases made between June 15, 2014, and August 31, 2014. Rebates are not distributed in stores. Official rules and downloadable rebate request forms are available at BestRC.com. Rebate requests must be submitted by September 30, 2014.

A SPECIAL OFFER FOR OFF-ROAD ADVENTURERS!

Purchase an Axial SCX10 Trail Honcho or Jeep Wrangler RTR through August 31, 2014, and you'll receive a FREE Onyx NiMH battery! It's the recommended power pack for getting the most out of these versatile machines, and it's a \$31.99 retail value!



SCX10 Trail Honcho RTR

Tame the badlands with power and performance!
AXID9022



SCX10 Jeep Wrangler RTR

Go overland with true Jeep Wrangler style!
AXID9028

FREE!

Duratrax Onyx 7.2V 3000mAh NiMH Battery

The ideal sport pack for cars, trucks and boats!
DTXC2055



**A \$31.99
retail value!**



©2014 — Hobbico®, Inc. This offer is available only to residents of the U.S. and Canada, and only from participating hobby shop. Items are subject to availability with no substitutions. Ask your participating hobby shop for details.

Jeep and related logos, vehicle model names and trade dresses are trademarks of Chrysler Group LLC and are used under license by Axial R/C Inc. © Chrysler Group LLC 2014.

GET AN AQUACRAFT BOAT — AND A LOT MORE!

The only thing better than taking your AquaCraft boat out on the water is afterward making a return visit to your hobby shop to get FREE MERCHANDISE! Through August 31, 2014, when you purchase a select AquaCraft model you'll be eligible to receive a certificate worth up to \$25 that you can spend on quality merchandise from over 30 top brands!



\$15 Mail-in
Merchandise Certificate

AQUB01** Paradise FRP Sailboat RTR
AQUB60** Bristol Bay Fishing Boat RTR

\$25 Mail-in
Merchandise Certificate

AQUB59** Atlantic Harbor Tugboat RTR
AQUB0200 Vela One-Meter Sailboat 2.4GHz RTR
AQUB5700 Rescue 17 Fireboat RTR



©2014 — Hobbico®, Inc. Void where prohibited. Some terms, conditions and restrictions apply, and only while supplies last. Available only at participating local hobby shops in the U.S. and Canada. Rebates apply to purchases made between June 15, 2014, and August 31, 2014. Rebates are not distributed in stores. Official rules and downloadable rebate request forms are available at BestRC.com. Rebate requests must be submitted by September 30, 2014.

TURN HERE FOR GENERAL HOBBY PRODUCTS

1/24 SCALE DATSUN OFF-ROAD PICKUP

Driving the truck market

Nissan has made solid pickups since 1934, but it wasn't until 1958 that they began selling them in America under the Datsun name. As soon as these trucks made their appearance, they left an indelible mark on the American truck market. Datsun trucks were notably smaller, more efficient and less polluting than domestically produced units for little reduction in horsepower. The model 720 was equipped with an overhead-cam 103 horsepower NPS-Z 2.4 liter engine. **Kit features** an opening hood, 4-cylinder engine, bumpers and decals.

85-4321 RMXS4321 Total Parts: 50 Skill Level: 2 Length: 7.4 in (187 mm)



1/35 SCALE ARMORED HALF TRACK

Bring them down

They hear the shriek—the thunderous combination of mechanical and natural noise as the Stuka turns into a dive, blazing fire at the column. These machines have torn apart Allied machines from France to the Crimea... but they won't today. The powered mount traverses. The gunner lines up the sights and hits the triggers. Twin .50 cal machine guns cut loose with a whirlwind of lead, sending the Swiss-cheese Stuka straight to the dirt. One down. **Kit features** an anti-aircraft variant half-track with gunner, driver and crew figures.

85-0034 MONS0034 Total Parts: 84 Skill Level: 2 Length: 7 in (177.8 mm)



1/24 SCALE TOM DANIEL'S CHERRY BOMB

Red hot rods

Two of the wackiest rides you'll ever see in one kit! Tom Daniel™ designed the "Cherry Bomb" and its accompanying chopper, so you know they're going to be sweet rides. The futuristic racer includes a bubble canopy that shows off the detailed interior as well as a view bubble that exhibits the turbine power plant. And right behind that sweet ride is a chopper with a "cherry bomb" gas tank on a custom trailer. **Kit features** opening bubble top, turbine engine with clear hood, detailed custom motorcycle and trailer, full decals.

85-4191 MONS4191 Total Parts: 65 Skill Level: 2 Length: (Car): 6.7 in (170 mm),
(Trailer): 11.3 in (286 mm)



1/32 PANZER IV

Armored fist of the Third Reich

In all its wars, Germany excelled at maneuver warfare. However, it wasn't until the invention of the reliable, quick, and extremely powerful Panzer IV that the German Panzer Corps really waged a blitzkrieg. Upgrades to the armor and armament of the Panzer IV took the tank from an infantry support role and made it a powerful weapon for confronting nearly any enemy. In the end, simple numbers defeated superior design. The number of Shermans and T-34s produced was ten times that of Panzer IVs. **Kit features** extra equipment and two crew members.

85-7861 MONS7861 Total Parts: 197 Skill Level: 2 Length: 8.6 in (218 mm)



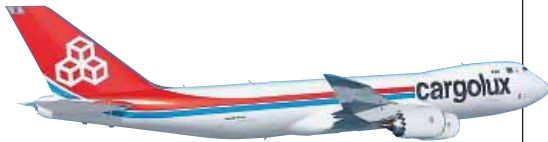


1/72 SD. KFZ. 164 NASHORN

Nazi Germany's tank hunter

Deployed for the first time at the Battle of Kursk, the Nashorn (rhinoceros) was a powerfully-armed tank destroyer fielded by the Wehrmacht. These vehicles were based on robust and reliable Panzer III and IV chassis and equipped with the most powerful anti-tank gun of the day, the Pak 43. An extra-ordinarily powerful 8.8 cm gun, the Pak 43 was fully capable of punching a round through six inches of solid steel plate at ranges up to and exceeding one mile. **Kit features** an authentic interior, moveable cannon and decals for three versions.

03148 RVLS3148 Total Parts: 184 Skill Level: 5 Length: 4.6 in (118 mm)



1/144 BOEING® 747-8F CARGOLUX®

The finest of freighters

Passenger airliners get all the attention, but cargo planes are equally important. Hundreds of cargo planes ply the skies, carrying goods to and from widely separated countries. Cargolux started freighting cargo between Luxembourg and Hong Kong in the 1970s. Today, the airline ships to several countries using the state-of-the-art 747-8F. This aircraft carries more cargo with a lower fuel burn rate than its predecessor—making the planet more green while saving Cargolux green! **Kit features** cockpit, undercarriage bays and legs, full super decal set with Cargolux emblems.

04885 RVLS4885 Total Parts: 167 Skill Level: 5 Length: 20.7 in (525 mm)

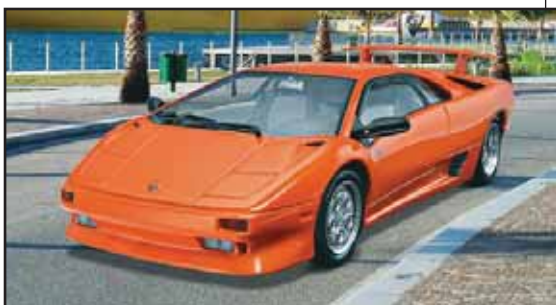


1/72 DGZRS RESCUE BOAT WALTER ROSE/VERENA

Savior of the seas

The German Maritime Search and Rescue Service has saved more than 80,000 people from the clutches of the ocean. Ships like the Walter Rose make that possible. This 30 foot (9.5 m) ship has a delta hull and is designed to handle well in any seas. Since 2012, the Walter Rose has been stationed on the Kiel Fjord—ready to respond to emergencies on that busy waterway. **Kit features** a single-piece hull, radio and radar masts, display stand and full decals for the Walter Rose and Verena variants.

05214 RVLS5214 Total Parts: 49 Skill Level: 3 Length: 5.1 in (130 mm)



1/24 LAMBORGHINI® DIABLO VT

Luxury at 200 mph

Can't take your eyes off it? That's alright, you're not supposed to. The Diablo is a model of ostentatious expenditure; designed exclusively to let the really, incredibly wealthy display how rich they are. Topping out at over 200 mph, the Diablo VT is the high-tech, 4WD chariot of the new royalty. Everybody else just gets to drool. If you've got enough cash for three nice houses, then you can afford one Diablo. Fortunately, there's a model version for the rest of us. **Kit features** extensive details and decals for eight registrations.

07066 RVLS7066 Total Parts: 81 Skill Level: 4 Length: 7.3 in (186 mm)

1/200 SCALE BOEING® 787-8 “DEMONSTRATOR 1ST AIRCRAFT”

The “Dreamliner®” makes its debut

First flown in December 2009, the 787-8 Dreamliner is the most fuel-efficient commercial airliner in the Boeing fleet. The 787-8 spans 197 feet (60 m), measures 186 feet (57 m) long and boasts a range of 7,650-8,200 nautical miles (14,170-15,190 km). With the 787-8’s 210-passenger capacity and impressive reach, Boeing is looking to replace its aging extended-range 767-200ERs and 767-300ERs. This limited edition **kit features** display stand parts and one decal marking option: 1. Boeing 787-8 1st aircraft, Code: N787BA (ZA001).

10807 (Limited Edition) HSGS0807 Total Parts: 64 Skill Level: 3

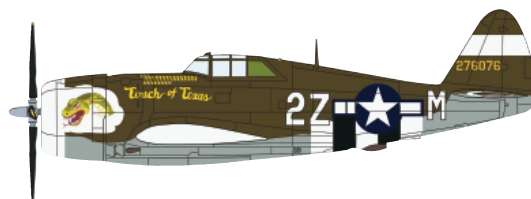


1/72 SCALE P-47D THUNDERBOLT (RAZORBACK/BUBBLETOP) (2 KITS)

Fly with Zemke’s Wolf Pack

Hubert Zemke was one of the few USAAF fighter commanders that really believed in the Thunderbolt. His contemporaries believed that fighters had to be the fastest and most maneuverable things in the air in order to survive. Zemke proved that, with tactics and tenacity, the Thunderbolt could take down anything in the air. The 56th Fighter Group “Zemkes Wolf Pack” were credited with over six-hundred kills in the Thunderbolt. This limited edition **kit combo features** both a razorback and bubbletop variant Thunderbolt with two decal sets for each.

02099 (Limited Edition) HSGS2099 (2 Kits) Total Parts: 36 + 36 Skill Level: 3



1/72 SCALE F-15J EAGLE “MSIP CONFIGURATION II AIRCRAFT”

Factory-equipped with MSIP modifications.

Initiated in 1983, the F-15 Multistage Improvement Program (MSIP) ensured that the aircraft would receive the latest mods at regular intervals. F-15Js, which are produced in Japan under license, started receiving upgrades in 1987. The most significant changes included an upgraded central computer, more powerful engines, an all-around Infrared Search and Track setup and a J/APQ-1 countermeasure set. These mods allow it to more effectively find and engage targets. This limited edition **kit features** GPS antenna andIRST seeker parts plus two sets of decals for the JASDF.

02100 (Limited Edition) HSGS2100 Total Parts: 144 Skill Level: 3

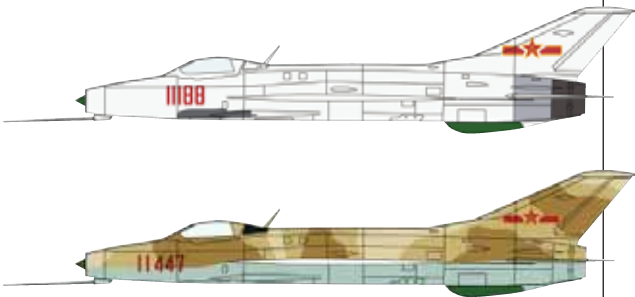


1/72 SCALE F/A-18F SUPER HORNET VFA-41 “Black Aces” CAG

VFA-41 was formed in the closing days of WWII and never saw action in that conflict, but they’ve certainly made up for lost time in the years since! Most recently, the group has flown missions in the new F/A-18F Super Hornet in support of the wars in Iraq and Afghanistan. The group’s F/A-18F fighters are perfect for a wide range of missions—everything from in-flight refueling to deployment of precision-guided munitions. This limited edition **kit features** new nose landing gear covers and two sets of decals for “Black Aces” aircraft.

02101 (Limited Edition) HSGS2101 Total Parts: 121 Skill Level: 3





1/72 SCALE J-7 "CHINESE AIR FORCE" (2 KITS) The "People's" sixties standby

The Chengdu J-7 was developed out of the failed collaboration between China and the Soviet Union on production of the MiG-21. Like the MiG-21, it was an effective weapon for its era and was produced in large enough numbers to be a severe threat. Continuous improvements to the aircraft's equipment and performance since the aircraft's introduction in 1966 have resulted in an aircraft that is still highly capable today. This limited edition **kit combo features** decals for two Chinese Air Force J-7 fighters.

02102 (Limited Edition) HSGS2102 (2 Kits) Total Parts: 36 + 36 Skill Level: 3

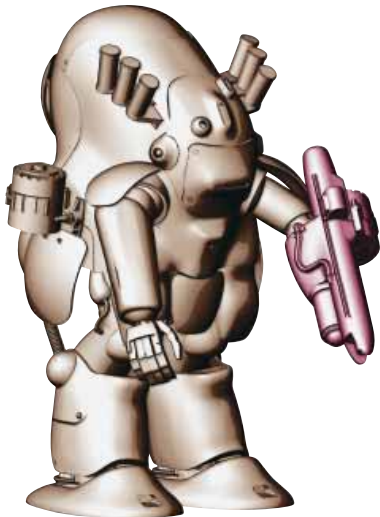


1/24 SCALE MINI COOPER® S COUNTRYMAN® ALL4® "RAY PACKAGE"

A cool, classy crossover

Unveiled to the public at the 2010 Geneva Motor Show, the Mini Countryman is the brand's first crossover SUV. It is the first 5-door model Mini has produced after being acquired by BMW®. The Countryman has a longer wheelbase and more interior room than other Minis. The "ALL4" four-wheel-drive model lets drivers take the Countryman off-road into rugged terrain. This limited edition **kit features** "Ray Package" markings and black plastic molding with fluorescent racing stripes.

20262 (Limited Edition) HSGS2262 Total Parts: 108 Skill Level: 3



1/20 SCALE TYPE MK44 AMMOKNIGHTS COMBO Upgrade to full auto

In the dark, futuristic world of Maschinen Krieger most of Earth's population was burned to ash by World War IV. As life returns, war erupts. The power-suited soldiers of the IMA struggle against the roving robots of the SDR. Innovation and adaptation is the key to the IMA's victory. New on the field are a sophisticated smart gun and a fixed arm gun—perfect for blowing apart mindless SDR constructs at maximum range. This limited edition **kit combo features** two powered suits with smart gun and fixed arm gun armament.

64107 (Limited Edition) HSGS4107 Skill Level: 3



1/48 SCALE MITSUBISHI F-2A Sweeping the skies for Sukhois

The Mitsubishi® F-2A is an improved F-16. These multi-role fighters have significant air-to-air, air-to-ground and air-to-sea capabilities, making them ideal for the JASDF. High top speeds give them nearly as much performance as contemporary dedicated air superiority fighters. Its multi-role ability allows it to act as a force multiplier for ground, air and sea forces. Just under 100 were jointly produced by the US and Japan and they are still the main fighter of the JASDF. Limited edition **kit features** new photo-etched parts and three sets of JASDF decals.

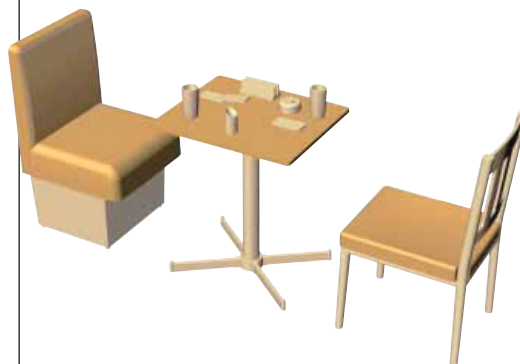
52121 (Limited Edition) HSGS5221 Total Parts: 179 Skill Level: 3

1/12 SCALE FAMILY RESTAURANT TABLE AND CHAIR

Satisfied from check in to "check please"

The furniture's worn, the menu's greasy and there's gum on the bottom of the table, but there's just something special about this little restaurant. Maybe it's the waitress's smile, maybe it's that they serve good food and plenty of it or maybe it's just that when you're here, you feel at home. Whatever it is, it's priceless. Give your 1/12 scale scene a touch of class with this kit which **features** a table, chair, sofa, menu stand, cell phone, buzzer, smart phone and two cups.

62007 HSGS6207 Total Parts: 20 Skill Level: 3

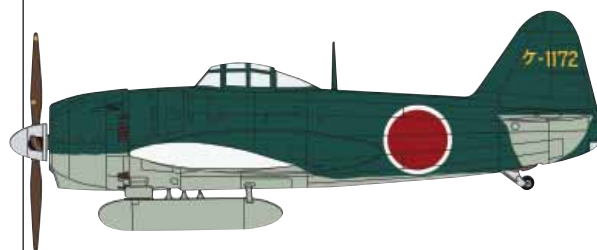


1/48 SCALE KAWANISHI N1K1-JB SHIDEN (GEORGE) OTSU "GENZAN FG"

Take command of "Violet Lightning"

A late-WWII favorite of the IJN, the N1K1-Jb Shiden ("Violet Lightning") was developed as a land-based revamp of the Kawanishi N1K1-J Kyofu floatplane. Type 11 models featured a 1,990 hp (1,484 kW) Homare 21 engine, two 7.7 mm Type 97 machine guns and dual 20 mm Type 99 cannons. This limited edition **kit features** upper main wing parts, cowl parts, machine guns and bombs, plus two marking options: 1. IJN Genzan NFG, Code: Ke-1172, Korea, Genzan AB, April 1945 and 2. IJN Yatabe NFG, Code: Ya-1168, Yatabe AB, February 1945.

07378 (Limited Edition) HSGS7378 Total Parts: 93 Skill Level: 3



AMT® 1/25 Scale 1962 Chevy Bel Air Super Stock

Joe Gardner's "Northwind" is blowing in!

The Chevy Bel Air is built for comfort and style, but that doesn't mean you can't make it into a high-performance monster! Drop a 409 horsepower Turbo-Fire engine in just about anything and it will roar like a freight train, put one in a Chevy Bel Air and it will go "like the wind". Joe Gardner turned his Bel Air into a Super Stock drag racer and went on to wow crowds everywhere. **Kit features** a 2-in-1 model you can build as a drag racer or a show model.

AMT865 AMTS0865 Skill Level: 2

Plastic Models



AMT® 1/25 1965 Ford Mustang® Funny Car

A 'Funny' car with serious horse

Designed for drag, funny cars are some of the most powerful vehicles around. So many modifications are made to these vehicles that they rarely resemble production models. This 1965 Mustang fastback kit is from the early days of "Funny Cars" and it comes equipped to win! **Kit features** altered wheelbase, stripped down interior, injected 427 drag motor, mag wheels with skinny tires in the front, big slick tires at the rear, full decal set with new graphics, and vintage "Retro Deluxe" packaging.

AMT888 AMTS0888 Skill Level 2





Italeri® 1/48 Hawker Typhoon Mk.IB Late

Brewing up a storm of lead

With a total load out of four 20 mm cannons and 900 pounds of rockets and bombs, the Hawker Typhoon was perfect for shredding ground targets. In the run up to D-Day, the Mk.IB was used extensively for destroying lines of communication and railways. Napier Sabre engines allowed the aircraft to buzz the treetops at over 400 mph (650 km/h). War is tough, and there's only one original Hawker Typhoon left in the entire world; but you can build this detailed kit and see one every day! **Kit features** detailed decals for four versions.

2734 ITAS2734 Skill Level: 3 Length: 7.9 in (202 mm)



Italeri® 1/720 USS George H.W. Bush CVN-77

Working for freedom

Projecting the power of a nation far across the oceans isn't easy, but the George H.W. Bush and her nine sister ships in the Nimitz class are up to the task. At over 1,000 feet long and displacing more than 100,000 long tons, the George H.W. Bush is one of the largest and most sophisticated warships on the planet. The vessel is a nuclear-powered floating city with a resident population of nearly 6,000 sailors and aircrew. The ships air wing is comprised of ninety aircraft which stand ready to fight at a moment's notice.

5534 ITAS5534 Skill Level: 2 Length: 17.5 in (447 mm)



Minicraft® Models 1/144 Scale KC-135R

Refuel with small-scale realism.

Few aircraft have served the U.S. Air Force and Air National Guard for as long as the KC-135R Stratotanker. "R" models were distinguished by their CFM-56 engines, which produced between 18,000 and 34,000 pounds of thrust force each. The KC-135R replaced the KC-135E which had been equipped with engines from older model Boeing 707s. These newer, more powerful engines reflected the gradual shift in the responsibility of tankers from fueling massive strategic bombers to fueling smaller, faster strike aircraft. **Kit features** all new tooling and USAF marking decals.

14708 MMIS4708



Minicraft 1/144 Scale EC-121R Batcat

Always listening

As part of the multi-billion dollar Operation Igloo White, 25 C-121 Constellations were modified with electronic sensors and sent to Vietnam. These aircraft flew controlled patterns over the Vietnam-Laos border, collecting data from sensor spikes deployed along the Ho Chi Minh Trail. In theory, the sensors could detect the vibration of a truck out to 100 yards. The information from multiple sensors could give command an idea of where the convoy was going and strike aircraft could clean house. Unfortunately, technological limitations made the plan into little more than a costly historical footnote. **Kit features** unique markings for two E2121R "Bobcats" of the 553rd and 554th Recon squadrons.

14715 MMIS4715



Moebius® Battlestar Galactica Upgrade Set

Detail up your Galactica!

You put a lot of work into your Galactica* and you want it to look perfect, or you didn't put much work into your Galactica and you want it to look better; either way, the Galactica Upgrade Set is perfect for you! It includes photo-etched museum windows, tons of additional decals for detailing, and, of course, detailed gun turrets so you can shoot down Cylons in style! You're the last remnant of the human race; do try to make us look good! Recommended for experienced modelers.

* Galactica plastic model MOES0915

1011 MOES1011

Moebius 1/25 Scale 1956 Chrysler 300B Tim Flock

Faster

Karl Kiekhaefer, owner of what would become Mercury Marine, brought Tim Flock out of early retirement with an offer of \$40,000. Karl then equipped Tim and the rest of his racing team with the new, top of the line, and exorbitantly expensive Chrysler 300B. With the best cars, the best driver and a surplus of engineering talent at their beck and call, Kiekhaefer's team swept nearly every race they entered in 1955 and 1956. **Kit features** stock car parts plus full decals for the Tim Flock racer. The kit will have limited production.

1212 MOES1212



Moebius® Munster's House Finished

Your favorite Monster abode, now complete!

Take three classic horror movie monsters, put them in a house in America, add in a little romance, a little conflict and a lot of humor and you get—one of the most underrated television shows in American history. The Munsters was a masterpiece from minute one. An homage both to classic horror and family values television. The characters were great, and the creepy, creaky house at 1313 Mockingbird Lane was the ultimate monster madhouse. Now you can own a completed miniature Munster mansion! **Model** is pre-built, no assembly required.

2929 MOES2929

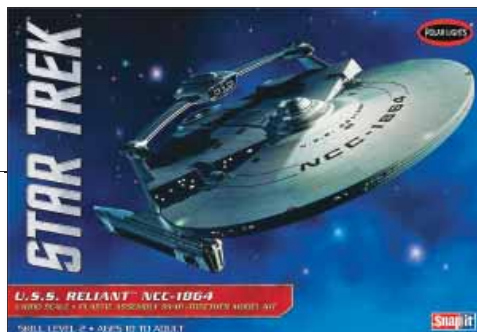


Polar Lights® 1/1000 Scale Star Trek® USS Reliant® NCC-1864

Feel Khan's wrath

True Trekkies will recognize the USS Reliant from its appearance in 1982's "Star Trek II: The Wrath of Khan." In the film, the Reliant is commandeered by the archvillain Khan, who uses it to pursue the Enterprise during an exciting cat-and-mouse chase inside the Mutara Nebula. Over thirty years after its original release, "The Wrath of Khan" remains the most popular of all the Star Trek films. This all-new **kit features** easy snap-together assembly, a dome base with metal support rod and decal markings.

POL906 PLLS0906 Skill Level: 2



Tamiya 1/20 McLaren MP4/7 and MP4/8

These two high-powered kits are the 'Formula' for a winning collection!

Team McLaren built two of the greatest Formula One racers of the nineties, the MP4/7 and MP4/8. The MP4/7's V12 Honda® engine carried it to five Grand Prix wins for a second place overall turnout. One year later, the Ford® V8 powered MP4/8 also blazed to five wins and, once more, filled second place overall. Both vehicles featured McLaren's first semi-automatic transmission, which let them shift without taking off the gas. **Kit features**, 4/7: decals for Senna and Berger's racers; 4/8: decals for Senna, Andretti, and Hakkinen's racers.

25171/25172 TAMS5171/5172 Length (4/7): 8.9 in (226 mm) Length (4/8): 8.5 in (215 mm)



Trumpeter® 1/48 US A-37A Dragonfly Ground Attack Aircraft

Training's over, this is the real thing

Dragonfly aircraft were converted from Cessna trainers into twin-turbojet equipped ground attack aircraft. They were exceptionally adept at close air support, extremely reliable, and much easier to maintain than the average military aircraft of the day. All those factors led to a comparatively very low loss rate. Despite those advantages, the Dragonfly was frequently sidelined as the contemporary Phantom II could carry eight times as much ordnance per sortie. Later variants of the Dragonfly would be upgrades with greater ordnance capacity and improved performance. Many served in the Panama invasion. **Kit features** photo-etched details and includes numerous armament loads.

2888 TSMS2888 Total Parts: 170



ESTES SHOW STOPPER E2X

Wow the crowd!

- Uniquely detailed design.
- Includes 15 in (38.1 cm) pre-assembled parachute.
- E2X: Requires no paint or special tools just glue together and launch!
- Requires engines, launch pad and controller, recovery wadding, starters, glue and launch controller batteries.

ESTT2466 Show Stopper E2X

Max. Altitude: 875 ft (266 m)

Height: 26.2 in (665 mm)

Diameter: 1.6 in (42 mm)

Weight: 4 oz (113 g)

Recommended engines: C11-3 (first flight), C11-5, D12-5, D12-7.



Long story short...

The Show Stopper is a sure-fire hit with any flight fanatic!

TRAILBLAZER N-SCALE TRAIN SET

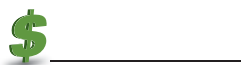
The iron road everyone wants to travel!

- 4-6-0 steam locomotive with tender and operating headlight
- Rolling stock: box car, gondola, single-dome tank car and caboose
- 34" x 24" (864 mm x 610 mm) oval of snap fit E-ZTrack®
- Train station
- 24 railroad and street signs, plus 12 telephone poles
- Power pack, speed controller and instruction manual

BACHMANN



BACU6715 Trailblazer N-Scale Train Set



Long story short...

The Trailblazer N-Scale Train Set has everything you need to get on track to a real Old West masterpiece. Get yours today, run it for years to come!

TURN HERE FOR RADIO CONTROL PRODUCTS