

GREAT NEWS[®]

GREAT PLANES MODEL DISTRIBUTORS

RADIO CONTROL • MARCH 2013



PLUS:

Axial[®] SCX10 Jeep[®] Wrangler Kit
Page 2-3

Tactic[™] TTX650 6 Channel
2.4GHz Computer Radio
Page 6-7

New Flyzone[™]
Airplanes
Page 8-11



Pages 4 & 5



Copyright 2013 Hobbico[®] 2003312 All rights reserved.

GREAT NEWS[®]

GREAT PLANES MODEL DISTRIBUTORS

GENERAL HOBBY • MARCH 2013

STACEY DAVID'S



MODEL KIT CHAMPIONSHIPS



PLUS:

Estes[®] Rockets
Pages 4-5

New Plastic Models
Pages 6-15

New Kites
from Brainstorm
Pages 16-18

Pages 2-3



SCX10

2012 JEEP WRANGLER UNLIMITED RUBICON

1/10th SCALE ELECTRIC 4WD #AX90027

BUILDER'S KIT

Jeep

LICENSED PRODUCT



- 1/10 scale Jeep® Wrangler Unlimited Rubicon body
- 4-link rear suspension, optimized to reduce axle steer and torque twist
- Officially licensed Poison Spyder Rock Brawler Bumpers
- WB8 Wild Boar driveline system, as simple as it is durable
- Officially licensed Maxxis Trepador tires molded in R35 compound
- Removable polycarbonate roof

- Icon Vehicle Dynamics adjustable threaded aluminum shocks
- Heavy-duty, one-piece diff locker made from sintered metal
- Electronic box protected from off-road dust and debris
- Compact, low-CG transmission allows for a wide range of gearing options

AXIC9027 - SCX10 Jeep® Wrangler Unlimited Rubicon KIT

Length: 21.25 in (540 mm)
Width: 9 in (229 mm)
Height: 9 in (229 mm)
Weight (No Electronics): 3.4 lb (1.54 kg)
Wheelbase: 12.3 in (313 mm)
Ground Clearance: 2.7 in (68 mm)

For additional items see a complete list at www.GPDealer.com

Jeep and related logos, vehicle model names and trade dresses are trademarks of Chrysler Group LLC and are used under license by Axial R/C Inc. © Chrysler Group LLC 2013.

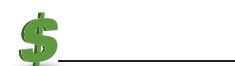


From the Experts:

The Jeep® Wrangler Unlimited Rubicon is one of those vehicles that are rarely left stock once in the hands of its owner. We understand this and have come to the table with our next offering. Our partnership with Jeep® continues with a kit version that allows you to build your Jeep®, from the ground up. If you're looking to build your ultimate dream Jeep®, this is the kit that will allow you to do it!

Long story short...

Trail running with the SCX10 Jeep® Wrangler Unlimited Rubicon is just about the most fun you can have off-roading!



THE MOST-EQUIPPED EVADER YET!

EVADER EXT2.4

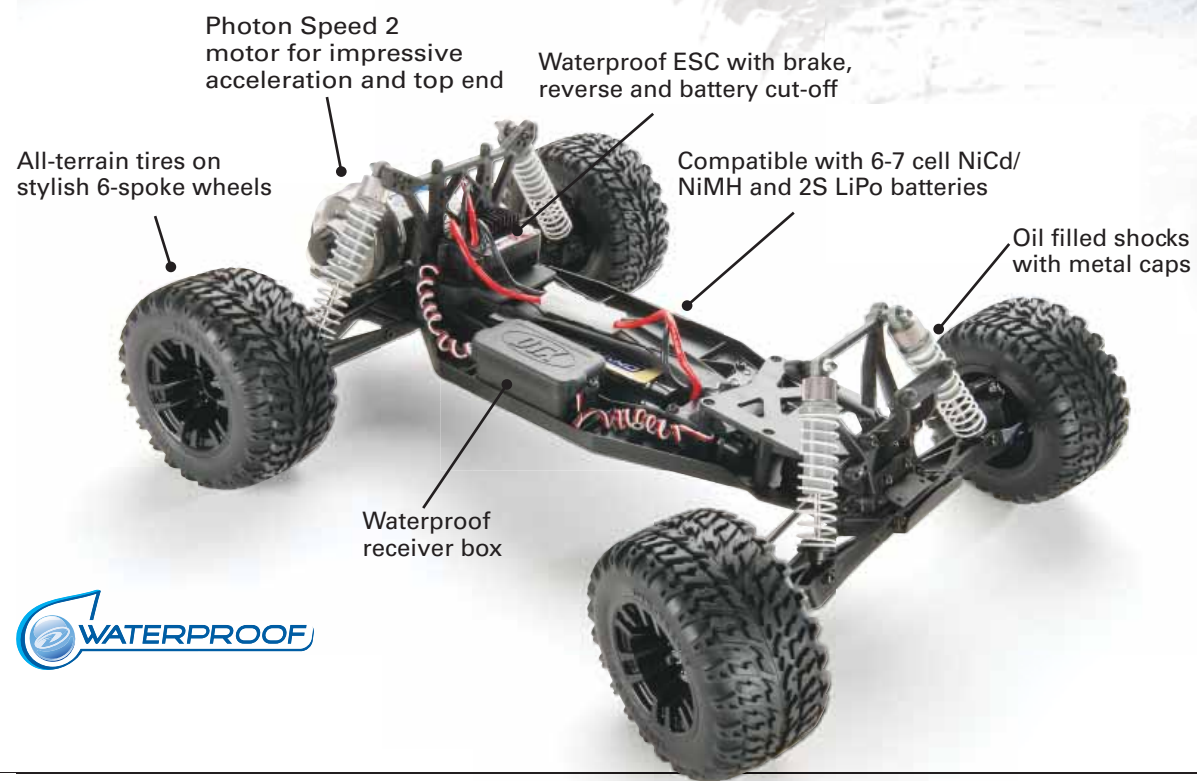
Ready to Run, 1/10 Scale Electric 2WD

It's always been tough and reliable — and now the Evader EXT racing truck platform comes so complete, it requires nothing else! A 2.4GHz radio system with "AA" transmitter batteries is included and installed. So is a Photon Speed 2 motor, SX-405WP servo and Sprint ESC, and they're all waterproof. Just charge the supplied 1500mAh Onyx NiMH battery with the accompanying wall charger — and you're ready to power down the track to a first-place finish!

- Fully waterproof components for confident driving in wet conditions
- Complete set of ball bearings
- Slipper clutch
- Wall charger, Onyx 1500mAh NiMH battery and 8 "AA" batteries included
- Painted body with clear windows in your choice of four eye-catching color schemes



Molded
MAGNAFLEX™
Parts



PROTECTED BY
**STRESS-TECH
GUARANTEE** 1 YEAR

Duratrax is so confident in the Evader EXT2.4's durability that we will cover all Stress-Tech parts with a 1-year FREE Replacement Guarantee!

DTXD33** 1/10 Scale Evader EXT2.4 RTR
Length: 16.1 in (409 mm)
Width: 12.9 in (327 mm)
Height: 6.6 in (168 mm)
Ground Clearance: 1.4 in (36 mm)
Weight: 3.6 lb (1.63 kg)



From the Experts:

The evolution of the Evader EXT2 to the EXT2.4 offers beginners and sport racers a "one-box solution" — that is, a model that comes with everything, right down to the batteries and charger. The truck itself is fully assembled and ready to go, with the same legendary toughness that the Evader line is known for.

Long story short...

For value, convenience and all-out fun, the Evader EXT2.4 leads the way!

THE TRANSMITTER FOR TX-R AIRCRAFT

TTX650
6-CHANNEL SLT COMPUTER RADIO

www.gpdealer.com

www.gpdealer.com



The Transmitter-Ready phenomenon is one of the fastest growing trends in R/C, and Tactic is on the leading edge. Introducing the TTX650, the radio that Tx-R enthusiasts will embrace as their "go-to" system. All of the features you could want in a 6-channel transmitter are here, at an unbelievable price. But it's when you pick up this transmitter and start to use it that you feel something is different, and you start to understand what Tactic is all about. You'll feel an instant connection, an appreciation for the thought that went into this radio. If you have Tx-R aircraft, take advantage of THE transmitter-Ready transmitter — the TTX650 from Tactic.

Powerful

Programming for airplanes and helicopters with more features than other radios in its class — including user updateable firmware that keeps the TTX650 as modern as the day you brought it home.

Intuitive

Pushbutton programming quickly moves you through simple menus — and the large, high-resolution graphing LCD screen makes using the TTX650 a breeze.

Evolved

Case design is engineered to fit perfectly in your hands, with easily accessible switches and trims. The high-end feel continues with a pair of quad-bearing gimbals and anodized sticks with adjustable length and tension.



Everything a sport pilot could want in a 6-channel radio:

- 20 model memory
- Easy-to-use pushbutton programming
- Large, easy-to-read graphing LCD screen with adjustable contrast
- User-selectable switch assignments
- 4 programmable mixes
- Quad-bearing gimbals
- Adjustable stick lengths and tensions
- Wireless trainer system compatible
- Compatible with all SLT receivers
- Airplane and helicopter programming

TACJ2650 TTX650 6-Channel 2.4GHz Computer Radio
— available separately —
TACL0624 TR624 6-Channel SLT Receiver



From the Experts:

You won't believe how much radio you get for the money when you purchase the TTX650! No other comparable system offers 20 model memory, and with airplane and helicopter programming you can fly virtually any aircraft. The menus are easy to read with the large graphing LCD screen. Plus, the quad-bearing gimbals offer smooth, predictable response and the sticks can be fine-tuned for a "just right" feel. It's the perfect radio for flying Tx-R models, and is sure to become your favorite!

Long story short...

With a long list of features at a reasonable price, the TTX650 is an exceptional value in a 6-channel 2.4GHz aircraft radio.

TACTIC
PURE RELIABLE 2.4



MINI SWITCH: THE 2-IN-1 AIRPLANE, NOW EVEN MORE VERSATILE!

mini
Switch™



- A breeze to transport to and from the field!
- AeroCell foam airframe with pre-applied trim
- Factory-installed brushless motor, ESC and electronics
- Quick-release battery hatch lets you spend less time switching batteries and more time flying
- Available as a convenient RTF complete with 2.4GHz radio, as well as a Tx-R Prime version that you can fly with your radio and battery



Fly the Switch in a high-wing configuration . . . or in low-wing configuration for even sportier aerobatics.



The Ready-To-Fly version includes everything needed to start flying today.

Flyzone
how high will you soar™

FLZA3320 Mini Switch RTF
FLZA3322 Mini Switch Tx-R Prime
High Wingspan: 34 in (865 mm)
Low Wingspan: 31 in (785 mm)
Length: 32.5 in (825 mm)
Weight: 20.4-21.2 oz (580-600 g)

From the Experts:

Just like the original Switch, the Mini Switch lets you go from a high-wing to a low-wing model in just a few minutes...and the compact Mini Switch can fit inside most vehicles without being disassembled. You can be at the flight line in just minutes, enjoying a wide performance envelope. Equip the Tx-R Prime version with your radio gear and battery, or go with the all-inclusive RTF with 2.4GHz radio included!

Long story short...

The Mini Switch may be smaller in size, but it still delivers big-time flying fun!

NEW PRODUCT

NEW PRODUCT

A BIPLANE WITH DISTINCTIVE STYLE AND PERFORMANCE

tiger moth

RTF
READY-TO-FLY

Tx-R
TRANSMITTER-READY

www.gpdealer.com

www.gpdealer.com

- Flight-ready in just minutes
- Flies smooth and stable in a backyard, at a park or inside a gymnasium
- Lightweight foam construction
- Lots of molded-in details
- Authentic trim scheme and 2 pilot figures* add to the realistic appearance
- Rechargeable 140mAh LiPo flight battery included
- RTF includes a Tactic 2.4GHz radio system; Tx-R comes with an SLT receiver compatible with AnyLink and Any Transmitter with SLT

Painting and installation optional

Flyzone

FLZA2060 Micro Tiger Moth RTF
 FLZA2062 Micro Tiger Moth Tx-R
 Wingspan: 15.1 in (385 mm)
 Length: 12.9 in (327 mm)
 RTF Weight: 1.1 oz (33 g)

From the Experts:

The Tiger Moth is a worthy addition to the Flyzone hangar of vintage-looking micro-size planes. The foam airframe is feather-light, yet durable enough to allow you to fly sorties in your backyard or at the park. The model's scale touches are a bonus, and you can choose from two versions: the convenient RTF with 2.4GHz radio or the Tx-R that you can control with your favorite transmitter.

Long story short...

Within minutes of opening the box you can be piloting the DH 82 Tiger Moth biplane!

COMMAND SCALE-LOOKING TANKS WITH ADVANCED RADIO SYSTEMS!

1/24 Scale Ready-To-Run R/C Battle Tanks with 2.4GHz



VSKC2003 1/24 Scale M1A2 Abrams EP Tank NTC 2.4GHz



VSKC2001 1/24 Scale M1A2 Abrams EP Tank Desert 2.4GHz



VSKC3021 1/24 Scale King Tiger Henschel EP Tank Camo 2.4GHz



VSKC2002 1/24 Scale M1A2 Abrams EP Tank NATO 2.4GHz



VSKC2061 1/24 Scale Tiger 1 Early EP Tank Gray 2.4GHz



VSKC3001 1/24 Scale M4 Sherman EP Tank Green 2.4GHz



VSKC3002 1/24 Scale M4 Sherman EP Tank Camo 2.4GHz



With the 2.4GHz spread spectrum radio system:

- A strong link with your tank is created automatically as soon as you turn on the radio
- Up to 16 VSTanks can do battle simultaneously
- You'll enjoy precise, interference-free control
- There are no crystals to worry about
- There's no antenna that can break
- You can control your tank from much farther distances (up to 160+ feet/50 meters)

These models look and perform like full-size tanks!

- Multiple forward, reverse and turning speeds
- All-wheel suspensions, to tackle inclines of up to 35°
- Turrets rotate 330°, and guns move up and down
- Lots of molded-in details, working hatches and painted driver figures
- Infrared battle system allows tank-to-tank battles and hit scoring

From the Experts:

Expand your wireless warfare options with 1/24 scale battle tanks featuring 2.4GHz radio systems! VSTanks now come equipped with spread spectrum technology that offers many advantages over 27MHz systems. Up to 16 tanks can engage each other at the same time, and you can control them from farther away. Choose your favorite scale-looking tank from many different designs and let the armored combat begin!

Long story short...

With included 2.4GHz radios, these VSTanks allow for more players, more range...and more fun!

THE NEXT GENERATION OF RACE-WINNING PERFORMANCE

Winning never gets old. And to keep winning, the Team Associated keeps tweaking the multi-time champion B4 and T4 1/10 scale 2WD electric rides. With more high-performance option parts now standard than ever before, the B4.2 and T4.2 are primed to keep the 1st place finishes coming!

Both vehicles come equipped with:



Factory Team 12mm Big Bore hard-anodized aluminum threaded shocks



Ball differential with lightweight outdrive



VTS slipper assembly featuring high-resolution spring



Updated shock towers optimized for the 12mm Big Bore shocks, T4.2 FT pictured



Factory Team 7075-T6 blue aluminum 0° rear hubs with oversized outer bearing



Factory Team 12mm blue aluminum front and rear clamping hexes with hex wheels

- Factory Team blue titanium turnbuckles
- Factory Team carbon-fiber battery strap and blue aluminum thumb screws
- Factory Team blue aluminum bellcrank set
- CVA joints with pin retainer clips
- Factory Team rear ballast weight
- Complete set of precision ball bearings
- Factory Team blue aluminum hinge pin brace, milled motor plate, servo mounts and much more
- Pro-Line Bulldog bodies



RC10B4.2 Factory Team 2WD Electric Off-Road Competition Buggy Kit



Winner of 5 ROAR National titles and 5 consecutive IFMAR World Championships
ASCD9041 RC10B4.2 Factory Team 2WD Electric Competition Buggy Kit
Length: 15.1 in (385 mm)
Width: variable*
Weight: variable*
Wheelbase: 11 in (281 mm)
*Width and weight will depend on actual electronics and tires used



RC10T4.2 Factory Team 2WD Electric Off-Road Competition Truck Kit



Unprecedented 8-time ROAR National Champion
ASCC7025 RC10T4.2 Factory Team 2WD Electric Competition Truck Kit
Length: 15.3 in (390 mm)
Width: variable*
Weight: variable*
Wheelbase: 11.3 in (288 mm)
*Width and weight will depend on actual electronics and tires used

Long story short...

Associated continues the legacy of R/C racing's most successful electrics with the RC10B4.2 FT and RC10T4.2 FT competition kits!

THE 2013 SAVAGE X 4.6 — REFINING THE BEST!

1/8 Savage X 4.6 Big Block 4WD Monster Truck RTR

The original Savage X 4.6 raised the bar for durability, Big Block power, innovative design and unrivaled performance. Now comes the newest edition of this legendary beast — better looking and better equipped than ever before!

45+
MPH!



Over \$65
of included
accessories!

These value-adding extras will get your Savage X 4.6 up and running in no time, with extra convenience as well. Just fill up with HPI Power Fuel and you're good to go!

- Rechargeable 7.2V Plazma battery
- AC wall charger
- Plazma "AA" batteries
- Glow starter
- 4-way wrench
- Fuel bottle
- Extra glow plug

- Lighter, lower CG Nitro Star F4.6 Big Block engine with nearly 3hp for massive torque and speeds of over 45 mph
- Reliable HPI 2.4GHz radio system
- Four huge Big Bore shocks
- Beefy suspension arms and reinforced "X" TVP (Twin Vertical Plate) chassis
- Super-durable 4WD drivetrain

- Easy-to-operate Nitro Start starting system included
- Newly designed GT-3 truck body in two pre-painted trim schemes
- Black chrome Warlock wheels mounted on aggressive-tread off-road tires
- Ready-To-Run right out of the box, with everything professionally assembled and tuned for exceptional performance
- Quick and easy access to differentials and transmission



HPID84** 109083 1/8 Savage X 4.6
Big Block 4WD Monster Truck RTR
Length: 21 in (534 mm)
Width: 16.8 in (427 mm)
Height: 10 in (254 mm)
Wheelbase: 13.25 in (336.5 mm)

Long story short...

With all of these refinements to the Savage X 4.6 it's easy to see why it's R/C's toughest, best equipped and most durable monster truck on the market!

TWO ORIGINAL AWESOME OFF-ROADERS — REDEFINED FOR 2013!



2013 1/5 Baja 5B 2.0 Buggy RTR



- Revised 23cc Fuelie engine
- High-flow muffler
- Unique Baja monocoque chassis
- Dash-style front tires and Dirt Buster rear tires with beadlock wheels
- Adjustable rear wing
- Durable front and rear skid plates
- Complete set of ball bearings

HPID86** 110190 Baja 5B 2.0 1/5 Scale Buggy RTR
 Length: 32 in (817 mm)
 Width: Front 18 in (460 mm); Rear 19 in (480 mm)
 Height: 10 in (255 mm)
 Wheelbase: 22.4 in (570 mm)
 Ride Height: 2.99 in (76 mm)
 Weight (w/o fuel): 21.3 lb (9.6 kg)

The 1/5 scale Baja 5SC and 5B RTRs are as big and bold as ever, with a new matte finish for a more distinctive look and lots of exciting upgrades.

Both vehicles share these performance pluses:

- HPI 2.4GHz radio system with reliable electronic failsafe
- 8000 rpm clutch
- VVC heavy-duty shocks
- TorxT27 engine screws
- Long travel suspensions
- Viscous torque differential
- Dual vented disc brakes
- Sealed radio box
- High-capacity 700cc fuel tank with clunk

2013 1/5 Baja 5SC Short Course Truck RTR



- 26cc Fuelie engine
- Super heavy-duty driveshaft and diff shaft
- HB Rodeo high-traction tires on 10-spoke wheels
- Front and rear short course bumpers
- Heavy-duty rear hubs allow for toe-in adjustment
- Water-resistant servos
- Metal transmission gears
- Full-length dirt guards

HPID85** 109964 Baja 5SC 1/5 Scale Short Course Truck RTR
 Length: 35 in (900 mm)
 Width: Front 17.3 in (440 mm); Rear 18 in (460 mm)
 Height: 12.6 in (320 mm)
 Front Track: 14.5 in (370 mm)
 Rear Track: 15 in (380 mm)
 Wheelbase: 22.4 in (570 mm)
 Weight (w/o fuel): 27.9 lb (12.6 kg)

Long story short...

To really experience the thrills of real off-roading, you have to go **BIG** — as in the 1/5 scale Baja 5B buggy and 5SC short course truck!

NEWPRODUCT

SET SAIL WITH A UNIQUE RACING YACHT DESIGN!

Volans 1M Racing Trimaran



TTRB5556 Volans 1-Meter Trimaran Racing Yacht Kit

Length: 39.4 in (1000 mm)
Beam: 21.6 in (549 mm)
Height: 59.25 in (1505 mm)
Sail Area: 514.6 in² (33.2 dm²)
Weight: 7.5 lb (3.4 kg)



- Factory-painted, pre-assembled ABS hulls
- Tear-resistant racing sails
- Rigid extruded aluminum booms and mast
- Easy-to-remove side hulls
- Display stand included

From the Experts:

With a main hull flanked by two side hulls, the Volans 1-meter Trimaran offers excellent straight-line performance and stability, surprisingly fast on the water and nearly unsinkable. The extruded aluminum booms and mast are lightweight and rigid, just like the quality ABS blow-molded hulls.

Long story short...

The Volans 1-Meter Trimaran adds a South Pacific feel to yacht racing!



THE FUN, EASY WAY TO CAPTAIN A SEAPLANE

tidewater™



- Durable, factory-built AeroCell airframe that assembles without glue
- Specially contoured fuselage, plug-in floats, and water rudder provide excellent handling while taxiing on the water
- The motor and propeller are positioned above the wing to avoid water contact and help ensure pilot safety during hand launches
- Both the RTF and Tx-R Prime versions include a powerful brushless motor and ESC, four micro servos and an SLT receiver compatible with AnyLink

FLZA3330 Tidewater EP RTF
 FLZA3332 Tidewater EPTx-R Prime
 Wingspan: 41.5 in (1055 mm)
 Length: 36 in (915 mm)
 Weight: 32 oz (905 g)

Flyzone
 how high will you soar™

From the Experts:

Make the Tidewater your first — or next — float plane! It assembles quickly without glue, and boosts your confidence with predictable flight and smooth water handling. The brushless power system provides plenty of muscle for easy takeoffs and exciting sport aerobatics. Choose the RTF version for all-you-need convenience...or opt for the Tx-R Prime to use your own favorite transmitter, battery and charger.

Long story short...

The Tidewater is the ideal sport plane for introducing you to the thrills of water takeoffs and landings!



NEW PRODUCT

FAST FORWARD INTO FLIGHT!



eraze™

- Assembles in less than a minute
- Compact size makes it ideal for grab-and-go flying
- Brushless motor, ESC, TR624 SLT receiver, and 2 micro servos installed
- Flies well on economical 600-640mAh 2S 7.4V or 3S 11.1V LiPo battery packs
- RTF version comes with everything you need, including a Tactic 4-channel 2.4GHz radio system
- Tx-R Prime version requires a 4-channel radio with SLT, or 4-channel radio compatible with AnyLink, 7.4V or 11.1V 600mAh LiPo battery and LiPo charger

FLZA3340 Erazze EP Flying Wing RTF
 FLZA3342 Erazze EP Flying Wing Tx-R Prime
Wingspan: 18.1 in (460 mm)
Length: 19.3 in (489 mm)
RTF Weight: 6.2 oz (176 g)
Tx-R Weight: 6.2-6.8 oz (176-193 g)

Flyzone
 how high will you soar™

From the Experts:

Just snap the Erazze's magnetic tail fin in place, install your flight pack and you're ready for takeoff! Finger holes in the AeroCell foam fuselage provide a good grip for hand launches — and once you hit the sticks the brushless power system accelerates you to full throttle in a heartbeat. Choose the all-inclusive RTF or go with the Tx-R Prime version that you can fly with your transmitter!

Long story short...

**See what the future of flight holds
 with the Erazze EP Flying Wing!**

PACK MORE POWER INTO YOUR RIDE!



35C LiPo batteries



- 35C LiPo batteries feature higher discharge ratings for even more power
- True-rated Onyx LiPo packs deliver consistent power, charge after charge
- DTXC1964 and DTXC1965 have impact- and puncture-resistant hard ABS cases; all others come with smaller, weight-reducing soft cases
- All are available with your choice of Deans® or Traxxas® connectors

Deans® and Ultra Plug® are registered trademarks of W.S. Deans Co. U.S. Patent No. 5,533,915.

- DTXC1964 Onyx LiPo 7.4V 5000mAh 35C Hard Case Deans
- DTXC1965 Onyx LiPo 7.4V 5000mAh 35C Hard Case Traxxas
- DTXC1966 Onyx LiPo 11.1V 5000mAh 35C Traxxas
- DTXC1967 Onyx LiPo 11.1V 5000mAh 35C Deans
- DTXC1970 Onyx LiPo 7.4V 5700mAh 35C Traxxas
- DTXC1978 Onyx LiPo 11.1V 6400mAh 35C Deans
- DTXC1979 Onyx LiPo 11.1V 6400mAh 35C Traxxas
- DTXC1982 Onyx LiPo 7.4V 8000mAh 35C Deans
- DTXC1983 Onyx LiPo 7.4V 8000mAh 35C Traxxas
- DTXC1995 Onyx LiPo 11.1V 8000mAh 35C Deans
- DTXC1997 Onyx LiPo 11.1V 8000mAh 35C Traxxas

From the Experts:

These Onyx LiPo packs with 35C discharge ratings meet the needs of R/Cers wanting more power from their packs. You can trust the stated capacity to deliver the performance you expect — just as you can count on Onyx batteries to be an excellent value!

Long story short...

Whether you're competing in racing events or upgrading your Ready-To-Run vehicle, these 35C LiPo packs from Onyx are ideal!



NEW PRODUCT

EQUIPPING THE TITAN X50E WITH THE PERFECT POWER PLANT

Titan X50EF Flybarless 600-Size Electric Heli w/Motor



Now available
with Thunder
Tiger's 50/06-50H
Brushless Motor!

Everything you could want in a high-performance machine is here!

- Precision CNC-machined aluminum flybarless rotor head
- One-piece carbon main frames with a slim profile
- Lightweight, rigid one-piece metal main rotor hub
- Metal tail blade grips, with dual radial bearings and one thrust bearing
- Large battery bay that accommodates 8-12S LiPo batteries
- Torque tube-driven tail
- Titanium turnbuckle pitch linkages
- V2 carbon fiber main blades included and tail blades included

TTRE0055 Titan X50EF Flybarless 600-Size Electric Heli w/Motor

Main Rotor Diameter: 53 in (1345 mm)

Main Rotor Blade Length: 23.6 in (600 mm)

Tail Rotor Blade Length: 3.74 in (95 mm)

Length: 47.25 in (1200 mm)

Weight w/o batteries: 6.06 lb (2748 g)



THUNDER TIGER®

From the Experts:

With flybarless technology, a 120° CCPM control system, torque tube-driven tail rotor and so much more, the Titan X50E has the ability to make 3D look effortless. Now comes the X50EF, which adds the convenience of an included brushless motor to all of its other advantages!

Long story short...

With the Titan X50EF there's no need to look for that perfect motor — the brushless 50/06-50H motor is included!

DELIVERING BIG-TIME MONSTER TRUCK PERFORMANCE

MT4-G3 1/8 Scale Brushless 4WD 2.4GHz Monster Truck RTR

www.gpdealer.com



- Equipped with the Ace Cougar GP3 2.4GHz radio system featuring the latest in spread spectrum technology
- A 2000kV brushless motor and 150A ESC deliver mega muscle for extreme off-roading
- The same transmission as the nitro ST-1, with steel gears and hardened steel rings in all three diffs
- Race-proven suspension with aluminum shock bodies and towers, along with multiple fine-tuning options
- Completely assembled and ready for you to add batteries and start taming the toughest terrain

TTRD8361 MT4-G3 1/8 Scale Brushless 4WD 2.4GHz Monster Truck RTR-Red
 TTRD8362 MT4-G3 1/8 Scale Brushless 4WD 2.4GHz Monster Truck RTR-Blue
Length: 20.9 in (532 mm)
Width: 17 in (434 mm)
Height: 9.5 in (240 mm)
Wheelbase: 14 in (360 mm)
Weight: 9.2 lb (4180 g)



From the Experts:

Wild wheelies, big air off the jumps, back flips...these are just some of the fun things you can do with the MT4-G3 monster truck! It borrows lots of components from the nitro ST-1, so you know it can stand up to rugged off-road action and come back for more. And this brushless electric powerhouse comes ready right out of the box!

Long story short...

The beefed-up MT4-G3 is everything a big, bold monster truck should be!



NEWPRODUCT

w.gpdealer.com

TRY TO TAME THIS BRUSHLESS BEAST!

Ready-To-Run 1/8 Scale 4WD EP 2.4GHz Monster Truck

60+ mph
speeds right
out of the box!



- Integrated chassis with inner hexagon cell construction (HCC) for added rigidity
- Powerful IBL-40/20 brushless motor and heavy-duty BLC-150C ESC
- Newly designed Ace Cougar GP3 2.4GHz radio system
- Waterproof digital all metal-gear steering servo
- One-piece battery compartment that can hold 6S LiPo batteries or two 7-cell NiMH packs
- High performance shocks deliver consistent damping; the linkages have been moved inboard for protection from rocks, dirt and weather

TTRD8111 1/8 eMTA 4WD EP 2.4GHz Monster Truck RTR-Red
TTRD8112 1/8 eMTA 4WD EP 2.4GHz Monster Truck RTR-Yellow
TTRD8113 1/8 eMTA 4WD EP 2.4GHz Monster Truck RTR-Green
Length: 24.4 in (620 mm)
Width: 17.5 in (445 mm)
Height: 8.6 in (220 mm)
Wheelbase: 14.5 in (370 mm)
Weight: 10.6 lb (4820 g)

e-MTA

From the Experts:

If unstoppable, wheel-lifting torque and lightning-quick acceleration are what you're after, then this is your truck! The eMTA can take on any terrain, combining brushless brute force and superior handling. With its big 1/8 scale dimensions the eMTA will dominate the conditions AND the competition!

Long story short...

The eMTA is destined to leave all other electric off-roaders in its dust!



TWO NEW 21-SIZE POWERHOUSES PACKED WITH WINNING PERFORMANCE!

21XZ-B Speed Spec II

- Even more of the factory-installed upgrades that top drivers demand!
- A lighter crankshaft, with DLC coating, Tungsten weight and silicone-filled intake passage
- Modified piston and con rod that reduces overall weight
- Newly designed outer head with V-shaped fins for lower CG and more efficient cooling
- Dual-adjustable 21J carburetor for smoother acceleration and better fuel mileage
- A 6.5 mm restrictor is installed; 6 mm and 7 mm restrictors are included



OSMG2052 21XZ-B Speed Spec

Displacement: 0.213 cu in (3.49 cc)
Bore: 0.641 in (16.27 mm)
Stroke: 0.661 in (16.8 mm)
Practical RPM Range: 4,000-42,000
Output: 2.65 ps @ 34,000 rpm
Weight: 12.52 oz (355 g)

21XR-B

- A high-performance engine that's affordably priced!
- Single-adjustable 22B carb features easy tuning
- Shares the same basic layout as the 21XZ-B, and can be upgraded with 21XZ-B parts



OSMG2055 21XR-B

Displacement: 0.213 cu in (3.49 cc)
Bore: 0.641 in (16.27 mm)
Stroke: 0.661 in (16.8 mm)
Practical RPM Range: 4,000-40,000
Output: 2.45 ps @ 33,000 rpm
Weight: 13.05 oz (370 g)

From the Experts:

O.S. continues to improve and expand their .21-size racing engine line — and the proof is in the 21XZ-B Speed Spec II and 21XR-B. The 21XZ-B Speed Spec II is leaner and meaner, with a high-performance carb. The 21XR-B offers many competitive features at an economical price for club racers.

Long story short...

From weekend warrior to World Champion, O.S.'s 21XZ-B Speed Spec II and 21XR-B engines are the engines of choice!

O.S. ENGINE
UNEQUALLED QUALITY PRECISION & PERFORMANCE

NEW PRODUCT

SERVOS ON THE CUTTING EDGE OF PERFORMANCE

SBus2 Servos

S.BUS™



FUTM0125 S3172SV Glider HV SBus2 Programmable MG Servo
Torque @ 7.4V: 57 oz-in (4.1 kg-cm)
Speed @ 7.4V: 0.23 sec/60°
Dimensions: 1-3/16 x 7/16 x 1-1/8 in (30 x 11 x 29 mm)
Weight: 0.7 oz (20 g)



FUTM0135 BLS171SV SBus2 HV HT Programmable MG Servo
Torque @ 7.4V: 164 oz-in (11.8 kg-cm)
Speed @ 7.4V: 0.10 sec/60°
Dimensions: 1-9/16 x 13/16 x 1-3/8 in (40 x 20 x 35 mm)
Weight: 1.7 oz (48 g)



FUTM0136 BLS172SV SBus2 HV UHT Programmable MG MC Servo
Torque @ 7.4V: 514 oz-in (37 kg-cm)
Speed @ 7.4V: 0.11 sec/60°
Dimensions: 1-9/16 x 13/16 x 1-1/2 in (41 x 21 x 38 mm)
Weight: 2.6 oz (74 g)



FUTM0138 BLS174SV SBus2 HV HT Programmable Aileron Servo
Torque @ 7.4V: 133 oz-in (9.6 kg-cm)
Speed @ 7.4V: 0.09 sec/60°
Dimensions: 1-7/8 x 1-1/16 x 1 in (48 x 27 x 25 mm)
Weight: 1.9 oz (53 g)



FUTM0139 BLS175SV SBus2 HV HT Programmable MG MC Servo
Torque @ 7.4V: 292 oz-in (21 kg-cm)
Speed @ 7.4V: 0.12 sec/60°
Dimensions: 1-9/16 x 13/16 x 1-7/16 in (40 x 20 x 37 mm)
Weight: 2.3 oz (66 g)



FUTM0141 BLS177SV SBus2 HV UHT Programmable MG MC Servo
Torque @ 7.4V: 514 oz-in (37 kg-cm)
Speed @ 7.4V: 0.11 sec/60°
Dimensions: 1-9/16 x 13/16 x 1-1/2 in (41 x 21 x 38 mm)
Weight: 2.8 oz (79 g)



FUTM0145 BLS272SV SBus2 HV HS Programmable MG Servo
Torque @ 7.4V: 167 oz-in (12 kg-cm)
Speed @ 7.4V: 0.08 sec/60°
Dimensions: 1-9/16 x 13/16 x 1-7/16 in (40 x 20 x 37 mm)
Weight: 2.1 oz (60 g)

- All of these servos can handle up to 2S LiPo power.
- Programmable and compatible with both S.Bus and S.Bus2
- BLS servos with brushless motors feature incredible holding power and 5x longer life over standard servos.
- S3172SV's is ideal for gliders and smaller aircraft
- Dual ball bearing-supported

From the Experts:

Today's pilot demands more from his components, and these SBus2 servos deliver! They can handle up to 2S LiPo. Choose from a wide array of SBus2 servos, including some with Ultra High-Torque ratings of 514 oz-in!

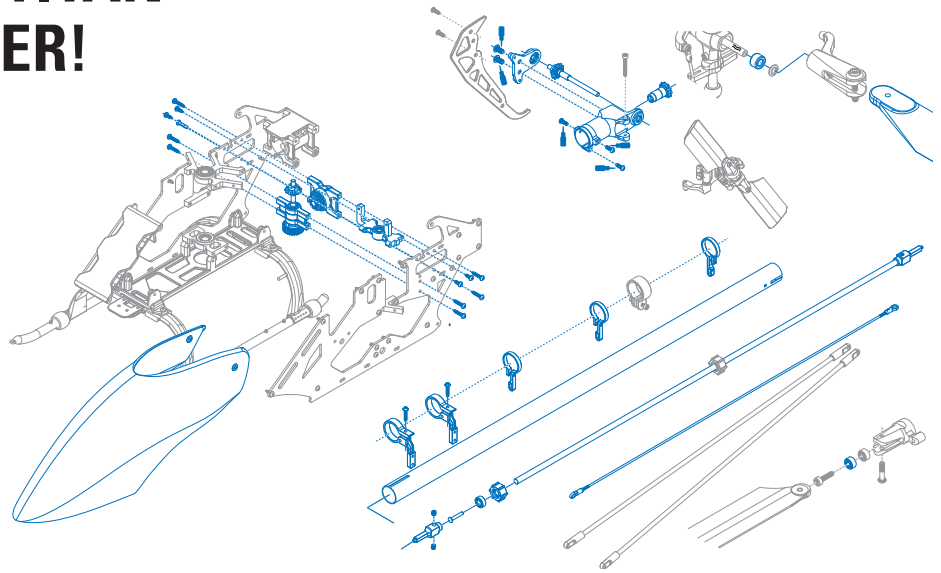
Long story short...

Unleash your flight system's full potential with these innovative SBus2 servos!

STRETCH YOUR MINI TITAN V2 INTO A 3D MONSTER!

E360 Conversion Kits

- Run longer main rotor blades and a 4S pack for increased performance
- Basic Kit includes a larger pre-printed PVC canopy, longer tail boom, torque tube, tail pushrod and reinforced servo tray
- Standard Kit includes Basic Kit components as well as gear sets and other parts to convert from a belt-driven tail rotor to a torque tube driven tail rotor
- Complete Kit comes with all of the above, along with a 3000kV brushless motor and ESC to handle the 4S LiPo battery's power
- Plus kit includes all components of the Basic and Standard kits and a pair of 360mm carbon fiber main blades



TTRE0035 E360 Conversion Kit Basic
 TTRE0036 E360 Conversion Kit Standard
 TTRE0037 E360 Conversion Kit Plus
 TTRE0038 E360 Conversion Kit Complete



Long story short...

By just upgrading a few essential parts, the E360 Conversion Kit boosts the size and improves the performance of the Mini Titan V2 heli!

INCREDIBLE PERFORMANCE WITH V 1.3X SOFTWARE!

CGY750 3-Axis Flybarless Gyro & Governor

- New Version 1.3x software allows higher cyclic gains, better piro compensation and dramatic improvement in rate control and consistency between stationary and fast forward flight
- Collective to cyclic interaction is virtually eliminated
- Phase sensor support
- Simplified setup
- Spend less time fine-tuning



FUTM0835 CGY750 3-Axis Flybarless Gyro & Governor

Long story short...

The CYG750's "off-the-charts" fast response time has made it the gyro choice of the world's top heli pilots!



NEW PRODUCT

A BOAT THAT BREAKS ALL THE RULES!

OUTLAW JR. OBL



- Precision control courtesy of a state-of-the-art Ace Cougar GP3 2.4GHz radio system
- ABS blow-molded deep vee hull that's preassembled and pre-painted
- Powered by a water-cooled OBL29/20-15M brushless motor and BLC-40M ESC
- On-board gear is easily accessed under a quick-release hatches
- Comes with a wooden display stand

TTRB5023 Outlaw Jr. Brushless 2.4GHz RTR-Yellow

TTRB5024 Outlaw Jr. Brushless 2.4GHz RTR-Green

Length: 29 in (740 mm)

Beam: 8.3 in (210 mm)

Weight: 2.3 lb (1050 g)



THUNDER TIGER®



Long story short...

Even though it's an RTR, the Outlaw Jr. boasts quality components — and it doesn't require a large body of water to deliver thrilling performance!

EASY, ELECTRIC FLIGHT WITH THE FOCUS ON FUN!

Razor RR Airplane

- Built with Elapor foam and carbon-reinforced wings and tail
- Wing is removable for easy transport
- Powered by a high-performance brushless motor
- Large fuselage hatch allows for easy access
- Full aerobatic capability
- Receiver Ready — comes with brushless motor, ESC, prop, flight battery and servos



MPUA2680 Razor RR Airplane

Wingspan: 24.4 in (620 mm)

Wing Loading: 10.8 oz/ft² (33 g/dm²)

Length: 23.4 in (594.3 mm)

Weight: 10.6 oz (300.5 g)

MULTIPLEX®



Long story short...

Enjoy daring aerobatics with the agile, compact Receiver-Ready Razor!

GET EMPOWERED WITH THE VERSATILE, AFFORDABLE EPOWERBOX 30!

ePowerBox 30 30A AC Power Supply

- Ideal for aircraft and surface models alike
- Delivers the right amount of juice to Hitec H4, X4, X4 Eighty or any other DC charger
- Input voltage range of 100VAC to 240VAC, with adjustable output of 12-18 VDC that provides up to 30 amps of current
- Backlit LCD screen displays both voltage and amperage output
- Dual 4mm output jacks

HRCP4174 ePowerBox 30 30A AC Power Supply



Long story short...

The ePowerBox 30 is sure to become a staple on your R/C workbench!

GET HITEC CONVENIENCE, RELIABILITY AND VALUE WITH THE X1 MF!

X1 MF 80-Watt Multi-Function AC/DC Charger

- Very portable and economically priced
- Built-in motor RPM and servo tester
- Upgradeable firmware keeps you up to date as battery technologies evolve
- Rotary dial design for intuitive menu navigation and ease of operation
- Universal balancing board supports most batteries on the market

HRCP4176 X1 MF 80-Watt Multi-Function AC/DC Charger



Long story short...

The X1 MF is THE charger for beginner and sport level pilots and racers!

Just Released

Castle™ Creations Talon 90 ESC 90A 25.2V

Enough power to keep even the hungriest servos happy!

- Ideal for extreme 500- and 550-class helis and sport (6S) 600 setups
- Can also be installed on fixed wing aerobats up to 10 lb (4.5 kg) and scale ships up to 20 lb (9.07 kg)
- BEC offers 20 amps of peak power and 9 amps of continuous power



CSEM9700
Talon 90 ESC
90A 25.2V

Futaba® R7003SB Bi-Directional FASSTest Receiver

The compact choice in a telemetry-compatible receiver!

- Two S.Bus ports, S.Bus2 ports, up to three PWM ports
- High voltage capable (2S LiPo)
- Small and lightweight with proven FASST full-range performance
- 11 different programmable port configurations including assignable PWM outputs
- Compatible with an impressive array of Futaba telemetry sensors

FUTL7672
R7003SB Bi-Directional
FASSTest Receiver



Pro-Line® Ion 2.2" MC Off-Road Buggy Tires

Already a ROAR National Champion!

- Delivers unmatched gripping power on indoor clay tracks
- Molecular structure-inspired tread design
- Cut foam included
- Side tread that flows organically out of the sidewall for increased drivability



PROC2217
Ion 2.2" Off-Road
Buggy Tires (2) Rear



PROC2317
Ion 2.2" Off-Road
Buggy Tires (2) Front

Pro-Line® Big Blox 1/8 Scale Off-Road Buggy Tires

Introducing the ultimate long-wear tire!

- Large center lugs last through long A-mains, even with super-soft compounds
- Bow-tie shaped tread offer superior traction
- High-density, reusable closed-cell inserts included
- Available mounted on lightweight Velocity white wheels

PROC4832 Big Blox M3 Off-Road 1/8 Buggy Tires Mounted
PROC4833 Big Blox M4 Off-Road 1/8 Buggy Tires Mounted



PROC4803
Big Blox M4 Off-Road
1/8 Buggy Tires F/R (2)

Pro-Line® Masher 2.8" All Terrain Truck Tires

Ideal for Traxxas® Stampede® or Monster Jam replica trucks!

- Chevron-type tread design digs deep into the toughest terrain
- The hook-shaped side tread craters dirt for unparalleled traction
- Available mounted on aggressive-looking six-spoke wheels made of durable nylon

PROC9212 Masher 2.8" All Terrain Tires Mounted-Black Wheels
PROC9213 Masher 2.8" All Terrain Tires Mounted-Black Wheels Rear



PROC9200
Masher 2.8" All Terrain
Truck Tires F/R (2)

ENJOY FULL-THROTTLE BOAT RACING ACTION!

Spring is almost here...purchase your favorite AquaCraft racing boat NOW!

Very few thrills in R/C compare with skimming across the water with a sleek, electric-powered off-shore racer — so treat yourself to the excitement of piloting a wet and wild model from AquaCraft!

All of these boats are big on performance; you just need to decide which one suits your style. Powerful brushless motors generate blazing speeds, and top-of-the-line 2.4GHz radio systems deliver control that's precise and dependable. Plus, they all arrive factory-assembled and ready for fast-paced action right out of the box. If you like the streamlined look of a FE mono hull, there's the big, bold Revolt 30. Catamaran choices include the ever-popular Wildcat and eye-catching Motley Crew. And the SuperVee 27 is a big hit with deep-vee fans. Just select your favorite AquaCraft model and experience the ultimate in water-racing fun!

Look for these awesome AquaCraft Models on display:

- AQUB1810 Wildcat EP Brushless Catamaran 2.4GHz
- AQUB2100 Motley Crew Brushless FE Catamaran 2.4GHz
- AQUB23** SuperVee 27 Brushless FE Boat 2.4GHz
- AQUB24** Revolt 30 FE Mono 2.4GHz

WOW! Get up to \$25 in Free Merchandise!

Now through April 30, 2013 when you purchase a select AquaCraft racing boat you'll be eligible to receive a certificate worth up to \$25 in quality merchandise from over 30 top brands! Visit aquacraftmodels.com for complete details!

Visit aquacraftmodels.com and:

- Learn more about AquaCraft boat models
- Watch videos
- Follow AquaCraft on Facebook and YouTube
- Sign up for informative E-Bulletins

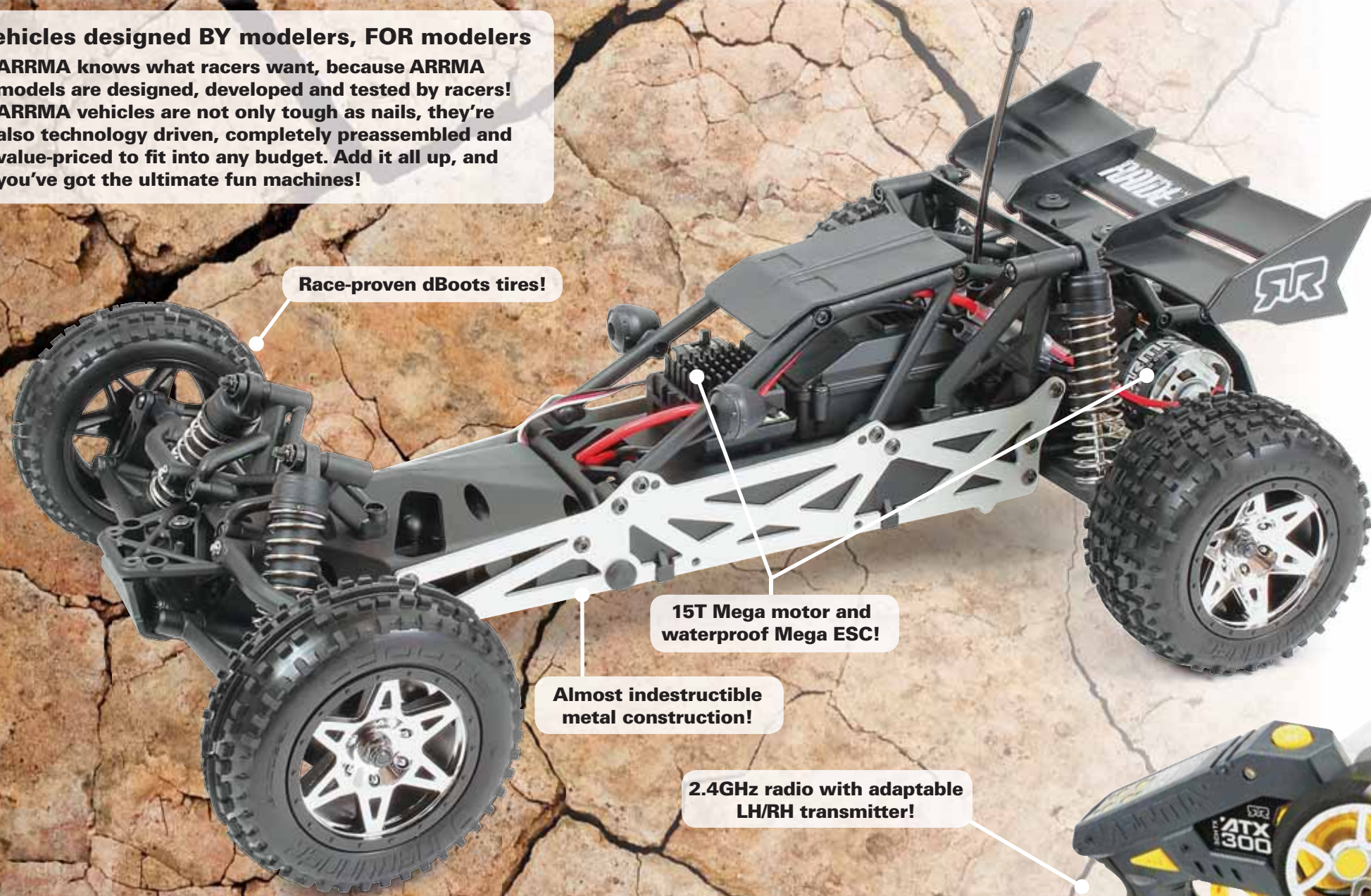


See the Revolt 30 in action!



TAKE A LOOK AT WHAT MAKES ARRMA RIGHT FOR YOU!

Vehicles designed BY modelers, FOR modelers
 ARRMA knows what racers want, because ARRMA models are designed, developed and tested by racers! ARRMA vehicles are not only tough as nails, they're also technology driven, completely preassembled and value-priced to fit into any budget. Add it all up, and you've got the ultimate fun machines!



Race-proven dBoots tires!

15T Mega motor and waterproof Mega ESC!

Almost indestructible metal construction!

2.4GHz radio with adaptable LH/RH transmitter!



The included Power Package adds even more convenience!

- 110V AC wall charger
- Onyx 6-cell 1500mAh NiMH battery
- 8 "AA" alkaline batteries

A \$24.99 retail value!



Set it up the way you want!



Right out of the box!



Complete with battery, charger and "AA"s!



Interference-free control!



No building required — start racing now!



Run anywhere — anytime!



Satisfaction guaranteed!



Off-Road Buggy
 ARAD01GG Green
 ARAD01RR Red
 ARAD01YY Yellow
 Advertised Price \$159.99



Racing Buggy
 ARAD02BB Blue
 ARAD02GG Green
 ARAD02RR Red
 Advertised Price \$159.99



Stadium Truck
 ARAD03BB Blue
 ARAD03NN Orange
 ARAD03RR Red
 Advertised Price \$169.98



Monster Truck
 ARAD04BB Blue
 ARAD04GG Green
 ARAD04RR Red
 Advertised Price \$199.98



Short Course Truck
 ARAD05BB Blue
 ARAD05PP Purple
 ARAD05RR Red
 Advertised Price \$179.97



Desert Truck
 ARAD06GG Green
 ARAD06NN Orange
 ARAD06PP Purple
 Advertised Price \$179.97



ARRMA
 WE ARE RADIO CONTROL
 arrma-rc.com

3 STEPS TO RACING SUCCESS

- 1 Buy a DEX210 RTR
- 2 Open the box
- 3 Start racing!

DEX210

Just because the DEX210 RTR requires no building doesn't mean it can't go against kits and win — because it can, and does. All of the technology and innovation that have made Team Durango kits the kings of R/C racing is here in this Ready-To-Run platform: an injection-molded composite chassis, patented gearbox design, oil-filled gear diff, Big Bore oil shocks, ROAR-legal electric power, competition-level electronics and much more. All professionally preassembled and topped off with a stylish cab-forward body. With the DEX210 RTR, taking the checkered flag is as easy as 1-2-3!



The DEX210 is powered by a Speed Passion World Champions sensored brushless system featuring a 13.5T motor and blinky mode ESC.



TDRD01** DEX210 1/10 Scale 2WD EP Buggy RTR
 Length: 15.5 in (394 mm)
 Width: 9.8 in (250 mm)
 Wheelbase: 10-9-11.2 in (277-285 mm)
 Approx. RTR Weight: 55.2 oz (1567 g)

TURN HERE FOR GENERAL HOBBY PRODUCTS

SWITCH TO A HIGHER GEAR!

IN THE NEW REVELL/GEARZ MODEL KIT CHAMPIONSHIPS!

Great Prizes!

- An inscribed Revell/GearZ trophy
- Up to 12 brand new Revell model kits
- \$50 gift card for ModelCars.com
- Licensed GearZ apparel
- A sweet jacket embroidered with the contest logo
- Free products from Badger Airbrush
- Revell/GearZ licensed t-shirts, hats and more!

Winners will be announced on Revell.com and staceydavid.com August 5!

More Ways To Win:

Junior Open Class:

- Open for all qualified kits for entrants ages 15 and under
- Box stock entries only (100% original parts): 2 Winners!

Modern Muscle Cars, WWII Aircraft and Trucks Categories Will Each Have:

- Box Stock Division (100% original parts)
- NOVICE: 1 winner (fewer than 10 models built in the past 3 years)
- ADVANCED: 1 winner (10 or more models built in the past 3 years)

Unlimited Division
(50% of original parts must be used)

- NOVICE: 1 winner (fewer than 10 models built in the past 3 years)
- ADVANCED: 1 winner (10 or more models built in the past 3 years)

Watch GearZ
Check your local listings for times!
SPEED Channel



Look for this display!



Even more eligible models:



Cars...

- | | |
|----------|------------------------------|
| RMXS4220 | '09 Dodge Challenger SRT8 |
| RMXS4243 | Dodge Viper SRT10 ACR |
| RMXS2097 | '07 Ford Shelby GT500 |
| RMXS4212 | '06 Ford Shelby GT-H |
| RMXS4938 | '10 Ford Shelby GT500 |
| RMXS4216 | Chevrolet® Corvette® ZR-1™ |
| RMXS4239 | '12 Chevrolet® Camaro SS 2n1 |

Planes...

- | | |
|----------|-----------------------|
| RMXS5209 | P-40B Tiger Shark |
| RMXS5239 | Spitfire MKII |
| RMXS5248 | F4U Corsair |
| RMXS5255 | P-39 Airacobra |
| RMXS5256 | P-51 B/C Mustang |
| RMXS5262 | F6F-5 Hellcat |
| RMXS5600 | B17-G Flying Fortress |
| RMXS7546 | Black Widow |

And Trucks!

- | | |
|----------|--------------------------------|
| RMXS1506 | Peterbilt 359 Conv |
| RMXS4914 | Ed Roth Ford F100 |
| RMXS7208 | '37 Ford Pickup Street Rod 2n1 |
| RMXS7202 | '41 Chevy Pickup 2n1 |
| RMXS7200 | '41 Chevy Silverado Pickup |



- | | |
|----------|----------------------|
| MONS4010 | Dodge Viper RT/10 |
| MONS4273 | '02 Camaro 2n1 |
| MONS4017 | Dodge Ram VTS Pickup |

Submit your entry by May 15, 2013



Stacey David asks, "What are YOU workin' on?"®

When he's not building a full-size vehicle on the set of his hit SPEED Channel series, GearZ host and executive producer Stacey David can be found working on a model car. It's a way to relax while maintaining his creative edge. Stacey has been a hobbyist as long or longer than he's been fixing and modifying real cars. Starting his 7th season of GearZ in 2012, David previously hosted and produced another popular automotive series on Spike TV for eight years.

Now, Stacey David is teaming up with Revell for this year's Model Car Championship! Stacey, along with a full panel of expert judges will evaluate each entry base on its creativity, use of the kit, adherence to the theme, fit/finish and use of color. The entry with the most points in each category will win.



Get complete contest details at revell.com

SPRING HAS SPRUNG!

Explore the great outdoors with Estes rockets



All include:

- Plastic or laser-cut wood fins
- Decals
- Recovery parachute

All require:

- Engines
- Launch pad
- Launch controller
- Igniters
- Recovery wadding
- Tools
- White or yellow glue
- Finishing supplies

Ages 10 and up. Adult supervision recommended for modelers under 12.

Easy to Assemble **E2X**

No paint or special tools are required. Parts are painted and easy to assemble. Just glue together, apply decals and attach the recovery system.

Skill Level 1

Requires moderate gluing, painting and sanding. Assembly takes up to a few hours.

Skill Level 2

Requires gluing, painting and sanding. Assembly can take up to a day.

Red Flare™

Full of fiery ferocity
Max. Altitude: 1,000 ft (305 m)
Height: 24.4 in (62 cm)
ESTT1954
 Requires 3/16" (5 mm) Maxi™ Launch Rod (sold separately)

Easy to Assemble **E2X**



Sky Shark™

Hotter than a hammerhead
Max. Altitude: 550 ft (168 m)
Height: 15.1 in (38.4 cm)
ESTT2438

Easy to Assemble **E2X**



Top Shot™

3+ feet of fun-fueled flight
Max. Altitude: 1,150 ft (351 m)
Height: 37 in (94 cm)
ESTT1955
 Requires 3/16" (5 mm) Maxi™ Launch Rod (sold separately)

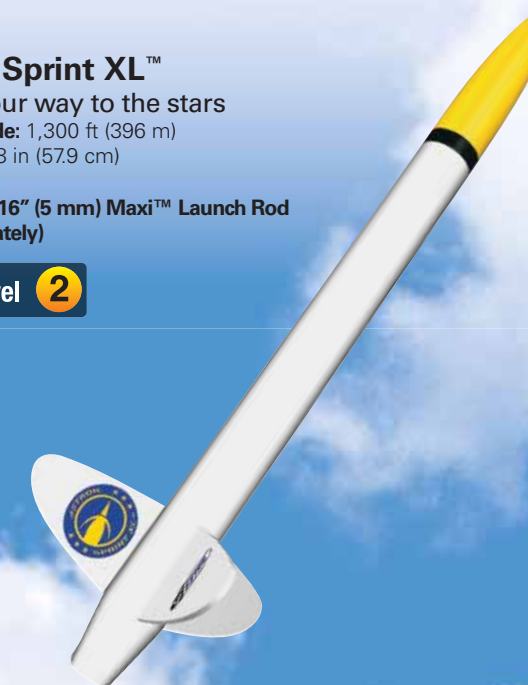
Easy to Assemble **E2X**



Astron Sprint XL™

Sprint your way to the stars
Max. Altitude: 1,300 ft (396 m)
Height: 22.8 in (57.9 cm)
ESTT7224
 Requires 3/16" (5 mm) Maxi™ Launch Rod (sold separately)

Skill Level 2



Mini Fat Boy™

Powerfully, pleasantly plump
Max. Altitude: 250 ft (76 m)
Height: 8.5 in (21.6 cm)
ESTT2442

Skill Level 1



From the Experts:

Fast assembly and eye-catching looks make these rockets must-haves!

Long story short...

Estes has the right stuff to make your spring more spectacular!



www.revell.com

1/25 SCALE 2001 CHRYSLER® PT CRUISER®

Personal Transport for the new millennium

Here's an idea; every time you see a PT Cruiser, punch someone. It's kinda like a "slug bug," but it's a cruiser bruiser instead, get it? Of course, they produced well over a million of these cars in their ten-year run, so that's a lot of prospective bruising, not to mention the potential for lawsuits. So... how about you just build this model instead? It's an intricate kit that features full interior detail, front and rear seats, a screw-on chassis and peel-and-stick decals.

RMXS1979 Total Parts: 37 Skill Level: 1 Length: 6.8 in (173 mm)



1/48 SCALE F-104G STARFIGHTER RCAF

Royal Canadian Lawn Darts

Lockheed® designed the F-104G Starfighter to be a simple, fast and powerful fighter — and it was exactly that. For years, its performance record was legendary. It set world speed and altitude records and was a very effective counter to the MiG variants of the day. Unfortunately, its accident record was also legendary, leading to nicknames like the "Lawn Dart." Nevertheless, it was a popular fighter with air forces all over the world. This **kit features** a RCAF F-104G with Gatling cannon detail, air brakes, decals and wing-mounted Sidewinder missiles.

RMXS5324 Total Parts: 63 Skill Level: 2 Length: 14.8 in (375.9 mm)



MONOGRAM® PLASTIC MODELS



1/25 SCALE S'COOL BUS

The baddest bus ever built

Eager to learn? Well then, how would you like to ride to school at over 190 mph (300 km/h)? You could in a dual blown fueller, with a trick chassis and the ultimate funny car body — a chopped fiberglass school bus with big spoilers built into the front fenders. It's got to be the baddest hot rod ever. **Kit features** original issue box art, tilt-up funny car body, bright plated parts, printed, tinted window sheet, and colorful decals.

MONS4080 Total Parts: 100 Skill Level: 2 Length: 8 in (203 mm)



1/25 SCALE '41 WILLYS PICKUP

The original race truck

The Willys Corporation helped produce over half a million Jeeps® during World War II. That experience helped them design the Willys Pickup, a one-ton or half-ton four-wheel-drive truck. After the war, the Willys Pickup became popular with farmers and hunters and eventually with drag racers. It was perfectly sized for "Gasser" drag racing. This **kit features** a detailed blown big block engine, "Gasser" drivetrain, opening doors with twin bucket seats, separate pickup bed with tonneau cover and colorful decals with hot rod and custom graphics.

MONS4058 Total Parts: 98 Skill Level: 3 Length: 6.1 in (155.6 mm)





1/144 SCALE USA/USSR MISSILE SET

Have a nice day :)

At the height of the Cold War, both the United States and the USSR possessed over 30,000 nuclear weapons. Among these weapons were thousands of missiles capable of being fired to targets half way around the globe. No matter whether they are launched from silos, submarines or strategic bombers, the sum effect of these nuclear stockpiles is the total annihilation of all life in both countries. This **kit features** nine U.S. missiles and eleven Soviet missiles with a display base and accurate decals.

MONS7860 Total Parts: 45 Skill Level: 2 Length: 12.8 in (325 mm)



REVELL OF GERMANY® PLASTIC MODELS



1/144 SCALE LOCKHEED-MARTIN® F-16C® FIGHTING FALCON®

Really, really don't mess with Texas

And especially don't mess with the Texas Air National Guard. They fly the F-16C, a versatile air superiority fighter that can launch nearly every type of airborne ordnance in the U.S. inventory. Combine that with the Falcon's exceptional fly-by-wire maneuverability and its ability to fly at twice the speed of sound and you have one bird you really never want to mess with. This **kit features** completely new tooling, two HARM missiles, two Bombs, AIM-120 missiles and decals for the Texas ANG 65th anniversary paint scheme.

RVLS3992 Total Parts: 70 Skill Level: 3 Wingspan: 2.6 in. (66 mm)



1/32 SCALE EUROCOPTER® EC135

The quietest heli in its class

Eurocopter introduced the EC135 to the U.S. at 1995's Heli-Expo in Las Vegas. Its spacious interior and enclosed low-noise tail rotor have made it a favorite of air rescue and police units in the U.S. and Europe alike. The EC135 is sometimes used for business and offshore flights as well. The airframe and rotor blades are constructed with lightweight composite materials, which make the EC135 one of today's most cost-effective, low-maintenance helis. **Kit features** multiple decal marking options.

RVLS4659 Total Parts: 180 Skill Level: 4 Length: 12.7 in (323 mm)



1/32 SCALE MESSERSCHMITT BF 109 G-6

Nazi Germany's field modifiable fighter

Designed by Messerschmitt and Lusser in 1934, the Bf 109 was one of the first modern aircraft of the era. Features such as a liquid-cooled V-12 engine, a closed canopy and retractable landing gear made the Bf 109 a huge improvement over WWI fighters. The "G-6" variant, which appeared late in WWII, had a more powerful engine with superchargers and also came with many field adjustment kits. These kits allowed the G-6 to be fielded with extra guns, rockets, bombs or extra fuel tanks, making it a highly versatile fighter.

RVLS4665 Total Parts: 170 Skill Level: 5 Wingspan: 12.2 in (311 mm)



www.revell.com

1/144 SCALE AIRBUS® A320 AIR BERLIN®

From Germany to the world

Air Berlin is the second largest airline in Germany. Its 135 aircraft fly to 163 destinations in 39 countries. The Airbus A320 makes up a quarter of the Air Berlin fleet. These powerful passenger liners can carry up to 180 passengers for flights of up to 3,700 miles (5,900 km). This **kit features** a structured fuselage and wings with recessed panel joints, a detailed undercarriage which can be modeled extended or retracted, detailed engines, antennas, vents and full decals with numerous registration number options.

RVLS4861 Total Parts: 60 Skill Level: 3 Wingspan: 9.3 in (235 mm)



1/72 SCALE F/A-18F SUPER HORNET

VFA-103 "Jolly Rogers"

The Jolly Rogers are famous for their history and the skull and crossbones liveries that their F/A-18F Super Hornets bear. The squadron operates from carriers, striking at enemies all around the globe. Their F/A-18F Super Hornets are advanced aircraft, capable of delivering strategic munitions to land, sea and air targets. This **kit features** a detailed cockpit, ejection seats and undercarriage. Includes ECM pods, two HARM, two AIM-9x and two AIM-120C missiles, plus two MK83 bombs, three external fuel tanks, a detailed access ladder and decals for VFA-103 and VFA-11.

RVLS4864 Total Parts: 97 Skill Level: 4 Wingspan: 7.4 in (187 mm)



1/48 SCALE P-47N THUNDERBOLT

Juggernaut "Jugs"

Throughout WWII, the range disparity of bombers and their escort fighters caused problems and casualties for the USAAF. The "N" versions of the P-47 Thunderbolt were designed to fly up to 2,000 miles (3,200 km), far enough to escort B-29 Superfortresses to targets in Japan. The "Jugs" were effective in both air-to-air and air-to-ground roles because of their eight .50-caliber machine guns, and their ability to carry rockets and bombs. This **kit features** detailed parts, two bombs, ten rockets and decals for two USAAF planes.

RVLS4867 Total Parts: 106 Skill Level: 4 Wingspan: 10.6 in (270 mm)



1/1200 SCALE USS NIMITZ (CVN-68)

The backbone of the American Navy

At over 1,000 ft (333 m) long, the USS Nimitz is a floating city. Over 5,000 men and women serve aboard the Nimitz and it carries a complement of 90 aircraft. She can deploy those birds nearly anywhere in the world. This **kit features** a detailed hull with many structures, authentic power plant, deck elevators, detailed bridge superstructure, radar equipment, sixteen F/A-18 Super Hornets, four EA-6B Prowlers, four E-2C Hawkeyes and eight MH-60 S Sea Hawks plus flight deck vehicles, a display stand and detailed flight deck and insignia decals.

RVLS5814 Total Parts: 99 Skill Level: 3 Length: 11 in (277 mm)





1/288 SCALE BOEING 737-800 "EASY KIT"

Build the newest passenger plane from Boeing

Airlines the world over are switching to the Boeing 737-800 because it offers many improvements over the 737-400. Increased seating, 10% better fuel economy, 10% better air speed and 10% better range all combine to make it one of the best birds in the air. Most of the performance increases are due to the introduction of winglets— devices which lower drag on the wing tip. This easy to assemble **kit features** detailed structures and decals to mark your plane as part of the Air Berlin passenger liner service.

RVLS6647 Total Parts: 40 Skill Level: 2 Wingspan: 4.8 in (123 mm)



1/100 SCALE KAMOV-HOKUM KA-50 "EASY KIT"

Russia's "Black Shark"

The Russian Ka-50 is the only single-seat attack helicopter in the world. Its combination of light weight, dual rotors and excellent navigational electronics make it fast and efficient. At the same time, its wide array of weapons make it ideal for ground support and it can be used for anti-air missions. After the collapse of the Soviet Union, the production run for the Ka-50 was dropped from hundreds to under ten. Despite their limited numbers, the copter was used to great effect against Chechen Rebels in 2001.

RVLS6648 Total Parts: 30 Skill Level: 2 Length: 5.7 in (145 mm)



1/100 SCALE F-15 EAGLE "EASY KIT"

The score is 100 to 0 and climbing

At 35 years old, the F-15 Eagle is one of the most venerable jet fighters in the USAF and one of the most venerated. Amongst the list of the fighter's accolades is the fact that, over its entire operational history, no F-15 has ever been lost to enemy action. In fact the F-15 has over 100 kills for zero losses to aerial action. More than any other single factor, near-perfect maneuverability accounts for the Eagle's supremacy. No respectable collection of fighter aircraft should be without this peerless fighter plane.

RVLS6649 Total Parts: 17 Skill Level: 2 Wingspan: 5.2 in (131 mm)



1/24 SCALE MINI COOPER 998 MK. I

Small on the outside, roomy on the inside

In 1956, England began rationing gasoline in response to the Suez Crisis. In response, the British Motor Corporation introduced a small fuel-efficient car— the Mini—in 1959. At 10 feet (3 m) long and 4.6 feet (1.3 m) tall, the Mini was tiny. However, by inverting the engine set-up and angling the seats, the Mini was able to offer a full six foot (1.8 m) passenger cabin. **Kit features** fine surface details, separate movable hood, detailed 4-cylinder engine, separate exhaust assembly, detailed dashboard and authentic decals.

RVLS7092 Total Parts: 126 Skill Level: 3 Length: 5 in (127 mm)

1/12 SCALE YAMAHA® YZR500 1988 WGP500 CHAMPION

Come out smoking

For nearly thirty years, the YZR500 garnered top spots in the Motorcycle Grand Prix. Despite extremely stiff competition at multiple events all over the world, its finishes were consistently in the top two, with nine first place finishes. One of those first place wins came in 1988, when rider Eddie Lawson won seven of the fifteen Grand Prix Championships for the Marlboro®-Yamaha team. This **kit features** decals for two team "Marlboro Yamaha" 1988 WGP500 vehicles: Champion: No.3 Rider: Eddie Lawson and 7th place: No.12 Rider Didier de Radigues.

21503 HSGS1503 Total Parts: 165 Skill Level: 3



1/200 SCALE SOLASEED AIR B737-400 COMBO Successor of Skynet Asia Airways

Solaseed Air operates ten of their intricately decorated B737-400s in passenger flights across much of southern Japan. Each one of these Boeing® aircraft can carry up to 150 passengers at a time on flights between multiple airfields on Japan's southern island (Kyushu), Tokyo and Okinawa. Solaseed operates a total of fourteen Boeing passenger aircraft and has plans to expand its service to other parts of Asia. This limited edition kit combo features decal marking options for Solaseed Air Code: JA737H and Skynet Asia Airways Code: JA737G and JA737F.

10694 (Limited Edition) HSGS1694(Two Kits) Total Parts: 28 x 2 Skill Level: 3



**2 kits
1 box**

1/200 SCALE JAL® MD-90 The last McDonnell Douglas® Jet Liner

Japan Air Lines McDonnell Douglas MD-90s were some of the last passenger air liners built by the McDonnell Douglas Corporation before its merger with Boeing®. These impressive aircraft are over 150 feet (46 m) long and can carry up to 172 passengers 2,400 miles (3,860 km). Japan Air Lines used the MD-90 primarily for short-range national passenger flights. The MD-90 will soon be discontinued from service with Japan Air Lines. This limited edition **kit features** decal markings for the farewell flight of Japan Air Lines' MD-90 Code: JA8070.

10695 (Limited Edition) HSGS1695 Total Parts: 30 Skill Level: 3



1/200 SCALE PEACH® AVIATION AIRBUS® A320 Build a new liner for the first anniversary

Peach® is a low-cost airline that offered its first passenger flight on March 1, 2012. The airline's six aircraft fly between several destinations in Japan, China, South Korea and Taiwan. In the extremely competitive world of Japanese aviation, Peach stands out with its distinctive pink-painted planes and dedicated flight staff. Craft this kit of a Peach Aviation Airbus to celebrate one year of reaching for the sky. This **kit features** decals for four jetliners, codes: JA801P, JA802P, JA803P and JA804P.

10741 HSGS1741 Total Parts: 43 Skill Level: 3





1/72 SCALE F-117A NIGHTHAWK "FAREWELL" Saying goodbye to the "Wobblin' Goblin"

From its first flight in 1983 to its farewell ceremony in 2008, the F-117A Nighthawk was one of America's most intriguing aircraft. The Nighthawk's many-faceted shape deflects radar waves, allowing it to reach its targets undetected. This stealth technology allowed the F-117 to conduct missions critical to the resolution of many conflicts. At the storied aircraft's retirement ceremony, ground crews decorated several Nighthawks with American flags to commemorate their service. This limited edition **kit features** decals for four different aircraft from the retirement ceremony at Holloman AFB in April 2008.

02011 (Limited Edition) HSGS2011 Total Parts: 74 Skill Level: 3



1/72 SCALE KAWASAKI KI-48-II TYPE 99 LIGHT BOMBER "LILY" Bombers of the 75th Flight Regiment

Like most Imperial Japanese Army Air Service planes, the Ki-48 was a light, fast and maneuverable aircraft that focused on armament rather than armor. The type proved to be extremely effective dive bombers in operations in the Philippines, Malaya and Burma. These bombers had a crew of four and could carry up to 1,700 lbs (800 kg) of bombs over extremely long distances. Late in the war, Ki-48s were used in numerous Kamikaze attacks. This limited edition **kit features** photo-etched dive breaks and decals for three I.J.A.A.F. aircraft.

02012 (Limited Edition) HSGS2012 Total Parts: 86 Skill Level: 3

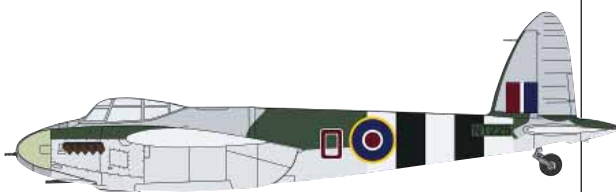


1/72 SCALE F-86D SABRE DOG J.A.S.D.F. COMBO All weather antagonists

A hulking variant of the standard F-86, the F-86D was larger, faster and far more deadly than the original. These interceptor-style fighters carried swarms of 2.75 in (70 mm) rockets for use against enemy bombers. The addition of a radar suite allowed the Sabre Dog to target opponents in low-visibility conditions. For many years after the end of World War II, the Sabre Dog was the primary fighter of the Japan Air Self Defense Forces. This limited edition **kit features** two detailed kits with decal options for five J.A.S.D.F. fighters.

02018 (Limited Edition) HSGS2018 (Two Kits) Total Parts: 69 x 2 Skill Level: 3

**2 kits
1 box**



1/72 SCALE MOSQUITO FB MK XVIII "ANTI-SHIP ATTACKER" Smashing subs into shrapnel

To help harass Nazi shipping, Great Britain equipped the Mosquito, one of the fastest pre-jet engine aircraft in the world, with an auto-loading 57 mm anti-tank gun. The "balsa bomber" excelled in this role just as it had in every other task given to it. The high-caliber, high-velocity gun was perfect for punching through the deck armor of U-boats and surface ships, allowing Mosquito fighter-bomber squadrons to inflict serious damage on the Kriegsmarine. This **kit features** new nose and 57 mm gun pieces, plus decal markings for two late-war Mosquitos.

02024 (Limited Edition) HSGS2024 (Two Kits) Total Parts: 68 Skill Level: 3

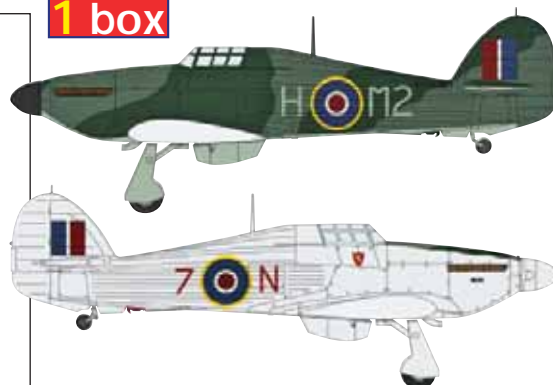
1/72 SCALE SEA HURRICANE MK IB/MK IIC COMBO (TWO KITS)

A storm to halt the tide

Hawker Hurricanes bore the brunt of the Axis assault in Europe. Their carrier-borne cousins, the Sea Hurricanes, brought the battle to every corner of the globe. Although many detractors considered it to be obsolete, the Hurricane proved them wrong. In lopsided engagements all across the world, the Hurricane's reliability and ease of repair helped tip the scales back in the Allies' favor. With all four cannons blazing, the Hurricanes bought time for the Allies. This limited edition **kit features** an arresting hook, guide rollers and three decal options.

02025 (Limited Edition) HSGS2025 (Two Kits) Total Parts: 39 x 2 Skill Level: 3

**2 kits
1 box**



1/72 SCALE SBD-3/4/5 DAUNTLESS COMBO

Daunting and denting the IJN

Douglas Dauntless Dive Bombers were among the most critical aircraft of the Pacific Theatre during WWII. Despite being outgunned and slower than Japanese Zeros, the Dauntless' early war contribution was crucial. These aircraft sank four Japanese aircraft carriers at Midway and numerous other surface ships throughout the war. The accuracy, range and power of the various Dauntless models enabled the USN to break the frequently superior IJN forces and, eventually, win the war. This limited edition **kit features** two highly detailed models in one box with three decal marking options.

02026 (Limited Edition) HSGS2026 (Two Kits) Total Parts: 49 + 53 Skill Level: 3

**2 kits
1 box**



1/72 SCALE AD-6/7 SKYRAIDER COMBO

Paragons of piston power

Sheer reliability and massive ordnance capacity kept the piston-powered Skyraiders flying well into the jet-power era. The AD-6 and AD-7 were the most powerful versions, able to carry a centerline bomb of up to 3,500 lb (1,600 kg) in addition to their normal bomb load. Millions of pounds of ordnance were dropped by the Skyraiders against ground targets in Korea and Vietnam. The Skyraider retired from American service in 1972. This limited edition kit combo features decals for U.S. Navy VA-95 Code: NG506 and VA-15 Code: T517.

02027 (Limited Edition) HSGS2027 (Two Kits) Total Parts: 92 x 2 Skill Level: 3

**2 kits
1 box**



1/72 SCALE F-15I STRIKE EAGLE "RA'AM 69TH SQUADRON"

Bringing the hammer down

From its earliest days flying B-17s in 1948, the 69th Squadron has been one of Israel's chief strategic air wings. The nickname of the 69th is "Hammers" and though their aircraft have changed, their objective hasn't: hammer the enemy. The Strike Eagle "Ra'ams" that the squadron operates are American-built all-weather strike fighters capable of delivering an astonishing array of cannon fire, missiles and bombs to targets over an 800 mile (1300 km) combat radius. This limited edition **kit features** new pylon parts, plus decals for two Israel 69th Squadron aircraft.

02028 (Limited Edition) HSGS2028 Total Parts: 154 Skill Level: 3





1/72 SCALE SHIN MEIWA PS-1 SEAPLANE

Scouring the seas for submarines

The Shin Meiwa PS-1 is famous for its unique design and innovative features. Developed as a flying boat for anti-submarine warfare and air-sea rescue missions, some versions of the PS-1 even had beaching gear on board! The successor of the Shin Meiwa, the Shin Maywa US-2 is still in use as a rescue craft by the Japanese Marine Self Defense Forces. This limited edition kit is being re-released for a limited time. The **kit features** detailed parts, full landing gear and decals for two seaplanes.

04008-3 (Limited Edition) HSGS4009

Skill level 3



1/72 SCALE "ACE COMBAT®" ASF-X SHINDEN II

Build Kei Nagase's famous fighter

Designed by "Macross" creator Shouji Kawamori, the ASF-X Shinden II is a fictional futuristic jet that appears in downloadable content for the best-selling video game "Ace Combat: Assault Horizon." This limited edition **kit features** new tooling, a choice of "Normal," "SSC (Stealth Super Cruise)" and "STOVL (Short Take-off and Vertical Landing)" modes; two wingtip options, two engine nozzle options, movable canard parts, movable tail wing parts, six air-to-air missiles, four rocket pods, clear display stand parts and marking options for Kei Nagase—a recurring character from many Ace games.

64702 (Limited Edition) HSGS4702 Total Parts: 115 Skill Level: 3 Length: 10.7 in. (273 mm)



1/12 SCALE SCIENCE ROOM DESK AND CHAIRS

I love the smell of formaldehyde in the morning

It smells like learning! Use this set to bring a little class to any scene. It is perfect for setting any scene that needs some seating, especially school or laboratory settings. This kit snaps together to make perfect 1/12 scale furniture with no need for painting, gluing or detailing. The easy set up ensures that this kit won't just sit around. You can quickly and easily set up seating for your setting! **Kit features** snap together parts for one desk and four chairs in white, gray, black and brown.

62004 HSGS6204 Skill Level: 3



1/48 SCALE F-15E STRIKE EAGLE "TIGER MEET 2005"

Designed for superior aerial combat!

The Strike Eagles of the 391st Fighter Squadron are some of the most advanced aircraft in the world. When these fighters are not at war, they frequently fly in NATO's "Tiger Meets," gatherings at which fighter squadrons engage in competitive, realistic combat simulations. For these competitions, the F-15Es are often painted in extravagant tiger stripe motifs. This limited edition **kit features** a highly detailed cockpit, pilot and landing gear, plus conformal fuel tanks, a navigation pod and decals for U.S.A.F. codes MO250 and SJ 4FW.

07318 (Limited Edition) HSGS7318 Total Parts: 274 Skill Level: 3

1/48 SCALE F/A-18C HORNET

Fighters of the "World Famous Golden Dragons"

VFA-192, the Golden Dragons, has flown F/A-18s in support of both Iraq Wars and the war in Afghanistan. The "C" model's AN/AAR-50 thermal imaging navigation set, NITE Hawk targeting pod, and Doppler ground mapping radar are invaluable in finding and marking insurgents. Shortly after identification is complete, the Hornet's vast weapons array is capable of making short work of any threat. This limited edition **kit features** decals for U.S. Navy VFA-192 "Golden Dragons" USS George Washington Code: NF300 2009 and USS John C. Stennis Code: NG400 2011.

07326 (Limited Edition) HSGS7326 Total Parts: 227 Skill Level: 3



1/48 SCALE TA-4F SKYHAWK

Training Top Guns

Skyhawks are battle-proven light bombers whose speed and power has made them popular with air forces around the world. TA-4F models are twin-seat trainers the U.S. used to turn promising recruits into pilots. Many of those pilots then went on to fly the Skyhawk against ground targets in Vietnam. The Skyhawk has proven so reliable that, sixty years after its introduction, it is still in service with modern air forces. This limited edition **kit features** decals for U.S. Marine MAG-11 H&MS-11 Code: TM00 Da Nang 1969.

07327 (Limited Edition) HSGS7327 Total Parts: 145 Skill Level: 3



1/48 SCALE NAKAJIMA B5N1 TYPE 97 CARRIER ATTACK BOMBER (KATE)

Japan's legendary torpedo bomber

The Nakajima B5N, introduced in 1937, was a nimble high-performance aircraft. It was first used during the Sino-Japanese War as a land-based bomber, then expanded into carrier-based missions during WWII. It sank the Arizona and inflicted critical damage on several other crafts at Pearl Harbor. Its Type 91 "Thunder Fish" torpedoes also sank the Yorktown, Lexington and Hornet aircraft carriers. This limited edition **kit features** three marking options: I.J.N. 12th N.F.G. Codes: S-391(1937) and 3-356 Hokoku 268, plus Carrier Kaga Code: Ni-301.

07328 (Limited Edition) HSGS7328 Total Parts: 115 Skill Level: 3



1/32 SCALE MESSERSCHMITT BF 109G-2

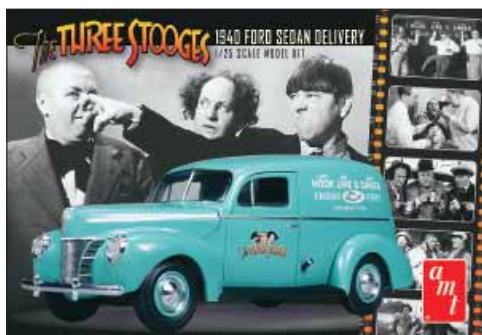
"FINNISH AIR FORCE"

Fighting over the frozen fields of Finland

In the Winter War of 1939-1940, the Soviet Union invaded Finland without provocation. That invasion caused Finland to ally itself with Germany against Russia for much of WWII. German-built Messerschmitt Bf 109s gave the vastly outnumbered Finnish Air Forces a fighting chance against the Soviet Air Forces. Finnish forces shot down eight Soviet planes for every one they lost; these air victories helped the Finns maintain their independence after the end of WWII. This limited edition **kit features** decals for three F.A.F. fighters codes: MT-222, MT-213 and MT-225.

08230 (Limited Edition) HSGS8230 Total Parts: 110 Skill Level: 3





AMT® 1/25 Scale Three Stooges® 1940 Ford® Sedan Delivery

Fresh canned laughs delivered straight to your door

For nearly one-hundred years, the Three Stooges have been bringing laughter to America. Their combination of physical, slapstick comedy and incredible hijinks have left critics' noses in the air and audiences rolling on the floor. Many of the Stooges' most memorable short films involved the troublesome trio starting doomed businesses. You can decorate this 1940 Ford Sedan with the logo for some of those businesses, like the "Hook, Line, and Sinkers" fresh fish corp. This **kit features** many custom car parts and full color Three Stooges decals.

AMT791/12 AMTS0791 Skill Level: 2



AMT® 1/25 Scale 1967 Shelby® GT-350®

A classic "Cobra" with commanding control

The first Shelby GT-350s were made for drivers who favored performance over perks. As the car's popularity soared, creature comforts became more common. No matter what, though, power never took a back seat. The 1967 model sported a K-code 289 "HiPo" engine with a "Cobra" aluminum hi-rise – which delivered 306 hp at 6,000 rpm. An optional Paxton supercharger boosted horsepower to 390 hp! **Kit features** modern tooling, superior details, white plastic molding, realistic and authentic engine, interior and chassis parts, decals with multiple body stripe options and retro-style packaging.

AMT800 AMTS0800 Skill Level 2



Moebius® Models 1/8 Scale Creature from the Black Lagoon

Get the "Gill-Man," before he gets you!

"Creature from the Black Lagoon" first splashed onto movie screens in the spring of 1954. The Gill-Man was the last of the classic Universal® monsters; today, he still has a fervent fan following. Universal pulled out all the stops for "Creature," filming it in eye-popping 3D. The film was so successful, it spawned two sequels: 1955's "Revenge of the Creature" and "The Creature Walks Among Us" in 1956. **Kit features** the Creature clutching a beautiful victim in his arms, as well as a detailed display base. Requires paint and glue.

925 MOES0925



Moebius® 1/4105 Scale Battlestar Galactica® Pegasus

Commanded by the able Admiral Cain

For most of the series the Battlestar Galactica is alone in the universe, but for a brief period the Pegasus accompanies it. The Pegasus is far more advanced and much better equipped than the Galactica and the two ships join forces for mutual protection. There's only one problem, the Cylons are still out there, and two ships are no better at ending their quest to destroy the human race than one. This **kit features** a detailed Battlestar Pegasus; it includes a display stand, decals and a printed backdrop.

931 MOES0931 Length: 16 in (406 mm) Skill Level: 3



Moebius® 1/25 Scale International® ProStar® Semi Tractor

The star of international freight hauling

With all of its outstanding features it's no surprise that the ProStar is one of the best-selling Class Eight trucks in North America. Some of its perks over other semis include reduced wind resistance, decreased cabin noise and increased storage capacity. Plus, its new MaxxForce® Advanced emissions system reduces harmful nitrous oxide emissions by rerouting cooled fumes back into the engine. Slide one of these precision-molded beauties together today! This **kit features** a super-detailed MaxxForce 15 engine, detailed chassis, detailed interior and precision tooled parts.

1301 MOES1301 Total Parts: 270 Skill Level: 3 Length: 12.8 in (325 mm)

Just Released

BrainStorm™ DC Sport Kite Assortment

12 fantastic kites, 1 amazing value

- Each 60" (18.3 m) dual-control sport kite features durable nylon construction, a fiberglass airframe and a ripstop nylon sail
- Set includes 3 kites each in blue, red, teal and purple
- Wind range: 7-18 mph (11-29 km/h). Ages 10 and up



**80840A
BNSF0840**
BrainStorm™ DC
Sport Kite Assortment

BrainStorm™ Wind Diamond 30" Nylon Kites

Celebrate the sky with these awesome kites!

- Each 30" (0.8 m) kite features durable nylon construction, fiberglass airframe, Skytails®, winder line and Quick Clip®
- Wind range: 5-18 mph (11-29 km/h). Ages 8 and up



BNSF0301-0304
BrainStorm™ Wind
Diamond 30" Nylon
Kites

BNSF0301 70301 Infinity
BNSF0302 70302 Peace

BNSF0303 70303 Spiral
BNSF0304 70304 Stripes

BrainStorm™ 32" Nylon Butterfly Kites

Flutter and fly with your favorite butterfly!

- Each 32" (0.8 m) kite features durable nylon construction, fiberglass airframe and Skytails®
- Wind range: 5-15 mph (8-24 km/h). Ages 8 and up



BNSF0501-0504
BrainStorm™ 32"
Nylon Butterfly Kites

BNSF0501 70501 Karner Blue
BNSF0502 70502 Monarch

BNSF0503 70503 Indian Red
BNSF0504 70504 Swallowtail

BrainStorm™ Skypals Disney® Themed Nylon Kites

Soar with your favorite Disney® characters!

- Each kite features durable nylon construction, fiberglass airframe and Skytails®
- Wind range: 5-15 mph (8-24 km/h). Ages 8 and up



BNSF0601-0604
BrainStorm™ Skypals
Disney® Themed Nylon
Kites

BNSF0601 70601 Buzz Lightyear
BNSF0602 70602 Mickey Mouse

BNSF0603 70603 Minnie Mouse
BNSF0604 70604 Tinker Bell

BrainStorm™ WNS Nylon Rainforest Kites

Fly a piece of the rainforest wherever you go

- Each kite features durable nylon construction and fiberglass airframe, sizes vary
- Wind range: 5-15 mph (8-24 km/h). Ages 8 and up



BNSF0701-0704
BrainStorm™ WNS
Nylon Rainforest Kites

BNSF0701 90701 Dart Frog
BNSF0702 70702 Macaw

BNSF0703 70703 Mandrill
BNSF0704 70704 Iguana



BNSF0801-0804
BrainStorm™ WNS
Nylon SkyZoo Kites

BrainStorm™ WNS Nylon SkyZoo Kites

Fly the kings of the forest!

- Each kite features durable nylon construction and fiberglass airframe, sizes vary
- Wind range: 5-15 mph (8-24 km/h). Ages 8 and up

BNSF0801	70801	Elephant	BNSF0803	70803	Lion
BNSF0802	70802	Tiger	BNSF0804	70804	Panda



BNSF0901-0904
BrainStorm™ WNS
Nylon SeaLife Kites

BrainStorm™ WNS Nylon SeaLife Kites

Unite the sea and sky!

- Each kite features durable nylon construction and fiberglass airframe, sizes vary
- Wind range: 5-15 mph (8-24 km/h). Ages 8 and up

BNSF0901	70901	Sea Turtle	BNSF0903	70903	Otter
BNSF0902	70902	Great White Shark	BNSF0904	70904	Octopus



BNSF1101-1104
BrainStorm™ WNS
Nylon Fantasy Fliers
3D Kites

BrainStorm™ WNS Nylon Fantasy Fliers 3D Kites

Set your fantasies free!

- Each kite features durable nylon construction and fiberglass airframe, sizes vary
- Wind range: 5-15 mph (8-24 km/h). Ages 8 and up

BNSF1101	71101	Dragon	BNSF1103	71103	Griffin
BNSF1102	71102	Fairy	BNSF1104	71104	Mermaid



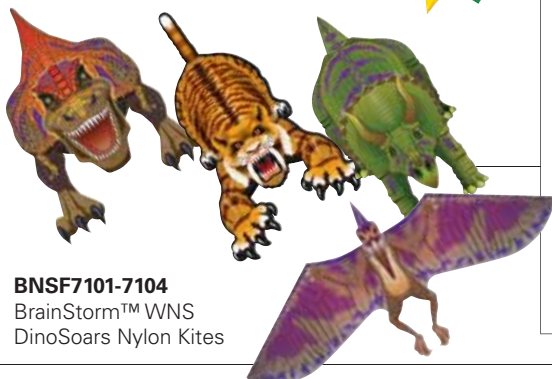
BNSF2065, 2072, 2101, 2201
BrainStorm™ WNS
Supersize 3D Nylon Kites

BrainStorm™ WNS Supersize 3D Nylon Kites

Supersize your fun!

- Each kite features durable nylon construction and fiberglass airframe, sizes vary
- Wind range: 5-15 mph (8-24 km/h). Ages 8 and up

BNSF2065	82065	P-51	BNSF2101	72101	Dragon
BNSF2072	82072	Red Baron	BNSF2201	72201	StarBox
BNSF2076	82076	Space Shuttle			



BNSF7101-7104
BrainStorm™ WNS
DinoSoars Nylon Kites

BrainStorm™ WNS DinoSoars Nylon Kites

Fun you can really sink your teeth into!

- Each kite features durable nylon construction and fiberglass airframe, sizes vary
- Wind range: 5-15 mph (8-24 km/h). Ages 8 and up

BNSF7101	71001	T-Rex	BNSF7103	71003	Pterodactyl
BNSF7102	71002	Sabre Tooth	BNSF7104	71004	Triceratops

Just Released

BrainStorm® 80" Blue XL DC Sport Kite

Dual-control design, for exciting stunts, loops and dives!

- High-performance kite features a super-strong fiberglass airframe
- Handle and heavy-duty flight line included
- Wingspan: 80 in (203 cm). Wind speed: 7-20 mph (11-32 km/h)
- Ages 10 and up



**81925
BNSF1925**
BrainStorm® 80" Blue
XL DC Sport Kite

Skydog Kites Diamond Stunter Sport Kite

Designed for dazzling stunts!

- Ready-to-fly dual-line kite is made from durable ripstop nylon
- Features a heavy-duty fiberglass frame and flight line
- Sail dimensions: 33" x 30" (84 cm x 76 cm)
- Wind speed: 7-25 mph (11-40 km/h)
- Assorted Colors



**20398
SKKF0398**
Skydog Kites Diamond
Stunter Sport Kite
(Asstd Colors)

Skydog Kites Learn to Fly "Flames" Sport Kite

Hot-blooded fun for everyone!

- A deep sail profile and durable, 0.2" (4 mm) fiberglass frame makes it easy to fly
- Features a ripstop nylon sail, braided polyester flight line and dual handles
- Wind speed: 4-18 mph (6-29 km/h). Measures 48" x 23" (122 cm x 58.4 cm)



**20403
SKKF0403**
Skydog Kites Learn to
Fly "Flames" Sport Kite

Skydog Kites 48" Rainbow Best Flier Kite

Easy to assemble, built to last!

- Great for beginners
- Durable ripstop nylon construction
- Tough fiberglass frame
- 48" x 84" (122 cm x 213 cm)



**11110
SKKF1110**
Skydog Kites 48"
Rainbow Best Flier Kite

Skydog Kites 48" "Flames" Best Flier Kite

A "best bet" for beginners, enjoyable for everyone!

- Single-line kite is easy to prepare, launch and fly
- Features ripstop nylon construction, a fiberglass frame and 300' (91 m) of line
- Packaged in a resealable plastic carrying case
- Dimensions: 48" x 84" (122 cm x 213 cm)
- Wind speed: 5-25 mph (8-40 km/h)



**11136
SKKF1136**
Skydog Kites 48"
"Flames" Best
Flier Kite



PAINTS & PAINT SETS

First-class quality, four-star results

The perfect pairing for your Stacey David GearZ® contest kit!

- The hobby industry's most-recognized, most-trusted brand
- Chosen by modelers for over 80 years
- Countless colors are available to please any palette
- Paints are precisely matched for lasting looks
- Convenient Paint Sets and Kits include brushes and other essentials



Auto Detail Enamel Paint Set
TESR3520 9120



Model Car Spray Paint Set
TESR9220 9220T



Military Flat Enamel Paint Kit
TESR3531 9131XT

- | | | |
|----------|-------|---|
| TESR3519 | 9119 | Custom-Colors Model Car Enamel Paint Kit |
| TESR3521 | 9121 | Aircraft Finishing Enamel Paint Set |
| TESR3561 | 9161 | Plastic Model Finishing Set (Enamel) (27 pc.) |
| TESR9100 | 9100T | Auto Detailing Acrylic Paint Set |
| TESR9101 | 9101T | Military Acrylic Paint Set |
| TESR9149 | 9149 | Military Enamel Paint Set |
| TESR9163 | 9163 | Plastic Model Finishing Set (Acrylic) |
| TESR9177 | 9177 | Plastic Model Finishing Set (Enamel) (36 pc.) |
| TESR9185 | 9185 | Model Car Acrylic Paint Set |
| TESR9188 | 9188 | Aircraft Acrylic Finishing Kit |
| TESR9197 | 9197T | Auto & Truck Acrylic Paint Set |
| TESR9216 | 9216 | Military Aircraft Spray Set |

TURN HERE FOR RADIO CONTROL PRODUCTS