

GREAT NEWS[®]

GREAT PLANES MODEL DISTRIBUTORS

RADIO CONTROL • JUNE 2011



CHRISTEN EAGLE 46



Pages 2-3

PLUS:

**Lanier RC™ by Great Planes®
Stinger™ II**

Pages 4 & 5

Associated SC10RS

Page 12

New HPI Vehicles

Pages 14 & 15

**America's Best
R/C Sale!**

Pages 23-27



GREAT NEWS[®]

GREAT PLANES MODEL DISTRIBUTORS

GENERAL HOBBY • JUNE 2011



**2010
Mustang GT Coupe**

Page 7



PLUS:

New road race sets from SCX[®]
Pages 12 & 13

KidKraft wooden trains
Page 14

Estes[®] + Summer = Family Fun
Pages 16 & 17



Pages 2 & 3

AMERICA'S AIR SHOW FAVORITE — AS A FAST-ASSEMBLING ARF!



- Bright MonoKote® colors recreate the trademark "Eagle" trim scheme
- Performs well with a glow engine or brushless outrunner motor
- Innovative interplane struts eliminate brackets and tiny screws, making assembly and teardown faster and easier
- Other touches for getting you in the air faster include one-piece wings with pre-hinged ailerons and a painted fiberglass cowl and wheel pants

The Christen Eagle name is used by Hobbico®, Inc. under license from Aviat Aircraft, Inc.

CHRISTEN EAGLE 46



The generous hardware package includes extras such as a painted pilot bust, spinner and wheels.

From the Experts:

Like the hot rod, the Christen Eagle is an all-American creation. The original homebuilt biplane executed unlimited-class maneuvers with ease, and this ARF is designed to deliver the same adrenaline-charged aerobatics. Not only will you enjoy the assembly ease that Great Planes is famous for, you'll also appreciate this plane's scale details — right down to the eye-catching trim scheme, which comes already professionally applied.

Long story short...

Whether you're talking about appearance or performance, there's only one way to describe the Christen Eagle...and that's sensational! It arrives with every colorful "feather" in place, ready to snap, tumble or rocket straight up at a moment's notice!



GPMA1431 Christen Eagle .46-.72/EP ARF
 Wingspan: 42.5 in (1080 mm)
 Wing Area: 441 in² (28.4 dm²)
 Weight: 5.75-6.25 lb (2610-2830 g)
 Wing Loading: 30-33 oz/ft² (92-101 g/dm²)
 Length: 39.5 in (1005 mm)



NEW PRODUCT

A CLASSIC DESIGN, WITH MODERN FEATURES



- A two-piece wing with joiner tube speeds and simplifies assembly
- The built-up balsa airframe is factory-covered top-to-bottom in MonoKote® film
- Other quality details include a painted fiberglass cowl and wheel pants
- A thick, airfoiled wing and large control surfaces make for a wide flight envelope
- Comes with a pilot figure



Servos on each wing panel maximize mixing options, while simplifying set-up.



GPMA1010 Stinger II .46 ARF
Wingspan: 49.5 in (1255 mm)
Wing Area: 586 in² (378 dm²)
Weight: 5.0-5.5 lb (2270-2490 g)
Wing Loading: 20-22 oz/ft² (61-67 g/dm²)
Length: 46 in (1170 mm)



LANIER RC™

By Great Planes®



STINGER II™



From the Experts:

Performance and looks have made the Stinger™ a long-standing sport favorite...and updated engineering makes the Stinger II ARF even easier to enjoy. The balsa airframe is prebuilt and covered in MonoKote® film, and assembly time is further reduced by the prehinged elevator and ailerons, along with a joiner tube for the wing. Painted fiberglass parts and a preinstalled pilot figure add the finishing touches.

Long story short...

What do you get when you combine the legendary looks and flight characteristics of the Stinger with advanced Great Planes technology? You get the Stinger II, a new take on a classic sport plane!

NEW PRODUCT

NISSAN GT-R LOOKS GIVE THE TOMAHAWK VX A REAL EDGE!

1/10 Tomahawk VX 4WD RTR w/Nissan GT-R Body



- The spirited Tomahawk VX touring car gets an exciting new look with the sleek Nissan GT-R body!
- Powered by a durable Pro-18BX (3.0 cc) engine with 2-speed automatic transmission
- Controlled by the 3-channel Cougar PS3 2.4GHz radio system
- Shaft-driven 4WD offers the best combination of traction and handling for on-road dominance
- Fully adjustable racing suspension, anodized 3 mm chassis, full bearings and heavy-duty oil shocks

An official Nissan product. Nissan, GT-R and associated symbols, emblems and designs are trademarks of Nissan Motor Co., Ltd., and are used under license to ThunderTiger.

TTRD1875 Tomahawk VX RTR w/Nissan GT-R Body

Length: 17 in (432 mm)
Wheelbase: 10.43 in (265 mm)
Width: 7.87 in (200 mm)
Weight: 3.63 lb (1650 g)



From the Experts:

With shaft-driven 4WD, a powerful Pro-18BX engine, 2-speed automatic transmission and double wishbone front and rear suspension, the Tomahawk VX nitro on-roader has established a reputation as a fierce touring car competitor. And now you can get it with an officially licensed Nissan GT-R body for the ultimate in scale looks. It's a model you'll want to display — when you're not taking the checkered flag!

Long story short...

A streamlined Nissan GT-R body tops the competitive chassis, making the Tomahawk VX RTR touring car look fast...even when standing still!



THE POPULAR SB-5: NOW AVAILABLE AS A BRUSHED OR BRUSHLESS RTR!

1/5 SB-5 Electric Motorcycle RTR



- In addition to a Cougar PS3 2.4GHz radio, this latest edition of the SB-5 is available with a brushed or brushless motor and speed control
- The chassis' design is inspired by the Pro version, giving the bike sharp handling and exceptional cornering capability
- The parallel link front suspension with adjustable rake features two oil-filled shocks that allow for more adjustability
- Big 1/5 scale dimensions allow for plenty of detail in the painted and trimmed Lexan® body with integrated rider figure
- Other performance perks include belt drive and full bearings
- No assembly required

TTRD9058 1/5 SB-5 EP Motorcycle Brushed RTR-Blue
 TTRD9059 1/5 SB-5 EP Motorcycle Brushed RTR-Green
 TTRD9060 1/5 SB-5 EP Motorcycle Brushless RTR-Blue
 TTRD9061 1/5 SB-5 EP Motorcycle Brushless RTR-Green
Length: 16.4 in (417 mm)
Height: 10 in (254 mm)
Wheelbase: 11.7 in (298 mm)
Weight: 2.73 lb (1240 g)
Requires: battery, charger

From the Experts:

Not only can you rip up the track straight out of the box with this ready-to-run SB-5, you can choose between a brushed or brushless power system! Many of the performance designs found in the race-proven kit version are here in the RTR — resulting in a big, bold super bike that looks and handles just like the real thing, and gets you out racing right now!

Long story short...

Thunder Tiger's SB-5 RTR lets you enjoy thrilling on-road racing without building — and with your choice of brushed or brushless electric power!



FAST EASY FLYING!™



- Everything you need is included and installed, so final assembly requires less than 5 minutes, with no tools
- “Rolled up” wingtips look sharp and create built-in dihedral
- FlightFlex™ material bends upon impact instead of breaking
- In the event of a nose-in crash, the Sky Cruiser’s pod-mounted pusher design offers more protection for the prop
- You can set the controls on the 4-channel 2.4GHz radio for “New Pilot” or “Experienced Pilot” by just pushing down on the stick
- The 2S LiPo battery and brushed motor provide plenty of power for this super-lightweight glider

SKYCRUISER™



COXA6503 Sky Cruiser RTF
Wingspan: 27.6 in (702 mm)
Weight: 3.3 oz (94 g)
Length: 20.2 in (515 mm)



From the Experts:

With the stable, easy-to-fly Sky Cruiser you can be enjoying strong climbs and long glides in less than 5 minutes! Virtually all building is done for you, and there's nothing extra for you to buy. The 2.4GHz radio eliminates any concerns about interference, and the FlightFlex material and exclusive SafeProp™ protection means you can fly with confidence.

Long story short...

Starting out in R/C flying doesn't get any easier than the Sky Cruiser!

ONE MODEL... TWO EXCITING WAYS TO FLY!

Convert the Syncro from a glider to a sport plane, right at the field!



Soaring Wing



Sport Wing

syncroTM

- This ARF comes with both a 55.5" span soaring wing and 31.5" sport wing
- A unique ducted fan power pod attaches with magnets and one bolt
- Quick and easy final assembly
- Durable AeroCell™ foam construction
- Removable landing gear

GPMA1581 Syncro EDF Glider ARF

Wingspan (Glider/Sport): 55.5 in/31.5 in (1410 mm/800 mm)
Wing Area (Glider/Sport): 400 in²/219 in² (25.8 dm²/14.1 dm²)
Weight (Glider/Sport): 28.0-29.5 oz/22.5-24.0 oz (795-835 g/640-680 g)
Length (Both Versions): 34.5 in (875 mm)



From the Experts:

With the Syncro EDF you can enjoy long, leisurely soaring with the 55.5" glider wing configuration — or change to the 31.5" sport wing for jet-like aerobatics, right at the flying field! The high-performance ducted fan unit works with both wing options, and the tricycle landing gear can be used for runway takeoffs or removed for grass landings. You can have this ARF in the air in no time, and the AeroCell foam airframe keeps you from being grounded!

Long story short...

No other plane can offer such a wide flight envelope as the Syncro!



DURATRAX® 1/10 ELEMENT™ 3900KV BRUSHLESS SYSTEM

An easy, affordable upgrade from brushed or stock brushless systems!

- Designed specifically for lightweight 1/10 scale 2WD off-rovers, including buggies, trucks and short course vehicles
- The sensorless ESC's high level of adjustability allows for fine tuning to enhance performance even more
- The 4-pole, sensorless 3900kV motor delivers more torque with greater efficiency
- All components mount easily; after installation a simple throttle set-up is all that's needed!



Pre-production images, subject to change.

DTXC3122 1/10 Element 3900kV Brushless System



Long story short...

Move up to the 1/10 Element 3900kV Brushless System, and turn your 2WD RTR model into a serious racing machine!

DURATRAX® SENSORED BRUSHLESS MOTORS

A premium power upgrade for your car, buggy or truck!

- Sensored means more precise control with no cogging
- Excellent for on- and off-road vehicles, the 2-pole design provides higher top speeds and the right amount of torque for today's 1/10 scale applications
- The vented can helps reduce and maintain lower operating temperatures, resulting in greater efficiency and longer life
- Choose from 4 turns, each an ideal match for the DuraTrax DE10™ Brushless Programmable ESC!



- DTXC3425 DM8.5T Sensored Brushless Motor
- DTXC3435 DM10.5T Sensored Brushless Motor
- DTXC3440 DM13.5T Sensored Brushless Motor
- DTXC3445 DM17.5T Sensored Brushless Motor



Long story short...

DuraTrax Sensored Brushless Motors deliver the reliability bashers need and the performance that serious racers demand!

ASSOCIATED SC10RS 2WD EP SHORT COURSE RACE TRUCK RTR

Check out the major upgrades to this National Short Course Champion!



- Now equipped with a powerful, water-resistant XP SC700 brushless speed control
- The 2.6:1 ratio gearbox includes a sealed gear diff with heavy-duty internal gears and externally adjustable V2 slipper clutch
- KMC® replica hex-drive wheels are mounted on high-traction JConcepts racing compound rear tires for better grip
- The suspension boasts adjustable blue-anodized aluminum V2 coil-over shocks
- An XP3-SS 2.4GHz 3-channel radio with metal gear steering servo offers dependable control



ASCC7047 SC10RS 2WD EP Short Course Race Truck RTR-Monster Energy
 ASCC7048 SC10RS 2WD EP Short Course Race Truck RTR-Pro Comp
 ASCC7049 SC10RS 2WD EP Short Course Race Truck RTR-Rockstar/Makita
 ASCC7050 SC10RS 2WD EP Short Course Race Truck RTR-Lucas Oil



Long story short...

Team Associated engineers took the 2010 R.O.A.R. National Champion and made the SC10RS even more formidable!

ASSOCIATED LRP SXX v.2/VECTOR X-12 STOCK-SPEC COMBOS

Killer combos for stock class success!

- The SXX v.2 Stock-Spec speed control boasts improved throttle response, higher efficiency and more precise control
- Features include twin BEC 6V/3A output with 3.0V to 7.4V batteries, internal Temp Check and AutoCell System 2
- The rebuildable Vector X-12 Stock-Spec motor puts more power at your disposal, with a high-strength 12.5 mm sintered rotor, sealed winding and more



ASCC0677 LRP SXX v.2/Vector X-12 10.5T Stock-Spec Combo
 ASCC0678 LRP SXX v.2/Vector X-12 13.5T Stock-Spec Combo
 ASCC0679 LRP SXX v.2/Vector X-12 17.5T Stock-Spec Combo
 ASCC0680 LRP SXX v.2/Vector X-12 21.5T Stock-Spec Combo



Long story short...

Developed specifically for stock-spec racing, these SXX v.2/Vector X-12 combos put the competition in your rear-view mirror!

ASSOCIATED LRP VECTOR K4 BRUSHLESS MOTORS

The ideal brushless power plant for nearly any racing application!

- Shares many features with the Vector X-12, including precise sensor positioning, oversized ball bearings and HDS (High Density Stack) technology
- Robust performance is courtesy of a rotor with a 5 mm sized shaft
- Totally rebuildable, with a choice of 5 different winds



ASCC0430 LRP Vector K4 Brushless Motor 6.5T
 ASCC0440 LRP Vector K4 Brushless Motor 8.5T
 ASCC0450 LRP Vector K4 Brushless Motor 10.5T
 ASCC0460 LRP Vector K4 Brushless Motor 13.5T
 ASCC0480 LRP Vector K4 Brushless Motor 17.5T



Long story short...

Whether it's off-road adventure or on-road thrills, Vector K4 brushless motors deliver the speed and power to keep you in front of the pack!

HPI RACING® E-FIRESTORM 10T FLUX RTR

Capable of speeds of over 50 mph!

- Now with waterproof electronics, 2.4GHz radio and eye-catching body graphics
- Built for LiPo power, with a tough, all-metal gear transmission
- Reach blazing speeds with 2S or 3S LiPo packs
- Includes 8.4V battery and "AA" batteries
- Compatible with many Firestorm and Blitz parts and options



HPID78** E-Firestorm 10T Flux RTR
Length: 17 in (432 mm)



Long story short...

Lots of upgrades make the E-Firestorm 10T Flux the stadium racer everyone will be chasing!

HPI RACING® FIRESTORM 10T RTR

An even hotter Firestorm than before!

- Now with a 2.4GHz radio system, for the ultimate in worry-free control
- Looks have been upgraded with a pre-painted DSX-1 body with new graphics and shiny chrome Scorch wheels
- The powerful 3.0 engine still delivers realistic speed, sound and excitement
- The tough all-metal gear transmission stands up to the demands of nitro racing
- Also included: bonus accessories such as glow igniter, extra glow plug, fuel bottle, 4-way wrench and Plazma AA batteries



HPID65** Firestorm 10T RTR
Length: 16.7 in (424 mm)



Long story short...

By including a 2.4GHz radio, chrome wheels, new graphics and bonus accessory package, HPI's Firestorm 10 turns up the heat on the competition!

HPI RACING® DESERT TROPHY TRUCK 4WD RTR™

Stir up a sandstorm with this realistic racer!

- Tough steel dogbones on all four corners offer the durability to run lap after lap around the competition
- 4-wheel drive delivers winning traction and stable handling
- A roll cage, detailed interior and officially licensed Yokohama graphics add to the truck's authenticity
- Yokohama tires provide gripping power for off-road adventures



HPID17** Desert Trophy Truck 4WD RTR
Length: 21 in (533 mm)



Long story short...

HPI's Desert Trophy Truck puts beginners out front with style and performance — at an affordable low price!

HPI RACING® BLITZ ESE PRO KIT W/ATTK-10 BODY

Get ready to "blitz" all short course truck competitors!

- Equipped with an authentic MIP ball diff and machined anodized aluminum shocks
- The included Beams come in HB's race winning Pink compound for superior handling and traction on the track, helping your ESE secure that winning spot on the podium.
- The matte black Mk.8 V2 short course wheels use a single inner foam insert, and mount perfectly on the HB Beams tires
- Titanium turnbuckles add style and strength while lessening overall suspension weight



HPIC1626 Blitz ESE Pro Kit w/Attk-10 Body



Long story short...

No compromises were made in engineering the Blitz ESE Pro Kit to be a high-performance short course racing champion!

VSTANK® 1/24 TIGER 1 MID-PRODUCTION WINTER CAMO

Command a detailed R/C replica of the popular German WWII tank with a Winter Camouflage trim scheme!

- Tackles rugged terrain and inclines of up to 35° with all-wheel suspension
- The turret rotates 330°, and the main gun recoils after firing
- Fires infrared beams of light in mock combat with up to five other VSTanks
- Hitting the sensor on the opposing tank's turret stops the tank in its tracks for 3 seconds; after six hits the tank is disabled



VSKD85** 1/24 Tiger 1 Mid-Production Winter Camo



Long story short...

You'll want to show this display-quality model of the Winter Camo Tiger 1 tank whenever you're not taking it into battle!

FUTABA® 3PRKA 2.4GHZ FHSS W/R203GF

An ideal entry-level 2.4GHz surface system!



FUTK3100 3PRKA 2.4GHz FHSS w/R203GF
FUTL7603 R203GF 2.4GHz FHSS 3-Channel Receiver-3PRKA



All these features, and more!

- Throttle and Steering Trim
- Throttle End Point Adjustment
- Throttle/Steering Reverse
- Channel Three Switch
- Throttle Fail Safe
- 70:30 Throttle Mode

Includes an R203GF 3-channel 2.4GHz FHSS High Voltage (4.8V-7.4V) receiver

Not compatible with FASST™ systems.

Long story short...

Whether you're just starting out or upgrading the radio in your Ready-To-Run model, the 3PRKA is a super value in 2.4GHz technology!



DLEQ0301
Propeller Drill
Guide DLE30

DLE™ Engines Propeller Drill Guides

Get an accurate, precise propeller hole, every time!

- Precision machined steel guides let you drill out props to the correct pattern for each engine using a hand drill
- A bolt and washers are included with each guide

DLEQ0551 Propeller Drill Guide DLE55
DLEQ1111 Propeller Drill Guide DLE111
DLEQ1701 Propeller Drill Guide DLE222



FUTM1106
BPS-1 RPM Sensor

Futaba® BPS-1 RPM Sensor

Put an end to heli engine "sagging"!

- Accurately measures a heli engine's RPM, and allows you to set a minimum RPM level that keeps your model performing at its best during competition
- Installs easily and cleanly in O.S.® .55-.91 heli engines with the CGY750 gyro
- Weighs approximately 8 grams; cable length is 655 mm



HRCL3772
Spectra Pro Module
72MHz AIR

Hitec Spectra Pro Module 72MHz AIR

Expands receiver options for Aurora 9 owners

- This FM synthesized module fits Hitec's Aurora 9 system
- Allows Aurora 9 users to operate any 72MHz FM/PPM receiver on either a negative or positive shift



HRCM5086
HS-5086WP Micro Metal
Gear Digital Servo

Hitec HS-5086WP Micro Metal Gear Digital Servo

Designed to stay high and dry in wet conditions

- A digital waterproof micro servo with an IP-68 rating
- Creates torque of 44.4 oz-in @ 6.0V, with a speed of 0.15 sec/60

Hitec High Voltage Speed & Torque MG Digital Servos

Maximum performance in a mini class HV servo!

- Both servos offer high resolution and high voltage in a compact size
- The coreless, metal-gearred HS-7235MH is designed for super speed
- The HS-7245MH is also metal-gearred and coreless, for modelers needing extra torque

Also Available:

HRCM7245 HS-7245MH HV Torque MG Digital Servo



HRCM7235
HS-7235MH HV Speed
MG Digital Servo

Hitec High Voltage Digital Servos

High-voltage, heavy-duty servos at an economical price!

- A perfect match for sport planes up to 25% scale, as well as sport cars and trucks
- The HS-5495BH with Karbonite gears is designed for models under 12 pounds
- Metal gears in the HS-5496MH offer long-lasting reliability

Also Available:

HRCM5496 HS-5496MH HV Digital Metal Gear Sport Servo



HRCM5495
HS-5495BH HV Digital
Karbonite Gear Sport Servo

Novak GTB 2 Sportsman Racing Brushless ESC-Low Profile

High performance — while layin' low!

- All of the great Sportsman features, in an ESC only 0.7" tall
- Patent-pending NovaBrakes™ provide instantaneous braking under any conditions
- User-friendly One-Touch Programming Interface makes set-up easy
- Also has built-in Voltage Cut-Off Circuitry, which monitors battery voltage



NOVM1708
GTB 2 Sportsman Racing
Brushless ESC-Low Profile

Novak Ballistic Epoxy Wound Stators

Change your motor turn without changing out your motor!

- An innovative motor design featuring interchangeable wound stator construction for maximum versatility
- Replacing stators of different winds in the same motor is as easy as unscrewing two main screws
- Each stator is dipped in a special epoxy that prevents the wires from moving or rubbing in extreme conditions, and helps transfer heat more efficiently

Also Available:

NOVC0504 Ballistic 550 Epoxy Wound Stator 4.5T/5000kV

NOVC0610 Ballistic 540 Epoxy Wound Stator 10.5T/4200kV

NOVC0613 Ballistic 540 Epoxy Wound Stator 13.5T/3300kV

NOVC0617 Ballistic 540 Epoxy Wound Stator 17.5T/2200kV



NOVC0608
Ballistic 540 Epoxy
Wound Stator
8.5T/5000kV



VNRA5033
3S 11.1V 40C
LiPo Battery

Venom™ 3S 11.1V 2200mAh LiPo Aircraft Batteries

Pump up the performance in your 450-size heli or park flyer plane!

- Enjoy harder climb-outs, higher top speeds and longer flight times — all with a battery that fits in the same space as a 20C pack!
- The 50C LiPo pack is the highest current capable battery available in its class
- Both packs are equipped with heavy-duty 12AWG leads and Universal Plugs that take the power loads demanded from today's brushless power systems

Also Available:
VNRA5037 3S 11.1V 50C LiPo Battery



VNRC5036
50C 1S 5000mAh 3.7V
Hardcase LiPo Battery

Venom™ 50C 1S 5000mAh 3.7V Hardcase LiPo Battery

The performance you need, at a price you'll love!

- Continuously rated for 50C to deliver awesome power, especially for 1/12 scale on-road touring cars
- Comes with heavy-duty 12AWG wire leads equipped with the Universal Plug System for simple plug-in operation
- Features a durable hard case for added protection



VNRP0664
Pro Charger
Balance Block XH

Venom™ Pro Charger Balance Block XH

Use Venom's Pro Charger with even more LiPo batteries!

- The XH Balance Block allows users of several brands of batteries to be charged with Venom's Pro Charger and Pro Charger Plus
- Features ports for charging 2-3s, 4-5s and 6s packs



WRXG2040
B5-Pro .21 Off-Road
Engine

Werx Racing B5-Pro .21 Off-Road Engine

Step up to the power of the Pro!

- The super-stiff, lightweight aluminum case is black anodized for killer looks and better heat dissipation
- A CNC-machined billet rear backplate further decreases weight while increasing rigidity
- A Swiss-made ceramic rear bearing reduces internal friction and boosts acceleration
- The larger-diameter cooling head has been engineered to lower the engine's CG



WRXG2050
B6-Pro .21 Off-Road
Engine

Werx Racing B6-Pro .21 Off-Road Engine

The newest "Pro" level power plant from Werx!

- Incorporates many of the upgrades of the B5-Pro in improving upon the original B6 engine
- Utilizes a full race crankshaft that has been lightened and epoxy ramped to reduce mass and increase mixture flow
- Heat shielding material on the aluminum carburetor reduces heat soak for more consistent performance

IT'S SUMMER, AND IT'S TIME TO

DX450

www.gpdealer.com

Give your DX450 an even bigger edge with these parts and accessories!



DTXC4667
Oil Shock Set-Front Aluminum



DTXC4640
Steering Rod Set



DTXC4651 Wheel Front (Carbon Texture)
DTXC4652 Wheel Rear (Carbon Texture)



DTXC4482
Wheelie Bar

- DTXC4650 Arm Rear (Carbon Texture)
- DTXC4610 Frame Main Left/Right Carbon
- DTXC4611 Frame Upper Left/Right Carbon
- DTXC4612 Frame Rear Left/Right Carbon
- DTXC4625 Steering Set Oil
- DTXC4641 Hub Front Aluminum
- DTXC4644 Main Gear Steel
- DTXC4653 Shock Body Front (Carbon Texture)
- DTXC4655 Handlebar Muffler Foot Peg Set (Carbon Texture)
- DTXC4656 Hub Carrier Front (Carbon Texture)
- DTXC4665 Arm Rear (Gold)
- DTXC4666 Suspension Mount Front Aluminum (Gold)
- DTXC4669 Battery Case (Carbon Texture)

Both models share style and

- Impressive dimensions that allow for lots of scale detail
- Realistic-looking pre-painted driver figure
- A flywheel gyro system that "rights" the bike after leaning into a turn and keeps the bike stable even at low speeds

Go both on-road AND off-road with this rugged machine!

DTXD02** DX450 1/5 Brushless Motorcycle RTR
Length: 17.3 in (440 mm)
Height: 15.3 in (390 mm)

RIDE!

Get your motorcycle mojo with DuraTrax's big, exciting 1/5 scale brushless R/C bikes — nobody offers 2-wheel thrills as affordable as DuraTrax does!

www.gpdealer.com

performance features galore!

- A powerful 3800kV brushless motor and ESC
- Confident, interference-free control with a Tactic™ 2.4GHz radio system
- Available in 4 hot colors



These hop-ups will boost your DXR500's speed and handling to the max!



DTXC4784 Motor Mount Aluminum



DTXC4828 Steering Set Oil Aluminum



DTXC4863 Wheel Front Aluminum



DTXC4769 Fork Support Front

The speed, strength and style for street-racing success!

- DTXC4459 Steel Sprocket 26T
- DTXC4748 Body Cowling Bottom PC
- DTXC4756 Disc Brake Conversion Set Front
- DTXC4767 Fender Front/Rear PC
- DTXC4772 Gyro Flywheel Lightweight Aluminum
- DTXC4791 Rear Arm Aluminum
- DTXC4794 Shock Mount Front Aluminum
- DTXC4796 Shock Body Front Air Aluminum
- DTXC4798 Shock Set Rear Oil Aluminum
- DTXC4805 Shock Set Front Oil Aluminum
- DTXC4827 Steering Damper Body Oil Aluminum
- DTXC4830 Stabilizer Set
- DTXC4865 Wheel Rear Aluminum

DTXD04** DXR500 1/5 Brushless Motorcycle RTR
Length: 16.75 in (425 mm)
Height: 11 in (280 mm)



WANT TO FLY??
LET REALFLIGHT® SHOW YOU HOW!

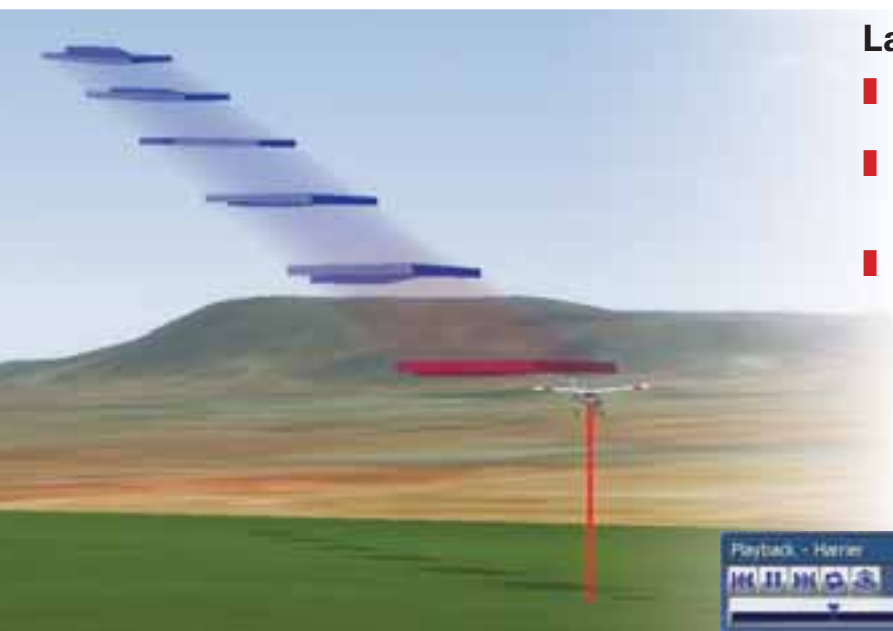
REALFLIGHT®

R/C FLIGHT SIMULATOR

G5.5™

TRUE TO LIFE™

From the most basic maneuvers to the most advanced aerobatics, RealFlight G5.5 takes you through it step-by-step, with both visual aids and verbal cues that you learn at your own pace...and with no risk to your actual model!

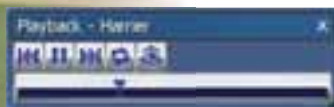


Landing and Takeoff Trainer

- Ideal for beginners with a trainer such as the NexSTAR™
- Lines on both sides of the runway offer a visual for pilots on using the rudder to stay centered during takeoffs and landings
- The landing trainer uses arrows in the sky to show the glide path in a stair step pattern

Virtual Flight Instructor

- Receive coaching from expert pilots, while watching videos that show the proper stick movements
- Study pre-recorded airplane and heli maneuvers for fliers of all skill levels
- Learn from acclaimed fliers such as Frank Noll, Todd Bennett and Jim Bourke



GPMZ4450 RealFlight G5.5 Mode 2
GPMZ4451 RealFlight G5.5 Mode 1



Find out more — and watch the video — at realflight.com!

America's Best R/C Sale!

THE SAVINGS CONTINUE...
FOR ONE MORE MONTH!

Hurry...sale prices are only good through June 30, 2011!

If you want the best deals on R/C merchandise, NOW is the time — and THIS is the sale! With over 115 quality R/C products featured, including airplanes, helis, trucks, boats, radios and accessories, America's Best R/C Sale is sure to have something for EVERYONE...and all at incredible prices!

You'll find popular items from over a dozen of your favorite manufacturers — some at up to \$50 off — but this is the last month, so you'll want to act fast. Visit your local participating hobby dealer before June 30, 2011 and take advantage of this super savings event!

The selection of items is HUGE

For a complete list of products on sale visit BestRC.com™ and click on the America's Best R/C Sale logo.



To locate the participating hobby retailer nearest you, click on the Find A Dealer logo on the sale page off of BestRC.com. You'll get store names, addresses, phone numbers — and maybe even a map!

GET \$20 IN R/C MERCHANDISE...
...WHEN YOU PURCHASE REALFLIGHT G5.5!



\$20 MERCHANDISE CERTIFICATE

RealFlight G5.5 is already far and away the #1 choice for virtual R/C flight — and if you get it by June 30, 2011 you'll get even more: a certificate worth \$20 towards quality products from any of nearly 30 top-notch R/C manufacturers!

Get complete information, official rules and a downloadable Rebate Request Form by visiting BestRC.com!

GPMZ4450/GPMZ4451

Your Price \$199.97

Suggested prices are available only at participating hobby shops in the U.S. and Canada. Local prices may vary and are set by the independent retailers. RealFlight rebate request form and official rules are available at bestrc.com or realflight.com. RealFlight G5.5 purchases must be made before June 30, 2011 and requests must be submitted by July 31, 2011.

Turn the page for more exciting America's Best R/C Sale deals!

America's



SAVE \$10

Cox® Sky Ranger® EP Park Flyer RTF
COXA6501
Your Price \$89.99



SAVE \$50

Flyzone™ Switch™ 2.4GHz RTF
HCAA2530
Your Price \$279.97



SAVE \$10

Hobbico® NexSTAR™ EP Mini Rx-R™
HCAA0700
Your Price \$179.99



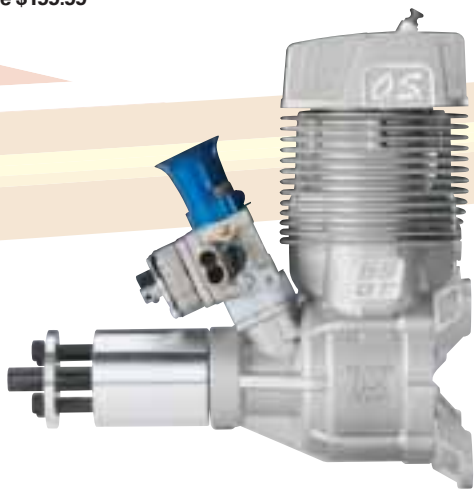
SAVE \$20

Great Planes® Revolver™ .61-.91 ARF
GPMA1019
Your Price \$199.99



SAVE \$10

ElectriFly® Rifle™ EP ARF
GPMA1805
Your Price \$99.98



SAVE \$20

O.S.® GT55 Gas Engine
OSMG1555
Your Price \$629.99

Suggested prices are available only at participating hobby shops in the U.S. and Canada. Local prices may vary and are set by the independent retailers.

Best R/C Sale!

SAVE \$30



Heli-Max® Axe™ 400 RTF

HMXE0800

Your Price \$349.99

HMXE0801 Axe™ 400 Rx-R™ **Save: \$20** **Your Price: \$199.99**



SAVE \$50

O.S.® 91HZ Ringed Heli Engine

OSMG1974

Your Price \$349.99

SAVE \$20



Thunder Tiger® Raptor 50 Titan SE Kit

TTRE0063 Raptor 50 Titan SE Kit-Blue **Save: \$20**

Your Price: \$329.99

TTRE0064 Raptor 50 Titan SE Kit-Red **Save: \$20**

Your Price: \$329.99

TTRE0065 Raptor 50 Titan SE Kit-Yellow **Save: \$20**

Your Price: \$329.99

SAVE \$30

Futaba® GY701 Gyro & Governor

FUTM0822

Your Price \$239.97



SAVE \$50

Futaba® 10CAG 2.4GHz FASST™ Radio-Air

FUTK9255

Your Price \$599.99

FUTK9256 10CAG 2.4GHz FASST™ Radio-Heli . . . **Save: \$50**

Your Price: \$599.99



SAVE \$5

Futaba® R6106HFC 2.4GHz FASST™ 6-Channel Receiver

FUTL7651

Your Price \$64.99



Turn the page for more exciting America's Best R/C Sale deals!

America's

SAVE \$5

FlightPower® EON-X™ Lite 3S 11.1V
2500mAh 25C LiPo Battery
FPWP4238
Your Price \$49.99
FPWP4064 EON-X™ Lite 2S 7.4V 800mAh 25C . . . **Save: \$2**
FPWP4114 EON-X™ Lite 2S 7.4V 1300mAh 25C . . . **Save: \$3**
FPWP4115 EON-X™ Lite 3S 11.1V 1300mAh 25C **Save: \$2**



Your Price: \$17.99
Your Price: \$19.99
Your Price: \$29.99

SAVE \$3

ElectriFly® Equinox™ LiPo Cell Balancer
GPMM3160
Your Price \$31.99



SAVE \$2

ElectriFly® SafeCharge™
LiPo Charge Bag
GPMP0751
Your Price \$17.99



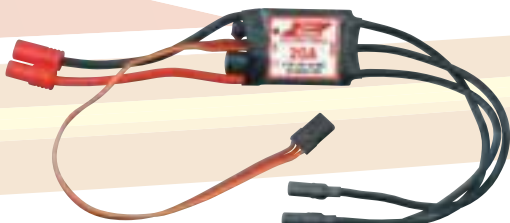
Hobbico® Hydrimax™ NiMH Receiver Batteries

HCAM6301	NiMH 4.8V 750 Flat Rx U AAA	Save \$1	Your Price: \$11.99
HCAM6308	NiMH 4.8V 1600 Flat Rx U 2/3A	Save \$2	Your Price: \$19.99
HCAM6309	NiMH 4.8V 1600 Square Rx U 2/3A	Save \$2	Your Price: \$19.99
HCAM6321	NiMH 4.8V 2000 Flat Rx U AA	Save \$2	Your Price: \$18.99
HCAM6322	NiMH 4.8V 2000 Square Rx U AA	Save \$2	Your Price: \$18.99
HCAM6333	NiMH 4.8V 3600 Flat Rx U Sub C	Save \$2	Your Price: \$30.99
HCAM6335	NiMH 4.8V 4200 Flat Rx U Sub C	Save \$2	Your Price: \$37.99
HCAM6342	NiMH 6V 1600 Flat Rx U 2/3A	Save \$2	Your Price: \$22.99
HCAM6351	NiMH 6V 2000 Flat Rx Hydrimax	Save \$2	Your Price: \$22.99
HCAM6355	NiMH 6V 4200 Flat Rx U Sub C	Save \$5	Your Price: \$44.99



SAVE \$10

SuperTigre® GS45 ABC RC Engine w/Muffler
SUPG0150
Your Price \$79.99

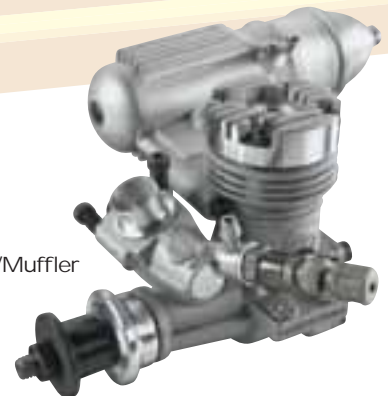


SAVE \$2

SuperTigre® 20A Brushless ESC
SUPM1020
Your Price \$19.99

SAVE \$5

Thunder Tiger® GP 10 ABC Engine w/Muffler
TTRG1012
Your Price \$59.99



Suggested prices are available only at participating hobby shops in the U.S. and Canada. Local prices may vary and are set by the independent retailers.

Best R/C Sale!

TURN HERE FOR GENERAL HOBBY PRODUCTS



SAVE \$10

AquaCraft® Mini Thunder™ Hydroplane RTR
AQUB16**
Your Price \$99.99



SAVE \$10

AquaCraft® Mini Rio™ RTR
AQUB15**
Your Price \$99.99



SAVE \$3

DuraTrax® 7.4V 2500mAh 20C LiPo Battery
DTXC1805

Your Price \$34.99

DTXC1804	LiPo 7.4V 2500mAh 20C	Save: \$5	Your Price: \$29.99
DTXC1810	LiPo 7.4V 3700mAh 25C 4mm pin	Save: \$5	Your Price: \$49.99
DTXC1825	LiPo 7.4V 5400mAh 20C 4mm pin	Save: \$9.99	Your Price: \$79.99



SAVE \$20

DuraTrax® DX450 1/5 Scale Motorcycle RTR
DTXD02**
Your Price \$329.98



SAVE \$10

Futaba® 3PMX 2.4GHz FASST™ Radio
FUTK2021
Your Price \$169.95



SAVE \$20

O.S.® 21XZ-B Engine
OSMG2050
Your Price \$259.99

SAVE \$30

Thunder Tiger® Pro 28B-R Engine
TTRG0028
Your Price \$129.99



For a complete list of products
visit bestrc.com and
click on the America's Best R/C Sale logo.

BUILD IT . . . TAKE IT

THAT'S WHAT "MAKE IT 'N TAKE

"Make It 'n Take It" events let you assemble a plastic model kit or model rocket right in the hobby shop — and it's yours to keep! You build it, take it home and enjoy it.

Just getting started?
Visit Revell.com



This website has everything you need to get started with the fun of model building

- *How-to Videos*
- *Choosing the right model*
- *The tools you'll need*
- *Answers to common questions*

Soon you'll be saying...

I made that!



1/200 Space Shuttle



1/110 SR-71



1/72 F-117A Nighthawk

HOME . . . & ENJOY IT!

IT" EVENTS ARE ALL ABOUT!

Nothing beats hands-on experience for getting started, and Make It 'n Take It events provide you with the model, tools and guidance you need to successfully build your very own plastic model kit or model rocket.



1/25 Corvette Coupe



1/25 '63 Corvette Convertible



1/25 Hummer H1



GET IN ON THE FUN!

Watch for Make It 'n Take It events at your local hobby shop.

HASEGAWA® 1/72 SCALE F-4B/N PHANTOM II

Combat-ready in the blink of an eye.



The F-4 Phantom II celebrated its first flight over 50 years ago, yet it remains one of the world's fastest fighters! The U.S. Navy's VF-151 and U.S. Marine Corps' VMFA-115 were among the first squadrons to be equipped with F-4B Phantom IIs in 1964. Both benefited from the F-4B's all-out speeds and high-altitude performance during the Vietnam War. VF-111 reaped these rewards as well after transitioning to the upgraded F-4N in the mid-1970s. By the mid-1980s, all three squadrons started to phase out the Phantom II. VF-151's final flight in March, 1986 also marked the last-ever Phantom II launch from an aircraft carrier.

- This highly detailed kit lets you recreate the early F-4B, or the upgraded F-4N.
- Features three marking options: 1. F-4N: U.S.S. Roosevelt VF-111 "Sundowners," CAG NM200; 2. F-4B U.S.S. Midway VF-151 "Vigilantes," CAG NF200 and 3. F-4B VMFA-115 "Silver Eagles," VE10.

Did you know?

- Almost 5,200 Phantom IIs were built from 1958-1981, making it the most-produced U.S. supersonic aircraft!
- The Phantom II set a total of 16 speed and altitude world records. Five speed records went unchallenged until the F-15 Eagle was introduced in 1975.
- The Phantom II's "Spook" emblem, which was originally designed for shoulder patches, has since appeared on virtually every kind of merchandise imaginable!

From the Experts:

One of America's fastest fighters has been faithfully recreated by Hasegawa, resulting in a kit that belongs on every history buff's wish list!

Long story short...

Exquisite detail and multiple marking options make the Hasegawa 1/72 F-4B/N Phantom II stand out!

01566/E36
HSGS1566
Total parts: 114
Skill level 3



HASEGAWA® 1/72 SCALE F-4EJ KAI PHANTOM II

Custom-built for the Japan Air Self-Defense Force.

www.gpdealer.com



After much consideration, Japan chose the McDonnell-Douglas F-4 Phantom II to be the country's newest fighter in November, 1968. In fact, Japan was one of the very few non-U.S. countries that could produce Phantom IIs under license. Built by Mitsubishi®, the subsequent F-4EJ Kai upgrade was delivered to the J.A.S.D.F in November, 1989. It featured updated electronics, including an improved central computer, AN/APG-66J pulse Doppler radar and the J/APR-6 homing and warning system. Many were also equipped with ASM-1 or ASM-2 anti-ship missiles mounted underneath the aircraft's wings.

- This newly tooled kit features three marking options: 1. J.A.S.D.F. 83rd AG 302nd SQ., Code: 414, Naha A.B.; 2. J.A.S.D.F. 6th AW 306th SQ., Code: 416, Komatsu A.B. and 3. J.A.S.D.F. 5th AW 301st SQ., Code 417, Nyutabaru A.B.

Did you know?

- Although Mitsubishi produced over 150 F-4EJ Kai Phantom IIs, only 90 are currently believed to be in active service.
- Visitors to Okinawa's Kadena Air Base are greeted by a single F-4 aircraft as they drive in from the main gate.
- The J.A.S.D.F. 306th Squadron was the first to fly the upgraded F-4EJ Kai in 1989. Seven more squadrons soon followed.

From the Experts:

Modelers who are looking for a rarely-reproduced subject will find that the Hasegawa 1/72 F-4EJ Kai is just the kit they've been searching for!

Long story short...

The F-4EJ Kai Phantom II is one of history's most unique aircraft. This 1/72 scale Hasegawa kit does it justice...and then some!

01567/E37
HSGS1567
Total parts: 117
Skill level 3



HASEGAWA® 1/12 SCALE REPSOL® HONDA® RS250RW "2007 WGP 250"

Destined for Grand Prix greatness.



The 2007 MotoGP season was marked by several notable changes. For the previous five seasons, riders could race bikes up to 990 cc. That year, riders were restricted to smaller 800 cc bikes, which offer superior braking and handling. Teams were also restricted to a maximum 31 tires per race weekend per rider. Pressure from sponsors and riders resulted in an increase of nine additional tires later in the season. Repsol Honda racer Julián Simón (#60) scored 123 points this season, placing 9th. Shuhei Aoyama (#73) was also on the team, earning his first-ever pole position during a race at Motegi. Overall, the Honda team earned 313 points in 2007, finishing 2nd (just behind Ducati®).

- This limited edition kit features many newly tooled parts, including a seat pad, a rear swing arm, a tank pad and rear fender parts.
- Includes two marking options: 1. 2007 WGP 250, Number 73 Rider: Shuhei Aoyama and 2: 2007 WGP 250, Number 60 Rider: Julián Simón.

21701
HSGS1701 (Limited Edition)
Total parts: 145
Skill level



Did you know?

- 2007 was the 59th season of the F.I.M. (Fédération Internationale de Motocyclisme) Road Racing World Championship.
- Spain's Jorge Lorenzo was the overall winner of the 250 cc class in 2007, earning 8 first-place finishes and 312 total points.
- Shuhei Aoyama is the younger brother of MotoGP racer Hiroshi Aoyama, the celebrated, last-ever winner of the 250 cc World Championship in 2009.

From the Experts:

MotoGP fans will marvel at the level of detail found in this authentic 1/12 scale model. It's so fun to build, fans will keep coming back for more!

Long story short...

Get your hands on this exciting, limited edition kit now, before supplies run out!





SNAPTITE® 1/32 SCALE PETERBILT® CABOVER 352
An easy-to-build replica of the classic cabover.

Introduced in 1959, the Peterbilt Cabover 352 with tilting cab was designed as a replacement for the non-tilting 351 cabover. The 352's "Panoramic Saf-T-Cab" was constructed from hand-tooled UniLite. Available cab sizes ranged from 54 in. (1,372 mm) to 110 in. (2,794 mm) from the bumper to the back of the cab (BBC). **Kit features** easy snap assembly, a detailed body, interior and chassis; dual exhausts, air horns, mirrors, chrome-plated wheels and colorful Peel 'n Stick decals with stock and custom graphics.

851964 RMXS1964 Total parts: 59 Skill level 1 Length: 8.3 in (210 mm)



1/25 SCALE 2010 FORD® MUSTANG® GT COUPE
Detroit's leanest, meanest driving machine.

Unveiled in November 2008, the 2010 Mustang GT Coupe was praised instantly for its lean, mean appearance and aerodynamic design. One of the most popular power plants available to drivers is a 4.6L Modular V-8, which produces an impressive 315 hp and 325 lb.-ft. torque. **Kit features** an opening hood with a 4.6L Single Over Head Cam V-8 engine, a rear spoiler, plated dual-exhaust tips, 19 in. (483 mm) spoke wheels, soft black tires, chrome-plated parts and decals with authentic factory graphics and optional stripes.

854272 RMXS4272 Total parts: 117 Skill level 2 Length: 7.5 in (191 mm)



1/48 SCALE P-47N THUNDERBOLT
The return of the revered, reliable "Jug."

The P-47N – the last variant produced – was initially developed to escort B-29 bombers during air raids over Japan. The most distinguishing feature of the "N" variant was its in-wing 50-gallon (190-liter) fuel tanks, which extended the aircraft's range by 2,000 miles (3,200 km). **Kit features** recessed panel lines, a detailed radial engine, a detailed cockpit, weighted tires, complete underwing stores, a detailed pilot and markings to recreate P-47Ns flown by pilots Lt. Oscar Perdomo and Lt. Col. Ollie O. Simpson.

855314 RMXS5314 Total parts: 105 Skill level 2 Length: 9.1 in (232 mm)
Wingspan: 10.8 in (273 mm)



1/25 SCALE '97 FORD® F-150 XLT
"No-nonsense" tough, like a Ford should be.

For the 1997 model year, Ford made their best-selling Ford F-150 XLT more aerodynamic than ever. New touches included a rounded nose, low-drag mirrors, flush headlights, signal lamps and a wrap-around chrome bumper. Buyers could also choose between the stock 4.2L V-6 or a more powerful 4.6L V-8 engine, which produced 220 hp at 4,750 rpm. **Kit features** an opening hood with a replica 4.6L V-8 engine, a detailed XLT cab interior, chassis and suspension; soft black tires, chrome-plated parts and decals with factory markings and custom graphics.

857215 RMXS7215 Total parts: 116 Skill level 2 Length: 9 in (229 mm)



1/72 SCALE B-52B & X-15 EXPERIMENTAL AIRCRAFT COMBO

Built to break records.

Paired together, the X-15 and B-52B set multiple speed and altitude records throughout the 1960s. The most notable record was set in October, 1967, when the X-15 reached 4,519 mph (7,273 km/h). This incredible record still exists today. **Kit combo features** the choice of mounting the X-15 onto the B-52B, or building the X-15 as a static model on landing gear with a standing pilot. The B-52B can also be modeled with its landing gear down or retracted. Set includes decals with authentic U.S. Air Force and NASA® markings.

855716 MONS5716 Total parts: 161 Skill level 3 Length: 25.8 in (656 mm)
Wingspan: 31.3 in (794 mm)



1/32 SCALE PANZERSPAHWAGEN SD. KFZ. 232

Heavily armed, for risky recon missions.

Available with six- or eight-wheel drive, the Sd. Kfz. 232 was used for recon and scouting missions during WWII. Sd. Kfz. 232s were usually armed with a 2 cm KwK 30 L/55 autocannon and a 7.92 mm MG 34 machine gun. **Kit features** the choice of a Sd. Kfz. 232 communications vehicle with an overhead frame antenna, or the Sd. Kfz. 231 armored car without antenna. Includes soft black tires, three crew figures, a campfire, a fly tent with poles and decals with markings for the Afrika Corps and the Polish Campaign.

857856 MONS7856 Total parts: 145 Skill level 2 Length: 8 in (203 mm)



NEW RELEASES



1/144 SCALE EMBRAER 170® "DEMONSTRATOR"

The Brazilian behemoth beckons.

The Embraer 170 took its historic first flight on February 19, 2002. Three months later, the 170 was unveiled at Europe's Regional Airline Association convention. The aircraft became an instant hit with airlines all over the world. Hundreds of orders for the 170 were taken, even though it didn't earn certification for another two years! Today, 180 Embraer 170s are in service with such major airlines as Republic Airlines® and Australia's Virgin® Blue. This limited edition **kit features** two marking options: 1. Demonstrator, Code: PP-XJA and 2. Demonstrator, Code: PP-XJF.

10681 HSGS0681 (Limited Edition) Total parts: 50 Skill level 3



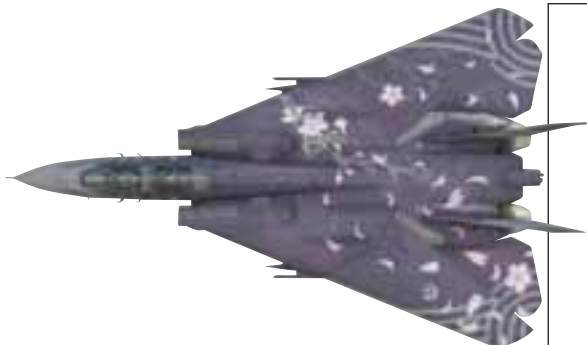
1/72 SCALE MORANE-SAULNIER M.S. 406 & DEWOITINE D.520 "BATTLE OF FRANCE" KIT COMBO

France's most famous WWII fighters.

The low-wing M.S. 406 monoplane was the most important French fighter of its era. However, the D.520 was better equipped to fight against Messerschmitt Bf 109s. **Each kit features** two marking options. **M.S. 406:** 1. French A.F. GC III/1 2 Escadrille, Code: 27 (L801) s/n 772, France, May 1940 and 2. French A.F. GC I/2 2 Escadrille, Code: 9 (N869) s/n 451, France, May 1940. **D.520:** 1. French A.F. GC I/3 2 Escadrille, Code: 10 s/n 73, France, April 1940 and 2. French A.F. Special Defense Escadrille, Code: 5 s/n 79, France, May 1940

01941 HSGS1941 (Limited Edition) Total parts (x 2): 36 Skill level 3



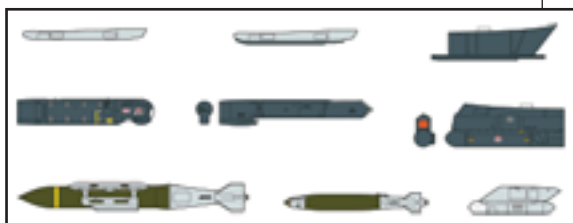


1/72 SCALE F-14D TOMCAT "ACE COMBAT®": CHERRY BLOSSOM™

Distinctively designed, for flight sim fans.

Even though the F-14 Tomcat was retired by the U.S. Navy in September 2006, it remains one of the world's most well-known modern aircraft. Featuring twin GE® F110-400 engines, upgraded digital avionics systems and an Airborne Self-Protection Jammer system, many people consider the final "D" variant to be the definitive F-14 Tomcat. This limited edition **kit features** distinctive purple plastic molding and licensed markings representing a "Cherry Blossom" trim scheme as it appears in the best-selling "Ace Combat 6" flight simulator by Bandai Namco®.

51991/SP291 HSGS1991 (Limited Edition) Total parts: 176 Skill level 3

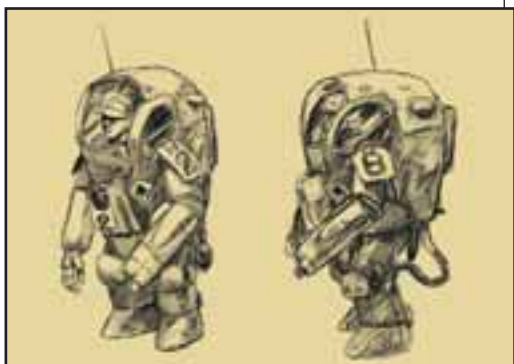


1/72 SCALE U.S. AIRCRAFT WEAPONS ASSORTMENT IX

Nine new joint direct attack munitions and targeting pods.

Today's military aircraft use a wide range of weapons to support multiple roles in modern warfare. One such weapon, the Israeli-designed AN/AAQ-28 LITENING targeting pod, has been used by numerous U.S. combat aircraft. Joint Direct Attack Munitions (JDAMs), like GBU-31 and GBU-38, help convert unguided bombs into all-weather "smart" bombs. **Kit assortment features** nine newly tooled U.S. aircraft weapons, including the AN/AAQ-28 LITENING AT, the AN/AAQ-33 SNIPER XR, the GBU-31 (V) 3, the GBU-38 and AN/AAQ-13. Decals and painting options included.

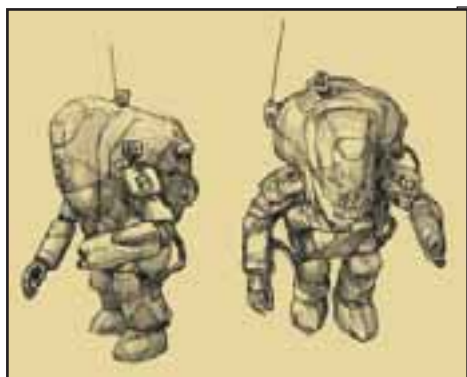
35114/X72-14 HSGS3514 Total parts: 81 Skill level 3



1/35 SCALE P.K.A. AUSF. G GUSTAV KIT COMBO "Suit up" for intergalactic battle.

The sci-fi series "Maschinen Krieger ZbV 3000" was created by artist Kow Yokoyama in the early 1980s and appeared in the popular magazine "Hobby Japan." The series was inspired by armor and aircraft from both World Wars, as well as films such as "Blade Runner" and "Star Wars.®" "Maschinen Krieger" continues to have a devoted cult following, thanks to its celebrated return to "Hobby Japan" magazine in 2009. This limited edition **kit combo features** four marking options for the Strahl Defence Force.

64102 HSGS4102 (Limited Edition) Total parts (x 2): 67 Skill level 3



1/35 SCALE P.K.A. AUSF. M MELUSINE KIT COMBO Complete your "Maschinen Krieger ZbV 3000" collection!

Kow Yokoyama drew upon his love of WWII aircraft and American sci-fi to create his celebrated cult favorite, "Maschinen Krieger ZbV 3000." Among his most interesting designs are his Powered Armor Suits, which are similar to those found in the popular comic book "Iron Man®" and Robert Heinlein's classic 1959 novel "Starship Troopers." Yokoyama's comic continues to draw in new readers, thanks to its exciting stories and universal appeal. This limited edition **kit combo features** markings for the Strahl Defence Force.

64103 HSGS4103 (Limited Edition) Total parts (x 2): 49 Skill level 3

1/32 SCALE MESSERSCHMITT ME 163B KOMET "EKDO 16"

Wolfgang Späte's signature aircraft.

After flying Bf 109s with JG 54, Major Wolfgang Späte headed a testing program for the rocket-powered Me 163 Komet. Späte's Komet had a distinctive red paint scheme which resembled the Red Baron's famous Fokker Dr. I. While other pilots would have been flattered by the comparison, Späte personally thought it was too ostentatious. This limited edition **kit features** new tail fuselage teardrop-type cover parts (left and right) and the following marking option: 1. Luftwaffe EKdo 16, Hauptmann Wolfgang Späte, Code: PK & QL, May 1944.

08213 HSGS8213 (Limited Edition) Total parts: 61 Skill level 3



1/48 SCALE P-51D MUSTANG "TUSKEGEE AIRMEN" The 332nd Fighter Group's "Red-Tail Angel."

Composed primarily of pilots from the celebrated Tuskegee Airmen, the 332nd Fighter Group had one of WWII's most impressive combat records. The Allies gave them the nickname, "Red-Tail Angels," because the tails on their P-51 Mustangs were distinctively painted crimson. The unit received a Distinguished Unit Citation in March, 1945 for successfully completing the longest bomber escort mission of WWII. This limited edition **kit features** two marking options: 1. U.S.A.A.F. 332FG/15AF, 99FS, Code: A13 Italy, November 1944 and 2. U.S.A.A.F. 332FG/15AF, 301FS, Lt. Charles White, Code: 42 Italy, January 1945.

09947 HSGS9947 (Limited Edition) Total parts: 118 Skill level 3

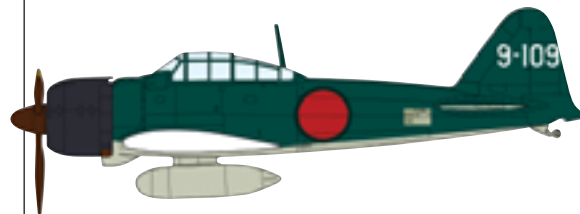


1/48 SCALE MITSUBISHI A6M5 ZERO FIGHTER TYPE 52 "EARLY VERSION"

Japan's answer to the F6F Hellcat.

Mitsubishi created the A6M5 Type 0 Model 52 in response to the firepower and speed of the Allies' F6F Hellcat and F4U Corsair. Featuring a top speed of 340 mph (540 km/h), the A6M5 could reach an impressive altitude of 26,250 feet (8,000 m) in just 9 minutes and 57 seconds. This limited edition **kit features** new cowling parts, as well as two marking options: 1. I.J.N. 204th N.F.G., Code: 9-109 Rabaul, January 1944 and 2. I.J.N. 204th N.F.G., Code: 9-151 Rabaul, 1943.

09948 HSGS9948 (Limited Edition) Total parts: 70 Skill level 3



AMT® 1/25 Scale USA-1 Monster Truck Special Edition Lunchbox

The 1980s' most memorable monster masher.

The USA-1 was loved by millions of monster truck fans throughout the 1980s and early 1990s. The USA-1 became an instant celebrity following 1983's first nationally televised monster truck race, in which it competed against Bigfoot®. In 1988, the USA-1 won the TNT® Monster Truck Racing Series championship. Although this series folded in the early '90s, the USA-1 is still a fan favorite today. **Kit features** a supercharged engine, huge black vinyl tires, multiple chrome and clear parts, full-color waterslide decals and collectible tin lunchbox packaging with USA-1 graphics.

AMT740 AMTS0740 Skill level 2

Plastic Models





Airfix® 1/48 Scale Spitfire Mk. XII

History's first Griffon-powered Spitfire.

The Spitfire Mk. XII entered service with the RAF in October 1942. Initially, only two squadrons were equipped with history's first Griffon-powered Spitfire. The Mk. XII's superb low-altitude performance made it ideal for shooting down V-1 flying bombs. Many Mk. XII pilots also became celebrated heroes after scoring multiple Fw 190 and Bf 109-G "kills." **Kit features** two marking options: 1. Lt. Donald Smith (RAAF), No. 41 Sqn., RAF, Tangmere, U.K., October 1943 and 2. Sqn. Leader R.H. Harries, No. 91 (Nigeria) Sqn., RAF, Hawkinge, U.K., May 1943.

05117 ARXS5117 Total parts: 98 Skill level 2 Length: 8 in (202 mm)
Wingspan: 8.1 in (207 mm)



Italeri® 1/72 Scale F4U-7 Corsair

The French Navy's very own F4U-7.

Vought introduced the prototype for what was to be their final Corsair variant, the F4U-7, in July 1952. Originally bought by the U.S. Navy, F4U-7s were given to French Navy's Aéronavale via the U.S. Military Assistance Program. The French flew 163 of these aircraft in all, mostly during the Algerian War and the First Indochina War in the late 1950s. During 1956's seizure of the Suez Canal, French F4U-7s were decorated with distinctive yellow-and-black stripes. **Kit features** recessed panel details and marking options for four aircraft.

551313 ITAS1313



MPC® 1/8 Scale Barnabas the Vampire from Dark Shadows

Back from the undead after 40 years.

"Dark Shadows," which aired from 1966-1971, starred Jonathan Frid as the lovesick vampire Barnabas Collins. While Barnabas wasn't the gothic soap opera's original main character, the program's ratings skyrocketed following his introduction. The show's popularity endures today, thanks to reruns and DVD collections of the classic T.V. show. DVD sales have proved so popular that a 2012 film version is being produced. Tim Burton's revamp will star Johnny Depp as Barnabas. **Kit features** black and glow-in-the-dark plastic molding, flexible arms, optional glow-in-the-dark rats and bats, as well as authentic 1970s kit packaging.

MPC757 MPCS0757 Skill level 2 Height: 8.5 in (216 mm)



Pegasus Hobbies 1/18 Scale My Favorite Martian Uncle Martin & Spaceship

Everyone's favorite Martian Uncle is back!

The classic sitcom "My Favorite Martian" premiered in September 1963 and starred Bill Bixby and Ray Walston. The show aired for three seasons. An animated spin-off, "My Favorite Martians," ran on CBS from 1973-1975. A live-action feature film version was released in 1999, which starred Jeff Daniels and Christopher Lloyd in the Bixby and Walston roles, respectively. **Kit features** a figure of "Uncle Martin" and his spaceship with opening doors, a detailed interior and nameplate. The spaceship was designed with input from James Hulsey, the original series' art director.

9012 PGHS9012 Length: 7 in (178 mm)



Polar Lights® 1/25 Scale 1966 Batmobile™ Snap Kit

Just like in the classic 1960s series!

Fans familiar with the 1960s series "Batman" will, no doubt, recognize the iconic 1966 Batmobile. However, not all fans know the following factoid. Designer George Barris had only three weeks to transform the rare 1959 Lincoln Futura concept car into a crime-fighting hot rod. The end result became an instant pop culture phenomenon that continues to attract large car show crowds to this very day. **Kit features** easy snap assembly, a detailed black plastic body with chrome and clear accents, metal axles and figures of Batman® and Robin®.

P01824 PLLS0824 Skill level 2

SCX® COMPACT 1/43 SCALE GT TOURING CAR CHAMPIONSHIP

Authentic German Touring Car Championship (DTM) action.

- Sized “just right” for ages 4 and up!
- Set includes one Audi® A4 DTM racer, one AMG Mercedes® C-Klasse DTM racer, two controllers and one transformer.
- Track layout consists of six 90° curves, one terminal track, one short 4.5" (114 mm) straight, four long 13.5" (342 mm) straights, one crossover and eight red barriers.
- Track length: 13' (4 m). Track dimensions: 4'9" x 2'6" (150 x 80 cm).



SCXW0104
Compact 1/43 Scale GT Touring Car Championship



Long story short...

This latest, ready-to-run entry in the SCX Compact line is an ideal way to get new slot car racers interested in the hobby!

SCX® COMPACT 1/43 SCALE GT RACING SERIES

High-speed GT racing – in 1/43 scale!

- Designed for drivers ages 4 and up.
- Set includes two Porsche® 911 GT3 Cup racers, two controllers, one transformer and one lap counter.
- Complete track layout consists of one 4.5" (114 mm) terminal track, three 13.5" (342 mm) straights, two 13.5" (342 mm) changeovers, three 9" (228 mm) straights, two 4.5" (114 mm) straights, four decorated 45° curves, ten decorated 90° curves and four decorated 45° outer curves.
- Track length: 25' (7.5 m). Track dimensions: 6'7" x 3'7" (203 cm x 113 cm).



SCXW0105
Compact 1/43 Scale GT Racing Series



Long story short...

Young and old racers alike will agree: the GT Racing Series set is a winner!

SCX® 1/32 SCALE C1 GT SPA-FRANCORCHAMPS

Race the Formula One Belgian Grand Prix at home!

- Easy to assemble, with an extra-wide, digital-ready track!
- Ready-to-run set comes with two vehicles (a Chevrolet® Corvette® C6R™ and an Aston Martin® DBR9), two controllers and a transformer.
- Complete track layout includes eight standard curves, two standard 13.8" (350 mm) straights, two digital-compatible track pieces and one terminal track.
- Track length: 11'5" (3.5 m).
Track dimensions: 4'8" x 2'4" (148 cm x 82 cm).
- All New Universal Track System!



SCXW5100
1/32 Scale C1 GT
Spa-Francorchamps



Long story short...

Race like your old favorite, Speed Racer, on the over & under, snap-lock racing track.

LIONEL® BOY SCOUTS OF AMERICA 0-8-0 FREIGHT SET – 0 SCALE

So complete, it comes with its own merit badge!

- 0-8-0 steam locomotive features include transformer-controlled forward/reverse/neutral operation, an operating steam whistle, a puffing smoke unit, engineer/fireman figures and more.
- 40" x 60" (1,016 mm x 1,524 mm) FasTrack® layout includes three straight sections, eight curved sections, a terminal section and an uncoupling section.
- The bulkhead flatcar features two palletized wood loads and three wheel sets. The derrick car includes a movable boom and operating winch. The BSA Oath boxcar features opening doors, and the work caboose boasts interior illumination.
- All rolling stock includes operating couplers. All except the caboose* feature diecast metal sprung trucks.
(*Caboose includes diecast metal trucks).
- Set also comes with a CW-80 transformer, smoke fluid and an official BSA/ Lionel collector's patch.



LNLU0161
Boy Scouts of America 0-8-0
Freight Set – 0 Scale



Long story short...

This latest Lionel set is the most fun you'll have riding the rails this year – scouts' honor!

KIDKRAFT® WOODEN TRAIN SETS

Real railroad fun for the little ones.



www.gpdealer.com

- Choose the 38-piece *Figure-8*, the 61-piece *Bucket Top Mountain* or the 75-piece *Farm Train*.
- Lightweight, kid-proof construction ensures endless enjoyment.
- All feature smiling townspeople, decorative buildings and more, molded from colorful plastic.
- All three sets are compatible with Brio® and Thomas & Friends® wooden train sets.

Figure-8



KKTU7826
17826

\$ _____

Bucket Top Mountain



KKTU7822
17822

\$ _____

Farm Train



KKTU7827
17827

\$ _____

Long story short...

Brightly colored pieces and exceptional details make KidKraft Wooden Train Sets perfect for pint-sized train enthusiasts.



MDPU9035
51' Flat Car Assortment – HO Scale

Model Power® 51' Flat Car Assortment – HO Scale

Easily expand your 51' flat car collection!

- Exclusive to Great Planes®.
- Assortment includes a TTX® 51' flat car with twin Sealand® ACL 20' containers and an ATSF 51' flat car with a tractor and 34' trailer.
- Set also features four 51' flat cars with trailers, operating doors and diecast frames. Roadnames Phillips 66®, Sunkist® Southern Pacific and Mason Dixon.



YOMH0855
Hot Shot Yo-Yo

Yomega® Hot Shot Yo-Yo

Engineered for extra "spin."

- Constructed of anodized aluminum and polycarbonate plastic.
- A rubber-based return system results in smooth string tricks. A two-spacer gap system offers a choice of "narrow" or "wide" settings.
- Includes a "Yomega Mania" DVD and extra string. Ages 8 and up.



YOMH0875
Maverick Yo-Yo

Yomega® Maverick Yo-Yo

Winged shape makes tricks a cinch.

- Features all-aluminum construction, a weighted perimeter, a stainless steel ABEC-5 bearing and laser-etched print.
- A rubber-based return system results in smooth, steady tricks. A two-spacer gap system provides players with "narrow" and "wide" settings.
- Includes a trick book, a "Yomega Mania" DVD and extra string.

Estes® Xarconian Cruiser™ Rocket Kit

Meet the future of intergalactic defense.

- Features laser-cut balsa fins and an 18 in. (46 cm) recovery parachute.
- Requires standard engines, a launch system, a launch pad, igniters and recovery wadding, plus construction and finishing supplies.
- 22.7 in. (57.6 cm) tall. Max. Altitude: 525 feet (160 m). Skill level 5.



ESTT3223
Xarconian Cruiser™ Rocket Kit

MAKE ESTES® ROCKETS PART OF SUMMER FUN PLANS!

LAUNCH SETS



Launch Sets Include

- Rocket
- Launch Pad
- Launch Controller

Riptide Launch Set

Sharp looks and Ready to Fly convenience make the Riptide a great choice for beginners.

ESTT1403

Ready to Fly **RTF**



Tandem-X Launch Set

It's two rockets in one set, with the nearly 3 foot tall Amazon and the high-flying Crossfire ISX!

ESTT1469

Easy to Assemble **E2X**

Skill Level **1**



Alpha III Launch Set

An all-time Estes classic, and the first in the E2X (Easy to Assemble) line.

ESTT1427

Easy to Assemble **E2X**



Taser Launch Set

A "stunning" design that builds quickly and flies up to 1000 feet!

ESTT1491

Easy to Assemble **E2X**



Flash Launch Set

A stylish design that literally snaps together, so your initial launch is about 30 minutes away!

ESTT1478

Easy to Assemble **E2X**



HeliCAT Launch Set

A distinctive helicopter nose cone recovery makes the HeliCAT a favorite among rocketeers!

ESTT1465

Easy to Assemble **E2X**

This summer take along Estes Rockets

YOUR FAMILY'S



ROCKET KITS

Great for:

Picnics

Outdoor activities

Family get togethers

"Stay-cations"



Sky Writer Kit-E2X

A one-of-a-kind design that replicates a No. 2 wooden pencil.

ESTT1260

Easy to Assemble **E2X**



Nova Payloader Kit-Skill Level 1

Features a clear 4" payload section that holds items from an action figure to gumballs.

ESTT1960

Skill Level **1**



Hi-Flier Kit-Skill Level 1

For high performance the Hi-Flier is tops, with a projected altitude of over 1600 feet!

ESTT2178

Skill Level **1**



Baby Bertha Kit-Skill Level 1

A miniature (12.75" tall) version of one of the most popular Estes rockets of all time!

ESTT1261

Skill Level **1**



EggsCalibur Kit-Skill Level 2

The unique cushioned payload section and two parachutes let you send an egg into space and return it intact!

ESTT2123

Skill Level **2**

for family fun!

TURN HERE FOR RADIO CONTROL PRODUCTS

GREAT



NEWS[®]

T PLANES[®]

D I S T R I B U T O R S