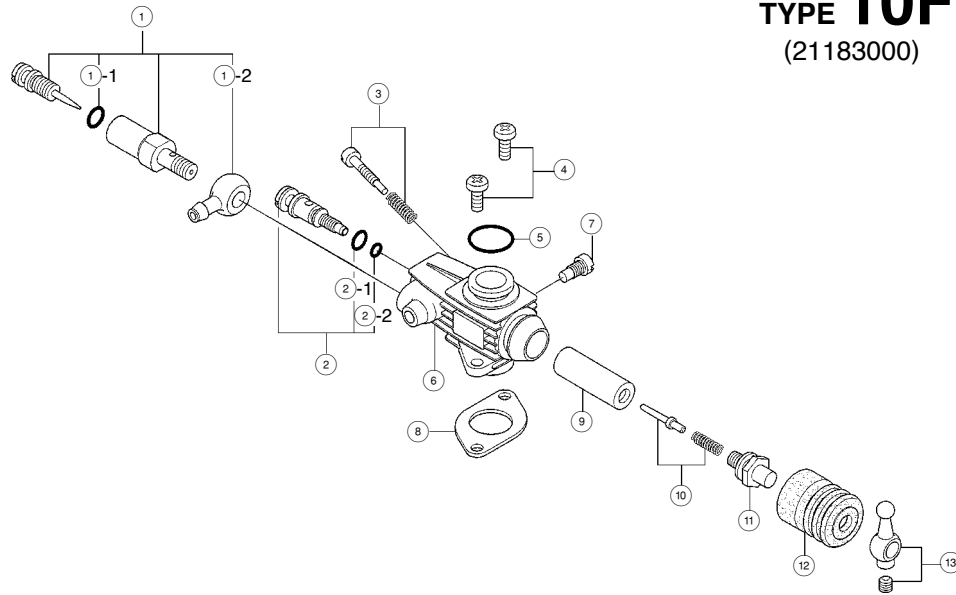


# TYPE 10F

(21183000)



For 12/15LD, LD-X, 12/15LD(T), LD-X(T)

No.	Code No.	Description
①	2 1481 900	Needle Valve Assembly
①-1	2 7881 820	"O" Ring (2pcs.)
①-2	2 1481 950	Universal Nipple No.12
②	2 1285 600	Mixture Control Valve Assembly
②-1	4 6066 319	"O" Ring (L) (2pcs.)
②-2	2 2781 800	"O" Ring (S) (2pcs.)
③	2 1285 640	Throttle Stop Screw
④	2 1183 700	Carburettor Fixing Screw
⑤	2 1181 837	"O" Ring
⑥	2 1183 100	Carburettor Body
⑦	2 1285 220	Slide Valve Guide Screw
⑧	2 1165 000	Thermo Insulator
⑨	2 1285 200	Slide Valve
⑩	2 1285 400	Metering Needle Assembly
⑪	2 1285 210	Slide Valve Extension
⑫	2 1285 520	Dust Cover
⑬	2 3818 410	Ball Link No.2