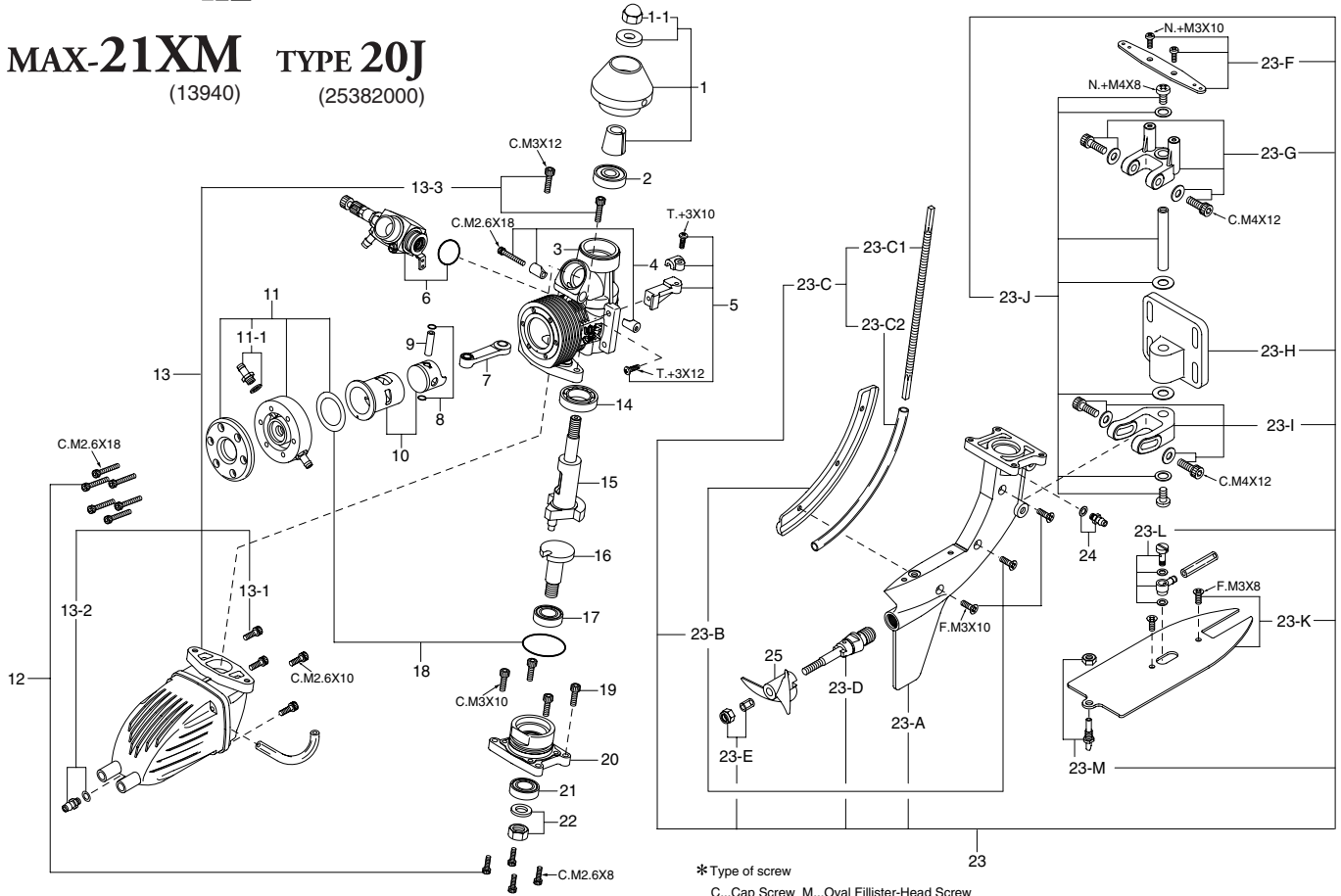


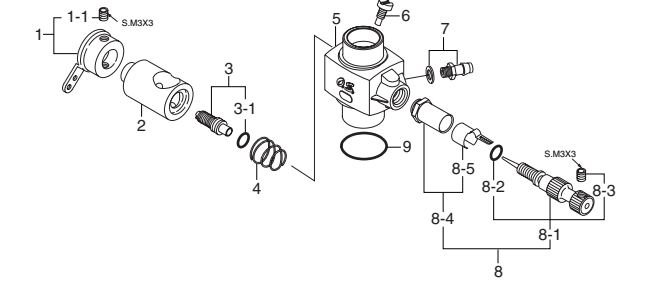
## MAX-21XM TYPE 20J

(13940) (25382000)



No.	Code No.	Description
1	71802100	Flywheel Assembly (No.2J)
1-1	27721700	Flywheel Nut
2	41614000	Crankshaft Ball Bearing ( Outer )
3	23851000	Crankcase
4	23981700	Carburetor Retainer
5	71532000	Throttle Linkage Bracket
6	25382000	Carburetor Complete ( Type 20J )
7	23805000	Connecting Rod
8	23817000	Piston Pin Retainer ( 2pcs. )
9	23906000	Piston Pin
10	23803010	Cylinder & Piston Assembly
11	23841000	Water-Cooled Head Assembly
11-1	24025923	Nipple No.2
12	23913000	Screw Set
13	23875000	E-2050 Silencer
13-1	23875300	Silencer Assembly Screw (4pcs.)
13-2	22681953	Nipple No.1
13-3	23875400	Silencer Retaining Screw ( 2pcs. )
14	23930000	Crankshaft Ball Bearing ( Inner )
15	23852000	Crankshaft
16	23852100	Power Take-Off Shaft
17	22631019	PTO Shaft Ball-Bearing ( Inner )
18	23814010	Gasket Set
19	23871130	Outboard Unit Retaining Screw (4pcs.)
20	23861000	Crankcase Rear Housing
21	22631019	PTO Shaft Ball-Bearing ( Outer )
22	23852200	PTO Shaft Nut
23	23871000	Outboard Unit Assembly
23-A	23871100	Lower Housing and Skeg
23-B	23871200	Side Plate
23-C	23873010	Flexible Drive Assembly
23-C1	23873000	Flexible Drive Shaft
23-C2	23873100	Flexible Drive Shaft Sleeve
23-D	23871400	Propeller Shaft Assembly
23-E	23810000	Propeller Nut
23-F	23874500	Steering Arm
23-G	23874100	Upper Swivel Bracket
23-H	23874000	Transom Mounting Plate
23-I	23874200	Lower Swivel Bracket
23-J	23874300	Swivel/Tilt Assembly

No.	Code No.	Description
23-K	23871300	Cavitation Plate
23-L	45571100	Universal Nipple L3.5
23-M	23871700	Cooling Water Pickup
24	22681953	Nipple No.1
25	23870000	Marine Propeller
	71608001	Glowplug No.8



No.	Code No.	Description
1	24981405	Throttle Lever Assembly
1-1	26381501	Set-screw
2	25381203	Carburetor Rotor
3	26781309	Mixture Control Valve
3-1	24881824	" O " Ring (2pcs.)
4	26781506	Rotor Spring
5	25382100	Carburetor Body
6	25381220	Rotor Guide Screw
7	22681953	Fuel Inlet (No.1)
8	27881900	Needle Valve Assembly
8-1	24981959	Needle Assembly
8-2	24981837	" O " Ring (2pcs.)
8-3	26381501	Set-screw
8-4	27381940	Needle Valve Holder Assembly
8-5	26711305	Ratchet Spring
9	29015019	Carburetor Rubber Gasket

### O.S. GENUINE PARTS & ACCESSORIES

Code No.	Description
79871030	M2.6x10 Cap Screw Set (10pcs.)
71521000	Long Socket Wrench With Plug Grip

The specifications are subject to alteration for improvement without notice.