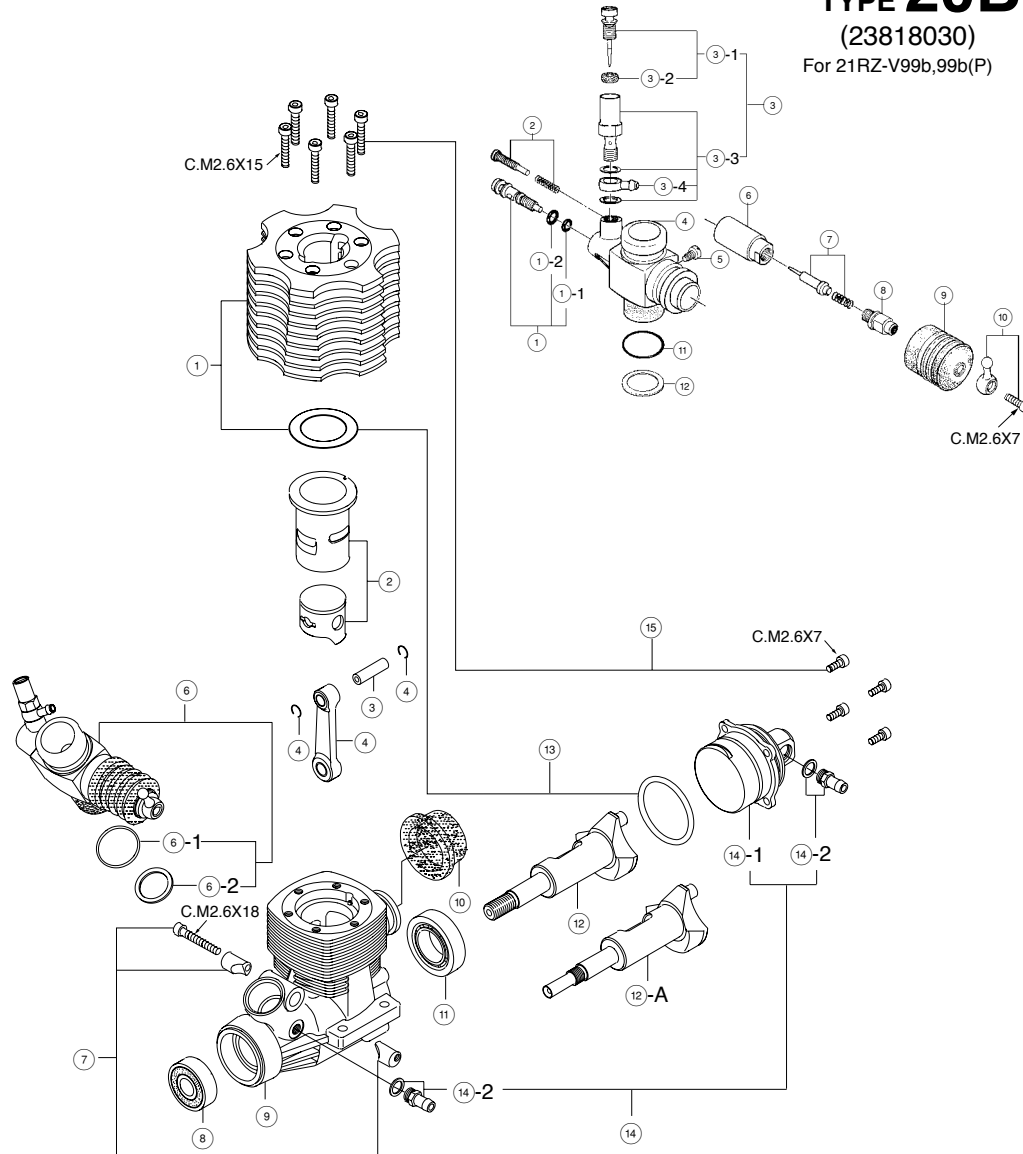


TYPE 20B

(23818030)
For 21RZ-V99b,99b(P)



MAX-21RZ-V99b
(13844)
MAX-21RZ-V99b(P)
(13845)

*Type of screw

C...Cap Screw B...Binding Head Screw M...Oval Fillister-head Screw F...Flat Head Screw
N...Round Head Screw S...Set Screw

CARBURETTOR PARTS LIST

No.	Code No.	Description
①	2 3818 180	Mixture Control Valve Assembly
①-1	4 6066 319	"O" Ring(L) (2pcs.)
①-2	2 2781 800	"O" Ring(S) (2pcs.)
②	2 3818 500	Throttle Stop Screw
③	2 3618 190	Needle Valve Assembly
③-1	2 3618 197	Needle
③-2	4 6066 319	"O" Ring for needle
③-3	2 3618 194	Needle Holder Assembly
③-4	2 3818 176	Universal Nipple No.9
④	2 3818 111	Carburettor Body
⑤	4 5581 820	Slide Valve Guide Screw
⑥	2 3818 251	Slide Valve
⑦	2 3818 320	Metering Needle Assembly
⑧	2 3818 220	Slide Valve Extension
⑨	2 2884 220	Dust Cover
⑩	2 3818 400	Ball Link No.1
⑪	2 9015 019	Carburettor Rubber Gasket
⑫	2 3818 190	Carburettor Sealing Washer

ENGINE PARTS LIST

No.	Code No.	Description
①	2 3704 050	Heatsink Head
②	2 3703 030	Cylinder & Piston Assembly
③	2 3906 000	Piston Pin
④	2 3817 000	Piston Pin Retainer(2pcs.)
⑤	2 3705 000	Connecting Rod
⑥	2 3818 030	Carburettor Complete (Type 20B)
⑥-1	2 9015 019	Carburettor Rubber Gasket
⑥-2	2 3818 190	Carburettor Sealing Washer
⑦	2 3981 700	Carburettor Retainer
⑧	2 3731 000	Crankshaft Ball Bearing (Front)
⑨	2 3701 030	Crankcase
⑩	2 2826 140	Exhaust Seal Ring
⑪	2 3730 000	Crankshaft Ball Bearing (Rear)
⑫	2 3702 000	Crankshaft (for 21RZ-V99b)
⑫-A	2 3702 020	Crankshaft (for 21RZ-V99b(P))
⑬	2 3714 000	Gasket Set
⑭	2 3707 050	Intake Chamber Assembly
⑭-1	2 3707 060	Intake Chamber
⑭-2	2 4025 923	Nipple No.2
⑮	2 2447 005	Screw Set
	7 1605 100	Glow Plug A5
	2 3814 000	Gasket Set
	2 2884 250	Dust Cap Set(3pcs. □18,□16,□3)
	7 2411 000	Super Air Cleaner 201(W/two filter elements)
	7 2411 020	201 Filter Elements (4pcs.)
	7 2411 050	Element Plate Set, Comprising:
	7 2411 010	Center Screen
	7 2411 040	Intake Elbow
	7 2411 030	Center Tube
*	7 2106 030	Tuned Silencer T-2030
*	7 2106 300	Super Joint Tube21
*	7 2105 337	Silicone Tube Assembly (H)
*	7 2105 346	Silicone Tube (H)
*	7 1608 001	Glow Plug No.8
*	7 1530 200	Crankshaft Clamp 1521
*	7 1521 000	Long Socket Wrench (with plug grip)

* Optional extra parts