



Replacement Parts

| Stock # | Description | Quantity |
|------------------------|------------------------------------|-------------------------|
| DTXC1523 | 5 x 8mm Bearing | 69 x2pcs |
| DTXC1569 | 6 x 12mm Bearing | 24 x2pcs |
| DTXC1582 | 8 x 12mm Flanged Bearing | 93 x2pcs |
| DTXC1585 | 8 x 16mm Bearing | 22 x2pcs |
| DTXC2415 | Antenna Tube | 111 x1pc |
| DTXC6102 | Air Filter | 109, 110, 114, 115 x1pc |
| DTXC6107 | Air Filter Elements | 114 x3pcs |
| DTXC6265 ST | Ball End Small | 50 x4pcs |
| DTXC6270 ST | Ball End Large | 98 x4pcs |
| DTXC6430 ST | Body Mount Posts | 12 x2pcs |
| DTXC6440 | Body Clip | 130 x6pcs |
| DTXC6480 | Painted Body (Green) | x1pc |
| DTXC6481 | Painted Body (Blue) | x1pc |
| DTXC6482 | Painted Body (Red) | x1pc |
| DTXC6483 | Painted Body (Black) | x1pc |
| DTXC6484 | Painted Body (Dark Blue) | x1pc |
| DTXC6485 | Painted Body (Purple) | x1pc |
| DTXC6705 | Brake Cam | 40 x1pc |
| DTXC6714 | Brake Disk | 83 x1pc |
| DTXC6730 | Brake Lever | 112 x2pcs |
| DTXC6735 | Brake Pads | 133 x2pcs |
| DTXC6740 | Brake Rod | 103 x2pcs |
| DTXC6753 | Brake Shoe Plates | 82 x2pcs |
| DTXC6855 ST | Bumper Front | 6 x1pc |
| DTXC6857 ST | Bumper / Handle Rear | 7 x1pc |
| DTXC7011 | Chassis Plate (3mm) | 30 x1pc |
| DTXC7020 | Chassis Plate Upper | 8 x1pc |
| DTXC7050 ST | Center Differential Mount Front | 87 x1pc |
| DTXC7055 ST | Center Differential Mount Rear | 84 x1pc |
| DTXC7110 | Clutch Bearing Spacer | 68 x1pc |
| DTXC7117 | Clutch Drum | 88 x1pc |
| DTXC7132 | Clutch Bell 2-Speed | 66 x1pc |
| DTXC7133 | Clutch Bell 2-Speed (16T) | 67 x1pc |
| DTXC7159 | Clutch Shoe | 54 x2pcs |
| DTXC7165 | Clutch Spring | 65 x1pc |
| DTXC7167 | Clutch Spring 2-Speed | 94 x1pc |
| DTXC7180 | Clutch Stopper 2-Speed | 95 x1pc |
| DTXC7321 | Decal | x1pc |
| DTXC7360 | Differential Case Set | 33, 36 x1pc |
| DTXC7365 | Differential Gear Shaft | 35 x4pcs |
| DTXC7367 | Differential Joint (Front / Rear) | 21 x1pc |
| DTXC7370 | Center Differential Joint (Front) | 44 x1pc |
| DTXC7371 | Center Differential Joint (Rear) | 81 x1pc |
| DTXC7375 | Differential Planetary Gear | 32 x2pcs |
| DTXC7384 | Differential Pinion Gear (10T) | 23 x1pc |
| DTXC7385 | Differential Satellite Gear | 34 x4pcs |
| DTXC7394 | Differential Ring Gear (50T) | 31 x1pc |
| DTXC7460 | Dogbone Center Rear | 80 x1pc |
| DTXC7467 | Dogbone Rear | 16 x1pc |
| DTXC7468 | Dogbone Center Front | 97 x1pc |
| DTXC7473 | Dogbone Universal Front | 14, 15 x2pcs |
| DTXC7506 | Drive Gear Assembly (Double Shift) | 75, 76 x1pc |
| DTXC7510 | Drive Hub with Wheel Nut | 29, 39 x1pc |
| DTXC7601 | Exhaust Coupler | 54 x1pc |
| DTXC7605 | Engine Mount Blocks | 58, 59 x1pc |
| DTXC7656 | Engine Clutch Nut | 63 x1pc |
| DTXC7705 | Flywheel | 61 x1pc |
| DTXC7745 | Flywheel Collet | 60 x1pc |
| DTXC7755 | Flywheel Spacer | 62 x1pc |
| DTXC7805 | Fuel Tank 125cc | 9 x1pc |
| DTXC7892 ST | Gearbox Mount Double Shift (Front) | 86 x1pc |
| DTXC7898 ST | Gearbox Bulkhead Set | 2, 3 x1pc |
| DTXC7906 ST | Gear Case Double Shift | 70, 71 x1pc |
| DTXC8010 | Hinge Pin Inner | 25 x2pcs |
| DTXC8020 | Hinge Pin Upper Inner | 107 x2pcs |
| DTXC8060 ST | Hub (Front / Rear) | 13 x2pcs |
| DTXC8087 | Idler Gear Double Shift | 73 x1pc |
| DTXC8088 | Idler Gear Shaft Double Shift | 74 x1pc |
| DTXC8091 | Inner Clutch 2-Speed | 96, 0 x1pc |
| DTXC8205 | King Pin Set Rear | 108 x4pcs |
| DTXC8247 | Main Shaft Double Shift | 72 x1pc |
| DTXC8250 | Manifold (for Pull Start) | 55 x1pc |
| DTXC8257 | Manifold Gasket | 56 x1pc |

| Stock # | Description | Quantity |
|------------------------|-----------------------------------|--------------------------|
| DTXC8275 | Muffler | 53 x1pc |
| DTXC8307 | Pivot Ball | 27 x2pcs |
| DTXC8308 | Pivot Ball Nut | 28 x2pcs |
| DTXC8309 | Pivot Ball Wrench | x1pc |
| DTXC8340 | Pressure Fitting | 57 x1pc |
| DTXC8391 ST | Radio Box / Servo Tray | 10, 11 x1pc |
| DTXC8480 | Rod Collar (2mm) | 104 x2pcs |
| DTXC8490 | Rod Connector | 85 x1pc |
| DTXC8505 | Rod Spacer Rear Toe-In | 18 x2pcs |
| DTXC8690 | Engine Mount Screws | R x4pcs |
| DTXC8861 ST | Servo Saver Arm Left | 43 x1pc |
| DTXC8866 ST | Servo Saver Arm Upper Right | 42 x1pc |
| DTXC8871 ST | Servo Saver Arm Right Upper | 100 x1pc |
| DTXC8875 | Servo Saver Rod Connector | 51 x1pc |
| DTXC8880 | Servo Saver Post | 47 x2pcs |
| DTXC8883 | Servo Saver Post Sleeve | 46, 48 x1pc |
| DTXC8887 | Servo Saver Rod U-Shaped | 41 x1pc |
| DTXC8890 | Servo Saver Rod Collar | 45 x1pc |
| DTXC8895 | Servo Saver Spring | 52 x1pc |
| DTXC8903 | Shaft Wheel Rear | 17 x1pc |
| DTXC8949 | Shifting Gear Double Shift | 77 x1pc |
| DTXC8961 | Shifter Rod Double Shift | 78 x1pc |
| DTXC8970 | Shifting Linkage Rod | 99 x1pc |
| DTXC9006 | Shock Set Assembled | x2pcs |
| DTXC9050 | Shock Diaphragm | 118 x2pcs |
| DTXC9055 | Shock Dust Seals | 121 x2pcs |
| DTXC9057 | Shock Ends | 127 x2pcs |
| DTXC9060 | Shock Oil Seals | 120 x2pcs |
| DTXC9070 | Shock Piston | 122 x2pcs |
| DTXC9102 | Shock Bushing | 102 x2pcs |
| DTXC9135 | Shock Shaft | 123 x2pcs |
| DTXC9057 | Shock Ends | 124, 126, 127, 128 x2pcs |
| DTXC9160 | Shock Body with Cap | 117, 119 x2pcs |
| DTXC9190 | Shock Tower | 1 x1pc |
| DTXC9240 | Shock Spring | 92 x2pcs |
| DTXC9392 | Steel Spur Gear (50T) | 30 x1pc |
| DTXC9393 | Steel Spur Gear (44T) | 89 x1pc |
| DTXC9414 | Spur Gear Mount with One-Way | 92 x1pc |
| DTXC9470 | Steering Joint Pin | 113 x2pcs |
| DTXC9530 ST | Suspension Arm Front / Rear Lower | 4 x2pcs |
| DTXC9570 | Steering Rod | 106 x1pc |
| DTXC9650 | Throttle Rod | 116 x1pc |
| DTXC9691 ST | Tie Rod Joint (Male) | 19 x2pcs |
| DTXC9692 ST | Tie Rod Joint (Female) | 20 x2pcs |
| DTXC9693 | Tie Rod Turnbuckle | 49 x2pcs |
| DTXC9695 | Throttle Rod Spring | 79 x2pcs |
| DTXC9701 | Tire | 37 x2pcs |
| DTXC9744 ST | Upper Arm Front / Rear | 5 x2pcs |
| DTXC9766 | Washer for 50T Gear | 91 x1pc |
| DTXC9800 | Wheel Nuts | 39 x4pcs |
| DTXC9826 | Turnbuckle Rear Toe-In | 101 x2pcs |
| DTXC9859 | Wheel (Chrome) | 38 x2pcs |
| DTXC9901 | Wrench | x1pc |
| DTXZ1093 | Instruction Manual | x1pc |

Optional Parts

| | | |
|----------|-----------------------------|------|
| DTXC7154 | Clutch Shoes Racing (3) | |
| DTXC7170 | Clutch Spring Racing (3) | |
| DTXC7473 | Rear Universal Dogbone Axle | x1pc |
| DTXC6486 | Body (Unpainted) | x1pc |
| DTXC9731 | Titanium Shock Shaft (2) | |

To order replacement parts or to send your model in for repairs covered under warranty, you should send your model to DuraTrax's authorized U.S. repair facility:

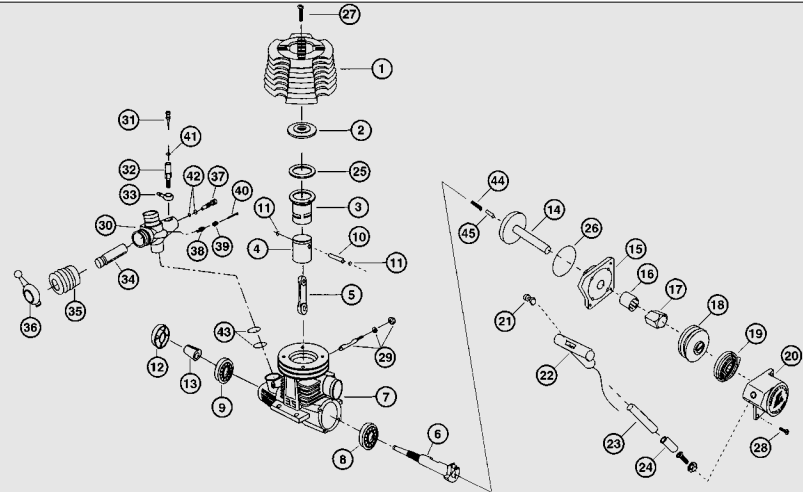
Hobby Services
1610 Interstate Drive
Champaign, Illinois 61822
Attn. Service Department

Phone: (217) 398-0007 9:00 A.M. - 5:00 P.M. Central Time M-F

E-Mail: hobbyservices@hobbico.com

ST indicates Stress-Tech™ part

TORQ .21 EXPLODED VIEW & PARTS LIST



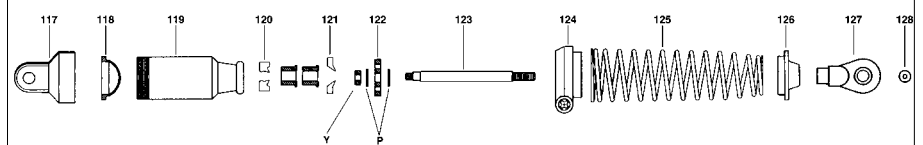
Replacement Parts

| Stock # | Description | Quantity | Stock # | Description | Quantity |
|----------|------------------------------|-----------|----------|------------------------|---------------------------------|
| DTXG0355 | Front Bearing | 9 x1pc | DTXG0601 | Head Screws | 27 x4pcs |
| DTXG0365 | Rear Bearing | 8 x1pc | DTXG0606 | Idle Needle | 37 x1pc |
| DTXG0405 | Carburetor Dust Cover | 35 x1pc | DTXG0607 | O-Ring for Idle Needle | 42 x2pcs |
| DTXG0410 | Carburetor Body | 30 x1pc | DTXG0617 | Needle Socket | 32 x1pc |
| DTXG0445 | Carburetor Complete | x1pc | DTXG0625 | Needle Valve | 31 x1pc |
| DTXG0460 | Carburetor Retainer with Nut | 29 x1pc | DTXG0630 | Needle O-Ring | 41 x1pc |
| DTXG0467 | Carburetor O-Ring | 43 x1pc | DTXG0635 | One Way Bearing | 16, 17 x1pc |
| DTXG0475 | Connecting Rod | 5 x1pc | DTXG0645 | Piston Pin | 10 x1pc |
| DTXG0493 | Cover Plate Recoil | 15 x1pc | DTXG0650 | Piston Pin Retainer | 11 x2pcs |
| DTXG0505 | Cover Plate Gasket | 26 x1pc | DTXG0755 | Recoil Starter Set | 18, 19, 20, 21, 22, 23, 24 x1pc |
| DTXG0511 | Cover Plate Screws | 28 x4pcs | DTXG0758 | Slide Valve | 34 x1pc |
| DTXG0525 | Crankcase | 7 x1pc | DTXG0770 | Start Shaft | 14 x1pc |
| DTXG0531 | Crankshaft for Recoil | 6 x1pc | DTXG0775 | Start Shaft Pin | 45 x1pc |
| DTXG0552 | Cylinder/Piston Assembly | 3, 4 x1pc | DTXG0780 | Start Shaft Spring | 44 x1pc |
| DTXG0557 | Fuel Inlet Nozzle | 33 x1pc | DTXG0805 | Throttle Arm | 36 x1pc |
| DTXG0565 | Drive Washer | 12 x1pc | DTXG0815 | Throttle Stop Screw | 38, 39, 40 x1pc |
| DTXG0566 | Drive Washer Collet | 13 x1pc | | | |
| DTXG0570 | Head Button | 2 x1pc | | | |
| DTXG0585 | Heatsink Head Black | 1 x1pc | | | |
| DTXG0595 | Heatsink Head Gasket | 25 x1pc | | | |

Optional

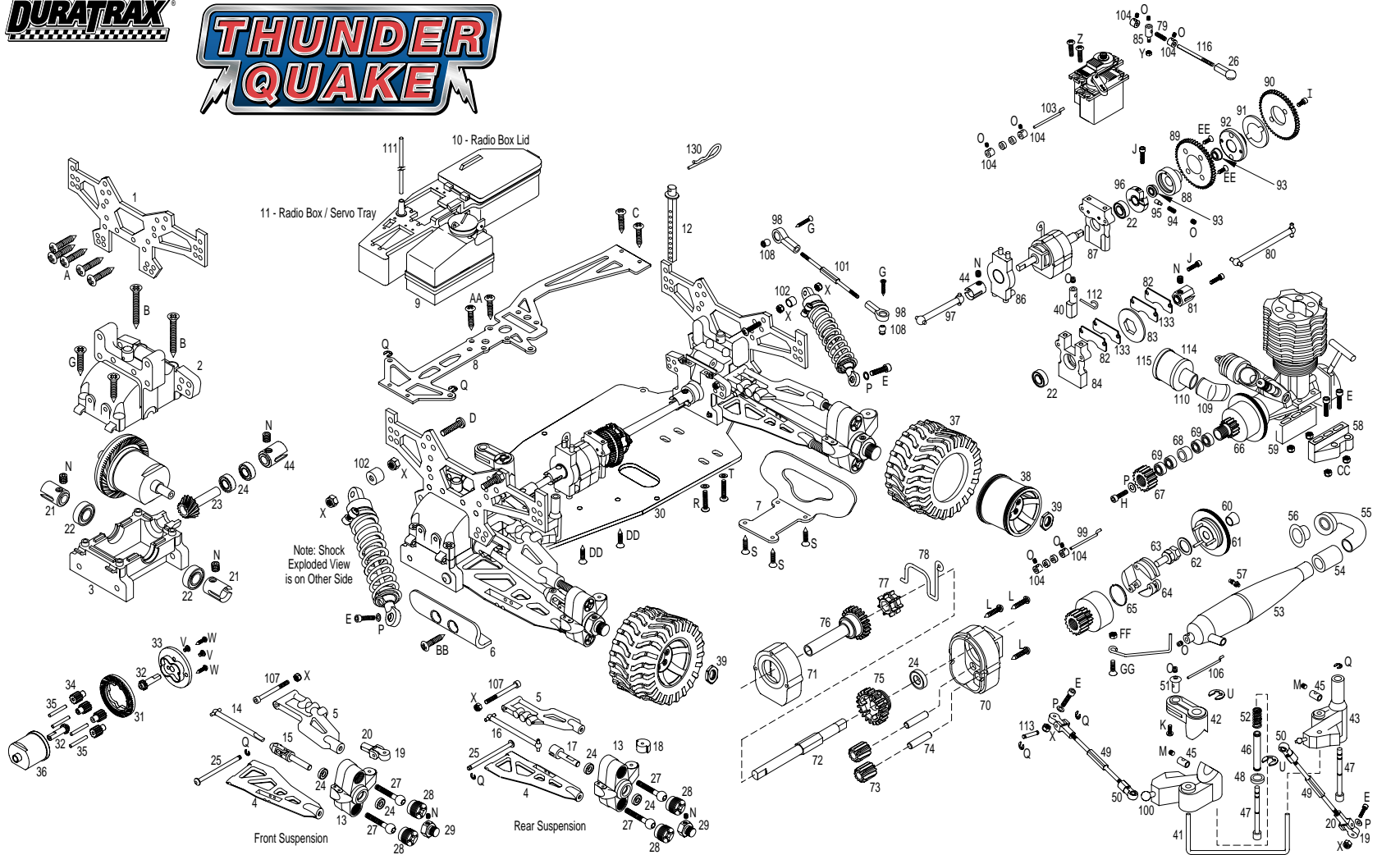
DTXG0495.....Cover Plate Standard.....Not Shown

SHOCK ASSEMBLY





THUNDER QUAKE



Note: Shock Exploded View is on Other Side

| | | | | | | |
|--------------------------------|--------------------------------|-------------------------------|-------------------------------------|-------------------------------|---------------------------------|-----------------------------|
| A M4 x 12 S/T Screw | F M4 x 45Cap Screw | K M3 x 6 Machine Screw | P M3 Flat Washer | U M5 E-Clip | Z M3 x 10 S/T Screw | EE M3 x 6 F/H Screw |
| B M4 x 33 F/H S/T Screw | G M4 x 22 F/H S/T Screw | L M2.6 x 18 S/T Screw | Q M3 E-clip | V M3 x 4 Machine Screw | AA M4 x 15 S/T Screw | FF M4 Nut |
| C M3 x 12 S/T Screw | H M3 x 5 Cap Screw | M M4 x 5 Set Screw | R M5 x 12 Pan Head Cap Screw | W M3 x 15 S/T Screw | BB M4 x 16 S/T Screw | GG M4 x 10 F/H Screw |
| D M4 x 22 Machine Screw | I M3 x 8 Cap Screw | N M5 x 5 Set Screw | S M4 x 18 F/H S/T Screw | X M4 Nylon Insert Nut | CC M3 Nylon Insert Nut | |
| E M3 x 20 Cap Screw | J M3 x 12 Cap Screw | O M3 x 3 Set Screw | | | DD M4 x 16 F/H S/T Screw | |